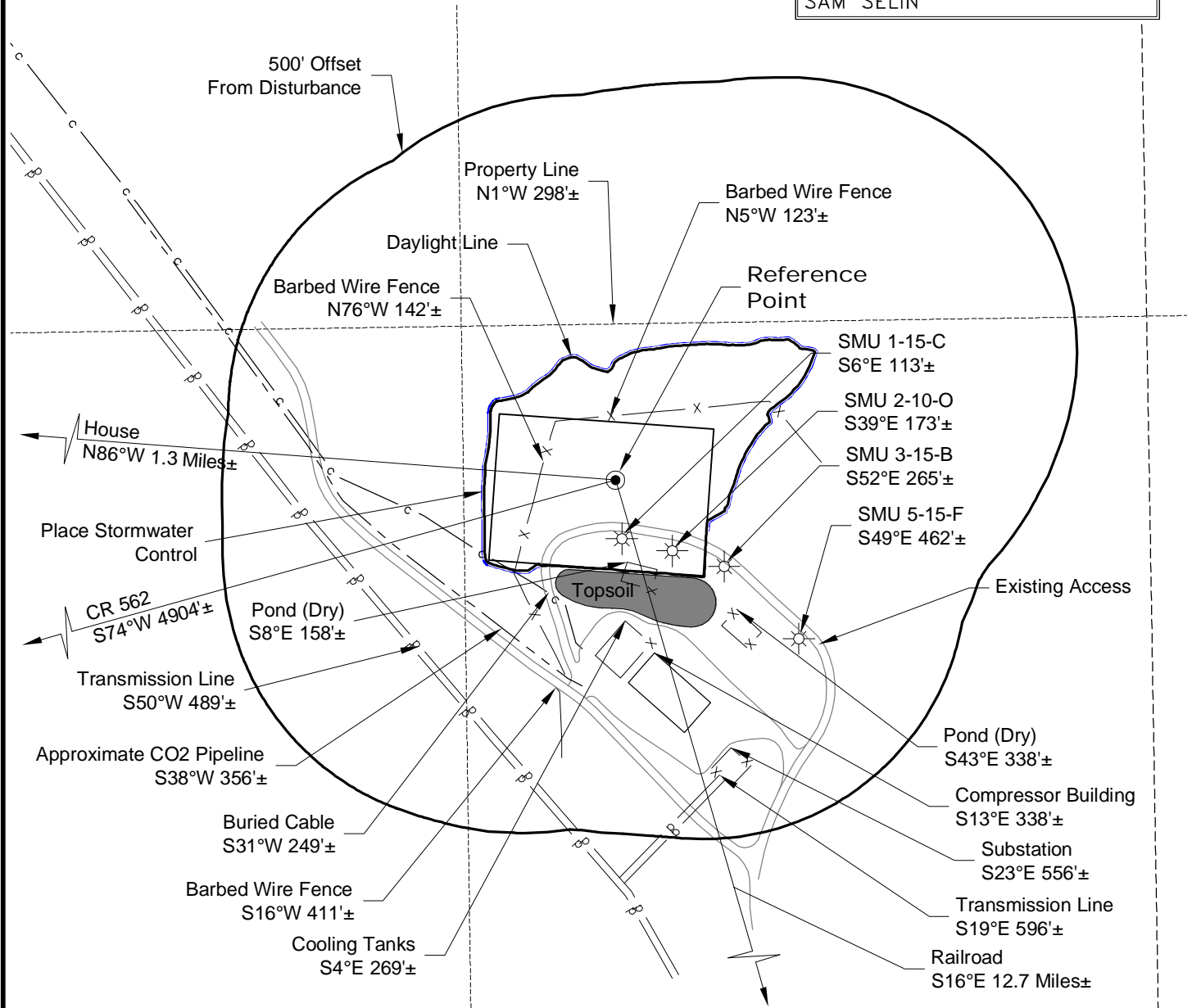


LOCATION DRAWING

PLANT COMMUNITY:
EVERGREEN
ASPEN
SCRUB OAK
SAGE BRUSH

REFERENCE POINT

LATITUDE: 37.70308
LONGITUDE: -105.21069
FOOTAGE: 1690 FNL 1598 FWL
GROUND ELEVATION: 8486.4
PDOP: 2.3 DATE: 12/5/2013
INSTRUMENT OPERATOR: SAM SELIN



DISTURBANCE ACREAGE:
4.4± DRILLING OPERATIONS

2/13/14



North

0 300 600

Graphic Scale in Feet
1" = 300'



LAND SURVEYING AND MAPPING
LAFAYETTE - WINTER PARK
Ph 303 666 0379 Fx 303 665 6320

OXY PERMIAN
SMU 7-15-I PAD

SE1/4 NW1/4 SECTION 15 T27S R70W
6th PM HUERFANO COUNTY COLORADO