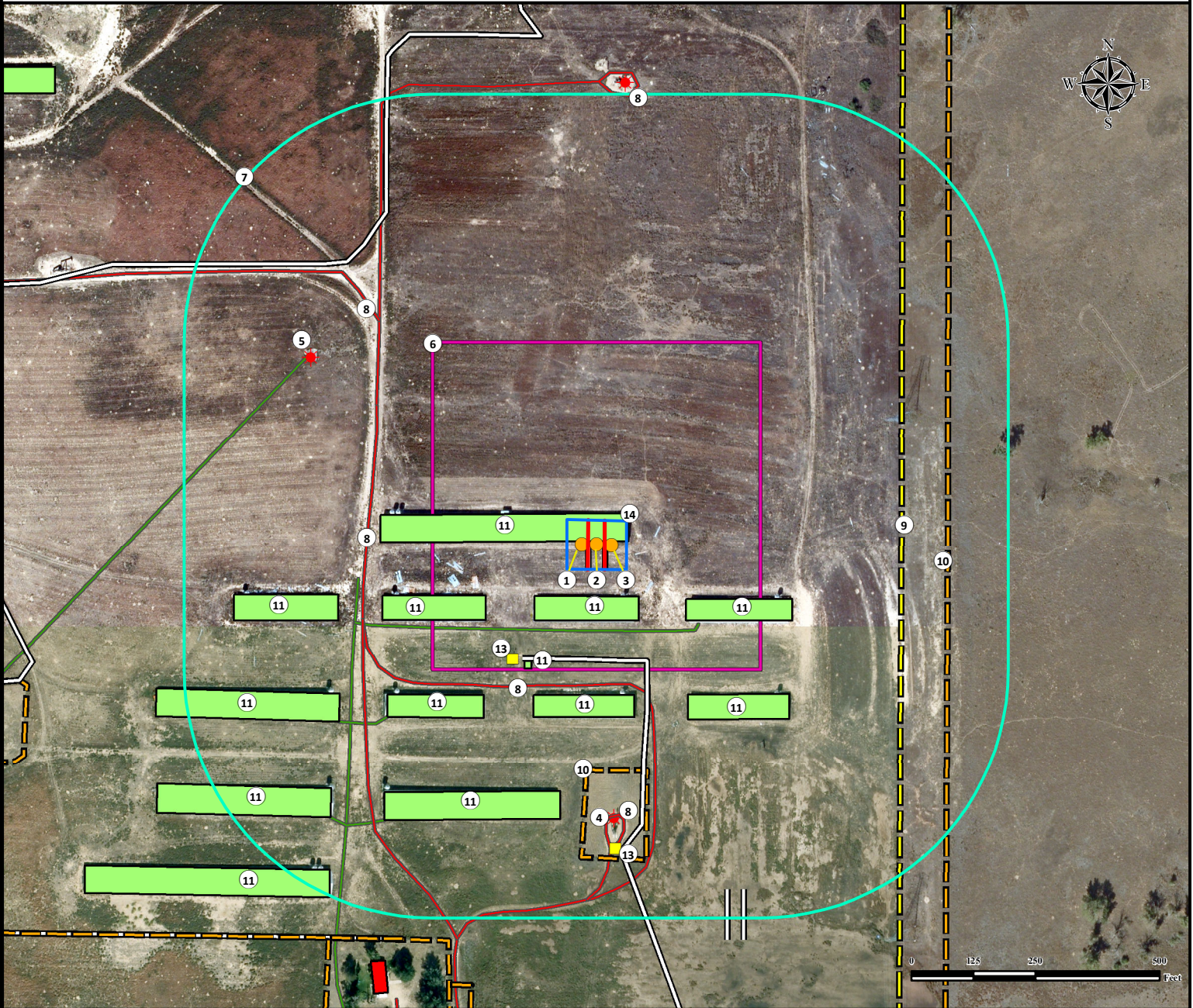


# Location Drawing

## SMALL EYED 14N-35HZ

### Horizontal Multi Well Pad

SE¼ SW¼ SECTION 23, TOWNSHIP 2 NORTH, RANGE 67 WEST OF THE 6TH PRINCIPAL MERIDIAN



- |   |   |  |
|---|---|--|
| 1. Proposed Well SMALL EYED 35C-35HZ.             | 6. Operational Disturbance Area.  | 11. Buildings are ±8' N, ±104' S, ±210' SE, ±246' SW, ±270' SW, ±304' S, ±353' SE, ±380' SW, ±502' SW, ±530' SW, ±599' SW, ±726' SW, and ±847' SW. |
| 2. Proposed Well SMALL EYED 14N-35HZ.             | 7. 500' Radius.   | 13. Electrical Boxes are ±286' SW and ±613' S.   |
| 3. Proposed Well SMALL EYED 14C-35HZ.             | 8. Private Roads are ±283' S, ±462' W, ±495' SW, ±631' NW, and ±907' N. | 14. Pump Jack Operations Area.   |
| 4. Existing Well SIDNEY STREAR UNIT 2 is ±552' S. | 9. Powerline is ±612' E.  |  |
| 5. Existing Well STREAR SIDNEY GU 1 is ±689' NW.  | 10. Fences are ±454' SW and ±706' E.                                    |  |

Legend		
<ul style="list-style-type: none"> <li><span style="color: orange;">●</span> Proposed Well</li> <li><span style="color: red;">★</span> Existing Well</li> <li><span style="color: yellow;">■</span> Electrical Box</li> </ul>	<ul style="list-style-type: none"> <li><span style="border: 1px solid purple; display: inline-block; width: 15px; height: 10px;"></span> Disturbance Area</li> <li><span style="border: 1px solid cyan; display: inline-block; width: 15px; height: 10px;"></span> 500' Radius</li> <li><span style="background-color: red; display: inline-block; width: 15px; height: 10px;"></span> Building Unit</li> <li><span style="background-color: lightgreen; display: inline-block; width: 15px; height: 10px;"></span> Building</li> <li><span style="border: 1px solid blue; display: inline-block; width: 15px; height: 10px;"></span> Pump Jack Operations Area</li> </ul>	<ul style="list-style-type: none"> <li><span style="border-bottom: 1px solid yellow; width: 20px; display: inline-block;"></span> Powerline</li> <li><span style="border-bottom: 1px dashed yellow; width: 20px; display: inline-block;"></span> Fence</li> <li><span style="border-bottom: 1px solid red; width: 20px; display: inline-block;"></span> Private Road</li> <li><span style="border-bottom: 1px solid green; width: 20px; display: inline-block;"></span> Pipeline</li> <li><span style="border-bottom: 1px solid black; width: 20px; display: inline-block;"></span> Underground Electric Line</li> </ul>

**Reference Location**

\*\* All measurements are made from Reference Well SMALL EYED 14N-35HZ \*\*

Lat: 40.119185° Long: -104.860585° (NAD83)  
Elevation: 4963 Feet

Surface Use: Rangeland

Nearest Building Unit: ±940' SW

**PFS** Petroleum Field Services  
*Use our resources to find yours!*  
[www.petro-fs.com](http://www.petro-fs.com)  
 (303) 928-7128

Field Date: 08/13/2013  
 Drafting Date: 03/12/2014  
 Drafter: SMG  
 Revision: 2

Data Sources:  
 - Aerial courtesy of Anadarko Petroleum Corporation (2010)

Prepared for: **Anadarko** Petroleum Corporation  
**KERR-MCGEE OIL & GAS ONSHORE LP**