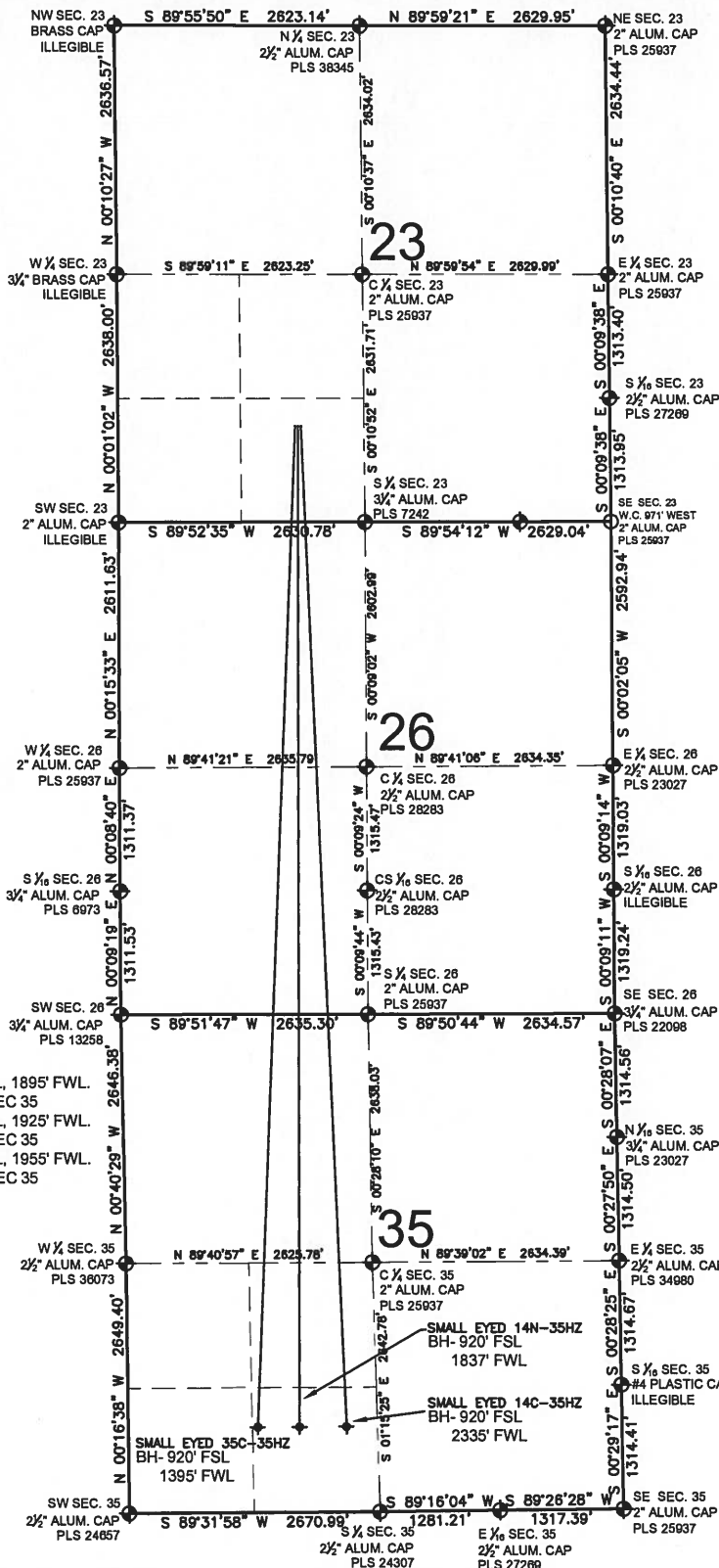


# SMALL EYED 14N-35HZ MULTI-WELL PLAN

SECTION 23, TOWNSHIP 2 NORTH, RANGE 67 WEST, 6TH P.M.



**NOTES:**  
 SMALL EYED 35C-35HZ TO BE AT 1020' FSL, 1895' FWL.  
 BOTTOM HOLE AT 920' FSL & 1395' FWL, SEC 35  
 SMALL EYED 14N-35HZ TO BE AT 1020' FSL, 1925' FWL.  
 BOTTOM HOLE AT 920' FSL & 1837' FWL, SEC 35  
 SMALL EYED 14C-35HZ TO BE AT 1020' FSL, 1955' FWL.  
 BOTTOM HOLE AT 920' FSL & 2335' FWL, SEC 35

**LEGEND**

- ⊕ = EXISTING MONUMENT
- = PROPOSED WELL
- ◆ = BOTTOM HOLE
- ◇ = EXISTING WELL
- BH = BOTTOM HOLE

PREPARED BY:



KERR-MCGEE OIL & GAS ONSHORE LP

FIELD DATE: 08-13-13	SURFACE LOCATION: SE 1/4 SW 1/4, SEC. 23, T2N, R67W, 6TH P.M.
DRAWING DATE: 01-24-14	WELD COUNTY, COLORADO