

**ANADARKO PETROLEUM CORP - EBUS
DO NOT MAIL - PO BOX 4995
THE WOODLANDS, Texas**

MCKINSTRY 28N-21HZ

Majors 29

Post Job Summary

Cement Surface Casing

Date Prepared: 1/24/2014
Version: 1

Service Supervisor: SMITH, AARON

Submitted by: TRIER, DEREK

HALLIBURTON

Wellbore Geometry

Job Tubulars					MD		Shoe Joint Length ft
Type	Description	Size in	ID in	Wt lbm/ft	Top ft	Bottom ft	
Casing	9 5/8" Surface Casing	9.63	8.921	36.00	0.00	1,023.00	45.00
Open Hole Section	13 1/2" Open Hole Section		13.500		0.00	1,023.00	0.00

HALLIBURTON

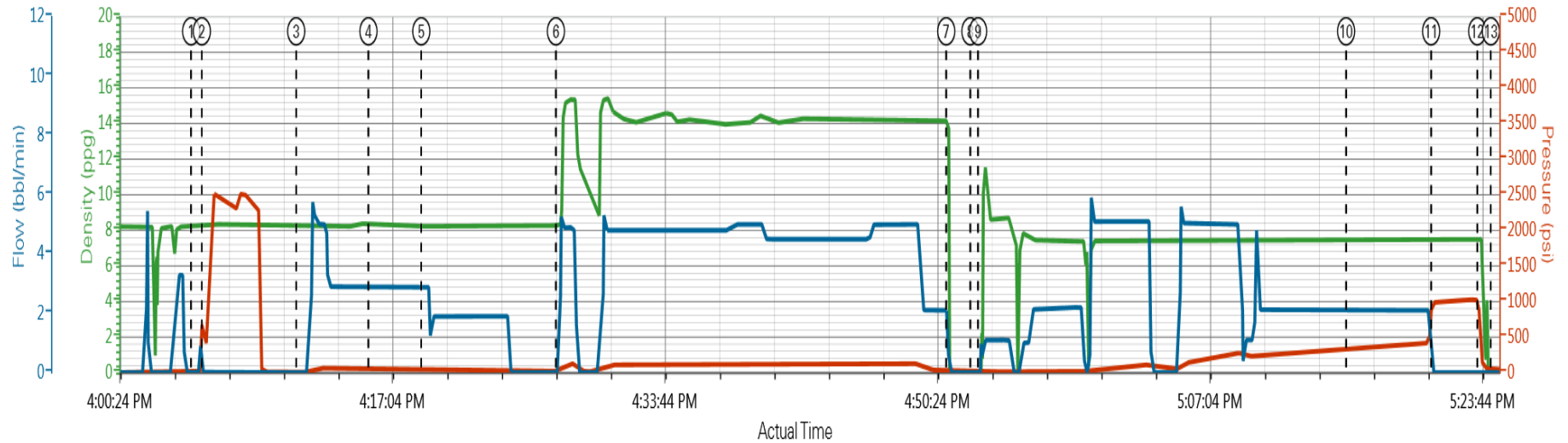
Pumping Schedule

Stage /Plug #	Fluid #	Fluid Type	Fluid Name	Surface Density lbm/gal	Avg Rate bbl/min	Surface Volume	Downhole Volume
1	1	Spacer	Fresh Water Spacer	8.33	5.00	10.0 bbl	10.0 bbl
1	2	Spacer	Mud Flush	8.40	5.00	12.0 bbl	12.0 bbl
1	1	Spacer	Fresh Water Spacer	8.33	5.00	10.0 bbl	10.0 bbl
1	3	Cement Slurry	SwiftCem B2	14.20	5.00	386.0 sacks	386.0 sacks

HALLIBURTON

Data Acquisition

ANADARKO PETROLEUM MCKINSTRY 28N-21HZ SURFACE



DH Density (ppg) PS Pump Press (psi) Comb Pump Rate (bbl/min)

- ① Start Job 8.22;1;0 ④ Pump Spacer 2 8.32;44;2.9 ⑦ Shutdown 0.3;29;0 ⑩ Other 7.49;357.48;2.1 ⑬ End Job -0.72;37;0
- ② Test Lines 8.32;458;0 ⑤ Pump Spacer 1 8.24;44;2.9 ⑧ Drop Top Plug -0.74;18;0 ⑪ Bump Plug 7.47;981;0
- ③ Pump Spacer 1 8.25;7;0 ⑥ Pump Cement 8.32;25;1 ⑨ Pump Displacement -0.25;21;1 ⑫ Check Floats 7.52;358;0

▼ HALLIBURTON | iCem® Service

Created: 2014-01-19 13:19:55, Version: 3.0.121

Edit

Customer: ANADARKO PETROLEUM CORP - EBUS

Job Date: 1/19/2014 1:26:56 PM

Well: MCKINSTRY 28N-21HZ

Representative: AARON SMITH

Sales Order #: 901052636

HALLIBURTON

Service Supervisor Reports

Job Log

Date/Time	Chart #	Activity Code	Pump Rate	Cum Vol	Pump	Pressure (psig)	Comments
01/19/2014 11:30		Casing on Bottom					
01/19/2014 11:30		Circulate Well					
01/19/2014 12:55		Arrive at Location from Service Center					WITH ALL EQUIPMENT AND MATERIALS,
01/19/2014 13:00		Assessment Of Location Safety Meeting					
01/19/2014 13:06		Pre-Rig Up Safety Meeting					RIG-UP JSA
01/19/2014 13:10		Rig-Up Equipment					
01/19/2014 13:30		Rig-Up Completed					
01/19/2014 15:30		Pre-Job Safety Meeting					WITH CUSTOMER REP AND RIG CREW
01/19/2014 16:04		Start Job					
01/19/2014 16:05		Test Lines				2500.0	FRESH WATER WITH NO ADDITIVES
01/19/2014 16:11		Pump Spacer 1	5	10		150.0	FRESH WATER WITH NO ADDITIVES
01/19/2014 16:15		Pump Spacer 2	5	12		105.0	FRESH WATER WITH MUD FLUSH
01/19/2014 16:18		Pump Spacer 1	5	10		105.0	FRESH WATER WITH NO ADDITIVES
01/19/2014 16:27		Pump Cement	5	106		105.0	386 SKS SWIFTCEM B1 @ 14.2 PPG 1.55 YIELD, 7.68 GAL/SK
01/19/2014 16:51		Shutdown					
01/19/2014 16:52		Drop Top Plug					PRE-LOADED HWE TOP PLUG IN PLUG CONTAINER VERIFIED BY CUSTOMER REP
01/19/2014 16:53		Pump Displacement	5	75		405.0	FRESH WATER WITH NO ADDITIVES
01/19/2014 17:07		Spacer Returns to Surface					@ 31 BBLS DISPLACEMENT, 32 BBLS TO THE PIT
01/19/2014 17:15		Cement Returns to Surface					@ 63 BBLS DISPLACEMENT, 12 BBLS TO THE PIT
01/19/2014 17:20		Bump Plug				1098.0	FINAL CIRCULATING PRESSURE 357, PSI TO LAND 298, PSI TO LIFT 466,
01/19/2014 17:23		Check Floats					FLOATS HELD, .5 BBLS BACK
01/19/2014 17:24		End Job					RIG DOWN JSA, JOURNEY MANAGMENT MEETING, THANKS AARON SMITH AND CREW

The Road to Excellence Starts with Safety

Sold To #: 300466		Ship To #: 3117229		Quote #:		Sales Order #: 901052636	
Customer: ANADARKO PETROLEUM CORP - EBUS				Customer Rep: Balkenbush, Bob			
Well Name: MCKINSTRY			Well #: 28N-21HZ		API/UWI #:		
Field: WATTENBERG		City (SAP): LONGMONT		County/Parish: Weld		State: Colorado	
Contractor: Majors			Rig/Platform Name/Num: Majors 29				
Job Purpose: Cement Surface Casing							
Well Type: Development Well				Job Type: Cement Surface Casing			
Sales Person: GREGORY, JON			Srvc Supervisor: SMITH, AARON			MBU ID Emp #: 518187	

Job Personnel

HES Emp Name	Exp Hrs	Emp #	HES Emp Name	Exp Hrs	Emp #	HES Emp Name	Exp Hrs	Emp #
SMITH, AARON David	5.0	518187	TOWNSON, JUSTIN T	5.0	555407			

Equipment

HES Unit #	Distance-1 way	HES Unit #	Distance-1 way	HES Unit #	Distance-1 way	HES Unit #	Distance-1 way
11341988C	25 mile	12010173	25 mile	5707C	25 mile		

Job

Job Times

Formation Name	Formation Depth (MD)	Top	Bottom	Called Out	Date	Time	Time Zone
					19 - Jan - 2014	10:00	MST
Form Type			BHST	On Location	19 - Jan - 2014	13:00	MST
Job depth MD	1023. ft		Job Depth TVD	1023. ft	Job Started	19 - Jan - 2014	16:04
Water Depth			Wk Ht Above Floor	5. ft	Job Completed	19 - Jan - 2014	17:24
Perforation Depth (MD)	<i>From</i>		<i>To</i>		Departed Loc	19 - Jan - 2014	18:00

Well Data

Description	New / Used	Max pressure psig	Size in	ID in	Weight lbm/ft	Thread	Grade	Top MD ft	Bottom MD ft	Top TVD ft	Bottom TVD ft
13 1/2" Open Hole Section				13.5				.	1023.		
9 5/8" Surface Casing	Unknown		9.625	8.921	36.		J-55	.	1023.		

Fluid Data

Stage/Plug #: 1

Fluid #	Stage Type	Fluid Name	Qty	Qty uom	Mixing Density lbm/gal	Yield ft ³ /sk	Mix Fluid Gal/sk	Rate bbl/min	Total Mix Fluid Gal/sk
1	Fresh Water Spacer		10.00	bbl	8.33			5.0	
2	Mud Flush		12.00	bbl	8.4			5.0	
	3.5 lbm/bbl	MUD FLUSH III, 40 LB SACK (101633304)							
	42 gal/bbl	MUD FLUSH III - SBM (528788)							
1	Fresh Water Spacer		10.00	bbl	8.33			5.0	
3	SwiftCem B2	SWIFTCEM (TM) SYSTEM (452990)	386.0	sacks	14.2	1.54	7.66	5.0	7.66
	7.66 Gal	FRESH WATER							

Calculated Values

Pressures

Volumes

Displacement	75.0	Shut In: Instant		Lost Returns		Cement Slurry		Pad	
Top Of Cement		5 Min		Cement Returns	12	Actual Displacement	75.0	Treatment	
Frac Gradient		15 Min		Spacers	32	Load and Breakdown		Total Job	
Rates									
Circulating		Mixing		Displacement	5.0	Avg. Job			
Cement Left In Pipe	Amount	45 ft	Reason	Shoe Joint					
Frac Ring # 1 @	ID	Frac ring # 2 @	ID	Frac Ring # 3 @	ID	Frac Ring # 4 @	ID		
The Information Stated Herein Is Correct				Customer Representative Signature					

