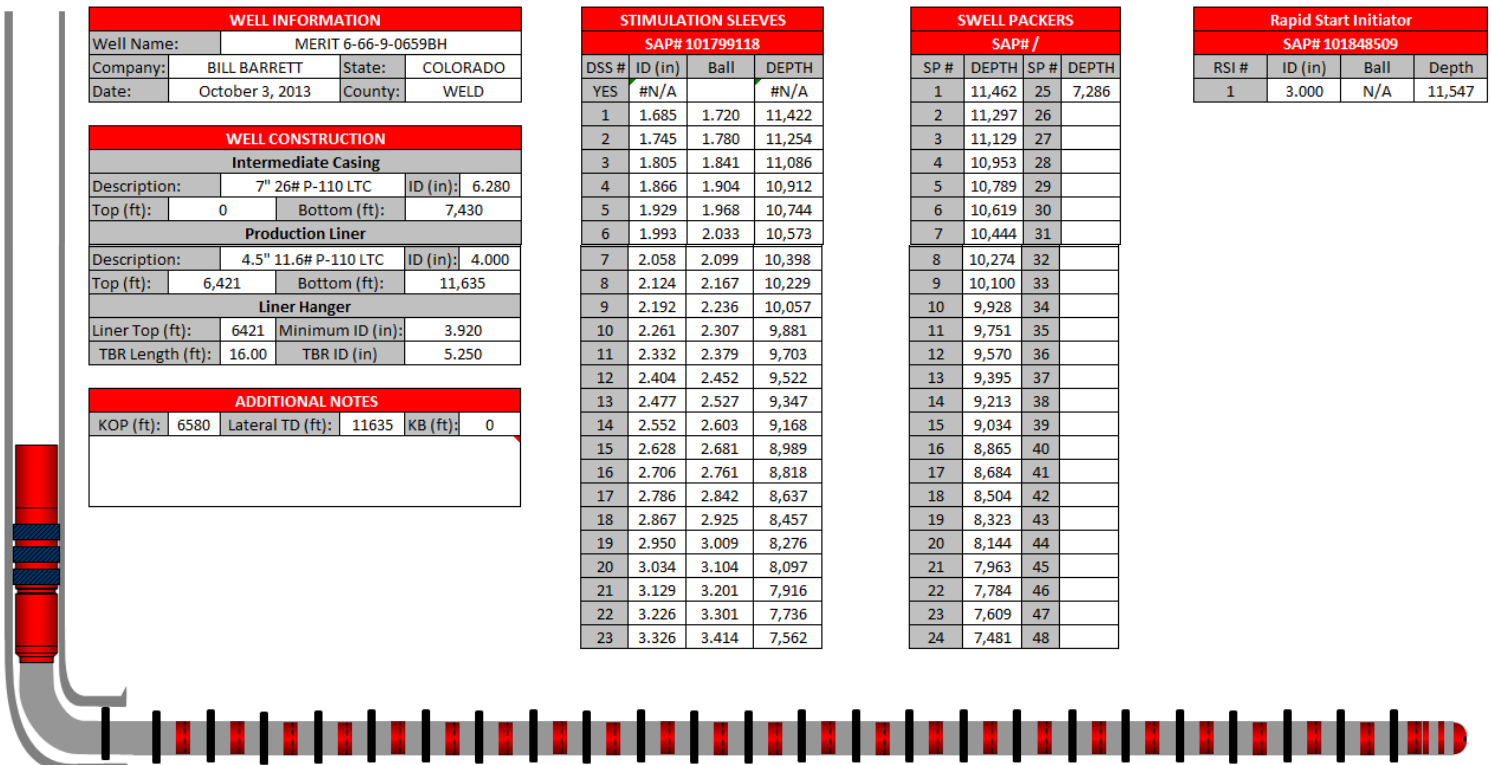


Well Schematic

VersaFlex Expandable Liner Hanger Installation



Note: Drawing is not to scale. Packer and sleeve depths are listed above as top of tools.

	Baffle Seat ID (in)	Ball OD (in)	Rate (BPM)	Depth MD (ft)	Volume From Surface to Sleeve (BBL)
Stage 1	1.685	1.720	58	11,422	177.04
Stage 2	1.745	1.780	62	11,254	174.44
Stage 3	1.805	1.841	66	11,086	171.83
Stage 4	1.866	1.904	71	10,912	169.14
Stage 5	1.929	1.968	76	10,744	166.53
Stage 6	1.993	2.033	81	10,573	163.88
Stage 7	2.058	2.099	86	10,398	161.17
Stage 8	2.124	2.167	92	10,229	158.55
Stage 9	2.192	2.236	98	10,057	155.88
Stage 10	2.261	2.307	104	9,881	153.16
Stage 11	2.332	2.379	111	9,703	150.40
Stage 12	2.404	2.452	118	9,522	147.59
Stage 13	2.477	2.527	125	9,347	144.88
Stage 14	2.552	2.603	133	9,168	142.10
Stage 15	2.628	2.681	141	8,989	139.33
Stage 16	2.706	2.761	149	8,818	136.68
Stage 17	2.786	2.842	158	8,637	133.87
Stage 18	2.867	2.925	168	8,457	131.08
Stage 19	2.950	3.009	178	8,276	128.28
Stage 20	3.034	3.104	188	8,097	125.50
Stage 21	3.129	3.201	200	7,916	122.70
Stage 22	3.226	3.301	212	7,736	119.91
Stage 23	3.326	3.414	226	7,562	117.21

*Gradually Decrease Rate to < 10 BPM 40-60 BBL Before Calculated Volume to Seat

**Calculated w/ 4.5", 11.6 # production liner @TOL 6,421' and a 4.5" tie back string that will be run at a later date.

Note: Well conditions may cause actual volume to seat seen in field to deviate from theoretical calculated volumes