

ANADARKO PETROLEUM CORP - EBUS  
DO NOT MAIL - PO BOX 4995  
THE WOODLANDS, Texas

Boyd 27N-5HZ

**MAJORS 42**

## **Post Job Summary**

# **Cement Surface Casing**

Date Prepared: 10/12/13  
Version: 1

Service Supervisor: SMITH, AARON

Submitted by: LANSDALE, JUSTIN

# HALLIBURTON

## Wellbore Geometry

---

Job Tubulars					MD		Shoe Joint Length ft
Type	Description	Size in	ID in	Wt lbm/ft	Top ft	Bottom ft	
Casing	9 5/8" Surface Casing	9.63	8.921	36.00	0.00	1,094.00	40.00
Open Hole Section	13 1/2" Open Hole Section		13.500		0.00	1,095.00	0.00

# HALLIBURTON

## Pumping Schedule

Stage /Plug #	Fluid #	Fluid Type	Fluid Name	Surface Density lbm/gal	Avg Rate bbl/min	Surface Volume	Downhole Volume
1	1	Spacer	Fresh Water Spacer	8.33	3.0	10.0 bbl	10.0 bbl
1	2	Spacer	Mud Flush	8.40	3.0	12.0 bbl	12.0 bbl
1	3	Cement Slurry	SwiftCem B2	14.20	5.0	394.0 sacks	394.0 sacks

## Fluids Pumped

**Stage/Plug # 1 Fluid 1:** Fresh Water Spacer  
DUMMY MUD / FLUSH / SPACER SBC MATERIAL

Fluid Density: 8.33 lbm/gal  
Fluid Volume: 10.00 bbl

**Stage/Plug # 1 Fluid 2:** Mud Flush  
DUMMY MUD / FLUSH / SPACER SBC MATERIAL

3.33 lbm/bbl Mud Flush III  
42 gal/bbl Mud Flush III

Fluid Density: 8.40 lbm/gal  
Fluid Volume: 12.00 bbl

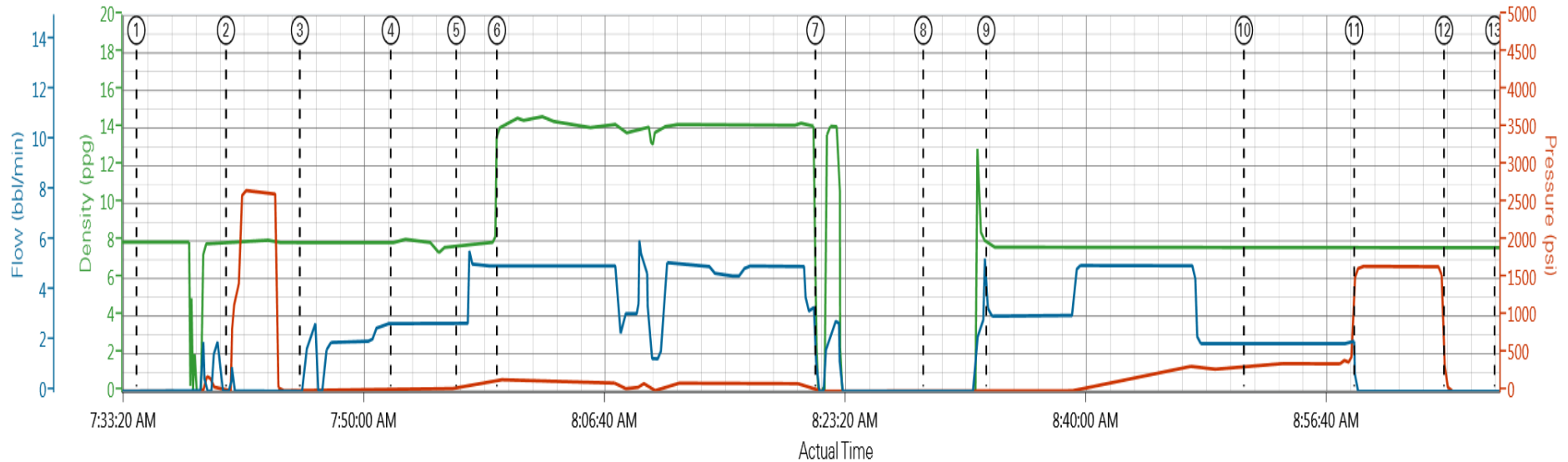
**Stage/Plug # 1 Fluid 3:** SwiftCem B2  
SWIFTCEM (TM) SYSTEM

Fluid Weight: 14.20 lbm/gal  
Slurry Yield: 1.54 ft<sup>3</sup>/sack  
Total Mixing Fluid: 7.63 Gal  
Surface Volume: 394.0 sacks  
Sacks: 394.0 sacks

# HALLIBURTON

## Data Acquisition

Anadarko Petroleum Boyd 27N-5HZ Surface



DH Density (ppg) 7.7 PS Pump Press (psi) 0 Comb Pump Rate (bbl/min) 2

- ① Start Job 7.88;1;0    ④ Pump Spacer 2.77;44;2.7    ⑦ Shutdown -0.27;12;0    ⑩ Cement Returns to Surface 7.65;307;1.9    ⑬ End Job 7.61;-8;0
- ② Test Lines 7.89;7;0    ⑤ Pump Spacer 17.77;44;2.7    ⑧ Drop Top Plug -0.57;-2;0    ⑪ Bump Plug 7.69;1622;0
- ③ Pump Spacer 17.9;3;0    ⑥ Pump Cement 14.05;154;5    ⑨ Pump Displacement 7.8;16;3    ⑫ Check Floats 7.62;66;0

▼ HALLIBURTON | iCem® Service

Created: 2013-10-07 05:13:48, Version: 2.0.606

Edit

Customer: ANADARKO PETROLEUM CORP - EBUS

Job Date: 10/7/2013 7:03:47 AM

Well: Boyd 27N-5HZ

Representative: Aaron Smith

Sales Order #: 900802757

Thanks: Aaron Smith and Crew

# HALLIBURTON

## Service Supervisor Reports

### Job Log

Date/Time	Chart #	Activity Code	Pump Rate	Cum Vol	Pump	Pressure (psig)	Comments
10/07/2013 06:00		Arrive at Location from Service Center					WITH ALL EQUIPMENT AND MATERIALS,
10/07/2013 06:00		Casing on Bottom					
10/07/2013 06:00		Circulate Well					
10/07/2013 06:05		Assessment Of Location Safety Meeting					
10/07/2013 06:15		Pre-Rig Up Safety Meeting					RIG-UP JSA
10/07/2013 06:20		Rig-Up Equipment					
10/07/2013 06:45		Rig-Up Completed					
10/07/2013 07:00		Pre-Job Safety Meeting					WITH CUSTOMER REP AND RIG CREW
10/07/2013 07:34		Start Job					
10/07/2013 07:40		Test Lines				2500.0	FRESH WATER WITH NO ADDITIVES
10/07/2013 07:45		Pump Spacer 1	3	10		80.0	FRESH WATER WITH NO ADDITIVES
10/07/2013 07:52		Pump Spacer 2	3	12		80.0	FRESH WATER WITH MUD FLUSH
10/07/2013 07:56		Pump Spacer 1	3	10		80.0	FRESH WATER WITH NO ADDITIVES
10/07/2013 07:59		Pump Cement	5	109		160.0	394 SKS SWIFTCM B1 @ 14.2 PPG 1.54 YIELD, 7.68 GAL/SK
10/07/2013 08:21		Shutdown					
10/07/2013 08:28		Drop Top Plug					PRE-LOADED HWE TOP PLUG IN PLUG CONTAINER VERIFIED BY CUSTOMER REP
10/07/2013 08:33		Pump Displacement	5	82		420.0	FRESH WATER WITH NO ADDITIVES
10/07/2013 08:51		Cement Returns to Surface					@68 BBLs DISPLACEMENT, 14 BBLs TO THE PIT
10/07/2013 08:58		Bump Plug	2			1660.0	FINAL CIRCULATING PRESSURE 416, PSI TO LAND321, PSI TO LIFT477,
10/07/2013 09:04		Check Floats					FLOATS HELD, .5 BBLs BACK
10/07/2013 09:08		End Job					RIG DOWN JSA, JOURNEY MANAGMENT MEETING, THANKS AARON SMITH AND CREW

*The Road to Excellence Starts with Safety*

<b>Sold To #:</b> 300466	<b>Ship To #:</b> 3109694	<b>Quote #:</b>	<b>Sales Order #:</b> 900802757
<b>Customer:</b> ANADARKO PETROLEUM CORP - EBUS		<b>Customer Rep:</b> Porter, Bob	
<b>Well Name:</b> Boyd		<b>Well #:</b> 27N-5HZ	<b>API/UWI #:</b>
<b>Field:</b> WATTENBERG	<b>City (SAP):</b> HUDSON	<b>County/Parish:</b> Weld	<b>State:</b> Colorado
<b>Contractor:</b> MAJORS		<b>Rig/Platform Name/Num:</b> MAJORS 42	
<b>Job Purpose:</b> Cement Surface Casing			
<b>Well Type:</b> Development Well		<b>Job Type:</b> Cement Surface Casing	
<b>Sales Person:</b> FLING, MATTHEW		<b>Srvc Supervisor:</b> SMITH, AARON	<b>MBU ID Emp #:</b> 518187

### Job Personnel

HES Emp Name	Exp Hrs	Emp #	HES Emp Name	Exp Hrs	Emp #	HES Emp Name	Exp Hrs	Emp #
DODSON, RICHARD Bryan	4.0	518192	SMITH, AARON David	4.0	518187	TORREY, SPENCER Kenneth	4.0	549837

### Equipment

HES Unit #	Distance-1 way	HES Unit #	Distance-1 way	HES Unit #	Distance-1 way	HES Unit #	Distance-1 way
11398490	10 mile	11748359	10 mile	12010173	10 mile	NA	10 mile

### Job

### Job Times

Formation Name	Formation Depth (MD)	Top	Bottom	Form Type	Job depth MD	Water Depth	Perforation Depth (MD)	From	To	Called Out	Date	Time	Time Zone
				BHST	1095. ft	. ft					07 - Oct - 2013	03:00	MST
				32 degF	1095. ft	5. ft				On Location	07 - Oct - 2013	06:00	MST
										Job Started	07 - Oct - 2013	07:34	MST
										Job Completed	07 - Oct - 2013	09:08	MST
										Departed Loc	07 - Oct - 2013	10:00	MST

### Well Data

Description	New / Used	Max pressure psig	Size in	ID in	Weight lbm/ft	Thread	Grade	Top MD ft	Bottom MD ft	Top TVD ft	Bottom TVD ft
13 1/2" Open Hole Section				13.5				.	1095.	.	.
9 5/8" Surface Casing	Unknown		9.625	8.921	36.		J-55	.	1094.		

### Sales/Rental/3<sup>rd</sup> Party (HES)

Description	Qty	Qty uom	Depth	Supplier
CMT CASING EQUIPMENT BOM	1	JOB		
MILEAGE FOR CEMENTING CREW,ZI	30	MI		
ZI FUEL SURCHG-CARS/PICKUPS<1 1/2TON	30	MI		
KIT,HALL WELD-A	1	EA		
CNTRLZR, 9 5/8"x13 3/4',#500-0963-1375	7	EA		
BASKET - CEMENT - 9-5/8 CSG X 12-1/4	1	EA		
PLUG,CMTG, TOP,9 5/8,HWE,8.16 MIN/9.06 MA	1	EA		
Description	Qty	Qty uom	Depth	Supplier
COLLAR-STOP-9 5/8"-FRICTION-HINGED	2	EA		

### Fluid Data

**Stage/Plug #: 1**

Fluid #	Stage Type	Fluid Name	Qty	Qty uom	Mixing Density lbm/gal	Yield ft <sup>3</sup> /sk	Mix Fluid Gal/sk	Rate bbl/min	Total Mix Fluid Gal/sk
1	Fresh Water Spacer		10.00	bbl	8.33			3	
2	Mud Flush		12.00	bbl	8.4			3	
3.33 lbm/bbl		MUD FLUSH III, 40 LB SACK (101633304)							
42 gal/bbl		MUD FLUSH III - SBM (528788)							
3	SwiftCem B2	SWIFTCEM (TM) SYSTEM (452990)	394.0	sacks	14.2	1.54	7.63	5	7.63
7.63 Gal		FRESH WATER							
<b>Rates</b>									
Circulating		Mixing		Displacement		Avg. Job			
Cement Left In Pipe		Amount	40 ft	Reason	Shoe Joint				
Frac Ring # 1 @	ID	Frac ring # 2 @	ID	Frac Ring # 3 @	ID	Frac Ring # 4 @	ID		
The Information Stated Herein Is Correct				Customer Representative Signature					

