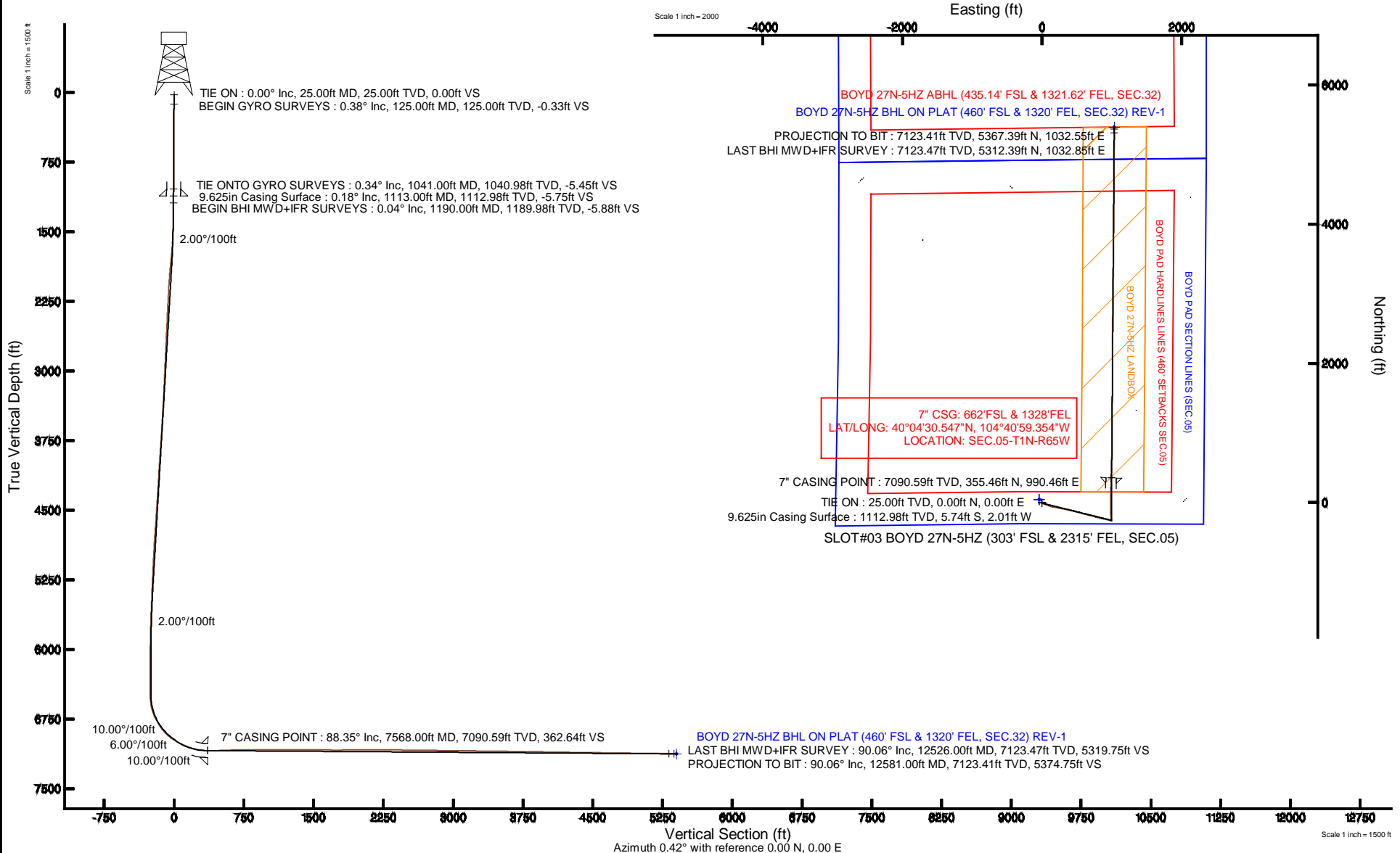


# KERR-MCGEE OIL & GAS ONSHORE LP

Location: COLORADO Slot: SLOT#03 BOYD 27N-5HZ (303' FSL & 2315' FEL, SEC.05)  
 Field: WELD COUNTY (KERR MCGEE) Well: BOYD 27N-5HZ  
 Facility: SEC.05-T1N-R65W Wellbore: BOYD 27N-5HZ PWB

Plot reference wellpath is BOYD 27N-5HZ (REV-B.0) PWP

True vertical depths are referenced to H&P 307 (RKB)	Grid System: NAD83 / Lambert Colorado SP, Northern Zone (501), US feet
Measured depths are referenced to H&P 307 (RKB)	North Reference: True north
H&P 307 (RKB) to Mean Sea Level: 4975 feet	Scale: True distance
Mean Sea Level to Mud line (At Slot: SLOT#03 BOYD 27N-5HZ (303' FSL & 2315' FEL, SEC.05)): 0 feet	Depths are in feet
Coordinates are in feet referenced to Slot	Created by: robiale01 on 16/Jan/2014



Scale 1 inch = 1500 ft

REFERENCE WELLPATH IDENTIFICATION			
Operator	KERR-MCGEE OIL & GAS ONSHORE LP	Slot	SLOT#03 BOYD 27N-5HZ (303' FSL & 2315' FEL, SEC.05)
Area	COLORADO	Well	BOYD 27N-5HZ
Field	WELD COUNTY (KERR MCGEE)	Wellbore	BOYD 27N-5HZ AWB
Facility	SEC.05-T1N-R65W		

REPORT SETUP INFORMATION			
Projection System	NAD83 / Lambert Colorado SP, Northern Zone (501), US feet	Software System	WellArchitect@ 4.0.0
North Reference	True	User	Robiale01
Scale	0.999962	Report Generated	16/Jan/2014 at 09:43
Convergence at slot	n/a	Database/Source file	WellArchitectDB/BOYD_27N-5HZ_AWB.xml

WELLPATH LOCATION						
	Local coordinates		Grid coordinates		Geographic coordinates	
	North[ft]	East[ft]	Easting[US ft]	Northing[US ft]	Latitude	Longitude
Slot Location	-2329.36	302.32	3227599.84	1270911.11	40°04'27.034"N	104°41'12.095"W
Facility Reference Pt			3227276.21	1273237.51	40°04'50.053"N	104°41'15.984"W
Field Reference Pt			3197771.84	1268891.29	40°04'09.600"N	104°47'36.000"W

WELLPATH DATUM			
Calculation method	Minimum curvature	H&P 307 (RKB) to Facility Vertical Datum	4975.00ft
Horizontal Reference Pt	Slot	H&P 307 (RKB) to Mean Sea Level	4975.00ft
Vertical Reference Pt	H&P 307 (RKB)	H&P 307 (RKB) to Mud Line at Slot (SLOT#03 BOYD 27N-5HZ (303' FSL & 2315' FEL, SEC.05))	4975.00ft
MD Reference Pt	H&P 307 (RKB)	Section Origin	N 0.00, E 0.00 ft
Field Vertical Reference	Mean Sea Level	Section Azimuth	0.42°

REFERENCE WELLPATH IDENTIFICATION				
Operator	KERR-MCGEE OIL & GAS ONSHORE LP		Slot	SLOT#03 BOYD 27N-5HZ (303' FSL & 2315' FEL, SEC.05)
Area	COLORADO		Well	BOYD 27N-5HZ
Field	WELD COUNTY (KERR MCGEE)		Wellbore	BOYD 27N-5HZ AWB
Facility	SEC.05-T1N-R65W			

WELLPATH DATA (133 stations) † = interpolated/extrapolated station										
MD [ft]	Inclination [°]	Azimuth [°]	TVD [ft]	Vert Sect [ft]	North [ft]	East [ft]	Latitude	Longitude	DLS [°/100ft]	Comments
0.00†	0.000	183.490	0.00	0.00	0.00	0.00	40°04'27.034"N	104°41'12.095"W	0.00	
25.00	0.000	183.490	25.00	0.00	0.00	0.00	40°04'27.034"N	104°41'12.095"W	0.00	TIE ON
125.00	0.380	183.490	125.00	-0.33	-0.33	-0.02	40°04'27.031"N	104°41'12.095"W	0.38	BEGIN GYRO SURVEYS
225.00	0.340	185.420	225.00	-0.96	-0.96	-0.07	40°04'27.025"N	104°41'12.096"W	0.04	
325.00	0.380	191.770	325.00	-1.58	-1.58	-0.16	40°04'27.018"N	104°41'12.097"W	0.06	
425.00	0.400	192.260	424.99	-2.25	-2.24	-0.31	40°04'27.012"N	104°41'12.099"W	0.02	
525.00	0.360	201.750	524.99	-2.88	-2.88	-0.50	40°04'27.006"N	104°41'12.101"W	0.07	
625.00	0.330	215.390	624.99	-3.41	-3.40	-0.78	40°04'27.000"N	104°41'12.105"W	0.09	
725.00	0.370	195.790	724.99	-3.96	-3.95	-1.03	40°04'26.995"N	104°41'12.108"W	0.13	
825.00	0.310	235.220	824.99	-4.42	-4.41	-1.34	40°04'26.990"N	104°41'12.112"W	0.24	
925.00	0.390	192.810	924.98	-4.91	-4.90	-1.64	40°04'26.986"N	104°41'12.116"W	0.26	
1025.00	0.210	218.600	1024.98	-5.39	-5.37	-1.83	40°04'26.981"N	104°41'12.119"W	0.22	
1041.00	0.340	207.290	1040.98	-5.45	-5.44	-1.87	40°04'26.980"N	104°41'12.119"W	0.88	TIE ONTO GYRO SURVEYS
1190.00	0.040	134.310	1189.98	-5.88	-5.87	-2.04	40°04'26.976"N	104°41'12.121"W	0.22	BEGIN BHI MWD+IFR SURVEYS
1284.00	2.030	118.900	1283.96	-6.70	-6.70	-0.56	40°04'26.968"N	104°41'12.102"W	2.12	
1379.00	4.060	106.730	1378.82	-8.45	-8.48	4.14	40°04'26.950"N	104°41'12.042"W	2.23	
1474.00	6.420	105.510	1473.42	-10.78	-10.87	12.48	40°04'26.927"N	104°41'11.934"W	2.49	
1569.00	8.780	107.330	1567.58	-14.27	-14.45	24.52	40°04'26.891"N	104°41'11.780"W	2.50	
1663.00	11.490	113.480	1660.11	-20.02	-20.32	39.96	40°04'26.833"N	104°41'11.581"W	3.10	
1754.00	11.940	114.140	1749.21	-27.36	-27.78	56.86	40°04'26.760"N	104°41'11.364"W	0.52	
1848.00	13.460	115.160	1840.91	-35.85	-36.40	75.64	40°04'26.674"N	104°41'11.122"W	1.63	
1941.00	13.970	108.660	1931.26	-43.90	-44.60	96.07	40°04'26.593"N	104°41'10.859"W	1.74	
2034.00	14.200	108.270	2021.47	-50.91	-51.77	117.54	40°04'26.522"N	104°41'10.583"W	0.27	
2126.00	14.500	103.970	2110.60	-57.07	-58.08	139.43	40°04'26.460"N	104°41'10.301"W	1.20	
2219.00	14.070	101.960	2200.72	-62.06	-63.24	161.79	40°04'26.409"N	104°41'10.014"W	0.71	
2312.00	14.040	101.170	2290.94	-66.43	-67.77	183.92	40°04'26.364"N	104°41'09.729"W	0.21	
2498.00	14.400	100.960	2471.24	-74.87	-76.53	228.76	40°04'26.278"N	104°41'09.152"W	0.20	
2685.00	14.890	100.580	2652.16	-83.37	-85.37	275.20	40°04'26.190"N	104°41'08.555"W	0.27	
2779.00	14.410	100.800	2743.11	-87.61	-89.78	298.56	40°04'26.147"N	104°41'08.254"W	0.51	
2965.00	13.730	100.450	2923.53	-95.62	-98.12	343.01	40°04'26.064"N	104°41'07.683"W	0.37	
3151.00	13.740	100.830	3104.21	-103.46	-106.27	386.41	40°04'25.984"N	104°41'07.124"W	0.05	
3338.00	13.490	100.990	3285.95	-111.48	-114.60	429.63	40°04'25.901"N	104°41'06.568"W	0.14	
3432.00	13.810	105.340	3377.30	-116.38	-119.66	451.21	40°04'25.851"N	104°41'06.291"W	1.14	
3618.00	13.400	105.030	3558.08	-127.53	-131.12	493.44	40°04'25.738"N	104°41'05.748"W	0.22	
3710.00	12.880	104.470	3647.67	-132.71	-136.45	513.66	40°04'25.686"N	104°41'05.487"W	0.58	
3802.00	13.240	109.560	3737.29	-138.66	-142.54	533.52	40°04'25.625"N	104°41'05.232"W	1.31	
3894.00	14.000	107.540	3826.71	-145.39	-149.42	554.06	40°04'25.557"N	104°41'04.968"W	0.97	
3986.00	14.600	103.990	3915.86	-151.39	-155.58	575.92	40°04'25.497"N	104°41'04.687"W	1.15	
4169.00	13.760	103.430	4093.28	-161.70	-166.21	619.47	40°04'25.391"N	104°41'04.126"W	0.47	
4261.00	14.850	105.020	4182.43	-167.14	-171.80	641.50	40°04'25.336"N	104°41'03.843"W	1.26	
4449.00	14.590	104.440	4364.26	-178.95	-183.95	687.70	40°04'25.216"N	104°41'03.249"W	0.16	
4639.00	14.110	104.710	4548.33	-190.47	-195.80	733.27	40°04'25.099"N	104°41'02.663"W	0.26	
4733.00	14.660	107.250	4639.38	-196.74	-202.24	755.72	40°04'25.035"N	104°41'02.374"W	0.89	
4922.00	14.270	104.030	4822.39	-209.15	-214.98	801.16	40°04'24.909"N	104°41'01.789"W	0.47	
5110.00	13.840	103.440	5004.76	-219.67	-225.82	845.51	40°04'24.802"N	104°41'01.219"W	0.24	

REFERENCE WELLPATH IDENTIFICATION			
Operator	KERR-MCGEE OIL & GAS ONSHORE LP	Slot	SLOT#03 BOYD 27N-5HZ (303' FSL & 2315' FEL, SEC.05)
Area	COLORADO	Well	BOYD 27N-5HZ
Field	WELD COUNTY (KERR MCGEE)	Wellbore	BOYD 27N-5HZ AWB
Facility	SEC.05-T1N-R65W		

WELLPATH DATA (133 stations) † = interpolated/extrapolated station										
MD [ft]	Inclination [°]	Azimuth [°]	TVD [ft]	Vert Sect [ft]	North [ft]	East [ft]	Latitude	Longitude	DLS [°/100ft]	Comments
5203.00	13.890	102.290	5095.05	-224.48	-230.78	867.23	40°04'24.753"N	104°41'00.939"W	0.30	
5298.00	13.100	100.170	5187.43	-228.65	-235.11	888.97	40°04'24.710"N	104°41'00.660"W	0.98	
5393.00	13.040	101.100	5279.97	-232.46	-239.07	910.08	40°04'24.671"N	104°41'00.388"W	0.23	
5487.00	11.810	101.000	5371.77	-236.19	-242.95	929.93	40°04'24.633"N	104°41'00.133"W	1.31	
5581.00	9.910	102.450	5464.08	-239.65	-246.53	947.28	40°04'24.598"N	104°40'59.910"W	2.04	
5676.00	8.590	108.400	5557.84	-243.54	-250.53	961.99	40°04'24.558"N	104°40'59.720"W	1.71	
5771.00	6.390	109.490	5652.03	-247.46	-254.54	973.71	40°04'24.518"N	104°40'59.570"W	2.32	
5865.00	4.310	109.310	5745.61	-250.31	-257.45	981.98	40°04'24.490"N	104°40'59.463"W	2.21	
5960.00	3.370	111.360	5840.40	-252.47	-259.65	987.94	40°04'24.468"N	104°40'59.387"W	1.00	
6054.00	2.260	133.900	5934.29	-254.73	-261.94	991.85	40°04'24.445"N	104°40'59.336"W	1.65	
6149.00	0.710	120.470	6029.25	-256.31	-263.54	993.71	40°04'24.429"N	104°40'59.312"W	1.66	
6432.00	0.240	87.830	6123.24	-257.17	-264.40	995.81	40°04'24.421"N	104°40'59.285"W	0.19	
6526.00	0.180	30.870	6406.24	-257.03	-264.27	996.09	40°04'24.422"N	104°40'59.282"W	0.22	
6573.00	0.520	358.920	6453.24	-256.75	-263.99	996.12	40°04'24.425"N	104°40'59.281"W	0.81	
6621.00	1.080	345.240	6501.24	-256.10	-263.34	996.00	40°04'24.431"N	104°40'59.283"W	1.22	
6668.00	4.840	346.650	6548.16	-253.74	-260.98	995.43	40°04'24.455"N	104°40'59.290"W	8.00	
6716.00	9.750	351.910	6595.76	-247.75	-254.98	994.39	40°04'24.514"N	104°40'59.304"W	10.31	
6763.00	14.880	353.760	6641.66	-237.82	-245.03	993.17	40°04'24.612"N	104°40'59.319"W	10.95	
6810.00	20.370	352.900	6686.44	-223.70	-230.91	991.51	40°04'24.752"N	104°40'59.341"W	11.69	
6857.00	24.200	352.930	6729.92	-206.04	-213.22	989.31	40°04'24.927"N	104°40'59.369"W	8.15	
6904.00	28.570	354.640	6772.02	-185.29	-192.46	987.07	40°04'25.132"N	104°40'59.398"W	9.44	
6951.00	32.040	356.480	6812.59	-161.67	-168.82	985.26	40°04'25.365"N	104°40'59.421"W	7.64	
6999.00	36.320	357.120	6852.29	-134.76	-141.91	983.76	40°04'25.631"N	104°40'59.440"W	8.95	
7046.00	41.690	358.590	6888.80	-105.22	-112.36	982.67	40°04'25.923"N	104°40'59.454"W	11.59	
7093.00	47.530	359.870	6922.25	-72.23	-79.37	982.25	40°04'26.249"N	104°40'59.460"W	12.57	
7140.00	54.340	1.380	6951.85	-35.77	-42.90	982.67	40°04'26.610"N	104°40'59.454"W	14.70	
7188.00	59.270	1.930	6978.12	4.38	-2.76	983.84	40°04'27.006"N	104°40'59.439"W	10.32	
7235.00	61.870	1.110	7001.21	45.30	38.15	984.92	40°04'27.411"N	104°40'59.425"W	5.74	
7282.00	64.410	0.490	7022.45	87.23	80.07	985.50	40°04'27.825"N	104°40'59.418"W	5.53	
7329.00	67.660	359.450	7041.53	130.17	123.02	985.47	40°04'28.249"N	104°40'59.418"W	7.20	
7376.00	72.230	0.120	7057.65	174.30	167.15	985.31	40°04'28.686"N	104°40'59.420"W	9.82	
7423.00	75.160	1.020	7070.84	219.41	212.26	985.76	40°04'29.131"N	104°40'59.414"W	6.50	
7470.00	79.510	1.710	7081.14	265.25	258.09	986.86	40°04'29.584"N	104°40'59.400"W	9.37	
7529.00	85.900	2.300	7088.63	323.72	316.54	988.91	40°04'30.162"N	104°40'59.374"W	10.88	
7568.00†	88.349	2.274	7090.59	362.64	355.46	990.46	40°04'30.547"N	104°40'59.354"W	6.28	7" CASING POINT
7604.00	90.610	2.250	7090.92	398.62	391.43	991.88	40°04'30.902"N	104°40'59.336"W	6.28	
7696.00	92.140	2.320	7088.71	490.54	483.33	995.55	40°04'31.810"N	104°40'59.288"W	1.66	
7788.00	92.470	1.090	7085.01	582.44	575.21	998.28	40°04'32.718"N	104°40'59.253"W	1.38	
7880.00	92.690	0.460	7080.87	674.35	667.11	999.53	40°04'33.626"N	104°40'59.237"W	0.72	
7975.00	89.600	359.830	7078.97	769.31	762.08	999.77	40°04'34.565"N	104°40'59.234"W	3.32	
8069.00	89.410	0.370	7079.78	863.31	856.07	999.93	40°04'35.494"N	104°40'59.232"W	0.61	
8164.00	90.090	0.120	7080.19	958.31	951.07	1000.34	40°04'36.432"N	104°40'59.227"W	0.76	
8258.00	89.290	0.550	7080.70	1052.30	1045.07	1000.89	40°04'37.361"N	104°40'59.220"W	0.97	
8353.00	90.120	0.860	7081.19	1147.30	1140.06	1002.05	40°04'38.300"N	104°40'59.204"W	0.93	
8447.00	89.160	0.920	7081.78	1241.30	1234.04	1003.51	40°04'39.229"N	104°40'59.186"W	1.02	

REFERENCE WELLPATH IDENTIFICATION				
Operator	KERR-MCGEE OIL & GAS ONSHORE LP		Slot	SLOT#03 BOYD 27N-5HZ (303' FSL & 2315' FEL, SEC.05)
Area	COLORADO		Well	BOYD 27N-5HZ
Field	WELD COUNTY (KERR MCGEE)		Wellbore	BOYD 27N-5HZ AWB
Facility	SEC.05-T1N-R65W			

### WELLPATH DATA (133 stations)

MD [ft]	Inclination [°]	Azimuth [°]	TVD [ft]	Vert Sect [ft]	North [ft]	East [ft]	Latitude	Longitude	DLS [°/100ft]	Comments
8541.00	89.870	0.440	7082.58	1335.29	1328.03	1004.63	40°04'40.158"N	104°40'59.171"W	0.91	
8636.00	89.470	0.950	7083.13	1430.29	1423.02	1005.78	40°04'41.096"N	104°40'59.156"W	0.68	
8730.00	90.180	1.070	7083.41	1524.28	1517.01	1007.44	40°04'42.025"N	104°40'59.135"W	0.77	
8824.00	89.870	0.620	7083.37	1618.28	1611.00	1008.83	40°04'42.954"N	104°40'59.117"W	0.58	
8919.00	89.560	359.720	7083.84	1713.27	1705.99	1009.11	40°04'43.893"N	104°40'59.113"W	1.00	
9107.00	91.510	359.850	7082.09	1901.25	1893.97	1008.40	40°04'45.750"N	104°40'59.122"W	1.04	
9201.00	90.860	359.870	7080.15	1995.22	1987.95	1008.17	40°04'46.679"N	104°40'59.125"W	0.69	
9296.00	89.130	359.910	7080.15	2090.21	2082.95	1007.99	40°04'47.618"N	104°40'59.128"W	1.82	
9391.00	89.050	0.170	7081.66	2185.20	2177.94	1008.06	40°04'48.557"N	104°40'59.127"W	0.29	
9485.00	90.060	0.550	7082.39	2279.19	2271.93	1008.65	40°04'49.485"N	104°40'59.119"W	1.15	
9579.00	89.660	0.510	7082.62	2373.19	2365.93	1009.52	40°04'50.414"N	104°40'59.108"W	0.43	
9674.00	88.760	0.340	7083.93	2468.18	2460.91	1010.22	40°04'51.353"N	104°40'59.099"W	0.96	
9768.00	90.090	0.530	7084.88	2562.18	2554.90	1010.93	40°04'52.282"N	104°40'59.089"W	1.43	
9861.00	89.310	1.150	7085.36	2655.17	2647.89	1012.30	40°04'53.201"N	104°40'59.072"W	1.07	
9956.00	88.550	0.120	7087.14	2750.15	2742.87	1013.35	40°04'54.139"N	104°40'59.058"W	1.35	
10050.00	89.440	0.300	7088.79	2844.14	2836.85	1013.70	40°04'55.068"N	104°40'59.054"W	0.97	
10145.00	89.040	0.470	7090.05	2939.13	2931.84	1014.33	40°04'56.007"N	104°40'59.046"W	0.46	
10239.00	90.060	0.660	7090.78	3033.12	3025.83	1015.26	40°04'56.936"N	104°40'59.034"W	1.10	
10333.00	89.190	1.350	7091.40	3127.12	3119.81	1016.91	40°04'57.864"N	104°40'59.012"W	1.18	
10429.00	88.640	1.540	7093.22	3223.08	3215.77	1019.33	40°04'58.813"N	104°40'58.981"W	0.61	
10523.00	89.870	1.820	7094.44	3317.05	3309.72	1022.08	40°04'59.741"N	104°40'58.946"W	1.34	
10617.00	89.070	0.800	7095.31	3411.03	3403.69	1024.23	40°05'00.670"N	104°40'58.918"W	1.38	
10712.00	89.010	359.950	7096.90	3506.02	3498.67	1024.86	40°05'01.608"N	104°40'58.910"W	0.90	
10806.00	88.260	359.850	7099.14	3599.99	3592.64	1024.69	40°05'02.537"N	104°40'58.912"W	0.80	
10901.00	88.670	0.150	7101.68	3694.95	3687.61	1024.69	40°05'03.475"N	104°40'58.912"W	0.53	
10995.00	89.350	0.290	7103.31	3788.93	3781.59	1025.05	40°05'04.404"N	104°40'58.907"W	0.74	
11089.00	90.300	1.040	7103.60	3882.93	3875.58	1026.14	40°05'05.333"N	104°40'58.893"W	1.29	
11184.00	89.500	0.180	7103.76	3977.93	3970.58	1027.15	40°05'06.272"N	104°40'58.880"W	1.24	
11278.00	89.290	0.230	7104.75	4071.92	4064.57	1027.49	40°05'07.201"N	104°40'58.876"W	0.23	
11373.00	88.550	0.290	7106.54	4166.91	4159.55	1027.92	40°05'08.139"N	104°40'58.870"W	0.78	
11467.00	88.600	0.430	7108.88	4260.88	4253.52	1028.51	40°05'09.068"N	104°40'58.862"W	0.16	
11562.00	89.130	0.110	7110.76	4355.86	4348.50	1028.96	40°05'10.006"N	104°40'58.857"W	0.65	
11656.00	89.660	0.260	7111.76	4449.85	4442.49	1029.26	40°05'10.935"N	104°40'58.853"W	0.59	
11751.00	88.920	0.320	7112.93	4544.84	4537.49	1029.74	40°05'11.874"N	104°40'58.846"W	0.78	
11845.00	89.140	0.140	7114.52	4638.83	4631.47	1030.12	40°05'12.803"N	104°40'58.841"W	0.30	
11939.00	88.950	0.370	7116.09	4732.81	4725.46	1030.54	40°05'13.732"N	104°40'58.836"W	0.32	
12034.00	89.440	0.480	7117.43	4827.80	4820.44	1031.24	40°05'14.670"N	104°40'58.827"W	0.53	
12128.00	88.760	0.190	7118.90	4921.79	4914.43	1031.79	40°05'15.599"N	104°40'58.820"W	0.79	
12222.00	88.980	0.480	7120.76	5015.77	5008.41	1032.34	40°05'16.528"N	104°40'58.813"W	0.39	
12317.00	89.320	0.200	7122.17	5110.76	5103.40	1032.91	40°05'17.467"N	104°40'58.805"W	0.46	
12411.00	89.560	0.050	7123.08	5204.76	5197.39	1033.11	40°05'18.395"N	104°40'58.803"W	0.30	
12526.00	90.060	359.690	7123.47	5319.75	5312.39	1032.85	40°05'19.532"N	104°40'58.806"W	0.54	LAST BHI MWD+IFR SURVEY
12581.00	90.060	359.690	7123.41	5374.75	5367.39	1032.55	40°05'20.075"N	104°40'58.810"W	0.00	PROJECTION TO BIT

REFERENCE WELLPATH IDENTIFICATION			
Operator	KERR-MCGEE OIL & GAS ONSHORE LP	Slot	SLOT#03 BOYD 27N-5HZ (303' FSL & 2315' FEL, SEC.05)
Area	COLORADO	Well	BOYD 27N-5HZ
Field	WELD COUNTY (KERR MCGEE)	Wellbore	BOYD 27N-5HZ AWB
Facility	SEC.05-T1N-R65W		

HOLE & CASING SECTIONS - Ref Wellbore: BOYD 27N-5HZ AWB Ref Wellpath: BOYD 27N-5HZ AWP									
String/Diameter	Start MD [ft]	End MD [ft]	Interval [ft]	Start TVD [ft]	End TVD [ft]	Start N/S [ft]	Start E/W [ft]	End N/S [ft]	End E/W [ft]
13.5in Open Hole	25.00	1114.00	1089.00	25.00	1113.98	0.00	0.00	-5.74	-2.01
9.625in Casing Surface	25.00	1113.00	1088.00	25.00	1112.98	0.00	0.00	-5.74	-2.01
8.75in Open Hole	1114.00	7578.00	6464.00	1113.98	7090.82	-5.74	-2.01	365.45	990.86
7in Casing Intermediate	25.00	7568.00	7543.00	25.00	7090.59	0.00	0.00	355.46	990.46
6.125in Open Hole	7578.00	12581.00	5003.00	7090.82	7123.41	365.45	990.86	5367.39	1032.55

TARGETS									
Name	MD [ft]	TVD [ft]	North [ft]	East [ft]	Grid East [US ft]	Grid North [US ft]	Latitude	Longitude	Shape
BOYD PAD HARDLINES LINES (460' SETBACKS SEC.05)		7019.00	44.02	-40.27	3227559.17	1270954.76	40°04'27.469"N	104°41'12.613"W	polygon
BOYD PAD HARDLINES LINES (460' SETBACKS SEC.32)		7019.00	44.02	-40.27	3227559.17	1270954.76	40°04'27.469"N	104°41'12.613"W	polygon
BOYD PAD SECTION LINES (SEC.05)		7019.00	44.02	-40.27	3227559.17	1270954.76	40°04'27.469"N	104°41'12.613"W	polygon
BOYD PAD SECTION LINES (SEC.32)		7019.00	44.02	-40.27	3227559.17	1270954.76	40°04'27.469"N	104°41'12.613"W	polygon
BOYD 27N-5HZ BHL ON PLAT (460' FSL & 1320' FEL, SEC.32) REV-1		7125.00	5392.25	1034.17	3228584.47	1276312.40	40°05'20.321"N	104°40'58.789"W	point
BOYD 27N-5HZ LANDBOX		7125.00	16.48	2024.55	3229624.08	1270946.15	40°04'27.196"N	104°40'46.052"W	polygon

WELLPATH COMPOSITION - Ref Wellbore: BOYD 27N-5HZ AWB Ref Wellpath: BOYD 27N-5HZ AWP				
Start MD [ft]	End MD [ft]	Positional Uncertainty Model	Log Name/Comment	Wellbore
25.00	1041.00	Generic gyro - continuous (Standard)	GYRO SURVEYS <125-1041>	BOYD 27N-5HZ AWB
1041.00	7529.00	NaviTrak (MAGCORR,IFR)	BHI NAVITRAK MWD+IFR 8 3/4" HOLE <1190-7529>	BOYD 27N-5HZ AWB
7529.00	12526.00	NaviTrak (MAGCORR,IFR)	BHI NAVITRAK MWD+IFR 6 1/8" HOLE <7604-XXX	BOYD 27N-5HZ AWB
12526.00	12581.00	Blind Drilling (std)	Projection to bit	BOYD 27N-5HZ AWB

REFERENCE WELLPATH IDENTIFICATION			
Operator	KERR-MCGEE OIL & GAS ONSHORE LP	Slot	SLOT#03 BOYD 27N-5HZ (303' FSL & 2315' FEL, SEC.05)
Area	COLORADO	Well	BOYD 27N-5HZ
Field	WELD COUNTY (KERR MCGEE)	Wellbore	BOYD 27N-5HZ AWB
Facility	SEC.05-T1N-R65W		

WELLPATH COMMENTS				
MD [ft]	Inclination [°]	Azimuth [°]	TVD [ft]	Comment
25.00	0.000	183.490	25.00	TIE ON
125.00	0.380	183.490	125.00	BEGIN GYRO SURVEYS
1041.00	0.340	207.290	1040.98	TIE ONTO GYRO SURVEYS
1190.00	0.040	134.310	1189.98	BEGIN BHI MWD+IFR SURVEYS
7568.00	88.349	2.274	7090.59	7" CASING POINT
12526.00	90.060	359.690	7123.47	LAST BHI MWD+IFR SURVEY
12581.00	90.060	359.690	7123.41	PROJECTION TO BIT