

**ANADARKO PETROLEUM CORP - EBUS
DO NOT MAIL - PO BOX 4995
THE WOODLANDS, Texas**

Paragon 40C-31HZ

Majors 29

Post Job Summary **Cement Surface Casing**

Date Prepared: 1/25/2014
Version: 1

Service Supervisor: BONE, JEFFERSON

Submitted by: GROVES, COREY

HALLIBURTON

Wellbore Geometry

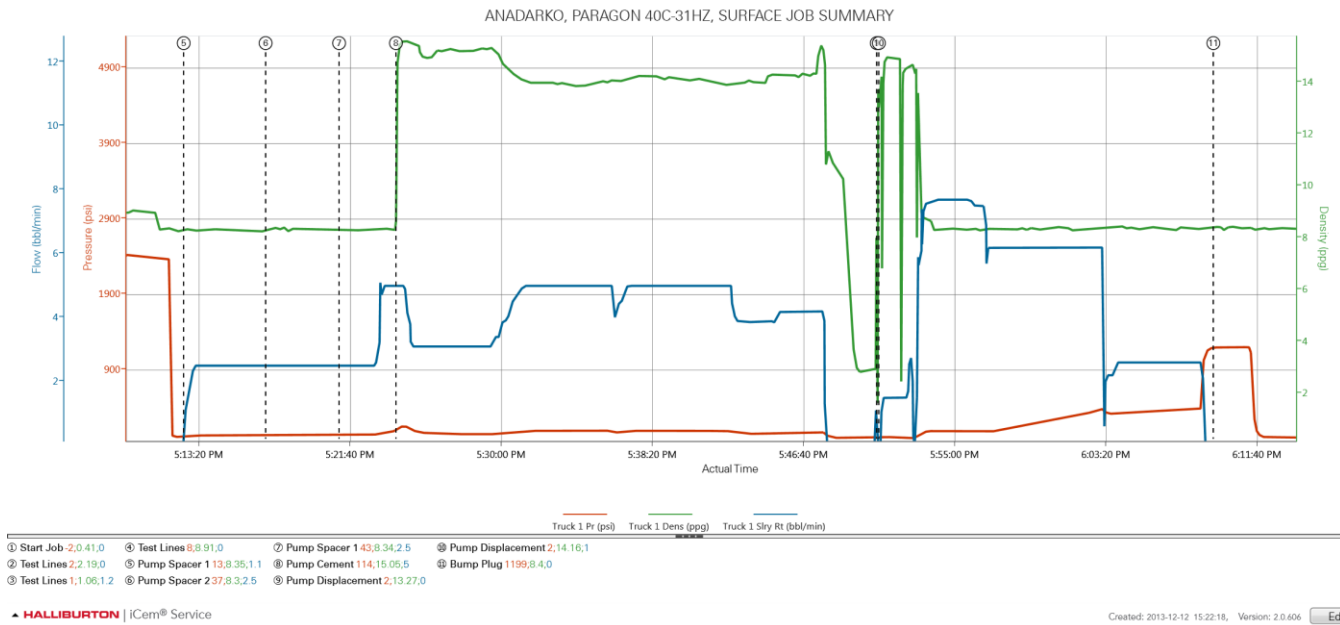
Job Tubulars					MD		Shoe Joint Length ft
Type	Description	Size in	ID in	Wt lbm/ft	Top ft	Bottom ft	
Casing	9 5/8" Surface Casing	9.63	8.921	36.00	0.00	1,086.00	45.00
Open Hole Section	13 1/2" Open Hole Section		13.500		0.00	1,096.00	0.00

HALLIBURTON

Pumping Schedule

Stage /Plug #	Fluid #	Fluid Type	Fluid Name	Surface Density lbm/gal	Avg Rate bbl/min	Surface Volume	Downhole Volume
1	1	Spacer	Fresh Water Spacer	8.33	2.50	10.0 bbl	10.0 bbl
1	2	Spacer	Mud Flush	8.40	2.50	12.0 bbl	12.0 bbl
1	3	Cement Slurry	SwiftCem B2	14.20	5.00	412.0 sacks	412.0 sacks

Data Acquisition



Service Supervisor Reports

Job Log

Date/Time	Chart #	Activity Code	Pump Rate	Cum Vol	Pressure (psig)	Comments
12/12/2013 06:30		Call Out				
12/12/2013 10:00		Safety Meeting - Departing Location				ROAD HAZARDS, ROUTE, CONVOY, FIT FOR DUTY
12/12/2013 10:30		Arrive at Location from Service Center				ARRIVED ON LOCATION, RIG WAS RUNNING CASING
12/12/2013 15:30		Safety Meeting - Pre Rig-Up				PINCH POINTS, LINE OF FIRE, LIFTING, OVERHEAD LOADS, RED ZONES
12/12/2013 15:45		Rig-Up Equipment				
12/12/2013 16:15		Rig-Up Completed				
12/12/2013 16:45		Safety Meeting - Pre Job				CONTINGENCIES, PRESSURE TESTING, MUSTER AREAS, STOP WORK AUTHORITY
12/12/2013 17:04		Start Job				
12/12/2013 17:04		Test Lines				PRESSURE TEST LINES TO 2500 PSI
12/12/2013 17:10		Pump Spacer 1	2.5	10	65.0	RIG WATER
12/12/2013 17:17		Pump Spacer 2	2.5	12	60.0	MUD FLUSH
12/12/2013 17:21		Pump Spacer 1	5	10	80.0	RIG WATER
12/12/2013 17:24		Pump Cement	5	113	65.0	412 SKS 14.2 PPG 1.54 Y 7.66 W MIXED WITH RIG WATER
12/12/2013 17:47		Shutdown				
12/12/2013 17:48		Drop Top Plug				
12/12/2013 17:50		Pump Displacement	6	81	300.0	RIG WATER, WASHED UP ON TOP OF PLUG WITH FIRST 20 BBLS, 5 BBLS OF CEMENT BACK TO SURFACE
12/12/2013 18:07		Bump Plug	2.5		900.0	
12/12/2013 18:09		Check Floats			1200.0	1 BBL BACK TO TRUCK
12/12/2013 18:15		Safety Meeting - Pre Rig-Down				LINE OF FIRE, PINCH POINTS, LIFTING, RED ZONES, OVERHEAD LOADS
12/12/2013 18:30		Rig-Down Equipment				
12/12/2013 19:10		Rig-Down Completed				
12/12/2013 19:15		Safety Meeting - Departing Location				ROUTE, CONVOY, FIT FOR DUTY, ROAD HAZARDS
12/12/2013 19:30		Depart Location for Service Center or Other Site				

The Road to Excellence Starts with Safety

Sold To #: 300466	Ship To #: 3209439	Quote #:	Sales Order #: 900958217
Customer: ANADARKO PETROLEUM CORP - EBUS		Customer Rep: Case, Randy	
Well Name: Paragon		Well #: 40C-31HZ	API/UWI #: 05-123-38540
Field: WATTENBURG	City (SAP): BRIGHTON	County/Parish: Weld	State: Colorado
Lat: N 40.074 deg. OR N 40 deg. 4 min. 27.89 secs.		Long: W 104.698 deg. OR W -105 deg. 18 min. 6.433 secs.	
Contractor: Majors		Rig/Platform Name/Num: Majors 29	
Job Purpose: Cement Surface Casing			
Well Type: Development Well		Job Type: Cement Surface Casing	
Sales Person: PLIENESS, RYAN		Srvc Supervisor: BONE, JEFFERSON	MBU ID Emp #: 491216

Job Personnel

HES Emp Name	Exp Hrs	Emp #	HES Emp Name	Exp Hrs	Emp #	HES Emp Name	Exp Hrs	Emp #
BONE, JEFFERSON Eldon	0.0	491216	BUSHMAN, JOSH M	0.0	530613	MILLS, CHUCK	9.0	777772

Equipment

HES Unit #	Distance-1 way	HES Unit #	Distance-1 way	HES Unit #	Distance-1 way	HES Unit #	Distance-1 way
11501021	20 mile						

Job Hours

Date	On Location Hours	Operating Hours	Date	On Location Hours	Operating Hours	Date	On Location Hours	Operating Hours

TOTAL	Total is the sum of each column separately							
-------	--	--	--	--	--	--	--	--

Job

Job Times

Formation Name					Date	Time	Time Zone
Formation Depth (MD)	Top		Bottom		Called Out	12 - Dec - 2013	06:30 MST
Form Type	BHST				On Location	12 - Dec - 2013	10:30 MST
Job depth MD	1096. ft		Job Depth TVD	1096. ft		Job Started	12 - Dec - 2013 17:04 MST
Water Depth	Wk Ht Above Floor				Job Completed	12 - Dec - 2013	18:09 MST
Perforation Depth (MD)	From		To		Departed Loc	12 - Dec - 2013	19:30 MST

Well Data

Description	New / Used	Max pressure psig	Size in	ID in	Weight lbm/ft	Thread	Grade	Top MD ft	Bottom MD ft	Top TVD ft	Bottom TVD ft
13 1/2" Open Hole Section				13.5				.	1096.		
9 5/8" Surface Casing	Unknown		9.625	8.921	36.		J-55	.	1086.		

Sales/Rental/3rd Party (HES)

Description	Qty	Qty uom	Depth	Supplier
CMT CASING EQUIPMENT BOM	1	JOB		
MILEAGE FOR CEMENTING CREW,ZI	20	MI		
ZI FUEL SURCHG-CARS/PICKUPS<1 1/2TON	20	MI		
KIT,HALL WELD-A	1	EA		
CNTRLZR, 9 5/8"x13 3/4',#500-0963-1375	8	EA		
Description	Qty	Qty uom	Depth	Supplier

BASKET - CEMENT - 9-5/8 CSG X 12-1/4					1	EA			
PLUG,CMTG,TOP,9 5/8,HWE,8.16 MIN/9.06 MA					1	EA			
COLLAR-STOP-9 5/8"-FRICTION-HINGED					2	EA			
Fluid Data									
Stage/Plug #: 1									
Fluid #	Stage Type	Fluid Name	Qty	Qty uom	Mixing Density lbm/gal	Yield ft ³ /sk	Mix Fluid Gal/sk	Rate bbl/min	Total Mix Fluid Gal/sk
1	Fresh Water Spacer		10.00	bbl	8.33			2.50	
2	Mud Flush		12.00	bbl	8.4			2.50	
3.5 lbm/bbl		MUD FLUSH III, 40 LB SACK (101633304)							
42 gal/bbl		MUD FLUSH III - SBM (528788)							
3	SwiftCem B2	SWIFTCEM (TM) SYSTEM (452990)	412.0	sacks	14.2	1.54	7.66	5.00	7.66
7.66 Gal		FRESH WATER							
Calculated Values		Pressures		Volumes					
Displacement		Shut In: Instant		Lost Returns		Cement Slurry		Pad	
Top Of Cement		5 Min		Cement Returns		Actual Displacement		Treatment	
Frac Gradient		15 Min		Spacers		Load and Breakdown		Total Job	
Rates									
Circulating		Mixing		Displacement		Avg. Job			
Cement Left In Pipe		Amount	45 ft	Reason	Shoe Joint				
Frac Ring # 1 @	ID	Frac ring # 2 @	ID	Frac Ring # 3 @	ID	Frac Ring # 4 @	ID		
The Information Stated Herein Is Correct				Customer Representative Signature					

