

# KERR-MCGEE OIL & GAS ONSHORE LP

Location: COLORADO Slot: SLOT#27 NRC 3C-4HZ (350°FSL & 1980°FWL, SEC.9)  
Field: WELD COUNTY (KERR MCGEE) Well: NRC 3C-4HZX  
Facility: SEC.09-T1N-R67W Wellbore: NRC 3C-4HZX PWB

Plot reference wellpath is NRC 3C-4HZX (REV-A.0) PWP

True vertical depths are referenced to XTREME 24 (16' RKB) (RKB)	Grid System: NAD83 / Lambert Colorado SP, Northern Zone (501), US feet
Measured depths are referenced to XTREME 24 (16' RKB) (RKB)	North Reference: True north
XTREME 24 (16' RKB) (RKB) to Mean Sea Level: 5067 feet	Scale: True distance
Mean Sea Level to Mud line (At Slot: SLOT#27 NRC 3C-4HZ (350°FSL & 1980°FWL, SEC.9)): 0 feet	Depths are in feet
Coordinates are in feet referenced to Slot	Created by: wlsjef02 on 3/19/2014

## Location Information

Facility Name				Grid East (US ft)	Grid North (US ft)	Latitude	Longitude
SEC.09-T1N-R67W				3170066.254	1268271.685	40°04'05.506"N	104°53'32.428"W
Slot	Local N (ft)	Local E (ft)	Grid East (US ft)	Grid North (US ft)	Latitude	Longitude	
SLOT#27 NRC 3C-4HZ (350°FSL & 1980°FWL, SEC.9)	-3266.93	-1589.64	3168499.098	1264994.069	40°03'33.221"N	104°53'52.872"W	
XTREME 24 (16' RKB) (RKB) to Mud line (At Slot: SLOT#27 NRC 3C-4HZ (350°FSL & 1980°FWL, SEC.9))						5067ft	
Mean Sea Level to Mud line (At Slot: SLOT#27 NRC 3C-4HZ (350°FSL & 1980°FWL, SEC.9))						0ft	
XTREME 24 (16' RKB) (RKB) to Mean Sea Level						5067ft	

## Survey Program

Start MD (ft)	End MD (ft)	Tool	Model	Log Name/Comment	Wellbore
16.00	972.00	Generic gyro - continuous	Generic gyro - continuous (Standard)		NRC 3C-4HZ AWB
972.00	7976.00	NaviTrak	NaviTrak (MAGCORR,IFR)		NRC 3C-4HZ AWB
7976.00	13679.00	NaviTrak	NaviTrak (MAGCORR,IFR)		NRC 3C-4HZ AWB
13679.00	17394.28	NaviTrak	NaviTrak (MAGCORR,IFR)		NRC 3C-4HZX PWB

## Well Profile Data

Design Comment	MD (ft)	Inc (°)	Az (°)	TVD (ft)	Local N (ft)	Local E (ft)	DLS (°/100ft)	VS (ft)
TIE-INTO OH	13679.00	88.890	1.100	7736.07	6149.84	296.25	3.03	6155.33
BEGIN TURN	13762.98	88.949	0.220	7737.66	6233.81	297.22	1.05	6239.29
END TURN, BEGIN BUILD	14101.93	88.949	7.000	7743.88	6571.82	318.54	2.00	6577.74
END BUILD	14114.96	90.000	7.000	7744.00	6584.76	320.13	8.06	6590.71
BEGIN TURN	14264.96	90.000	7.000	7744.00	6733.64	338.41	0.00	6740.00
END TURN	14539.96	90.000	1.500	7744.00	7007.78	358.79	2.00	7014.57
BEGIN TURN	14639.96	90.000	1.500	7744.00	7107.75	361.40	0.00	7114.57
END TURN	14841.61	90.000	357.467	7744.00	7309.35	359.59	2.00	7316.06
TOTAL DEPTH	17394.28	90.000	357.468	7744.00	9859.52	246.79	0.00	9862.61

## Targets

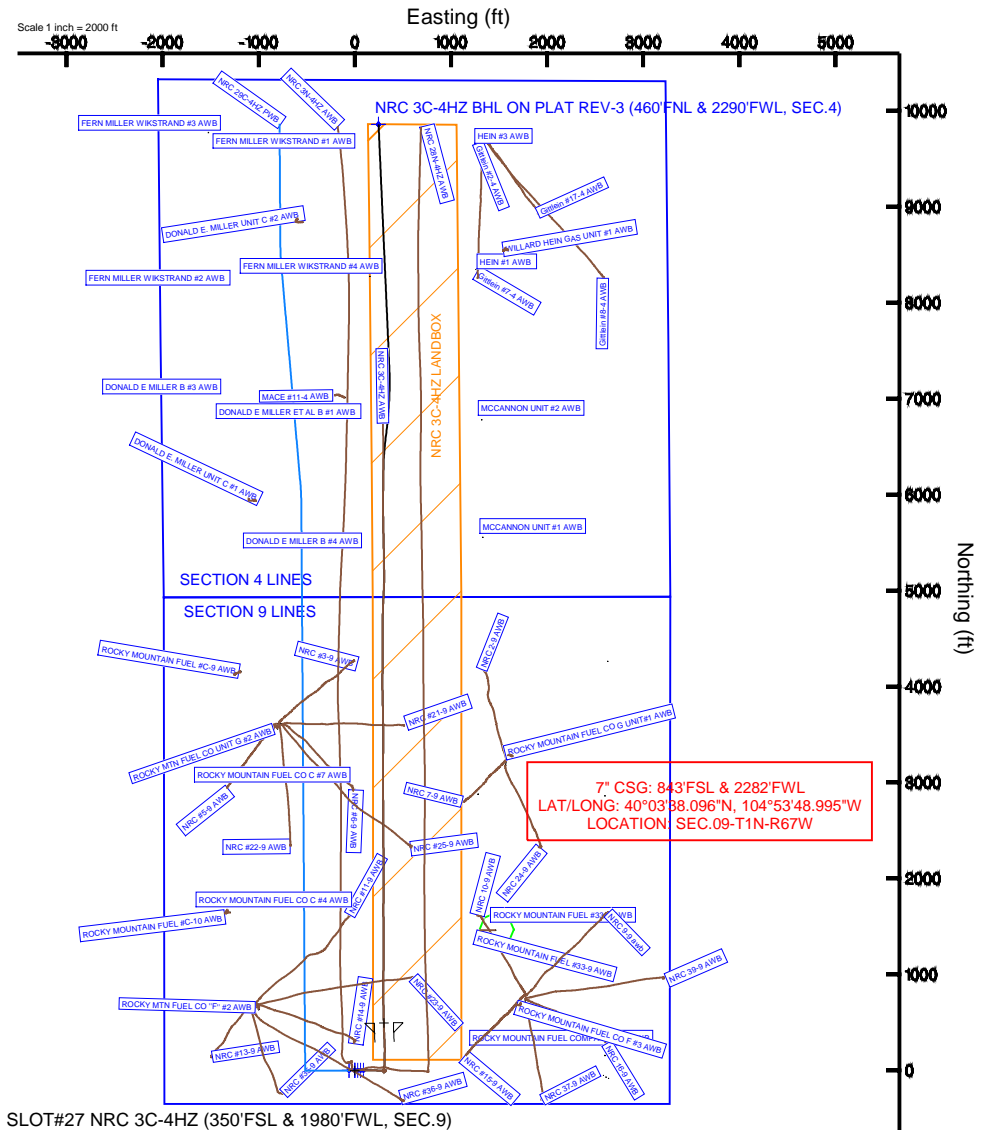
Name	MD (ft)	TVD (ft)	Local N (ft)	Local E (ft)	Grid East (US ft)	Grid North (US ft)	Latitude	Longitude
NRC SECTION 4 LINES		-4.00	0.00	-59.87	3168439.23	1264993.66	40°03'33.221"N	104°53'53.642"W
NRC SECTION 9 LINES		-4.00	0.00	-59.87	3168439.23	1264993.66	40°03'33.221"N	104°53'53.642"W
NRC 3C-4HZ BHL ON PLAT REV-1 (460°FNL & 2290°FWL, SEC.4)	7700.00	9859.52	246.79	3168678.95	1274854.65	40°05'10.655"N	104°53'49.697"W	
NRC 3C-4HZ LANDBOX	7700.00	0.00	0.00	3168499.10	1264994.07	40°03'33.221"N	104°53'52.872"W	
NRC 3C-4HZ BHL ON PLAT REV-2 (460°FNL & 2290°FWL, SEC.4)		7706.00	9859.52	246.79	3168678.94	1274854.65	40°05'10.655"N	104°53'49.697"W
NRC 3C-4HZ BHL ON PLAT REV-3 (460°FNL & 2290°FWL, SEC.4)	17394.28	7744.00	9859.52	246.79	3168678.94	1274854.65	40°05'10.655"N	104°53'49.697"W

True Vertical Depth (ft)  
Scale 1 inch = 1489.09 ft



Vertical Section (ft)

Azimuth 1.43° with reference 0.00 N, 0.00 E



TOTAL DEPTH : 90.00° Inc, 17394.28ft MD, 7744.00ft TVD, 9862.61ft VS  
NRC 3C-4HZ BHL ON PLAT REV-3 (460°FNL & 2290°FWL, SEC.4)

TIE-INTO OH : 88.89° Inc, 13679.00ft MD, 7736.07ft TVD, 6155.33ft VS  
1.05°/100ft  
BEGIN TURN : 88.95° Inc, 13762.98ft MD, 7737.66ft TVD, 6239.29ft VS  
2.00°/100ft  
END TURN, BEGIN BUILD : 88.95° Inc, 14101.93ft MD, 7743.88ft TVD, 6577.74ft VS  
8.06°/100ft  
END BUILD : 90.00° Inc, 14114.96ft MD, 7744.00ft TVD, 6590.71ft VS  
BEGIN TURN : 90.00° Inc, 14264.96ft MD, 7744.00ft TVD, 6740.00ft VS  
2.00°/100ft  
END TURN : 90.00° Inc, 14539.96ft MD, 7744.00ft TVD, 7014.57ft VS  
BEGIN TURN : 90.00° Inc, 14639.96ft MD, 7744.00ft TVD, 7114.57ft VS  
2.00°/100ft  
END TURN : 90.00° Inc, 14841.61ft MD, 7744.00ft TVD, 7316.06ft VS

Scale 1 inch = 1500.01 ft