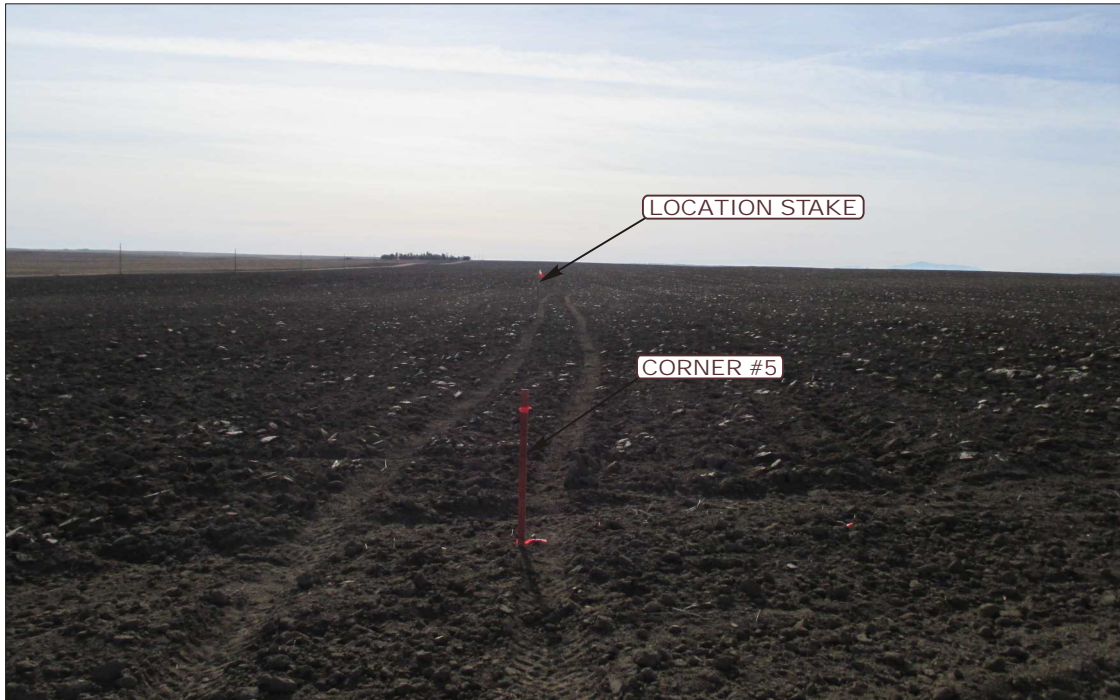
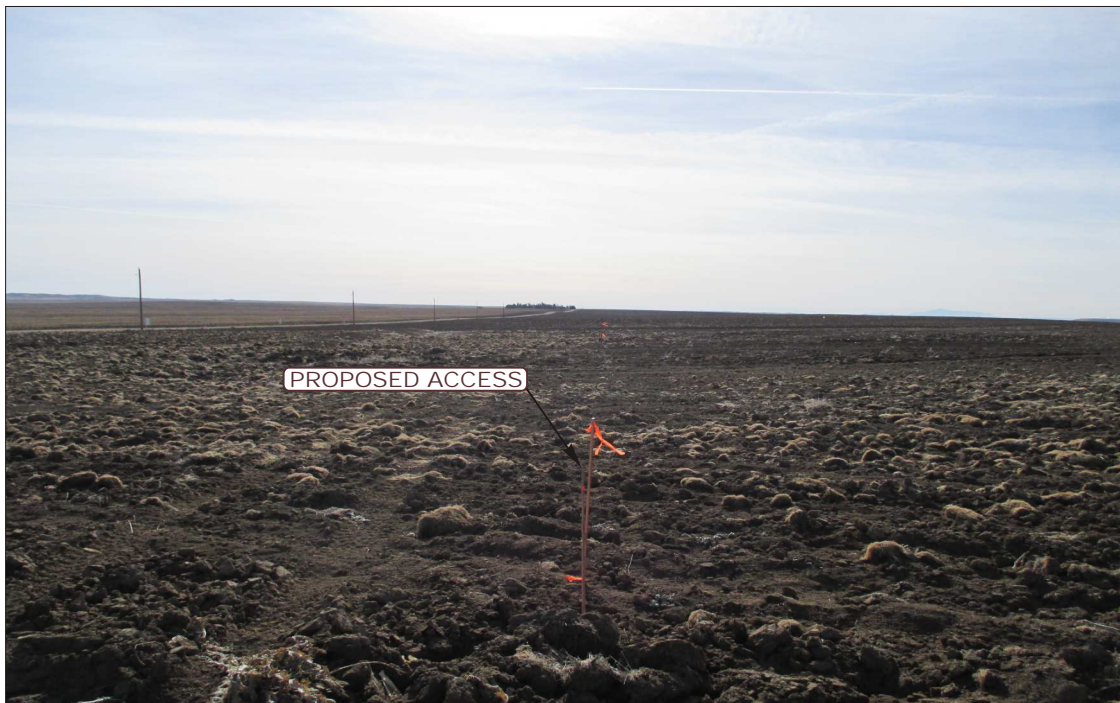


**ConocoPhillips Company**  
**SKY RANCH #4-65 9-10 1H**  
LOCATED IN ARAPAHOE COUNTY, COLORADO  
SECTION 10, T4S, R65W, 6th P.M.



**PHOTO: VIEW FROM CORNER #5 TO LOCATION STAKE**

**CAMERA ANGLE: SOUTHERLY**



**PHOTO: VIEW FROM BEGINNING OF PROPOSED ACCESS**

**CAMERA ANGLE: SOUTHERLY**



- Since 1964 -

**U&LS** Uintah Engineering & Land Surveying  
85 South 200 East Vernal, Utah 84078  
(435) 789-1017 \* FAX (435) 789-1813

**LOCATION PHOTOS**

**08** **22** **13**  
MONTH DAY YEAR

TAKEN BY: B.L.

DRAWN BY: J.L.H.

REV: 01-30-14 J.C.

**PHOTO**  
**P1**

**ConocoPhillips Company**  
**SKY RANCH #4-65 9-10 1H**  
LOCATED IN ARAPAHOE COUNTY, COLORADO  
SECTION 10, T4S, R65W, 6th P.M.



**PHOTO: VIEW OF LOCATION STAKE**

**CAMERA ANGLE: NORTHERLY**



**PHOTO: VIEW OF LOCATION STAKE**

**CAMERA ANGLE: EASTERLY**



- Since 1964 -

**UE&S** Uintah Engineering & Land Surveying  
85 South 200 East Vernal, Utah 84078  
(435) 789-1017 \* FAX (435) 789-1813

**LOCATION PHOTOS**

**08** **22** **13**  
MONTH DAY YEAR

TAKEN BY: B.L.

DRAWN BY: J.L.H.

REV: 01-30-14 J.C.

**PHOTO**  
**P2**



**ConocoPhillips Company**  
**SKY RANCH #4-65 9-10 1H**  
LOCATED IN ARAPAHOE COUNTY, COLORADO  
SECTION 10, T4S, R65W, 6th P.M.



**PHOTO: VIEW OF LOCATION STAKE**

**CAMERA ANGLE: SOUTHERLY**



**PHOTO: VIEW OF LOCATION STAKE**

**CAMERA ANGLE: WESTERLY**



- Since 1964 -

**UELS**

Uintah Engineering & Land Surveying  
85 South 200 East Vernal, Utah 84078  
(435) 789-1017 \* FAX (435) 789-1813

**LOCATION PHOTOS**

**08** **22** **13**  
MONTH DAY YEAR

TAKEN BY: B.L.

DRAWN BY: J.L.H.

REV: 01-30-14 J.C.

**PHOTO**  
**P3**