



**Bill Barrett Corporation**

## COMPANY DETAILS: BILL BARRETT CORP

Calculation Method: Minimum Curvature  
Error System: ISCWSA  
Scan Method: Closest Approach 3D  
Error Surface: Elliptical Conic  
Warning Method: Error Ratio

## REFERENCE INFORMATION

Co-ordinate (N/E) Reference: Well Anschutz Equus Farms 4-62-15-0461CH2, True North  
Vertical (TVD) Reference: KB @ 4541.0ft (Original Well Elev)  
Section (VS) Reference: Slot - (0.0N, 0.0E)  
Measured Depth Reference: KB @ 4541.0ft (Original Well Elev)  
Calculation Method: Minimum Curvature

## WELL DETAILS: Anschutz Equus Farms 4-62-15-0461CH2

+N/-S +E/-W Northing Easting Latitude Longitude  
0.0 0.0 1361269.64 3331029.58 40° 19' 8.411 N 104° 18' 46.120 W

## SECTION DETAILS

Sec	MD	Inc	Azi	TVD	+N/-S	+E/-W	DLeg	TFace	VSec	Target
1	0.0	0.00	0.00	0.0	0.0	0.0	0.00	0.00	0.0	
2	1000.0	0.00	0.00	1000.0	0.0	0.0	0.00	0.00	0.0	
3	1281.3	5.63	54.95	1280.9	7.9	11.3	2.00	54.95	-7.2	
4	5157.8	5.63	54.95	5138.6	226.2	322.5	0.00	0.00	-206.4	
5	5439.1	0.00	178.50	5419.5	234.1	333.8	2.00	180.00	-213.7	
6	5689.1	0.00	178.50	5669.5	234.1	333.8	0.00	178.50	-213.7	
7	6441.8	90.32	178.50	6147.0	-245.9	346.3	12.00	178.50	266.2	AEF 15-0461CH2 LP
8	16226.5	90.32	178.50	6092.0	-10027.1	602.0	0.00	0.00	10045.1	AEF 15-0461CH2 PBHL

## PROJECT DETAILS: WELD COUNTY, COLORADO

Geodetic System: US State Plane 1983  
Datum: North American Datum 1983  
Ellipsoid: GRS 1980  
Zone: Colorado Northern Zone

## FORMATION TOP DETAILS

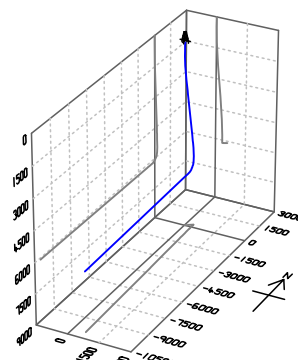
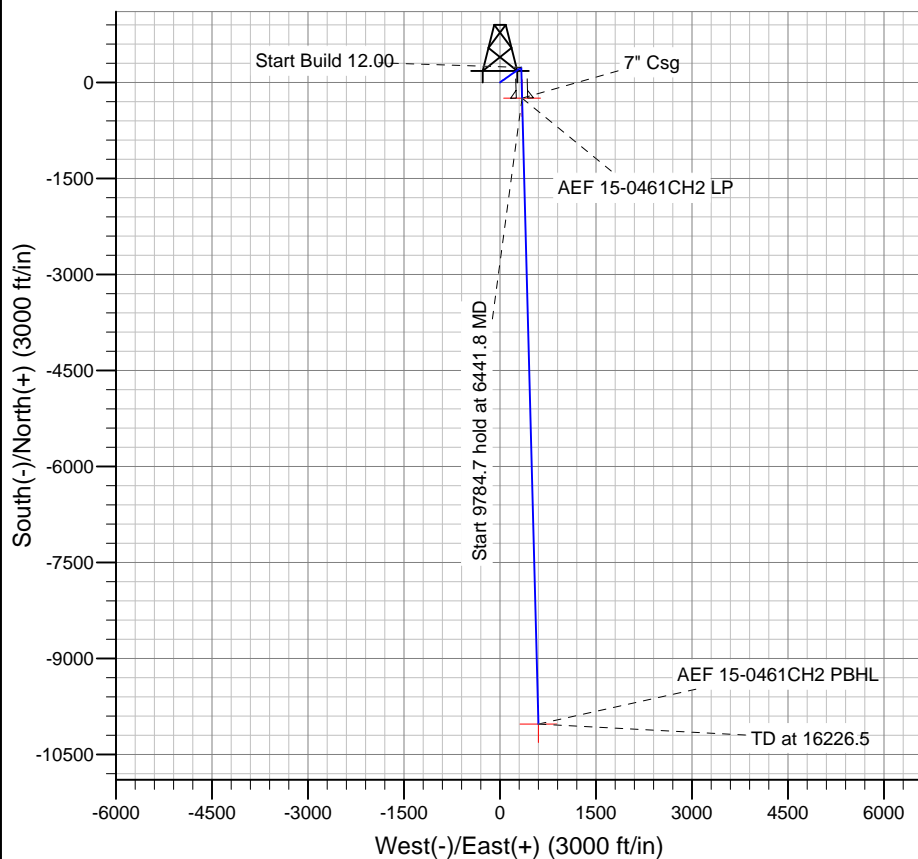
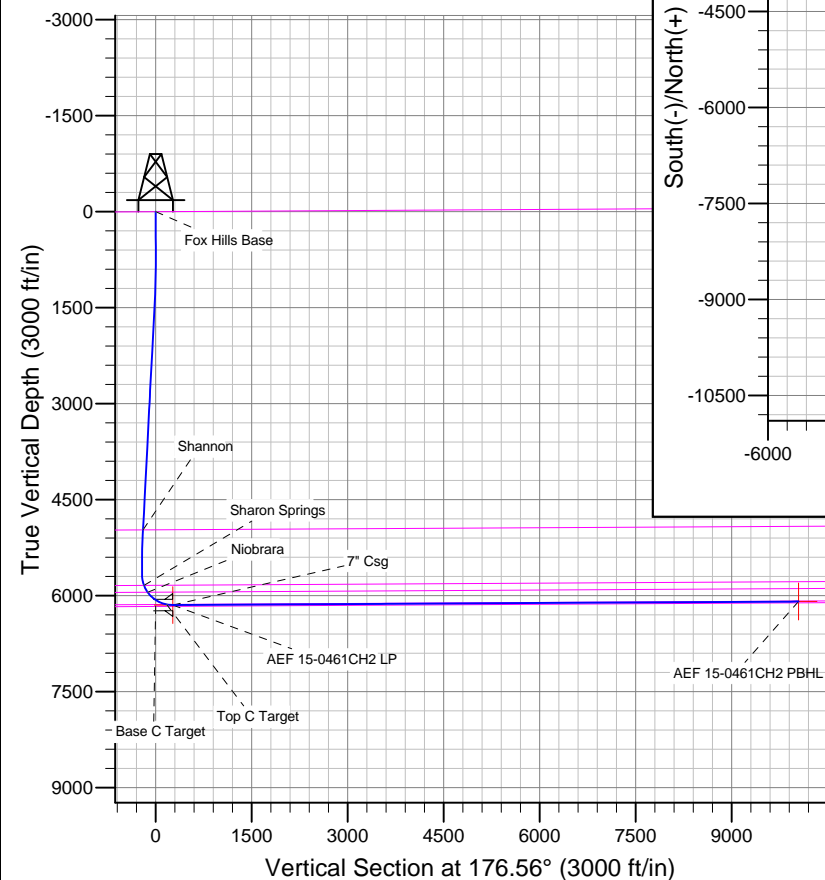
TVDPath	MDPath	Formation
		Base C Target
		Fox Hills Base
4973.2	4991.5	Shannon
5838.1	5861.4	Sharon Springs
5946.8	5984.9	Niobrara
6138.1	6346.8	Top C Target

## WELLBORE TARGET DETAILS

Name	TVD	+N/-S	+E/-W	Shape
AEF 15-0461CH2 PBHL	6092.0	-10027.1	602.0	Point
AEF 15-0461CH2 LP	6147.0	-245.9	346.3	Point

## CASING DETAILS

TVD	MD	Name	Size
6147.0	6441.8	7" Csg	7



Azimuths to True North  
Magnetic North: 8.24°

Magnetic Field  
Strength: 52848.1snT  
Dip Angle: 66.96°  
Date: 3/17/2014  
Model: IGRF2010

# **BILL BARRETT CORP**

**WELD COUNTY, COLORADO**

**Anschutz Equus Farms 4-62-15\_22 NENW Pad**

**Anschutz Equus Farms 4-62-15-0461CH2**

**Wellbore #1**

**Plan: Design #1**

## **Standard Planning Report**

**17 March, 2014**

# Bill Barrett Corp

## Planning Report

<b>Database:</b>	Compass	<b>Local Co-ordinate Reference:</b>	Well Anschutz Equus Farms 4-62-15-0461CH2
<b>Company:</b>	BILL BARRETT CORP	<b>TVD Reference:</b>	KB @ 4541.0ft (Original Well Elev)
<b>Project:</b>	WELD COUNTY, COLORADO	<b>MD Reference:</b>	KB @ 4541.0ft (Original Well Elev)
<b>Site:</b>	Anschutz Equus Farms 4-62-15_22 NENW Pad	<b>North Reference:</b>	True
<b>Well:</b>	Anschutz Equus Farms 4-62-15-0461CH2	<b>Survey Calculation Method:</b>	Minimum Curvature
<b>Wellbore:</b>	Wellbore #1		
<b>Design:</b>	Design #1		

<b>Project</b>	WELD COUNTY, COLORADO		
<b>Map System:</b>	US State Plane 1983	<b>System Datum:</b>	Mean Sea Level
<b>Geo Datum:</b>	North American Datum 1983		
<b>Map Zone:</b>	Colorado Northern Zone		

Site		Anschutz Equus Farms 4-62-15_22 NENW Pad			
Site Position:		Northing:	1,361,267.95 ft	Latitude:	40° 19' 8.400 N
From:	Lat/Long	Easting:	3,330,983.87 ft	Longitude:	104° 18' 46.710 W
Position Uncertainty:	0.0 ft	Slot Radius:	"	Grid Convergence:	0.77 °

Well	Anschutz Equus Farms 4-62-15-0461CH2					
Well Position	+N-S	1.1 ft	Northing:	1,361,269.64 ft	Latitude:	40° 19' 8.411 N
	+E-W	45.7 ft	Easting:	3,331,029.58 ft	Longitude:	104° 18' 46.120 W
Position Uncertainty		0.0 ft	Wellhead Elevation:	ft	Ground Level:	4,518.0ft

<b>Wellbore</b>	Wellbore #1				
<b>Magnetics</b>	<b>Model Name</b>	<b>Sample Date</b>	<b>Declination (°)</b>	<b>Dip Angle (°)</b>	<b>Field Strength (nT)</b>
	IGRF2010	3/17/2014	8.24	66.96	52,848

<b>Design</b>	Design #1			
<b>Audit Notes:</b>				
<b>Version:</b>	<b>Phase:</b>	PLAN	<b>Tie On Depth:</b>	0.0
<b>Vertical Section:</b>	<b>Depth From (TVD) (ft)</b>	<b>+N/-S (ft)</b>	<b>+E/-W (ft)</b>	<b>Direction (°)</b>
	0.0	0.0	0.0	176.56

<b>Plan Sections</b>										
Measured Depth (ft)	Inclination (°)	Azimuth (°)	Vertical Depth (ft)	+N/-S (ft)	+E/-W (ft)	Dogleg Rate (°/100ft)	Build Rate (°/100ft)	Turn Rate (°/100ft)	TFO (°)	Target
0.0	0.00	0.00	0.0	0.0	0.0	0.00	0.00	0.00	0.00	
1,000.0	0.00	0.00	1,000.0	0.0	0.0	0.00	0.00	0.00	0.00	
1,281.3	5.63	54.95	1,280.9	7.9	11.3	2.00	2.00	0.00	54.95	
5,157.8	5.63	54.95	5,138.6	226.2	322.5	0.00	0.00	0.00	0.00	
5,439.1	0.00	178.50	5,419.5	234.1	333.8	2.00	-2.00	0.00	180.00	
5,689.1	0.00	178.50	5,669.5	234.1	333.8	0.00	0.00	0.00	178.50	
6,441.8	90.32	178.50	6,147.0	-245.9	346.3	12.00	12.00	0.00	178.50	AEF 15-0461CH2 L
16,226.5	90.32	178.50	6,092.0	-10,027.1	602.0	0.00	0.00	0.00	0.00	AEF 15-0461CH2 F

# Bill Barrett Corp

## Planning Report

<b>Database:</b>	Compass	<b>Local Co-ordinate Reference:</b>	Well Anschutz Equus Farms 4-62-15-0461CH2
<b>Company:</b>	BILL BARRETT CORP	<b>TVD Reference:</b>	KB @ 4541.0ft (Original Well Elev)
<b>Project:</b>	WELD COUNTY, COLORADO	<b>MD Reference:</b>	KB @ 4541.0ft (Original Well Elev)
<b>Site:</b>	Anschutz Equus Farms 4-62-15_22 NENW Pad	<b>North Reference:</b>	True
<b>Well:</b>	Anschutz Equus Farms 4-62-15-0461CH2	<b>Survey Calculation Method:</b>	Minimum Curvature
<b>Wellbore:</b>	Wellbore #1		
<b>Design:</b>	Design #1		

Planned Survey									
Measured Depth (ft)	Inclination (°)	Azimuth (°)	Vertical Depth (ft)	+N/-S (ft)	+E/-W (ft)	Vertical Section (ft)	Dogleg Rate (°/100ft)	Build Rate (°/100ft)	Turn Rate (°/100ft)
0.0	0.00	0.00	0.0	0.0	0.0	0.0	0.00	0.00	0.00
100.0	0.00	0.00	100.0	0.0	0.0	0.0	0.00	0.00	0.00
200.0	0.00	0.00	200.0	0.0	0.0	0.0	0.00	0.00	0.00
300.0	0.00	0.00	300.0	0.0	0.0	0.0	0.00	0.00	0.00
400.0	0.00	0.00	400.0	0.0	0.0	0.0	0.00	0.00	0.00
500.0	0.00	0.00	500.0	0.0	0.0	0.0	0.00	0.00	0.00
600.0	0.00	0.00	600.0	0.0	0.0	0.0	0.00	0.00	0.00
700.0	0.00	0.00	700.0	0.0	0.0	0.0	0.00	0.00	0.00
800.0	0.00	0.00	800.0	0.0	0.0	0.0	0.00	0.00	0.00
900.0	0.00	0.00	900.0	0.0	0.0	0.0	0.00	0.00	0.00
1,000.0	0.00	0.00	1,000.0	0.0	0.0	0.0	0.00	0.00	0.00
1,100.0	2.00	54.95	1,100.0	1.0	1.4	-0.9	2.00	2.00	0.00
1,200.0	4.00	54.95	1,199.8	4.0	5.7	-3.7	2.00	2.00	0.00
1,281.3	5.63	54.95	1,280.9	7.9	11.3	-7.2	2.00	2.00	0.00
1,300.0	5.63	54.95	1,299.5	9.0	12.8	-8.2	0.00	0.00	0.00
1,400.0	5.63	54.95	1,399.0	14.6	20.8	-13.3	0.00	0.00	0.00
1,500.0	5.63	54.95	1,498.5	20.2	28.9	-18.5	0.00	0.00	0.00
1,600.0	5.63	54.95	1,598.0	25.9	36.9	-23.6	0.00	0.00	0.00
1,700.0	5.63	54.95	1,697.5	31.5	44.9	-28.8	0.00	0.00	0.00
1,800.0	5.63	54.95	1,797.0	37.1	52.9	-33.9	0.00	0.00	0.00
1,900.0	5.63	54.95	1,896.6	42.8	61.0	-39.0	0.00	0.00	0.00
2,000.0	5.63	54.95	1,996.1	48.4	69.0	-44.2	0.00	0.00	0.00
2,100.0	5.63	54.95	2,095.6	54.0	77.0	-49.3	0.00	0.00	0.00
2,200.0	5.63	54.95	2,195.1	59.6	85.0	-54.4	0.00	0.00	0.00
2,300.0	5.63	54.95	2,294.6	65.3	93.1	-59.6	0.00	0.00	0.00
2,400.0	5.63	54.95	2,394.2	70.9	101.1	-64.7	0.00	0.00	0.00
2,500.0	5.63	54.95	2,493.7	76.5	109.1	-69.9	0.00	0.00	0.00
2,600.0	5.63	54.95	2,593.2	82.2	117.2	-75.0	0.00	0.00	0.00
2,700.0	5.63	54.95	2,692.7	87.8	125.2	-80.1	0.00	0.00	0.00
2,800.0	5.63	54.95	2,792.2	93.4	133.2	-85.3	0.00	0.00	0.00
2,900.0	5.63	54.95	2,891.7	99.1	141.2	-90.4	0.00	0.00	0.00
3,000.0	5.63	54.95	2,991.3	104.7	149.3	-95.6	0.00	0.00	0.00
3,100.0	5.63	54.95	3,090.8	110.3	157.3	-100.7	0.00	0.00	0.00
3,200.0	5.63	54.95	3,190.3	116.0	165.3	-105.8	0.00	0.00	0.00
3,300.0	5.63	54.95	3,289.8	121.6	173.3	-111.0	0.00	0.00	0.00
3,400.0	5.63	54.95	3,389.3	127.2	181.4	-116.1	0.00	0.00	0.00
3,500.0	5.63	54.95	3,488.9	132.8	189.4	-121.3	0.00	0.00	0.00
3,600.0	5.63	54.95	3,588.4	138.5	197.4	-126.4	0.00	0.00	0.00
3,700.0	5.63	54.95	3,687.9	144.1	205.5	-131.5	0.00	0.00	0.00
3,800.0	5.63	54.95	3,787.4	149.7	213.5	-136.7	0.00	0.00	0.00
3,900.0	5.63	54.95	3,886.9	155.4	221.5	-141.8	0.00	0.00	0.00
4,000.0	5.63	54.95	3,986.4	161.0	229.5	-146.9	0.00	0.00	0.00
4,100.0	5.63	54.95	4,086.0	166.6	237.6	-152.1	0.00	0.00	0.00
4,200.0	5.63	54.95	4,185.5	172.3	245.6	-157.2	0.00	0.00	0.00
4,300.0	5.63	54.95	4,285.0	177.9	253.6	-162.4	0.00	0.00	0.00
4,400.0	5.63	54.95	4,384.5	183.5	261.7	-167.5	0.00	0.00	0.00
4,500.0	5.63	54.95	4,484.0	189.1	269.7	-172.6	0.00	0.00	0.00
4,600.0	5.63	54.95	4,583.6	194.8	277.7	-177.8	0.00	0.00	0.00
4,700.0	5.63	54.95	4,683.1	200.4	285.7	-182.9	0.00	0.00	0.00
4,800.0	5.63	54.95	4,782.6	206.0	293.8	-188.1	0.00	0.00	0.00
4,900.0	5.63	54.95	4,882.1	211.7	301.8	-193.2	0.00	0.00	0.00
4,991.5	5.63	54.95	4,973.2	216.8	309.1	-197.9	0.00	0.00	0.00

# Bill Barrett Corp

## Planning Report

<b>Database:</b>	Compass	<b>Local Co-ordinate Reference:</b>	Well Anschutz Equus Farms 4-62-15-0461CH2
<b>Company:</b>	BILL BARRETT CORP	<b>TVD Reference:</b>	KB @ 4541.0ft (Original Well Elev)
<b>Project:</b>	WELD COUNTY, COLORADO	<b>MD Reference:</b>	KB @ 4541.0ft (Original Well Elev)
<b>Site:</b>	Anschutz Equus Farms 4-62-15_22 NENW Pad	<b>North Reference:</b>	True
<b>Well:</b>	Anschutz Equus Farms 4-62-15-0461CH2	<b>Survey Calculation Method:</b>	Minimum Curvature
<b>Wellbore:</b>	Wellbore #1		
<b>Design:</b>	Design #1		

Planned Survey									
Measured Depth (ft)	Inclination (°)	Azimuth (°)	Vertical Depth (ft)	+N/-S (ft)	+E/-W (ft)	Vertical Section (ft)	Dogleg Rate (°/100ft)	Build Rate (°/100ft)	Turn Rate (°/100ft)
<b>Shannon</b>									
5,000.0	5.63	54.95	4,981.6	217.3	309.8	-198.3	0.00	0.00	0.00
5,100.0	5.63	54.95	5,081.1	222.9	317.8	-203.5	0.00	0.00	0.00
5,157.8	5.63	54.95	5,138.6	226.2	322.5	-206.4	0.00	0.00	0.00
5,200.0	4.78	54.95	5,180.7	228.4	325.6	-208.5	2.00	-2.00	0.00
5,300.0	2.78	54.95	5,280.5	232.2	331.0	-211.9	2.00	-2.00	0.00
5,400.0	0.78	54.95	5,380.4	234.0	333.6	-213.5	2.00	-2.00	0.00
5,439.1	0.00	178.50	5,419.5	234.1	333.8	-213.7	2.00	-2.00	0.00
5,500.0	0.00	178.50	5,480.4	234.1	333.8	-213.7	0.00	0.00	0.00
5,600.0	0.00	178.50	5,580.4	234.1	333.8	-213.7	0.00	0.00	0.00
5,689.1	0.00	178.50	5,669.5	234.1	333.8	-213.7	0.00	0.00	0.00
5,700.0	1.31	178.50	5,680.4	234.0	333.8	-213.6	12.00	12.00	0.00
5,800.0	13.30	178.50	5,779.4	221.3	334.1	-200.9	12.00	12.00	0.00
5,861.4	20.67	178.50	5,838.1	203.4	334.6	-183.0	12.00	12.00	0.00
<b>Sharon Springs</b>									
5,900.0	25.30	178.50	5,873.6	188.3	335.0	-167.9	12.00	12.00	0.00
5,984.9	35.49	178.50	5,946.8	145.4	336.1	-125.0	12.00	12.00	0.00
<b>Niobrara</b>									
6,000.0	37.30	178.50	5,958.9	136.5	336.3	-116.1	12.00	12.00	0.00
6,100.0	49.30	178.50	6,031.6	68.0	338.1	-47.6	12.00	12.00	0.00
6,200.0	61.30	178.50	6,088.4	-14.0	340.3	34.4	12.00	12.00	0.00
6,300.0	73.30	178.50	6,126.9	-106.1	342.7	126.4	12.00	12.00	0.00
6,346.8	78.92	178.50	6,138.1	-151.5	343.9	171.8	12.00	12.00	0.00
<b>Top C Target</b>									
6,400.0	85.30	178.50	6,145.4	-204.1	345.2	224.4	12.00	12.00	0.00
6,441.8	90.32	178.50	6,147.0	-245.9	346.3	266.2	12.00	12.00	0.00
<b>7" Csg - AEF 15-0461CH2 LP</b>									
6,500.0	90.32	178.50	6,146.7	-304.0	347.8	324.3	0.00	0.00	0.00
6,600.0	90.32	178.50	6,146.1	-404.0	350.5	424.3	0.00	0.00	0.00
6,700.0	90.32	178.50	6,145.5	-504.0	353.1	524.2	0.00	0.00	0.00
6,800.0	90.32	178.50	6,145.0	-603.9	355.7	624.2	0.00	0.00	0.00
6,900.0	90.32	178.50	6,144.4	-703.9	358.3	724.1	0.00	0.00	0.00
7,000.0	90.32	178.50	6,143.9	-803.9	360.9	824.1	0.00	0.00	0.00
7,100.0	90.32	178.50	6,143.3	-903.8	363.5	924.0	0.00	0.00	0.00
7,200.0	90.32	178.50	6,142.7	-1,003.8	366.1	1,023.9	0.00	0.00	0.00
7,300.0	90.32	178.50	6,142.2	-1,103.8	368.7	1,123.9	0.00	0.00	0.00
7,400.0	90.32	178.50	6,141.6	-1,203.7	371.4	1,223.8	0.00	0.00	0.00
7,500.0	90.32	178.50	6,141.1	-1,303.7	374.0	1,323.8	0.00	0.00	0.00
7,600.0	90.32	178.50	6,140.5	-1,403.7	376.6	1,423.7	0.00	0.00	0.00
7,700.0	90.32	178.50	6,139.9	-1,503.6	379.2	1,523.6	0.00	0.00	0.00
7,800.0	90.32	178.50	6,139.4	-1,603.6	381.8	1,623.6	0.00	0.00	0.00
7,900.0	90.32	178.50	6,138.8	-1,703.5	384.4	1,723.5	0.00	0.00	0.00
8,000.0	90.32	178.50	6,138.2	-1,803.5	387.0	1,823.5	0.00	0.00	0.00
8,100.0	90.32	178.50	6,137.7	-1,903.5	389.7	1,923.4	0.00	0.00	0.00
8,200.0	90.32	178.50	6,137.1	-2,003.4	392.3	2,023.3	0.00	0.00	0.00
8,300.0	90.32	178.50	6,136.6	-2,103.4	394.9	2,123.3	0.00	0.00	0.00
8,400.0	90.32	178.50	6,136.0	-2,203.4	397.5	2,223.2	0.00	0.00	0.00
8,500.0	90.32	178.50	6,135.4	-2,303.3	400.1	2,323.2	0.00	0.00	0.00
8,600.0	90.32	178.50	6,134.9	-2,403.3	402.7	2,423.1	0.00	0.00	0.00
8,700.0	90.32	178.50	6,134.3	-2,503.3	405.3	2,523.1	0.00	0.00	0.00
8,800.0	90.32	178.50	6,133.7	-2,603.2	407.9	2,623.0	0.00	0.00	0.00
8,900.0	90.32	178.50	6,133.2	-2,703.2	410.6	2,722.9	0.00	0.00	0.00

# Bill Barrett Corp

## Planning Report

<b>Database:</b>	Compass	<b>Local Co-ordinate Reference:</b>	Well Anschutz Equus Farms 4-62-15-0461CH2
<b>Company:</b>	BILL BARRETT CORP	<b>TVD Reference:</b>	KB @ 4541.0ft (Original Well Elev)
<b>Project:</b>	WELD COUNTY, COLORADO	<b>MD Reference:</b>	KB @ 4541.0ft (Original Well Elev)
<b>Site:</b>	Anschutz Equus Farms 4-62-15_22 NENW Pad	<b>North Reference:</b>	True
<b>Well:</b>	Anschutz Equus Farms 4-62-15-0461CH2	<b>Survey Calculation Method:</b>	Minimum Curvature
<b>Wellbore:</b>	Wellbore #1		
<b>Design:</b>	Design #1		

Planned Survey									
Measured Depth (ft)	Inclination (°)	Azimuth (°)	Vertical Depth (ft)	+N/-S (ft)	+E/-W (ft)	Vertical Section (ft)	Dogleg Rate (°/100ft)	Build Rate (°/100ft)	Turn Rate (°/100ft)
9,000.0	90.32	178.50	6,132.6	-2,803.2	413.2	2,822.9	0.00	0.00	0.00
9,100.0	90.32	178.50	6,132.1	-2,903.1	415.8	2,922.8	0.00	0.00	0.00
9,200.0	90.32	178.50	6,131.5	-3,003.1	418.4	3,022.8	0.00	0.00	0.00
9,300.0	90.32	178.50	6,130.9	-3,103.0	421.0	3,122.7	0.00	0.00	0.00
9,400.0	90.32	178.50	6,130.4	-3,203.0	423.6	3,222.6	0.00	0.00	0.00
9,500.0	90.32	178.50	6,129.8	-3,303.0	426.2	3,322.6	0.00	0.00	0.00
9,600.0	90.32	178.50	6,129.2	-3,402.9	428.8	3,422.5	0.00	0.00	0.00
9,700.0	90.32	178.50	6,128.7	-3,502.9	431.5	3,522.5	0.00	0.00	0.00
9,800.0	90.32	178.50	6,128.1	-3,602.9	434.1	3,622.4	0.00	0.00	0.00
9,900.0	90.32	178.50	6,127.6	-3,702.8	436.7	3,722.3	0.00	0.00	0.00
10,000.0	90.32	178.50	6,127.0	-3,802.8	439.3	3,822.3	0.00	0.00	0.00
10,100.0	90.32	178.50	6,126.4	-3,902.8	441.9	3,922.2	0.00	0.00	0.00
10,200.0	90.32	178.50	6,125.9	-4,002.7	444.5	4,022.2	0.00	0.00	0.00
10,300.0	90.32	178.50	6,125.3	-4,102.7	447.1	4,122.1	0.00	0.00	0.00
10,400.0	90.32	178.50	6,124.8	-4,202.7	449.7	4,222.1	0.00	0.00	0.00
10,500.0	90.32	178.50	6,124.2	-4,302.6	452.4	4,322.0	0.00	0.00	0.00
10,600.0	90.32	178.50	6,123.6	-4,402.6	455.0	4,421.9	0.00	0.00	0.00
10,700.0	90.32	178.50	6,123.1	-4,502.5	457.6	4,521.9	0.00	0.00	0.00
10,800.0	90.32	178.50	6,122.5	-4,602.5	460.2	4,621.8	0.00	0.00	0.00
10,900.0	90.32	178.50	6,121.9	-4,702.5	462.8	4,721.8	0.00	0.00	0.00
11,000.0	90.32	178.50	6,121.4	-4,802.4	465.4	4,821.7	0.00	0.00	0.00
11,100.0	90.32	178.50	6,120.8	-4,902.4	468.0	4,921.6	0.00	0.00	0.00
11,200.0	90.32	178.50	6,120.3	-5,002.4	470.6	5,021.6	0.00	0.00	0.00
11,300.0	90.32	178.50	6,119.7	-5,102.3	473.3	5,121.5	0.00	0.00	0.00
11,400.0	90.32	178.50	6,119.1	-5,202.3	475.9	5,221.5	0.00	0.00	0.00
11,500.0	90.32	178.50	6,118.6	-5,302.3	478.5	5,321.4	0.00	0.00	0.00
11,600.0	90.32	178.50	6,118.0	-5,402.2	481.1	5,421.3	0.00	0.00	0.00
11,700.0	90.32	178.50	6,117.4	-5,502.2	483.7	5,521.3	0.00	0.00	0.00
11,800.0	90.32	178.50	6,116.9	-5,602.2	486.3	5,621.2	0.00	0.00	0.00
11,900.0	90.32	178.50	6,116.3	-5,702.1	488.9	5,721.2	0.00	0.00	0.00
12,000.0	90.32	178.50	6,115.8	-5,802.1	491.5	5,821.1	0.00	0.00	0.00
12,100.0	90.32	178.50	6,115.2	-5,902.0	494.2	5,921.1	0.00	0.00	0.00
12,200.0	90.32	178.50	6,114.6	-6,002.0	496.8	6,021.0	0.00	0.00	0.00
12,300.0	90.32	178.50	6,114.1	-6,102.0	499.4	6,120.9	0.00	0.00	0.00
12,400.0	90.32	178.50	6,113.5	-6,201.9	502.0	6,220.9	0.00	0.00	0.00
12,500.0	90.32	178.50	6,112.9	-6,301.9	504.6	6,320.8	0.00	0.00	0.00
12,600.0	90.32	178.50	6,112.4	-6,401.9	507.2	6,420.8	0.00	0.00	0.00
12,700.0	90.32	178.50	6,111.8	-6,501.8	509.8	6,520.7	0.00	0.00	0.00
12,800.0	90.32	178.50	6,111.3	-6,601.8	512.4	6,620.6	0.00	0.00	0.00
12,900.0	90.32	178.50	6,110.7	-6,701.8	515.1	6,720.6	0.00	0.00	0.00
13,000.0	90.32	178.50	6,110.1	-6,801.7	517.7	6,820.5	0.00	0.00	0.00
13,100.0	90.32	178.50	6,109.6	-6,901.7	520.3	6,920.5	0.00	0.00	0.00
13,200.0	90.32	178.50	6,109.0	-7,001.7	522.9	7,020.4	0.00	0.00	0.00
13,300.0	90.32	178.50	6,108.4	-7,101.6	525.5	7,120.3	0.00	0.00	0.00
13,400.0	90.32	178.50	6,107.9	-7,201.6	528.1	7,220.3	0.00	0.00	0.00
13,500.0	90.32	178.50	6,107.3	-7,301.5	530.7	7,320.2	0.00	0.00	0.00
13,600.0	90.32	178.50	6,106.8	-7,401.5	533.4	7,420.2	0.00	0.00	0.00
13,700.0	90.32	178.50	6,106.2	-7,501.5	536.0	7,520.1	0.00	0.00	0.00
13,800.0	90.32	178.50	6,105.6	-7,601.4	538.6	7,620.1	0.00	0.00	0.00
13,900.0	90.32	178.50	6,105.1	-7,701.4	541.2	7,720.0	0.00	0.00	0.00
14,000.0	90.32	178.50	6,104.5	-7,801.4	543.8	7,819.9	0.00	0.00	0.00
14,100.0	90.32	178.50	6,104.0	-7,901.3	546.4	7,919.9	0.00	0.00	0.00

# Bill Barrett Corp

## Planning Report

<b>Database:</b>	Compass	<b>Local Co-ordinate Reference:</b>	Well Anschutz Equus Farms 4-62-15-0461CH2
<b>Company:</b>	BILL BARRETT CORP	<b>TVD Reference:</b>	KB @ 4541.0ft (Original Well Elev)
<b>Project:</b>	WELD COUNTY, COLORADO	<b>MD Reference:</b>	KB @ 4541.0ft (Original Well Elev)
<b>Site:</b>	Anschutz Equus Farms 4-62-15_22 NENW Pad	<b>North Reference:</b>	True
<b>Well:</b>	Anschutz Equus Farms 4-62-15-0461CH2	<b>Survey Calculation Method:</b>	Minimum Curvature
<b>Wellbore:</b>	Wellbore #1		
<b>Design:</b>	Design #1		

Planned Survey									
Measured Depth (ft)	Inclination (°)	Azimuth (°)	Vertical Depth (ft)	+N/-S (ft)	+E/-W (ft)	Vertical Section (ft)	Dogleg Rate (°/100ft)	Build Rate (°/100ft)	Turn Rate (°/100ft)
14,200.0	90.32	178.50	6,103.4	-8,001.3	549.0	8,019.8	0.00	0.00	0.00
14,300.0	90.32	178.50	6,102.8	-8,101.3	551.6	8,119.8	0.00	0.00	0.00
14,400.0	90.32	178.50	6,102.3	-8,201.2	554.3	8,219.7	0.00	0.00	0.00
14,500.0	90.32	178.50	6,101.7	-8,301.2	556.9	8,319.6	0.00	0.00	0.00
14,600.0	90.32	178.50	6,101.1	-8,401.2	559.5	8,419.6	0.00	0.00	0.00
14,700.0	90.32	178.50	6,100.6	-8,501.1	562.1	8,519.5	0.00	0.00	0.00
14,800.0	90.32	178.50	6,100.0	-8,601.1	564.7	8,619.5	0.00	0.00	0.00
14,900.0	90.32	178.50	6,099.5	-8,701.0	567.3	8,719.4	0.00	0.00	0.00
15,000.0	90.32	178.50	6,098.9	-8,801.0	569.9	8,819.3	0.00	0.00	0.00
15,100.0	90.32	178.50	6,098.3	-8,901.0	572.5	8,919.3	0.00	0.00	0.00
15,200.0	90.32	178.50	6,097.8	-9,000.9	575.2	9,019.2	0.00	0.00	0.00
15,300.0	90.32	178.50	6,097.2	-9,100.9	577.8	9,119.2	0.00	0.00	0.00
15,400.0	90.32	178.50	6,096.6	-9,200.9	580.4	9,219.1	0.00	0.00	0.00
15,500.0	90.32	178.50	6,096.1	-9,300.8	583.0	9,319.1	0.00	0.00	0.00
15,600.0	90.32	178.50	6,095.5	-9,400.8	585.6	9,419.0	0.00	0.00	0.00
15,700.0	90.32	178.50	6,095.0	-9,500.8	588.2	9,518.9	0.00	0.00	0.00
15,800.0	90.32	178.50	6,094.4	-9,600.7	590.8	9,618.9	0.00	0.00	0.00
15,900.0	90.32	178.50	6,093.8	-9,700.7	593.4	9,718.8	0.00	0.00	0.00
16,000.0	90.32	178.50	6,093.3	-9,800.7	596.1	9,818.8	0.00	0.00	0.00
16,100.0	90.32	178.50	6,092.7	-9,900.6	598.7	9,918.7	0.00	0.00	0.00
16,200.0	90.32	178.50	6,092.1	-10,000.6	601.3	10,018.6	0.00	0.00	0.00
16,226.5	90.32	178.50	6,092.0	-10,027.1	602.0	10,045.1	0.00	0.00	0.00
AEF 15-0461CH2 PBHL									

Casing Points				
Measured Depth (ft)	Vertical Depth (ft)	Name	Casing Diameter (")	Hole Diameter (")
6,441.8	6,147.0	7" Csg	7	8-3/4

Formations						
	Measured Depth (ft)	Vertical Depth (ft)	Name	Lithology	Dip (°)	Dip Direction (°)
		0.0	Fox Hills Base		-0.32	178.50
	4,991.5	4,972.0	Shannon		-0.32	178.50
	5,861.4	5,837.0	Sharon Springs		-0.32	178.50
	5,984.9	5,946.0	Niobrara		-0.32	178.50
	6,346.8	6,139.0	Top C Target		-0.32	178.50
		6,167.0	Base C Target		-0.32	178.50