



**COMPANY DETAILS: BILL BARRETT CORP**

Calculation Method: Minimum Curvature  
 Error System: ISCWSA  
 Scan Method: Closest Approach 3D  
 Error Surface: Elliptical Conic  
 Warning Method: Error Ratio

**REFERENCE INFORMATION**

Co-ordinate (N/E) Reference: Well Anschutz Equus Farms 4-62-15-0362CH2, True North  
 Vertical (TVD) Reference: KB @ 4541.0ft (Original Well Elev)  
 Section (VS) Reference: Slot - (0.0N, 0.0E)  
 Measured Depth Reference: KB @ 4541.0ft (Original Well Elev)  
 Calculation Method: Minimum Curvature

**WELL DETAILS: Anschutz Equus Farms 4-62-15-0362CH2**

+N/-S +E/-W Northing Easting Latitude Longitude  
 0.0 0.0 1361268.15 3330999.48 40° 19' 8.400 N 104° 18' 46.508 W

**SECTION DETAILS**

Sec	MD	Inc	Azi	TVD	+N/-S	+E/-W	DLeg	TFace	VSec	Target
1	0.0	0.00	0.00	0.0	0.0	0.0	0.00	0.00	0.0	
2	1000.0	0.00	0.00	1000.0	0.0	0.0	0.00	0.00	0.0	
3	1208.4	4.17	317.88	1208.2	5.6	-5.1	2.00	317.88	-5.7	
4	5232.1	4.17	317.88	5221.3	222.5	-201.2	0.00	0.00	-223.8	
5	5440.6	0.00	178.51	5429.5	228.2	-206.3	2.00	180.00	-229.4	
6	5690.6	0.00	178.51	5679.5	228.2	-206.3	0.00	178.51	-229.4	
7	6443.5	90.35	178.51	6157.0	-252.1	-193.8	12.00	178.51	250.9	AEF 15-0362CH2 LP
8	16219.8	90.35	178.51	6097.0	-10024.9	61.1	0.00	0.00	10025.1	AEF 15-0362CH2 PBHL

**PROJECT DETAILS: WELD COUNTY, COLORADO**

Geodetic System: US State Plane 1983  
 Datum: North American Datum 1983  
 Ellipsoid: GRS 1980  
 Zone: Colorado Northern Zone

**FORMATION TOP DETAILS**

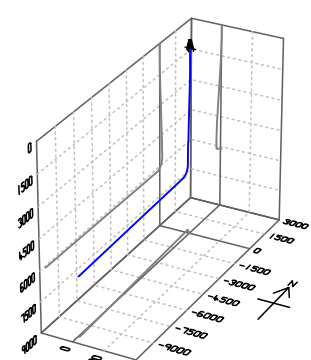
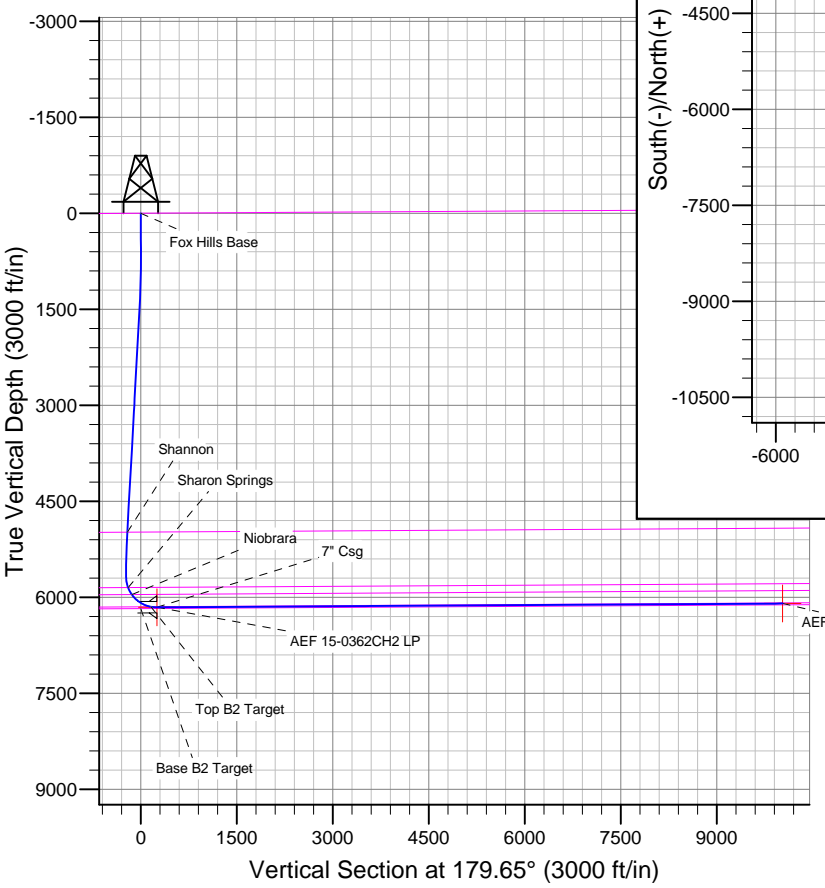
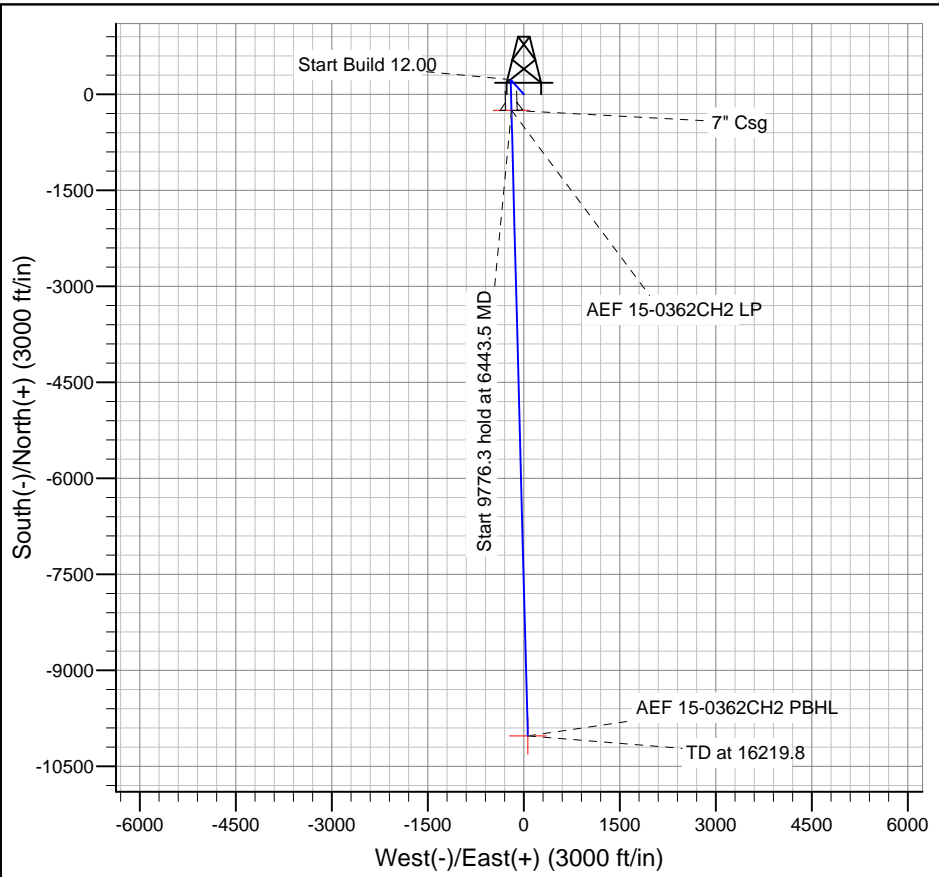
TVDPath	MDPath	Formation
		Base B2 Target
		Fox Hills Base
4983.3	4993.5	Shannon
5848.2	5863.0	Sharon Springs
5956.9	5986.5	Niobrara
6148.1	6348.0	Top B2 Target

**WELLBORE TARGET DETAILS**

Name	TVD	+N/-S	+E/-W	Shape
AEF 15-0362CH2 PBHL	6097.0	-10024.9	61.1	Point
AEF 15-0362CH2 LP	6157.0	-252.1	-193.8	Point

**CASING DETAILS**

TVD	MD	Name	Size
6157.0	6443.5	7" Csg	7



Azimuths to True North  
 Magnetic North: 8.24°  
 Magnetic Field  
 Strength: 52848.0snT  
 Dip Angle: 66.96°  
 Date: 3/17/2014  
 Model: IGRF2010

# **BILL BARRETT CORP**

**WELD COUNTY, COLORADO**

**Anschutz Equus Farms 4-62-15\_22 NENW Pad**

**Anschutz Equus Farms 4-62-15-0362CH2**

**Wellbore #1**

**Plan: Design #1**

## **Standard Planning Report**

**17 March, 2014**

# Bill Barrett Corp

## Planning Report

<b>Database:</b>	Compass	<b>Local Co-ordinate Reference:</b>	Well Anschutz Equus Farms 4-62-15-0362CH2
<b>Company:</b>	BILL BARRETT CORP	<b>TVD Reference:</b>	KB @ 4541.0ft (Original Well Elev)
<b>Project:</b>	WELD COUNTY, COLORADO	<b>MD Reference:</b>	KB @ 4541.0ft (Original Well Elev)
<b>Site:</b>	Anschutz Equus Farms 4-62-15_22 NENW Pad	<b>North Reference:</b>	True
<b>Well:</b>	Anschutz Equus Farms 4-62-15-0362CH2	<b>Survey Calculation Method:</b>	Minimum Curvature
<b>Wellbore:</b>	Wellbore #1		
<b>Design:</b>	Design #1		

<b>Project</b>	WELD COUNTY, COLORADO		
<b>Map System:</b>	US State Plane 1983	<b>System Datum:</b>	Mean Sea Level
<b>Geo Datum:</b>	North American Datum 1983		
<b>Map Zone:</b>	Colorado Northern Zone		

<b>Site</b>	Anschutz Equus Farms 4-62-15_22 NENW Pad				
<b>Site Position:</b>		<b>Northing:</b>	1,361,267.95 ft	<b>Latitude:</b>	40° 19' 8.400 N
<b>From:</b>	Lat/Long	<b>Easting:</b>	3,330,983.87 ft	<b>Longitude:</b>	104° 18' 46.710 W
<b>Position Uncertainty:</b>	0.0 ft	<b>Slot Radius:</b>	"	<b>Grid Convergence:</b>	0.77 °

<b>Well</b>	Anschutz Equus Farms 4-62-15-0362CH2					
<b>Well Position</b>	<b>+N/-S</b>	0.0 ft	<b>Northing:</b>	1,361,268.15 ft	<b>Latitude:</b>	40° 19' 8.400 N
	<b>+E/-W</b>	15.6 ft	<b>Easting:</b>	3,330,999.48 ft	<b>Longitude:</b>	104° 18' 46.508 W
<b>Position Uncertainty</b>		0.0 ft	<b>Wellhead Elevation:</b>	ft	<b>Ground Level:</b>	4,518.0 ft

<b>Wellbore</b>	Wellbore #1				
<b>Magnetics</b>	<b>Model Name</b>	<b>Sample Date</b>	<b>Declination (°)</b>	<b>Dip Angle (°)</b>	<b>Field Strength (nT)</b>
	IGRF2010	3/17/2014	8.24	66.96	52,848

<b>Design</b>	Design #1				
<b>Audit Notes:</b>					
<b>Version:</b>	<b>Phase:</b>	PLAN	<b>Tie On Depth:</b>	0.0	
<b>Vertical Section:</b>	<b>Depth From (TVD) (ft)</b>	<b>+N/-S (ft)</b>	<b>+E/-W (ft)</b>	<b>Direction (°)</b>	
	0.0	0.0	0.0	179.65	

<b>Plan Sections</b>										
Measured Depth (ft)	Inclination (°)	Azimuth (°)	Vertical Depth (ft)	+N/-S (ft)	+E/-W (ft)	Dogleg Rate (°/100ft)	Build Rate (°/100ft)	Turn Rate (°/100ft)	TFO (°)	Target
0.0	0.00	0.00	0.0	0.0	0.0	0.00	0.00	0.00	0.00	
1,000.0	0.00	0.00	1,000.0	0.0	0.0	0.00	0.00	0.00	0.00	
1,208.4	4.17	317.88	1,208.2	5.6	-5.1	2.00	2.00	0.00	317.88	
5,232.1	4.17	317.88	5,221.3	222.5	-201.2	0.00	0.00	0.00	0.00	
5,440.6	0.00	178.51	5,429.5	228.2	-206.3	2.00	-2.00	0.00	180.00	
5,690.6	0.00	178.51	5,679.5	228.2	-206.3	0.00	0.00	0.00	178.51	
6,443.5	90.35	178.51	6,157.0	-252.1	-193.8	12.00	12.00	0.00	178.51	AEF 15-0362CH2 L
16,219.8	90.35	178.51	6,097.0	-10,024.9	61.1	0.00	0.00	0.00	0.00	AEF 15-0362CH2 F

# Bill Barrett Corp

## Planning Report

<b>Database:</b>	Compass	<b>Local Co-ordinate Reference:</b>	Well Anschutz Equus Farms 4-62-15-0362CH2
<b>Company:</b>	BILL BARRETT CORP	<b>TVD Reference:</b>	KB @ 4541.0ft (Original Well Elev)
<b>Project:</b>	WELD COUNTY, COLORADO	<b>MD Reference:</b>	KB @ 4541.0ft (Original Well Elev)
<b>Site:</b>	Anschutz Equus Farms 4-62-15_22 NENW Pad	<b>North Reference:</b>	True
<b>Well:</b>	Anschutz Equus Farms 4-62-15-0362CH2	<b>Survey Calculation Method:</b>	Minimum Curvature
<b>Wellbore:</b>	Wellbore #1		
<b>Design:</b>	Design #1		

Planned Survey									
Measured Depth (ft)	Inclination (°)	Azimuth (°)	Vertical Depth (ft)	+N/-S (ft)	+E/-W (ft)	Vertical Section (ft)	Dogleg Rate (°/100ft)	Build Rate (°/100ft)	Turn Rate (°/100ft)
0.0	0.00	0.00	0.0	0.0	0.0	0.0	0.00	0.00	0.00
100.0	0.00	0.00	100.0	0.0	0.0	0.0	0.00	0.00	0.00
200.0	0.00	0.00	200.0	0.0	0.0	0.0	0.00	0.00	0.00
300.0	0.00	0.00	300.0	0.0	0.0	0.0	0.00	0.00	0.00
400.0	0.00	0.00	400.0	0.0	0.0	0.0	0.00	0.00	0.00
500.0	0.00	0.00	500.0	0.0	0.0	0.0	0.00	0.00	0.00
600.0	0.00	0.00	600.0	0.0	0.0	0.0	0.00	0.00	0.00
700.0	0.00	0.00	700.0	0.0	0.0	0.0	0.00	0.00	0.00
800.0	0.00	0.00	800.0	0.0	0.0	0.0	0.00	0.00	0.00
900.0	0.00	0.00	900.0	0.0	0.0	0.0	0.00	0.00	0.00
1,000.0	0.00	0.00	1,000.0	0.0	0.0	0.0	0.00	0.00	0.00
1,100.0	2.00	317.88	1,100.0	1.3	-1.2	-1.3	2.00	2.00	0.00
1,200.0	4.00	317.88	1,199.8	5.2	-4.7	-5.2	2.00	2.00	0.00
1,208.4	4.17	317.88	1,208.2	5.6	-5.1	-5.7	2.00	2.00	0.00
1,300.0	4.17	317.88	1,299.6	10.6	-9.5	-10.6	0.00	0.00	0.00
1,400.0	4.17	317.88	1,399.3	15.9	-14.4	-16.0	0.00	0.00	0.00
1,500.0	4.17	317.88	1,499.0	21.3	-19.3	-21.5	0.00	0.00	0.00
1,600.0	4.17	317.88	1,598.8	26.7	-24.2	-26.9	0.00	0.00	0.00
1,700.0	4.17	317.88	1,698.5	32.1	-29.0	-32.3	0.00	0.00	0.00
1,800.0	4.17	317.88	1,798.3	37.5	-33.9	-37.7	0.00	0.00	0.00
1,900.0	4.17	317.88	1,898.0	42.9	-38.8	-43.1	0.00	0.00	0.00
2,000.0	4.17	317.88	1,997.7	48.3	-43.7	-48.6	0.00	0.00	0.00
2,100.0	4.17	317.88	2,097.5	53.7	-48.5	-54.0	0.00	0.00	0.00
2,200.0	4.17	317.88	2,197.2	59.1	-53.4	-59.4	0.00	0.00	0.00
2,300.0	4.17	317.88	2,296.9	64.5	-58.3	-64.8	0.00	0.00	0.00
2,400.0	4.17	317.88	2,396.7	69.9	-63.2	-70.2	0.00	0.00	0.00
2,500.0	4.17	317.88	2,496.4	75.2	-68.0	-75.7	0.00	0.00	0.00
2,600.0	4.17	317.88	2,596.1	80.6	-72.9	-81.1	0.00	0.00	0.00
2,700.0	4.17	317.88	2,695.9	86.0	-77.8	-86.5	0.00	0.00	0.00
2,800.0	4.17	317.88	2,795.6	91.4	-82.7	-91.9	0.00	0.00	0.00
2,900.0	4.17	317.88	2,895.3	96.8	-87.5	-97.3	0.00	0.00	0.00
3,000.0	4.17	317.88	2,995.1	102.2	-92.4	-102.8	0.00	0.00	0.00
3,100.0	4.17	317.88	3,094.8	107.6	-97.3	-108.2	0.00	0.00	0.00
3,200.0	4.17	317.88	3,194.5	113.0	-102.2	-113.6	0.00	0.00	0.00
3,300.0	4.17	317.88	3,294.3	118.4	-107.0	-119.0	0.00	0.00	0.00
3,400.0	4.17	317.88	3,394.0	123.8	-111.9	-124.4	0.00	0.00	0.00
3,500.0	4.17	317.88	3,493.8	129.2	-116.8	-129.9	0.00	0.00	0.00
3,600.0	4.17	317.88	3,593.5	134.5	-121.7	-135.3	0.00	0.00	0.00
3,700.0	4.17	317.88	3,693.2	139.9	-126.5	-140.7	0.00	0.00	0.00
3,800.0	4.17	317.88	3,793.0	145.3	-131.4	-146.1	0.00	0.00	0.00
3,900.0	4.17	317.88	3,892.7	150.7	-136.3	-151.5	0.00	0.00	0.00
4,000.0	4.17	317.88	3,992.4	156.1	-141.2	-157.0	0.00	0.00	0.00
4,100.0	4.17	317.88	4,092.2	161.5	-146.0	-162.4	0.00	0.00	0.00
4,200.0	4.17	317.88	4,191.9	166.9	-150.9	-167.8	0.00	0.00	0.00
4,300.0	4.17	317.88	4,291.6	172.3	-155.8	-173.2	0.00	0.00	0.00
4,400.0	4.17	317.88	4,391.4	177.7	-160.7	-178.6	0.00	0.00	0.00
4,500.0	4.17	317.88	4,491.1	183.1	-165.5	-184.1	0.00	0.00	0.00
4,600.0	4.17	317.88	4,590.8	188.5	-170.4	-189.5	0.00	0.00	0.00
4,700.0	4.17	317.88	4,690.6	193.8	-175.3	-194.9	0.00	0.00	0.00
4,800.0	4.17	317.88	4,790.3	199.2	-180.2	-200.3	0.00	0.00	0.00
4,900.0	4.17	317.88	4,890.1	204.6	-185.0	-205.8	0.00	0.00	0.00
4,993.5	4.17	317.88	4,983.3	209.7	-189.6	-210.8	0.00	0.00	0.00

**Bill Barrett Corp**  
Planning Report

<b>Database:</b>	Compass	<b>Local Co-ordinate Reference:</b>	Well Anschutz Equus Farms 4-62-15-0362CH2
<b>Company:</b>	BILL BARRETT CORP	<b>TVD Reference:</b>	KB @ 4541.0ft (Original Well Elev)
<b>Project:</b>	WELD COUNTY, COLORADO	<b>MD Reference:</b>	KB @ 4541.0ft (Original Well Elev)
<b>Site:</b>	Anschutz Equus Farms 4-62-15_22 NENW Pad	<b>North Reference:</b>	True
<b>Well:</b>	Anschutz Equus Farms 4-62-15-0362CH2	<b>Survey Calculation Method:</b>	Minimum Curvature
<b>Wellbore:</b>	Wellbore #1		
<b>Design:</b>	Design #1		

Planned Survey									
Measured Depth (ft)	Inclination (°)	Azimuth (°)	Vertical Depth (ft)	+N/-S (ft)	+E/-W (ft)	Vertical Section (ft)	Dogleg Rate (°/100ft)	Build Rate (°/100ft)	Turn Rate (°/100ft)
<b>Shannon</b>									
5,000.0	4.17	317.88	4,989.8	210.0	-189.9	-211.2	0.00	0.00	0.00
5,100.0	4.17	317.88	5,089.5	215.4	-194.8	-216.6	0.00	0.00	0.00
5,200.0	4.17	317.88	5,189.3	220.8	-199.7	-222.0	0.00	0.00	0.00
5,232.1	4.17	317.88	5,221.3	222.5	-201.2	-223.8	0.00	0.00	0.00
5,300.0	2.81	317.88	5,289.0	225.6	-204.0	-226.8	2.00	-2.00	0.00
5,400.0	0.81	317.88	5,389.0	227.9	-206.1	-229.2	2.00	-2.00	0.00
5,440.6	0.00	178.51	5,429.5	228.2	-206.3	-229.4	2.00	-2.00	0.00
5,500.0	0.00	178.51	5,489.0	228.2	-206.3	-229.4	0.00	0.00	0.00
5,600.0	0.00	178.51	5,589.0	228.2	-206.3	-229.4	0.00	0.00	0.00
5,690.6	0.00	178.51	5,679.5	228.2	-206.3	-229.4	0.00	0.00	0.00
5,700.0	1.13	178.51	5,689.0	228.1	-206.3	-229.3	12.00	12.00	0.00
5,800.0	13.13	178.51	5,788.0	215.7	-206.0	-216.9	12.00	12.00	0.00
5,863.0	20.69	178.51	5,848.2	197.4	-205.5	-198.6	12.00	12.00	0.00
<b>Sharon Springs</b>									
5,900.0	25.13	178.51	5,882.3	183.0	-205.1	-184.2	12.00	12.00	0.00
5,986.5	35.51	178.51	5,956.9	139.4	-204.0	-140.6	12.00	12.00	0.00
<b>Niobrara</b>									
6,000.0	37.13	178.51	5,967.8	131.4	-203.8	-132.6	12.00	12.00	0.00
6,100.0	49.13	178.51	6,040.6	63.1	-202.0	-64.4	12.00	12.00	0.00
6,200.0	61.13	178.51	6,097.7	-18.7	-199.9	17.5	12.00	12.00	0.00
6,300.0	73.13	178.51	6,136.5	-110.7	-197.5	109.5	12.00	12.00	0.00
6,348.0	78.90	178.51	6,148.1	-157.2	-196.3	156.0	12.00	12.00	0.00
<b>Top B2 Target</b>									
6,400.0	85.13	178.51	6,155.3	-208.7	-194.9	207.5	12.00	12.00	0.00
6,443.5	90.35	178.51	6,157.0	-252.1	-193.8	250.9	12.00	12.00	0.00
<b>7" Csg - AEF 15-0362CH2 LP</b>									
6,500.0	90.35	178.51	6,156.7	-308.6	-192.3	307.4	0.00	0.00	0.00
6,600.0	90.35	178.51	6,156.0	-408.5	-189.7	407.4	0.00	0.00	0.00
6,700.0	90.35	178.51	6,155.4	-508.5	-187.1	507.4	0.00	0.00	0.00
6,800.0	90.35	178.51	6,154.8	-608.5	-184.5	607.3	0.00	0.00	0.00
6,900.0	90.35	178.51	6,154.2	-708.4	-181.9	707.3	0.00	0.00	0.00
7,000.0	90.35	178.51	6,153.6	-808.4	-179.3	807.3	0.00	0.00	0.00
7,100.0	90.35	178.51	6,153.0	-908.4	-176.7	907.3	0.00	0.00	0.00
7,200.0	90.35	178.51	6,152.4	-1,008.3	-174.1	1,007.2	0.00	0.00	0.00
7,300.0	90.35	178.51	6,151.7	-1,108.3	-171.5	1,107.2	0.00	0.00	0.00
7,400.0	90.35	178.51	6,151.1	-1,208.3	-168.9	1,207.2	0.00	0.00	0.00
7,500.0	90.35	178.51	6,150.5	-1,308.2	-166.3	1,307.2	0.00	0.00	0.00
7,600.0	90.35	178.51	6,149.9	-1,408.2	-163.6	1,407.2	0.00	0.00	0.00
7,700.0	90.35	178.51	6,149.3	-1,508.1	-161.0	1,507.1	0.00	0.00	0.00
7,800.0	90.35	178.51	6,148.7	-1,608.1	-158.4	1,607.1	0.00	0.00	0.00
7,900.0	90.35	178.51	6,148.1	-1,708.1	-155.8	1,707.1	0.00	0.00	0.00
8,000.0	90.35	178.51	6,147.4	-1,808.0	-153.2	1,807.1	0.00	0.00	0.00
8,100.0	90.35	178.51	6,146.8	-1,908.0	-150.6	1,907.0	0.00	0.00	0.00
8,200.0	90.35	178.51	6,146.2	-2,008.0	-148.0	2,007.0	0.00	0.00	0.00
8,300.0	90.35	178.51	6,145.6	-2,107.9	-145.4	2,107.0	0.00	0.00	0.00
8,400.0	90.35	178.51	6,145.0	-2,207.9	-142.8	2,207.0	0.00	0.00	0.00
8,500.0	90.35	178.51	6,144.4	-2,307.9	-140.2	2,307.0	0.00	0.00	0.00
8,600.0	90.35	178.51	6,143.8	-2,407.8	-137.6	2,406.9	0.00	0.00	0.00
8,700.0	90.35	178.51	6,143.2	-2,507.8	-135.0	2,506.9	0.00	0.00	0.00
8,800.0	90.35	178.51	6,142.5	-2,607.8	-132.4	2,606.9	0.00	0.00	0.00
8,900.0	90.35	178.51	6,141.9	-2,707.7	-129.8	2,706.9	0.00	0.00	0.00

**Bill Barrett Corp**  
Planning Report

<b>Database:</b>	Compass	<b>Local Co-ordinate Reference:</b>	Well Anschutz Equus Farms 4-62-15-0362CH2
<b>Company:</b>	BILL BARRETT CORP	<b>TVD Reference:</b>	KB @ 4541.0ft (Original Well Elev)
<b>Project:</b>	WELD COUNTY, COLORADO	<b>MD Reference:</b>	KB @ 4541.0ft (Original Well Elev)
<b>Site:</b>	Anschutz Equus Farms 4-62-15_22 NENW Pad	<b>North Reference:</b>	True
<b>Well:</b>	Anschutz Equus Farms 4-62-15-0362CH2	<b>Survey Calculation Method:</b>	Minimum Curvature
<b>Wellbore:</b>	Wellbore #1		
<b>Design:</b>	Design #1		

Planned Survey									
Measured Depth (ft)	Inclination (°)	Azimuth (°)	Vertical Depth (ft)	+N/-S (ft)	+E/-W (ft)	Vertical Section (ft)	Dogleg Rate (°/100ft)	Build Rate (°/100ft)	Turn Rate (°/100ft)
9,000.0	90.35	178.51	6,141.3	-2,807.7	-127.1	2,806.9	0.00	0.00	0.00
9,100.0	90.35	178.51	6,140.7	-2,907.6	-124.5	2,906.8	0.00	0.00	0.00
9,200.0	90.35	178.51	6,140.1	-3,007.6	-121.9	3,006.8	0.00	0.00	0.00
9,300.0	90.35	178.51	6,139.5	-3,107.6	-119.3	3,106.8	0.00	0.00	0.00
9,400.0	90.35	178.51	6,138.9	-3,207.5	-116.7	3,206.8	0.00	0.00	0.00
9,500.0	90.35	178.51	6,138.2	-3,307.5	-114.1	3,306.7	0.00	0.00	0.00
9,600.0	90.35	178.51	6,137.6	-3,407.5	-111.5	3,406.7	0.00	0.00	0.00
9,700.0	90.35	178.51	6,137.0	-3,507.4	-108.9	3,506.7	0.00	0.00	0.00
9,800.0	90.35	178.51	6,136.4	-3,607.4	-106.3	3,606.7	0.00	0.00	0.00
9,900.0	90.35	178.51	6,135.8	-3,707.4	-103.7	3,706.7	0.00	0.00	0.00
10,000.0	90.35	178.51	6,135.2	-3,807.3	-101.1	3,806.6	0.00	0.00	0.00
10,100.0	90.35	178.51	6,134.6	-3,907.3	-98.5	3,906.6	0.00	0.00	0.00
10,200.0	90.35	178.51	6,133.9	-4,007.2	-95.9	4,006.6	0.00	0.00	0.00
10,300.0	90.35	178.51	6,133.3	-4,107.2	-93.3	4,106.6	0.00	0.00	0.00
10,400.0	90.35	178.51	6,132.7	-4,207.2	-90.6	4,206.5	0.00	0.00	0.00
10,500.0	90.35	178.51	6,132.1	-4,307.1	-88.0	4,306.5	0.00	0.00	0.00
10,600.0	90.35	178.51	6,131.5	-4,407.1	-85.4	4,406.5	0.00	0.00	0.00
10,700.0	90.35	178.51	6,130.9	-4,507.1	-82.8	4,506.5	0.00	0.00	0.00
10,800.0	90.35	178.51	6,130.3	-4,607.0	-80.2	4,606.5	0.00	0.00	0.00
10,900.0	90.35	178.51	6,129.6	-4,707.0	-77.6	4,706.4	0.00	0.00	0.00
11,000.0	90.35	178.51	6,129.0	-4,807.0	-75.0	4,806.4	0.00	0.00	0.00
11,100.0	90.35	178.51	6,128.4	-4,906.9	-72.4	4,906.4	0.00	0.00	0.00
11,200.0	90.35	178.51	6,127.8	-5,006.9	-69.8	5,006.4	0.00	0.00	0.00
11,300.0	90.35	178.51	6,127.2	-5,106.9	-67.2	5,106.3	0.00	0.00	0.00
11,400.0	90.35	178.51	6,126.6	-5,206.8	-64.6	5,206.3	0.00	0.00	0.00
11,500.0	90.35	178.51	6,126.0	-5,306.8	-62.0	5,306.3	0.00	0.00	0.00
11,600.0	90.35	178.51	6,125.4	-5,406.7	-59.4	5,406.3	0.00	0.00	0.00
11,700.0	90.35	178.51	6,124.7	-5,506.7	-56.7	5,506.3	0.00	0.00	0.00
11,800.0	90.35	178.51	6,124.1	-5,606.7	-54.1	5,606.2	0.00	0.00	0.00
11,900.0	90.35	178.51	6,123.5	-5,706.6	-51.5	5,706.2	0.00	0.00	0.00
12,000.0	90.35	178.51	6,122.9	-5,806.6	-48.9	5,806.2	0.00	0.00	0.00
12,100.0	90.35	178.51	6,122.3	-5,906.6	-46.3	5,906.2	0.00	0.00	0.00
12,200.0	90.35	178.51	6,121.7	-6,006.5	-43.7	6,006.2	0.00	0.00	0.00
12,300.0	90.35	178.51	6,121.1	-6,106.5	-41.1	6,106.1	0.00	0.00	0.00
12,400.0	90.35	178.51	6,120.4	-6,206.5	-38.5	6,206.1	0.00	0.00	0.00
12,500.0	90.35	178.51	6,119.8	-6,306.4	-35.9	6,306.1	0.00	0.00	0.00
12,600.0	90.35	178.51	6,119.2	-6,406.4	-33.3	6,406.1	0.00	0.00	0.00
12,700.0	90.35	178.51	6,118.6	-6,506.4	-30.7	6,506.0	0.00	0.00	0.00
12,800.0	90.35	178.51	6,118.0	-6,606.3	-28.1	6,606.0	0.00	0.00	0.00
12,900.0	90.35	178.51	6,117.4	-6,706.3	-25.5	6,706.0	0.00	0.00	0.00
13,000.0	90.35	178.51	6,116.8	-6,806.2	-22.9	6,806.0	0.00	0.00	0.00
13,100.0	90.35	178.51	6,116.1	-6,906.2	-20.2	6,906.0	0.00	0.00	0.00
13,200.0	90.35	178.51	6,115.5	-7,006.2	-17.6	7,005.9	0.00	0.00	0.00
13,300.0	90.35	178.51	6,114.9	-7,106.1	-15.0	7,105.9	0.00	0.00	0.00
13,400.0	90.35	178.51	6,114.3	-7,206.1	-12.4	7,205.9	0.00	0.00	0.00
13,500.0	90.35	178.51	6,113.7	-7,306.1	-9.8	7,305.9	0.00	0.00	0.00
13,600.0	90.35	178.51	6,113.1	-7,406.0	-7.2	7,405.8	0.00	0.00	0.00
13,700.0	90.35	178.51	6,112.5	-7,506.0	-4.6	7,505.8	0.00	0.00	0.00
13,800.0	90.35	178.51	6,111.9	-7,606.0	-2.0	7,605.8	0.00	0.00	0.00
13,900.0	90.35	178.51	6,111.2	-7,705.9	0.6	7,705.8	0.00	0.00	0.00
14,000.0	90.35	178.51	6,110.6	-7,805.9	3.2	7,805.8	0.00	0.00	0.00
14,100.0	90.35	178.51	6,110.0	-7,905.8	5.8	7,905.7	0.00	0.00	0.00

# Bill Barrett Corp

## Planning Report

<b>Database:</b>	Compass	<b>Local Co-ordinate Reference:</b>	Well Anschutz Equus Farms 4-62-15-0362CH2
<b>Company:</b>	BILL BARRETT CORP	<b>TVD Reference:</b>	KB @ 4541.0ft (Original Well Elev)
<b>Project:</b>	WELD COUNTY, COLORADO	<b>MD Reference:</b>	KB @ 4541.0ft (Original Well Elev)
<b>Site:</b>	Anschutz Equus Farms 4-62-15_22 NENW Pad	<b>North Reference:</b>	True
<b>Well:</b>	Anschutz Equus Farms 4-62-15-0362CH2	<b>Survey Calculation Method:</b>	Minimum Curvature
<b>Wellbore:</b>	Wellbore #1		
<b>Design:</b>	Design #1		

Planned Survey									
Measured Depth (ft)	Inclination (°)	Azimuth (°)	Vertical Depth (ft)	+N/-S (ft)	+E/-W (ft)	Vertical Section (ft)	Dogleg Rate (°/100ft)	Build Rate (°/100ft)	Turn Rate (°/100ft)
14,200.0	90.35	178.51	6,109.4	-8,005.8	8.4	8,005.7	0.00	0.00	0.00
14,300.0	90.35	178.51	6,108.8	-8,105.8	11.0	8,105.7	0.00	0.00	0.00
14,400.0	90.35	178.51	6,108.2	-8,205.7	13.6	8,205.7	0.00	0.00	0.00
14,500.0	90.35	178.51	6,107.6	-8,305.7	16.3	8,305.7	0.00	0.00	0.00
14,600.0	90.35	178.51	6,106.9	-8,405.7	18.9	8,405.6	0.00	0.00	0.00
14,700.0	90.35	178.51	6,106.3	-8,505.6	21.5	8,505.6	0.00	0.00	0.00
14,800.0	90.35	178.51	6,105.7	-8,605.6	24.1	8,605.6	0.00	0.00	0.00
14,900.0	90.35	178.51	6,105.1	-8,705.6	26.7	8,705.6	0.00	0.00	0.00
15,000.0	90.35	178.51	6,104.5	-8,805.5	29.3	8,805.5	0.00	0.00	0.00
15,100.0	90.35	178.51	6,103.9	-8,905.5	31.9	8,905.5	0.00	0.00	0.00
15,200.0	90.35	178.51	6,103.3	-9,005.5	34.5	9,005.5	0.00	0.00	0.00
15,300.0	90.35	178.51	6,102.6	-9,105.4	37.1	9,105.5	0.00	0.00	0.00
15,400.0	90.35	178.51	6,102.0	-9,205.4	39.7	9,205.5	0.00	0.00	0.00
15,500.0	90.35	178.51	6,101.4	-9,305.3	42.3	9,305.4	0.00	0.00	0.00
15,600.0	90.35	178.51	6,100.8	-9,405.3	44.9	9,405.4	0.00	0.00	0.00
15,700.0	90.35	178.51	6,100.2	-9,505.3	47.5	9,505.4	0.00	0.00	0.00
15,800.0	90.35	178.51	6,099.6	-9,605.2	50.1	9,605.4	0.00	0.00	0.00
15,900.0	90.35	178.51	6,099.0	-9,705.2	52.8	9,705.3	0.00	0.00	0.00
16,000.0	90.35	178.51	6,098.3	-9,805.2	55.4	9,805.3	0.00	0.00	0.00
16,100.0	90.35	178.51	6,097.7	-9,905.1	58.0	9,905.3	0.00	0.00	0.00
16,200.0	90.35	178.51	6,097.1	-10,005.1	60.6	10,005.3	0.00	0.00	0.00
16,219.8	90.35	178.51	6,097.0	-10,024.9	61.1	10,025.1	0.00	0.00	0.00
<b>AEF 15-0362CH2 PBHL</b>									

Casing Points				
Measured Depth (ft)	Vertical Depth (ft)	Name	Casing Diameter (")	Hole Diameter (")
6,443.5	6,157.0	7" Csg	7	8-3/4

Formations					
Measured Depth (ft)	Vertical Depth (ft)	Name	Lithology	Dip (°)	Dip Direction (°)
	0.0	Fox Hills Base		-0.35	178.51
4,993.5	4,982.0	Shannon		-0.35	178.51
5,863.0	5,847.0	Sharon Springs		-0.35	178.51
5,986.5	5,956.0	Niobrara		-0.35	178.51
6,348.0	6,149.0	Top B2 Target		-0.35	178.51
	6,177.0	Base B2 Target		-0.35	178.51