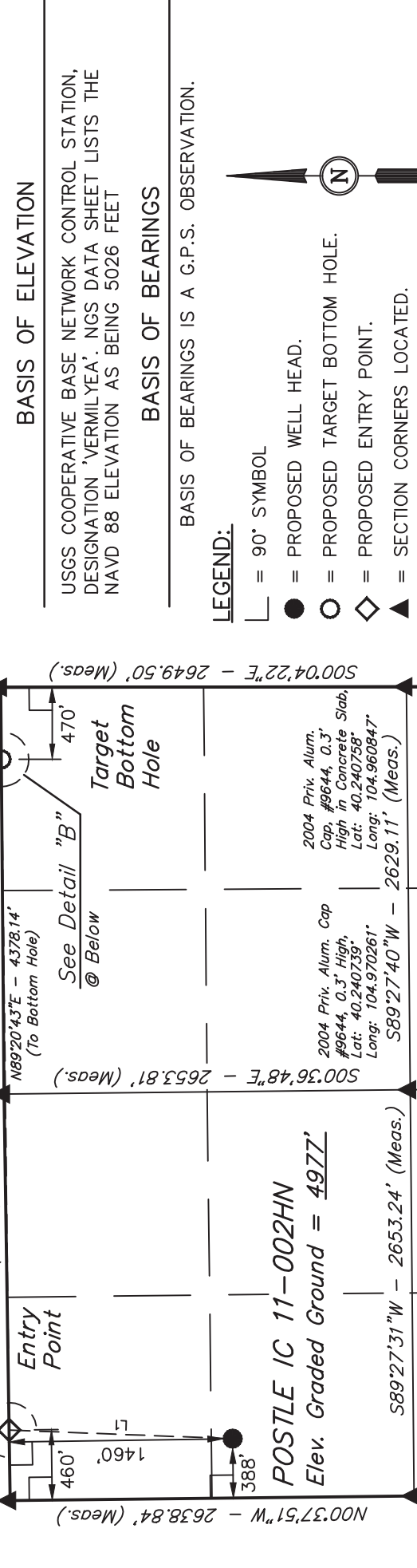


**T3N, R68W, 6th P.M.**  
**GREAT WESTERN OIL & GAS COMPANY**

1996 Priv. Alum. Cap. #4392, 0.3' Below Ground in Monument Box at N-S Asphalt Frontage Road  
Lat: 40.247958° Long: 104.979806°  
See Detail "A" @ Below N89°08'07"E 2654.07' (Meas.)  
2012 Priv. Alum. Cap. #28285 0.5' Below Ground, Lat: 40.248022° Long: 104.970303°  
N89°33'22"E 2654.12' (Meas.)  
Priv. Alum. Cap. #2209 0.8' Below Ground in Gravel Road E-W, Lat: 40.248031° Long: 104.960797°



1996 Priv. Alum. Cap. #4392, 0.3' Below Ground in Monument Box at N-S Asphalt Frontage Road  
Lat: 40.247958° Long: 104.979806°  
See Detail "A" @ Below N89°08'07"E 2654.07' (Meas.)  
2012 Priv. Alum. Cap. #28285 0.5' Below Ground, Lat: 40.248022° Long: 104.970303°  
N89°33'22"E 2654.12' (Meas.)  
Priv. Alum. Cap. #2209 0.8' Below Ground in Gravel Road E-W, Lat: 40.248031° Long: 104.960797°

1996 Priv. Alum. Cap. #4392, 0.3' Below Ground in Monument Box at N-S Asphalt Frontage Road  
Lat: 40.247958° Long: 104.979806°  
See Detail "A" @ Below N89°08'07"E 2654.07' (Meas.)  
2012 Priv. Alum. Cap. #28285 0.5' Below Ground, Lat: 40.248022° Long: 104.970303°  
N89°33'22"E 2654.12' (Meas.)  
Priv. Alum. Cap. #2209 0.8' Below Ground in Gravel Road E-W, Lat: 40.248031° Long: 104.960797°

1996 Priv. Alum. Cap. #4392, 0.3' Below Ground in Monument Box at N-S Asphalt Frontage Road  
Lat: 40.247958° Long: 104.979806°  
See Detail "A" @ Below N89°08'07"E 2654.07' (Meas.)  
2012 Priv. Alum. Cap. #28285 0.5' Below Ground, Lat: 40.248022° Long: 104.970303°  
N89°33'22"E 2654.12' (Meas.)  
Priv. Alum. Cap. #2209 0.8' Below Ground in Gravel Road E-W, Lat: 40.248031° Long: 104.960797°

1996 Priv. Alum. Cap. #4392, 0.3' Below Ground in Monument Box at N-S Asphalt Frontage Road  
Lat: 40.247958° Long: 104.979806°  
See Detail "A" @ Below N89°08'07"E 2654.07' (Meas.)  
2012 Priv. Alum. Cap. #28285 0.5' Below Ground, Lat: 40.248022° Long: 104.970303°  
N89°33'22"E 2654.12' (Meas.)  
Priv. Alum. Cap. #2209 0.8' Below Ground in Gravel Road E-W, Lat: 40.248031° Long: 104.960797°

1996 Priv. Alum. Cap. #4392, 0.3' Below Ground in Monument Box at N-S Asphalt Frontage Road  
Lat: 40.247958° Long: 104.979806°  
See Detail "A" @ Below N89°08'07"E 2654.07' (Meas.)  
2012 Priv. Alum. Cap. #28285 0.5' Below Ground, Lat: 40.248022° Long: 104.970303°  
N89°33'22"E 2654.12' (Meas.)  
Priv. Alum. Cap. #2209 0.8' Below Ground in Gravel Road E-W, Lat: 40.248031° Long: 104.960797°

1996 Priv. Alum. Cap. #4392, 0.3' Below Ground in Monument Box at N-S Asphalt Frontage Road  
Lat: 40.247958° Long: 104.979806°  
See Detail "A" @ Below N89°08'07"E 2654.07' (Meas.)  
2012 Priv. Alum. Cap. #28285 0.5' Below Ground, Lat: 40.248022° Long: 104.970303°  
N89°33'22"E 2654.12' (Meas.)  
Priv. Alum. Cap. #2209 0.8' Below Ground in Gravel Road E-W, Lat: 40.248031° Long: 104.960797°

1996 Priv. Alum. Cap. #4392, 0.3' Below Ground in Monument Box at N-S Asphalt Frontage Road  
Lat: 40.247958° Long: 104.979806°  
See Detail "A" @ Below N89°08'07"E 2654.07' (Meas.)  
2012 Priv. Alum. Cap. #28285 0.5' Below Ground, Lat: 40.248022° Long: 104.970303°  
N89°33'22"E 2654.12' (Meas.)  
Priv. Alum. Cap. #2209 0.8' Below Ground in Gravel Road E-W, Lat: 40.248031° Long: 104.960797°

1996 Priv. Alum. Cap. #4392, 0.3' Below Ground in Monument Box at N-S Asphalt Frontage Road  
Lat: 40.247958° Long: 104.979806°  
See Detail "A" @ Below N89°08'07"E 2654.07' (Meas.)  
2012 Priv. Alum. Cap. #28285 0.5' Below Ground, Lat: 40.248022° Long: 104.970303°  
N89°33'22"E 2654.12' (Meas.)  
Priv. Alum. Cap. #2209 0.8' Below Ground in Gravel Road E-W, Lat: 40.248031° Long: 104.960797°

1996 Priv. Alum. Cap. #4392, 0.3' Below Ground in Monument Box at N-S Asphalt Frontage Road  
Lat: 40.247958° Long: 104.979806°  
See Detail "A" @ Below N89°08'07"E 2654.07' (Meas.)  
2012 Priv. Alum. Cap. #28285 0.5' Below Ground, Lat: 40.248022° Long: 104.970303°  
N89°33'22"E 2654.12' (Meas.)  
Priv. Alum. Cap. #2209 0.8' Below Ground in Gravel Road E-W, Lat: 40.248031° Long: 104.960797°

1996 Priv. Alum. Cap. #4392, 0.3' Below Ground in Monument Box at N-S Asphalt Frontage Road  
Lat: 40.247958° Long: 104.979806°  
See Detail "A" @ Below N89°08'07"E 2654.07' (Meas.)  
2012 Priv. Alum. Cap. #28285 0.5' Below Ground, Lat: 40.248022° Long: 104.970303°  
N89°33'22"E 2654.12' (Meas.)  
Priv. Alum. Cap. #2209 0.8' Below Ground in Gravel Road E-W, Lat: 40.248031° Long: 104.960797°

1996 Priv. Alum. Cap. #4392, 0.3' Below Ground in Monument Box at N-S Asphalt Frontage Road  
Lat: 40.247958° Long: 104.979806°  
See Detail "A" @ Below N89°08'07"E 2654.07' (Meas.)  
2012 Priv. Alum. Cap. #28285 0.5' Below Ground, Lat: 40.248022° Long: 104.970303°  
N89°33'22"E 2654.12' (Meas.)  
Priv. Alum. Cap. #2209 0.8' Below Ground in Gravel Road E-W, Lat: 40.248031° Long: 104.960797°

**BASIS OF ELEVATION**

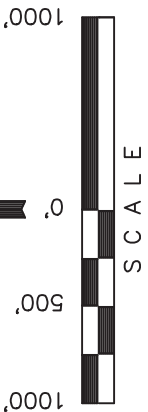
USGS COOPERATIVE BASE NETWORK CONTROL STATION, DESIGNATION 'VERMILYEA'. NGS DATA SHEET LISTS THE NAVD 88 ELEVATION AS BEING 5026 FEET

**BASIS OF BEARINGS**

BASIS OF BEARINGS IS A G.P.S. OBSERVATION.

**LEGEND:**

- = 90° SYMBOL
- = PROPOSED WELL HEAD.
- = PROPOSED TARGET BOTTOM HOLE.
- ◇ = PROPOSED ENTRY POINT.
- ▲ = SECTION CORNERS LOCATED.



LINE TABLE	
LINE	DIRECTION LENGTH
L1	N02°12'41"E 1460.70'

**CERTIFICATE**

THIS IS TO CERTIFY THAT THE ABOVE PLAT WAS PREPARED FROM FIELD NOTES OF ACTUAL SURVEYS MADE BY ME OR UNDER MY SUPERVISION AND THAT THE SAME ARE TRUE AND CORRECT TO THE BEST OF MY KNOWLEDGE AND BELIEF.

REVISED: 02-26-14 J.S.  
REVISED: 12-26-13 J.S.  
REVISED: 11-21-13

**UNTAH ENGINEERING & LAND SURVEYING**  
**85 SOUTH 200 EAST - VERNAL, UTAH 84078**  
**(435) 789-1017**

SCALE 1" = 1000'	DATE SURVEYED: 04-19-13	DATE DRAWN: 09-12-13
PARTY DALLAS NIELSEN G.W. J.W.	REFERENCES G.L.O. PLAT	
WEATHER COOL	FILE GREAT WESTERN OIL & GAS COMPANY	

PDOP = 1.9	
NAD 83 (TARGET BOTTOM HOLE)	NAD 83 (ENTRY POINT)
LATITUDE = 40°14'52.89" (40.248025) LONGITUDE = 104°57'44.93" (104.962481)	LATITUDE = 40°14'52.68" (40.247967) LONGITUDE = 104°58'41.37" (104.978158)
NAD 27 (TARGET BOTTOM HOLE)	NAD 27 (ENTRY POINT)
LATITUDE = 40°14'52.95" (40.248042) LONGITUDE = 104°57'43.01" (104.961947)	LATITUDE = 40°14'52.74" (40.247983) LONGITUDE = 104°58'39.45" (104.977625)
NAD 83 (SURFACE LOCATION)	
LATITUDE = 40°14'38.26" (40.243961) LONGITUDE = 104°58'42.22" (104.978394)	
NAD 27 (SURFACE LOCATION)	
LATITUDE = 40°14'38.32" (40.243978) LONGITUDE = 104°58'40.30" (104.977861)	