

1801 Broadway  
Suite 500  
Denver, Colorado 80202



Brittany Vannoy  
Regulatory Compliance Specialist  
Tel: 303.398.0397  
E-mail: bvannoy@gwogco.com

February 27, 2013

Colorado Oil and Gas Conservation Commission  
1120 Lincoln Street, Suite 801  
Denver, Colorado 80203

RE: **Proposed Wellbore Spacing Unit**  
Postle IC 11-002HN

Niobrara New Drill  
Township 3 North, Range 68 West, 6<sup>th</sup> P.M.  
Section 11  
Weld County, Colorado

Dear Director:

Great Western Operating Company, LLC is planning to drill the above captioned well in accordance with the provisions of COGCC Rule 318(l)e(2).

Great Western proposed wellbore spacing unit consists of:

- **S2S2 Sec 2-T3N-R68W**
- **N2N2 Sec 11-T3N-R68W**

The 30 day notification time has passed and we have not received any objections to such well locations or proposed spacing unit, therefore Great Western hereby requests the Director to approve the above mentioned well. Great Western Operating Company, LLC respectfully requests that the COGCC review the enclosed map illustrating the proposed wellbore spacing unit.

Respectfully,

A handwritten signature in blue ink that reads "Brittany Vannoy".

Brittany Vannoy  
Regulatory Compliance Specialist  
Great Western Operating Company, LLC

# GREAT WESTERN OIL & GAS COMPANY

Well location, POSTLE IC 11-002HN, located as shown in the SW 1/4 NW 1/4 of Section 11, T3N, R68W, 6th P.M., Weld County, Colorado.

## BASIS OF ELEVATION

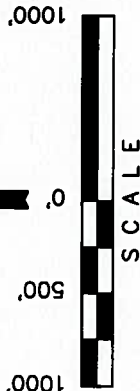
USGS COOPERATIVE BASE NETWORK CONTROL STATION, DESIGNATION 'VERMILYEA', NGS DATA SHEET LISTS THE NAVD 88 ELEVATION AS BEING 5026 FEET

## BASIS OF BEARINGS

BASIS OF BEARINGS IS A G.P.S. OBSERVATION.

## LEGEND:

- = 90° SYMBOL
- = PROPOSED WELL HEAD.
- = PROPOSED TARGET BOTTOM HOLE.
- ◇ = PROPOSED ENTRY POINT.
- ▲ = SECTION CORNERS LOCATED.



LINE TABLE	
LINE	DIRECTION LENGTH
L1	N02°12'41"E 1480.70'

## CERTIFICATE

THIS IS TO CERTIFY THAT THE ABOVE PLATON WAS PREPARED FROM FIELD NOTES OF ACTUAL SURVEYS MADE BY ME OR UNDER MY SUPERVISION AND THAT THE SAME ARE TRUE AND CORRECT TO THE BEST OF MY KNOWLEDGE AND BELIEF.

REGISTERED LAND SURVEYOR  
REGISTRATION NO. 12499  
STATE OF COLORADO 69-26-14

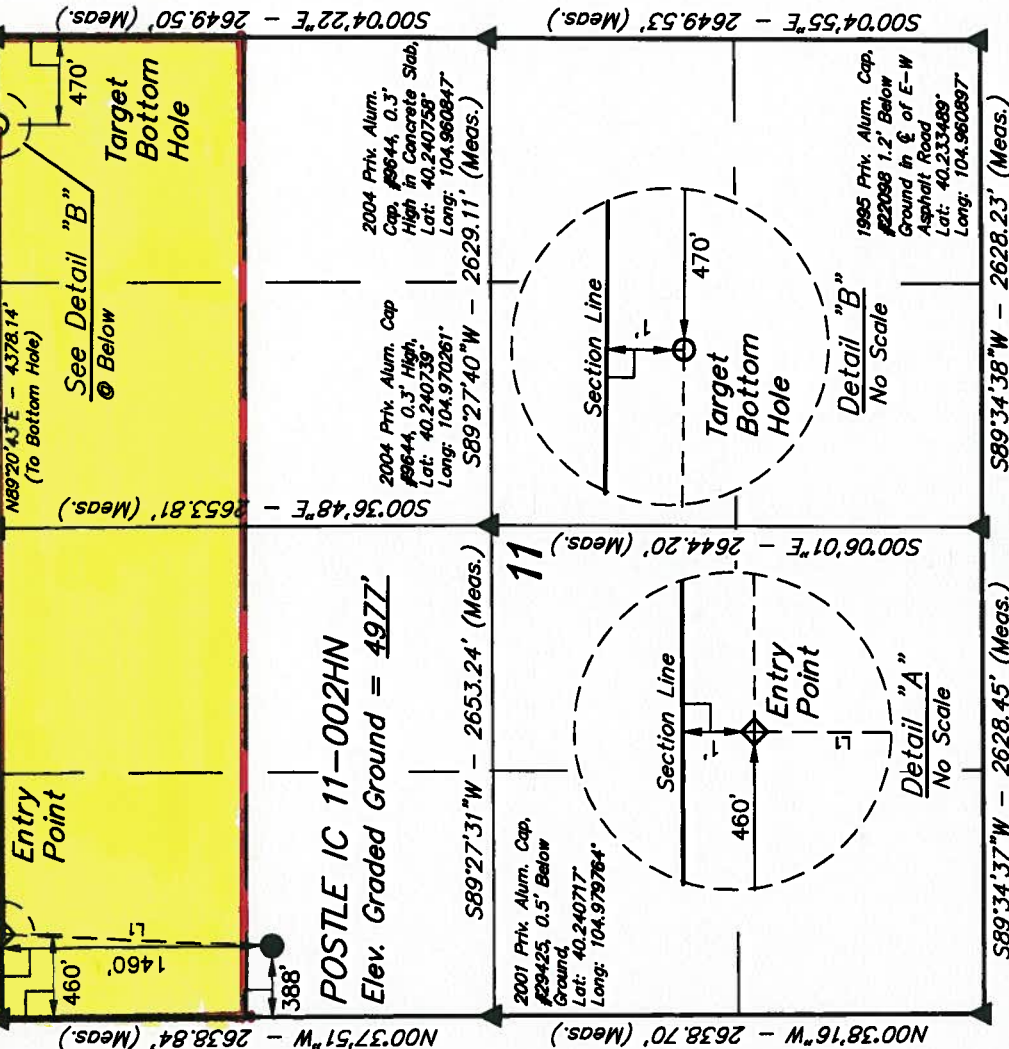
## UTIAH ENGINEERING & LAND SURVEYING

85 SOUTH 200 EAST - VERNAL, UTAH 84078  
(435) 789-1017

SCALE	1" = 1000'	DATE SURVEYED:	04-19-13	DATE DRAWN:	09-12-13
PARTY	DALLAS NIELSEN G.W. J.W.	REFERENCES	G.L.O. PLAT		
WEATHER	COOL	FILE	GREAT WESTERN OIL & GAS COMPANY		

# T3N, R68W, 6th P.M.

1986 Priv. Alum. Cap. #4392, 0.3' Below Ground in Monument Box at E of Asphalt Road, Lat: 40.247958, Long: 104.978906.  
See Detail "A" @ Below N89°08'07"E 2654.07' (Meas.)  
2012 Priv. Alum. Cap. #28285, 0.5' Below Ground, Lat: 40.248022, Long: 104.970303.  
N89°33'22"E 2654.12' (Meas.)  
1985 Priv. Alum. Cap. #2209, 0.8' Below Ground in Gravel Road E-W, Lat: 40.248131, Long: 104.970797.



2005 Priv. Alum. Cap. #22088, 0.5' Below Ground, in Monument Box at E of Asphalt Road, Lat: 40.233475, Long: 104.978719.  
S89°34'37\"/>

NAD 83 (TARGET BOTTOM HOLE)		NAD 83 (ENTRY POINT)		NAD 83 (SURFACE LOCATION)	
LATITUDE = 40°14'52.89"	(40.248025)	LATITUDE = 40°14'52.68"	(40.247867)	LATITUDE = 40°14'58.28"	(40.243961)
LONGITUDE = 104°57'44.93"	(104.962481)	LONGITUDE = 104°58'41.37"	(104.978158)	LONGITUDE = 104°58'42.22"	(104.978394)
NAD 27 (TARGET BOTTOM HOLE)		NAD 27 (ENTRY POINT)		NAD 27 (SURFACE LOCATION)	
LATITUDE = 40°14'52.85"	(40.248042)	LATITUDE = 40°14'52.74"	(40.247983)	LATITUDE = 40°14'58.32"	(40.243978)
LONGITUDE = 104°57'43.01"	(104.961947)	LONGITUDE = 104°58'39.45"	(104.977625)	LONGITUDE = 104°58'40.30"	(104.977861)

PDOP = 1.9