

1996 Priv. Alum. Cap.
#4392, 0.3' Below
Ground in Monument
Box in N-S
Asphalt Frontage Road
Lat: 40.247958°
Long: 104.979806°

T3N, R68W, 6th P.M.

2012 Priv. Alum. Cap. #28285
0.5' Below Ground,
Lat: 40.248022°
Long: 104.970303°

N89°08'07"E
2654.07' (Meas.)

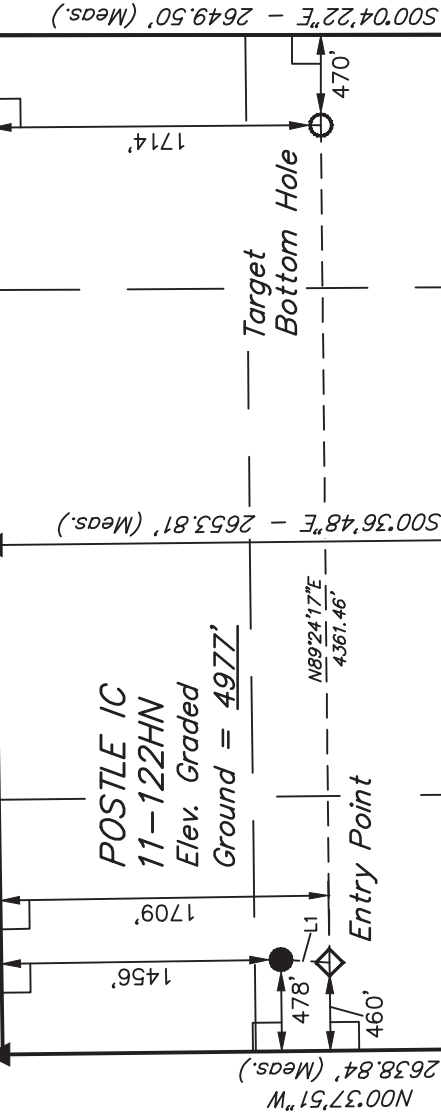
N89°33'22"E
2654.12' (Meas.)

Priv. Alum. Cap. #2209
0.8' Below Ground in
Gravel Road E-W
Lat: 40.248031°
Long: 104.960797°

GREAT WESTERN OIL & GAS COMPANY

Well location, POSTLE IC 11-122HN, located as shown in the SW 1/4 NW 1/4 of Section 11, T3N, R68W, 6th P.M., Weld County, Colorado.

POSTLE IC
11-122HN
Elev. Graded
Ground = 4977'



BASIS OF ELEVATION

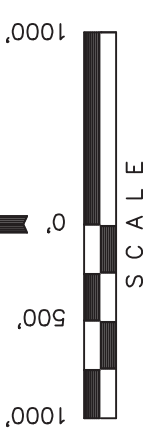
USGS COOPERATIVE BASE NETWORK CONTROL STATION, DESIGNATION 'VERMILYEA'. NGS DATA SHEET LISTS THE NAVD 88 ELEVATION AS BEING 5026 FEET

BASIS OF BEARINGS

BASIS OF BEARINGS IS A G.P.S. OBSERVATION.

LEGEND:

- = 90° SYMBOL
- = PROPOSED WELL HEAD.
- = PROPOSED TARGET BOTTOM HOLE.
- ◇ = PROPOSED ENTRY POINT.
- ▲ = SECTION CORNERS LOCATED.



LINE TABLE		
LINE	DIRECTION	LENGTH
L1	S03°19'26"W	253.76'

CERTIFICATE

THIS IS TO CERTIFY THAT THE ABOVE PLAT WAS PREPARED FROM FIELD NOTES OF ACTUAL SURVEYS MADE BY ME OR UNDER MY SUPERVISION AND THAT THE SAME ARE TRUE AND CORRECT TO THE BEST OF MY KNOWLEDGE AND BELIEF.

REVISED: 02-26-14 J.S.
REVISED: 11-21-13
REVISED: 09-12-13
REVISED: 06-11-13

REGISTERED LAND SURVEYOR
REGISTRATION #17492
STATE OF COLORADO
02-26-14

UNTAH ENGINEERING & LAND SURVEYING
85 SOUTH 200 EAST - VERNAL, UTAH 84078
(435) 789-1017

SCALE 1" = 1000'	DATE SURVEYED: 04-19-13	DATE DRAWN: 04-22-13
PARTY DALLAS NIELSEN G.W. J.W.	REFERENCES G.L.O. PLAT	
WEATHER COOL	FILE GREAT WESTERN OIL & GAS COMPANY	

PDOP = 1.9			
NAD 83 (TARGET BOTTOM HOLE)	NAD 83 (ENTRY POINT)	NAD 83 (SURFACE LOCATION)	
LATITUDE = 40°14'35.97" (40.243326) LONGITUDE = 104°57'45.05" (104.962514)	LATITUDE = 40°14'35.80" (40.243278) LONGITUDE = 104°58'41.27" (104.978131)	LATITUDE = 40°14'38.30" (40.243972) LONGITUDE = 104°58'41.06" (104.978072)	
NAD 27 (TARGET BOTTOM HOLE)	NAD 27 (ENTRY POINT)	NAD 27 (SURFACE LOCATION)	
LATITUDE = 40°14'36.03" (40.243342) LONGITUDE = 104°57'43.13" (104.961981)	LATITUDE = 40°14'35.86" (40.243294) LONGITUDE = 104°58'39.35" (104.977597)	LATITUDE = 40°14'38.36" (40.243989) LONGITUDE = 104°58'39.14" (104.977539)	

11

2001 Priv. Alum. Cap. #29425, 0.5' Below Ground, Lat: 40.240717° Long: 104.979764°

2004 Priv. Alum. Cap. #9644, 0.3' High, Lat: 40.240739° Long: 104.970261°

2004 Priv. Alum. Cap. #22098 1.2' Below Ground in E-W of Asphalt Road, Lat: 40.233489° Long: 104.960897°

1995 Priv. Alum. Cap. #22098 1.2' Below Ground in E-W of Asphalt Road, Lat: 40.233489° Long: 104.960897°

2005 Priv. Alum. Cap. #22098 0.5' Below Ground, in Monument Box at E of Asphalt Road, Lat: 40.233475° Long: 104.979719°

2004 Priv. Alum. Cap. #27269, 0.5' Below Ground, 7' North of E-W of Asphalt Road, Lat: 40.233483° Long: 104.970308°

S89°34'37"W - 2628.45' (Meas.)

S89°34'38"W - 2628.23' (Meas.)

S89°27'31"W - 2653.24' (Meas.)

S89°27'40"W - 2629.11' (Meas.)

500°06'01"E - 2644.20' (Meas.)

500°04'55"E - 2649.53' (Meas.)

500°04'22"E - 2649.50' (Meas.)

500°36'48"E - 2653.81' (Meas.)

1714'

470'

470'

460'

478'

1456'

1709'

2638.84' (Meas.)

500°37'51"W

N89°24'17"E
4361.46'

N89°08'07"E
2654.07' (Meas.)

N89°33'22"E
2654.12' (Meas.)