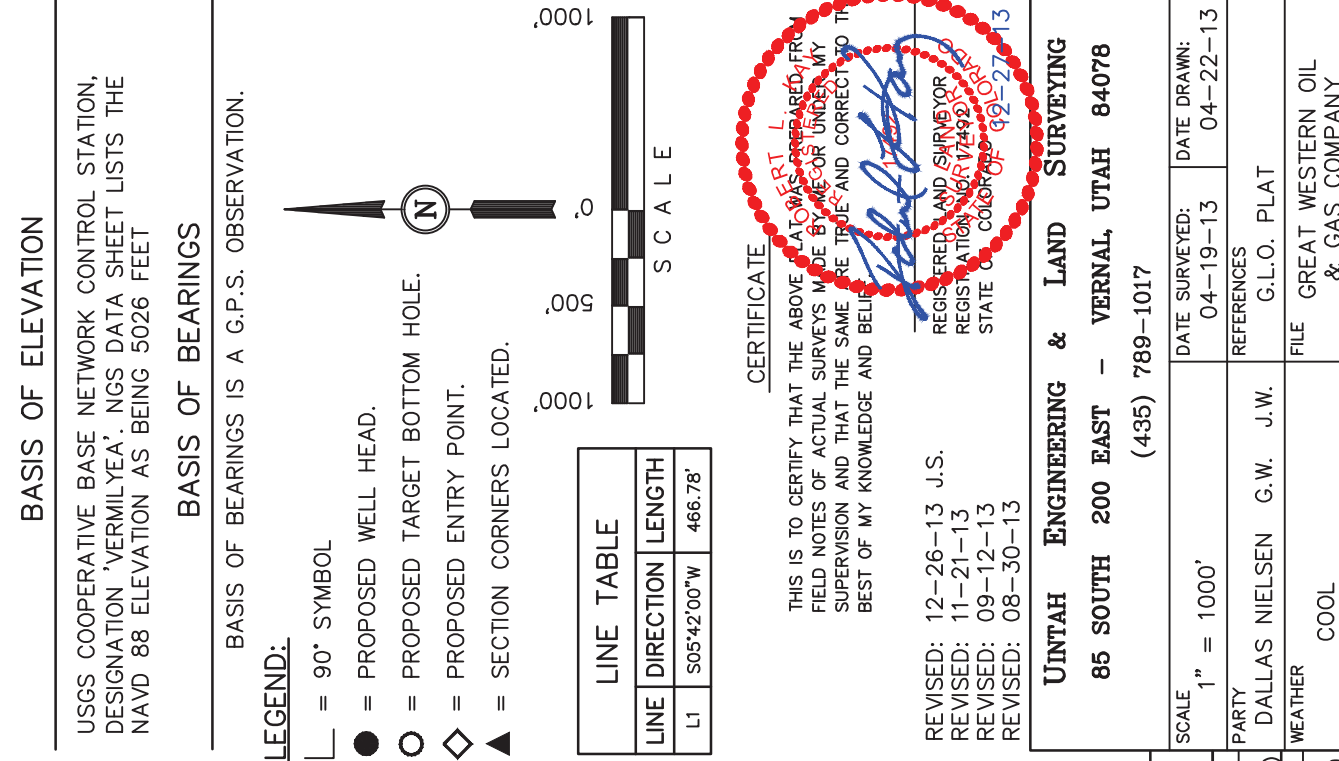


# T3N, R68W, 6th P.M.

**GREAT WESTERN OIL & GAS COMPANY**

Well location, POSTLE LC 11-159HC, located as shown in the SW 1/4 NW 1/4 of Section 11, T3N, R68W, 6th P.M., Weld County, Colorado.



**1996 Priv. Alum. Cap. #4392, 0.3' Below Ground in Monument Box in N-S Asphalt Frontage Road**  
 Lat: 40.247958°  
 Long: 104.979806°

**2012 Priv. Alum. Cap. #28285**  
 0.5' Below Ground,  
 Lat: 40.248022°  
 Long: 104.970303°

**1995 Priv. Alum. Cap. #22098**  
 1.2' Below Ground in E-W Asphalt Road  
 Lat: 40.233489°  
 Long: 104.960897°

**2004 Priv. Alum. Cap. #9644, 0.3' High, Lat: 40.240739°**  
 Long: 104.970261°

**2004 Priv. Alum. Cap. #9644, 0.3' High in Concrete Slab, Lat: 40.240758°**  
 Long: 104.960847°

**2005 Priv. Alum. Cap. #22098**  
 0.5' Below Ground, in Monument Box at E of Asphalt Road,  
 Lat: 40.233475°  
 Long: 104.979719°

**2004 Priv. Alum. Cap. #27269**  
 0.5' Below Ground, 7' North of E-W Asphalt Road,  
 Lat: 40.233483°  
 Long: 104.970308°

**1996 Priv. Alum. Cap. #22098**  
 1.2' Below Ground in E-W Asphalt Road  
 Lat: 40.233489°  
 Long: 104.960897°

**2004 Priv. Alum. Cap. #9644, 0.3' High, Lat: 40.240739°**  
 Long: 104.970261°

**2004 Priv. Alum. Cap. #9644, 0.3' High in Concrete Slab, Lat: 40.240758°**  
 Long: 104.960847°

**1995 Priv. Alum. Cap. #22098**  
 1.2' Below Ground in E-W Asphalt Road  
 Lat: 40.233489°  
 Long: 104.960897°

NAD 83 (TARGET BOTTOM HOLE)	NAD 83 (ENTRY POINT)	NAD 83 (SURFACE LOCATION)
LATITUDE = 4014'32.90" (40.242472)	LATITUDE = 4014'32.74" (40.242428)	LATITUDE = 4014'37.33" (40.243703)
LONGITUDE = 104'57'45.07" (104.962519)	LONGITUDE = 104'58'41.25" (104.978125)	LONGITUDE = 104'58'40.62" (104.977950)
NAD 27 (TARGET BOTTOM HOLE)	NAD 27 (ENTRY POINT)	NAD 27 (SURFACE LOCATION)
LATITUDE = 4014'32.95" (40.242486)	LATITUDE = 4014'32.80" (40.242444)	LATITUDE = 4014'37.39" (40.243719)
LONGITUDE = 104'57'43.15" (104.961986)	LONGITUDE = 104'58'39.33" (104.97592)	LONGITUDE = 104'58'38.70" (104.977417)

**1996 Priv. Alum. Cap. #4392, 0.3' Below Ground in Monument Box in N-S Asphalt Frontage Road**  
 Lat: 40.247958°  
 Long: 104.979806°

**2012 Priv. Alum. Cap. #28285**  
 0.5' Below Ground,  
 Lat: 40.248022°  
 Long: 104.970303°

**1995 Priv. Alum. Cap. #22098**  
 1.2' Below Ground in E-W Asphalt Road  
 Lat: 40.233489°  
 Long: 104.960897°

**2004 Priv. Alum. Cap. #9644, 0.3' High, Lat: 40.240739°**  
 Long: 104.970261°

**2004 Priv. Alum. Cap. #9644, 0.3' High in Concrete Slab, Lat: 40.240758°**  
 Long: 104.960847°

**1995 Priv. Alum. Cap. #22098**  
 1.2' Below Ground in E-W Asphalt Road  
 Lat: 40.233489°  
 Long: 104.960897°

**2004 Priv. Alum. Cap. #27269**  
 0.5' Below Ground, 7' North of E-W Asphalt Road,  
 Lat: 40.233483°  
 Long: 104.970308°

**2004 Priv. Alum. Cap. #22098**  
 0.5' Below Ground, in Monument Box at E of Asphalt Road,  
 Lat: 40.233475°  
 Long: 104.979719°

NAD 83 (TARGET BOTTOM HOLE)	NAD 83 (ENTRY POINT)	NAD 83 (SURFACE LOCATION)
LATITUDE = 4014'32.90" (40.242472)	LATITUDE = 4014'32.74" (40.242428)	LATITUDE = 4014'37.33" (40.243703)
LONGITUDE = 104'57'45.07" (104.962519)	LONGITUDE = 104'58'41.25" (104.978125)	LONGITUDE = 104'58'40.62" (104.977950)
NAD 27 (TARGET BOTTOM HOLE)	NAD 27 (ENTRY POINT)	NAD 27 (SURFACE LOCATION)
LATITUDE = 4014'32.95" (40.242486)	LATITUDE = 4014'32.80" (40.242444)	LATITUDE = 4014'37.39" (40.243719)
LONGITUDE = 104'57'43.15" (104.961986)	LONGITUDE = 104'58'39.33" (104.97592)	LONGITUDE = 104'58'38.70" (104.977417)

PDOP = 1.9

Scale: 1" = 1000'

DATE SURVEYED: 04-19-13  
 DATE DRAWN: 04-22-13

REFERENCES: DALLAS NIELSEN G.W. J.W.  
 G.L.O. PLAT

FILE: GREAT WESTERN OIL & GAS COMPANY

WEATHER: COOL

REVISIONS:  
 REVISED: 12-26-13 J.S.  
 REVISED: 11-21-13  
 REVISED: 09-12-13  
 REVISED: 08-30-13

REGISTERED SURVEYOR  
 REGISTRATION #17492  
 STATE OF COLORADO  
 EXPIRES 02-27-13

CERTIFICATE  
 THIS IS TO CERTIFY THAT THE ABOVE PLAT WAS PREPARED FROM FIELD NOTES OF ACTUAL SURVEYS MADE BY ME OR UNDER MY SUPERVISION AND THAT THE SAME ARE TRUE AND CORRECT TO THE BEST OF MY KNOWLEDGE AND BELIEF.

UNTAH ENGINEERING & LAND SURVEYING  
 85 SOUTH 200 EAST - VERNAL, UTAH 84078  
 (435) 789-1017

LEGEND:  
 □ = 90° SYMBOL  
 ● = PROPOSED WELL HEAD.  
 ○ = PROPOSED TARGET BOTTOM HOLE.  
 ◇ = PROPOSED ENTRY POINT.  
 ▲ = SECTION CORNERS LOCATED.

LINE TABLE  

LINE	DIRECTION	LENGTH
L1	S05°42'00"W	466.78'

USGS COOPERATIVE BASE NETWORK CONTROL STATION, DESIGNATION 'VERMILYEA'. NGS DATA SHEET LISTS THE NAVD 88 ELEVATION AS BEING 5026 FEET

BASIS OF BEARINGS IS A G.P.S. OBSERVATION.

BASIS OF ELEVATION