

Great Western

Well Name: Postle IC 11-239HN

Surface Location: Postle West Pad Sec. 11-T3N-R68W
 North American Datum 1983, US State Plane 1983, Colorado Northern Zone

+N-S	+E-W	Northing	Easting	Latitude	Longitude	Slot
0.0	0.0	1332048.12	3145670.98	40.243694	-104.978164	
Ground Elevation: 4976.9						
RKB - 16.5' WELL @ 4993.4ft (RKB - 16.5')						

WELLBORE TARGET DETAILS

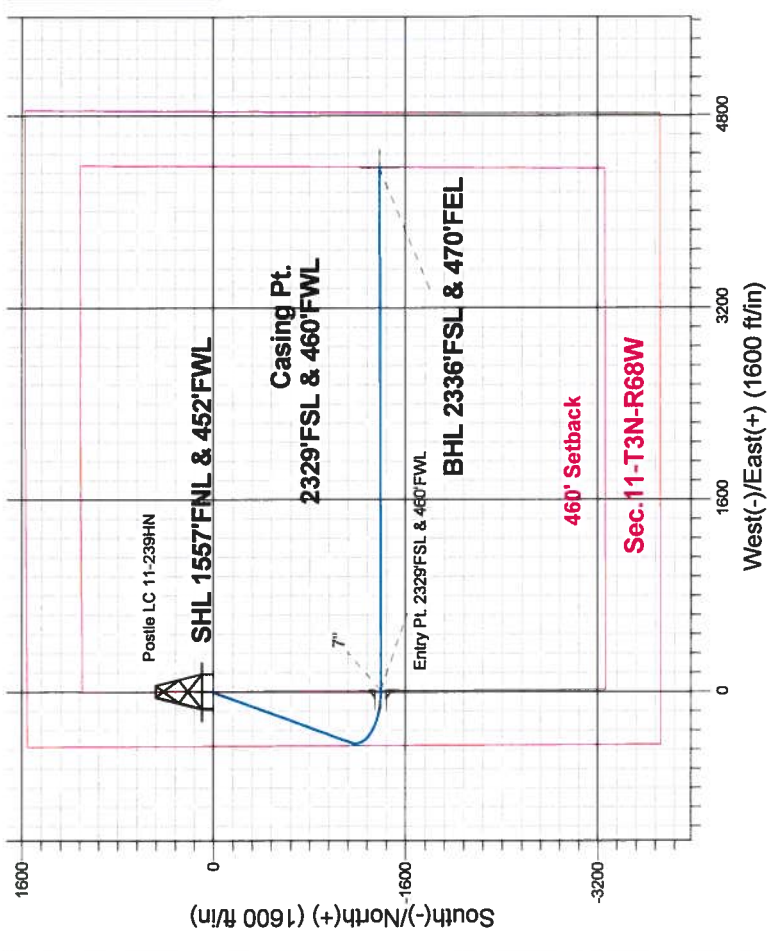
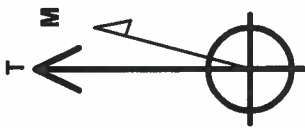
Name	TVD	+N-S	+E-W	Shape
SHL 1557'FNL & 452'FWL	1.0	0.0	0.0	Point
BHL 2336'FSL & 470'FEL	7152.4	-1382.9	4363.0	Point
Entry Pt. 2329'FSL & 460'FWL	7152.4	-1393.4	14.8	Point

Postle West Pad Sec. 11-T3N-R68W
 Postle IC 11-239HN
 Plan #1 (12-10-13)
 10:50, December 12 2013

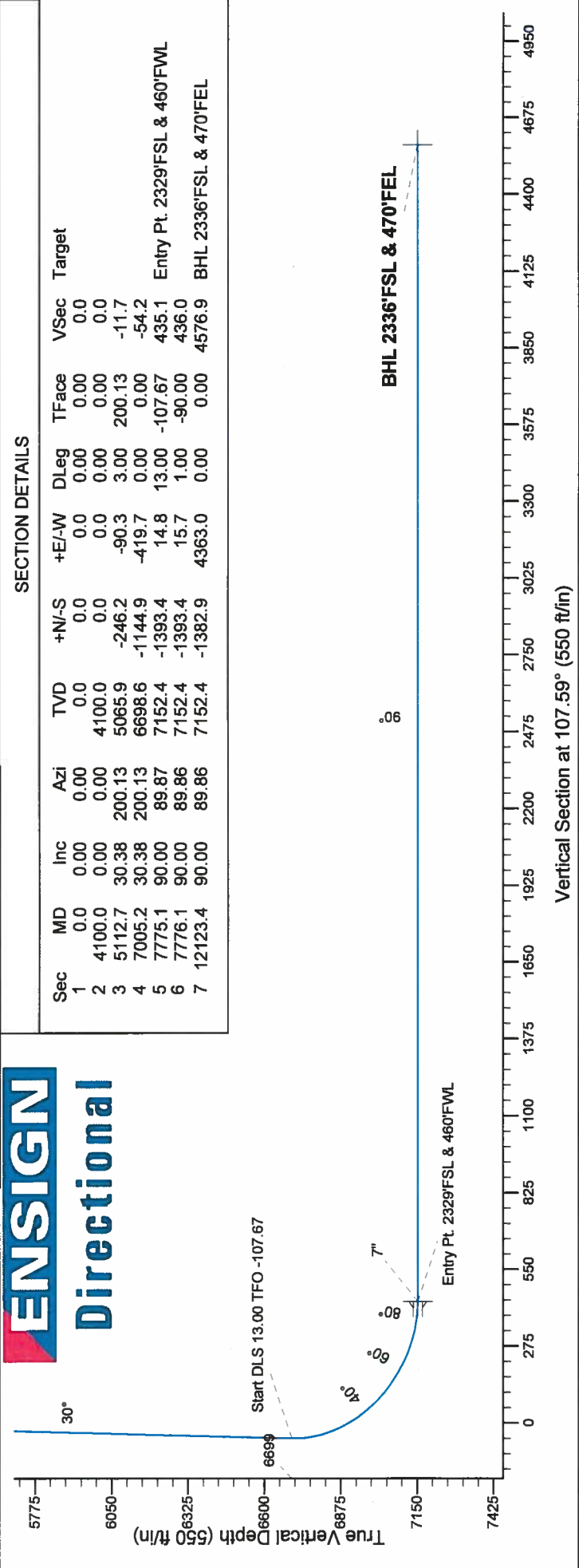
ANNOTATIONS

TVD MD Annotation
 4100.0 4100.0 KOP - Start Build 3.00
 6698.6 7005.2 Start DLS 13.00 TFO -107.67
 7152.4 12123.4 TD at 12123.4

Magnetic Field
 Strength: 52763.3snT
 Dip Angle: 66.80°
 Date: 12/10/2013
 Model: IGRF2010



ENSIGN Directional



SECTION DETAILS

Sec	MD	Inc	Azi	TVD	+N-S	+E-W	DLeg	TFace	VSec	Target
1	0.0	0.00	0.00	0.0	0.0	0.0	0.00	0.00	0.0	
2	4100.0	0.00	0.00	4100.0	0.0	0.0	0.00	0.00	0.0	
3	5112.7	30.38	200.13	5065.9	-246.2	-90.3	3.00	200.13	-11.7	
4	7005.2	30.38	200.13	6698.6	-1144.9	-419.7	0.00	0.00	-54.2	
5	7775.1	90.00	89.87	7152.4	-1393.4	14.8	13.00	-107.67	435.1	Entry Pt. 2329'FSL & 460'FWL
6	7776.1	90.00	89.86	7152.4	-1393.4	15.7	1.00	-90.00	436.0	
7	12123.4	90.00	89.86	7152.4	-1382.9	4363.0	0.00	0.00	4576.9	BHL 2336'FSL & 470'FEL

Vertical Section at 107.59° (550 ft/in)



Directional

Great Western

SEC.11-T3N-R68W

Postle West Pad Sec.11-T3N-R68W

Postle IC 11-239HN

Wellbore #1

Plan: Plan #1 (12-10-13)

Standard Planning Report

12 December, 2013

Database:	Landmark	Local Co-ordinate Reference:	Well Postle LC 11-239HN
Company:	Great Western	TVD Reference:	WELL @ 4993.4ft (RKB - 16.5')
Project:	SEC.11-T3N-R68W	MD Reference:	WELL @ 4993.4ft (RKB - 16.5')
Site:	Postle West Pad Sec.11-T3N-R68W	North Reference:	True
Well:	Postle IC 11-239HN	Survey Calculation Method:	Minimum Curvature
Wellbore:	Wellbore #1		
Design:	Plan #1 (12-10-13)		

Project	SEC.11-T3N-R68W, Weld County, CO		
Map System:	US State Plane 1983	System Datum:	Mean Sea Level
Geo Datum:	North American Datum 1983		Using Well Reference Point
Map Zone:	Colorado Northern Zone		Using geodetic scale factor

Site	Postle West Pad Sec.11-T3N-R68W				
Site Position:		Northing:	1,332,143.74 ft	Latitude:	40.243958
From:	Lat/Long	Easting:	3,145,575.78 ft	Longitude:	-104.978503
Position Uncertainty:	0.0 ft	Slot Radius:	"	Grid Convergence:	0.34 °

Well	Postle IC 11-239HN					
Well Position	+N/-S	-96.2 ft	Northing:	1,332,048.12 ft	Latitude:	40.243694
	+E/-W	94.6 ft	Easting:	3,145,670.98 ft	Longitude:	-104.978164
Position Uncertainty		0.0 ft	Wellhead Elevation:	ft	Ground Level:	4,976.9 ft

Wellbore	Wellbore #1				
Magnetics	Model Name	Sample Date	Declination (°)	Dip Angle (°)	Field Strength (nT)
	IGRF2010	12/10/2013	8.63	66.80	52,763

Design	Plan #1 (12-10-13)			
Audit Notes:				
Version:	Phase:	PROTOTYPE	Tie On Depth:	0.0
Vertical Section:	Depth From (TVD) (ft)	+N/-S (ft)	+E/-W (ft)	Direction (°)
	0.0	0.0	0.0	107.59

Plan Sections										
Measured Depth (ft)	Inclination (°)	Azimuth (°)	Vertical Depth (ft)	+N/-S (ft)	+E/-W (ft)	Dogleg Rate (°/100ft)	Build Rate (°/100ft)	Turn Rate (°/100ft)	TFO (°)	Target
0.0	0.00	0.00	0.0	0.0	0.0	0.00	0.00	0.00	0.00	
4,100.0	0.00	0.00	4,100.0	0.0	0.0	0.00	0.00	0.00	0.00	
5,112.7	30.38	200.13	5,065.9	-246.2	-90.3	3.00	3.00	0.00	200.13	
7,005.2	30.38	200.13	6,698.6	-1,144.9	-419.7	0.00	0.00	0.00	0.00	
7,775.1	90.00	89.87	7,152.4	-1,393.4	14.8	13.00	7.74	-14.32	-107.67	Entry Pt. 2329'FSL
7,776.1	90.00	89.86	7,152.4	-1,393.4	15.7	1.00	0.00	-1.00	-90.00	
12,123.4	90.00	89.86	7,152.4	-1,382.9	4,363.0	0.00	0.00	0.00	0.00	BHL 2336'FSL & 47

Database:	Landmark	Local Co-ordinate Reference:	Well Postle IC 11-239HN
Company:	Great Western	TVD Reference:	WELL @ 4993.4ft (RKB - 16.5')
Project:	SEC.11-T3N-R68W	MD Reference:	WELL @ 4993.4ft (RKB - 16.5')
Site:	Postle West Pad Sec.11-T3N-R68W	North Reference:	True
Well:	Postle IC 11-239HN	Survey Calculation Method:	Minimum Curvature
Wellbore:	Wellbore #1		
Design:	Plan #1 (12-10-13)		

Planned Survey										
Measured Depth (ft)	Inclination (°)	Azimuth (°)	Vertical Depth (ft)	+N/-S (ft)	+E/-W (ft)	Vertical Section (ft)	Dogleg Rate (°/100ft)	Build Rate (°/100ft)	Turn Rate (°/100ft)	
0.0	0.00	0.00	0.0	0.0	0.0	0.0	0.00	0.00	0.00	
1.0	0.00	0.00	1.0	0.0	0.0	0.0	0.00	0.00	0.00	
SHL 1557'FNL & 452'FWL										
100.0	0.00	0.00	100.0	0.0	0.0	0.0	0.00	0.00	0.00	
200.0	0.00	0.00	200.0	0.0	0.0	0.0	0.00	0.00	0.00	
300.0	0.00	0.00	300.0	0.0	0.0	0.0	0.00	0.00	0.00	
400.0	0.00	0.00	400.0	0.0	0.0	0.0	0.00	0.00	0.00	
500.0	0.00	0.00	500.0	0.0	0.0	0.0	0.00	0.00	0.00	
600.0	0.00	0.00	600.0	0.0	0.0	0.0	0.00	0.00	0.00	
700.0	0.00	0.00	700.0	0.0	0.0	0.0	0.00	0.00	0.00	
800.0	0.00	0.00	800.0	0.0	0.0	0.0	0.00	0.00	0.00	
900.0	0.00	0.00	900.0	0.0	0.0	0.0	0.00	0.00	0.00	
1,000.0	0.00	0.00	1,000.0	0.0	0.0	0.0	0.00	0.00	0.00	
1,100.0	0.00	0.00	1,100.0	0.0	0.0	0.0	0.00	0.00	0.00	
1,200.0	0.00	0.00	1,200.0	0.0	0.0	0.0	0.00	0.00	0.00	
1,300.0	0.00	0.00	1,300.0	0.0	0.0	0.0	0.00	0.00	0.00	
1,400.0	0.00	0.00	1,400.0	0.0	0.0	0.0	0.00	0.00	0.00	
1,500.0	0.00	0.00	1,500.0	0.0	0.0	0.0	0.00	0.00	0.00	
1,600.0	0.00	0.00	1,600.0	0.0	0.0	0.0	0.00	0.00	0.00	
1,700.0	0.00	0.00	1,700.0	0.0	0.0	0.0	0.00	0.00	0.00	
1,800.0	0.00	0.00	1,800.0	0.0	0.0	0.0	0.00	0.00	0.00	
1,900.0	0.00	0.00	1,900.0	0.0	0.0	0.0	0.00	0.00	0.00	
2,000.0	0.00	0.00	2,000.0	0.0	0.0	0.0	0.00	0.00	0.00	
2,100.0	0.00	0.00	2,100.0	0.0	0.0	0.0	0.00	0.00	0.00	
2,200.0	0.00	0.00	2,200.0	0.0	0.0	0.0	0.00	0.00	0.00	
2,300.0	0.00	0.00	2,300.0	0.0	0.0	0.0	0.00	0.00	0.00	
2,400.0	0.00	0.00	2,400.0	0.0	0.0	0.0	0.00	0.00	0.00	
2,500.0	0.00	0.00	2,500.0	0.0	0.0	0.0	0.00	0.00	0.00	
2,600.0	0.00	0.00	2,600.0	0.0	0.0	0.0	0.00	0.00	0.00	
2,700.0	0.00	0.00	2,700.0	0.0	0.0	0.0	0.00	0.00	0.00	
2,800.0	0.00	0.00	2,800.0	0.0	0.0	0.0	0.00	0.00	0.00	
2,900.0	0.00	0.00	2,900.0	0.0	0.0	0.0	0.00	0.00	0.00	
3,000.0	0.00	0.00	3,000.0	0.0	0.0	0.0	0.00	0.00	0.00	
3,100.0	0.00	0.00	3,100.0	0.0	0.0	0.0	0.00	0.00	0.00	
3,200.0	0.00	0.00	3,200.0	0.0	0.0	0.0	0.00	0.00	0.00	
3,300.0	0.00	0.00	3,300.0	0.0	0.0	0.0	0.00	0.00	0.00	
3,400.0	0.00	0.00	3,400.0	0.0	0.0	0.0	0.00	0.00	0.00	
3,500.0	0.00	0.00	3,500.0	0.0	0.0	0.0	0.00	0.00	0.00	
3,600.0	0.00	0.00	3,600.0	0.0	0.0	0.0	0.00	0.00	0.00	
3,700.0	0.00	0.00	3,700.0	0.0	0.0	0.0	0.00	0.00	0.00	
3,800.0	0.00	0.00	3,800.0	0.0	0.0	0.0	0.00	0.00	0.00	
3,900.0	0.00	0.00	3,900.0	0.0	0.0	0.0	0.00	0.00	0.00	
4,000.0	0.00	0.00	4,000.0	0.0	0.0	0.0	0.00	0.00	0.00	
4,100.0	0.00	0.00	4,100.0	0.0	0.0	0.0	0.00	0.00	0.00	
KOP - Start Build 3.00										
4,200.0	3.00	200.13	4,200.0	-2.5	-0.9	-0.1	3.00	3.00	0.00	
4,300.0	6.00	200.13	4,299.6	-9.8	-3.6	-0.5	3.00	3.00	0.00	
4,400.0	9.00	200.13	4,398.8	-22.1	-8.1	-1.0	3.00	3.00	0.00	
4,500.0	12.00	200.13	4,497.1	-39.2	-14.4	-1.9	3.00	3.00	0.00	
4,600.0	15.00	200.13	4,594.3	-61.1	-22.4	-2.9	3.00	3.00	0.00	
4,700.0	18.00	200.13	4,690.2	-87.8	-32.2	-4.2	3.00	3.00	0.00	
4,800.0	21.00	200.13	4,784.4	-119.1	-43.7	-5.6	3.00	3.00	0.00	
4,900.0	24.00	200.13	4,876.8	-155.0	-56.8	-7.3	3.00	3.00	0.00	
5,000.0	27.00	200.13	4,967.1	-195.4	-71.6	-9.2	3.00	3.00	0.00	

Database:	Landmark	Local Co-ordinate Reference:	Well Postle IC 11-239HN
Company:	Great Western	TVD Reference:	WELL @ 4993.4ft (RKB - 16.5')
Project:	SEC.11-T3N-R68W	MD Reference:	WELL @ 4993.4ft (RKB - 16.5')
Site:	Postle West Pad Sec.11-T3N-R68W	North Reference:	True
Well:	Postle IC 11-239HN	Survey Calculation Method:	Minimum Curvature
Wellbore:	Wellbore #1		
Design:	Plan #1 (12-10-13)		

Planned Survey

Measured Depth (ft)	Inclination (°)	Azimuth (°)	Vertical Depth (ft)	+N/-S (ft)	+E/-W (ft)	Vertical Section (ft)	Dogleg Rate (°/100ft)	Build Rate (°/100ft)	Turn Rate (°/100ft)
5,100.0	30.00	200.13	5,054.9	-240.2	-88.1	-11.4	3.00	3.00	0.00
5,112.7	30.38	200.13	5,065.9	-246.2	-90.3	-11.7	3.00	3.00	0.00
5,200.0	30.38	200.13	5,141.2	-287.7	-105.5	-13.6	0.00	0.00	0.00
5,300.0	30.38	200.13	5,227.5	-335.2	-122.9	-15.9	0.00	0.00	0.00
5,400.0	30.38	200.13	5,313.8	-382.7	-140.3	-18.1	0.00	0.00	0.00
5,500.0	30.38	200.13	5,400.0	-430.1	-157.7	-20.4	0.00	0.00	0.00
5,600.0	30.38	200.13	5,486.3	-477.6	-175.1	-22.6	0.00	0.00	0.00
5,700.0	30.38	200.13	5,572.6	-525.1	-192.5	-24.8	0.00	0.00	0.00
5,800.0	30.38	200.13	5,658.8	-572.6	-209.9	-27.1	0.00	0.00	0.00
5,900.0	30.38	200.13	5,745.1	-620.1	-227.3	-29.3	0.00	0.00	0.00
6,000.0	30.38	200.13	5,831.4	-667.5	-244.7	-31.6	0.00	0.00	0.00
6,100.0	30.38	200.13	5,917.6	-715.0	-262.1	-33.8	0.00	0.00	0.00
6,200.0	30.38	200.13	6,003.9	-762.5	-279.5	-36.1	0.00	0.00	0.00
6,300.0	30.38	200.13	6,090.2	-810.0	-296.9	-38.3	0.00	0.00	0.00
6,400.0	30.38	200.13	6,176.5	-857.5	-314.3	-40.6	0.00	0.00	0.00
6,500.0	30.38	200.13	6,262.7	-905.0	-331.8	-42.8	0.00	0.00	0.00
6,600.0	30.38	200.13	6,349.0	-952.4	-349.2	-45.1	0.00	0.00	0.00
6,700.0	30.38	200.13	6,435.3	-999.9	-366.6	-47.3	0.00	0.00	0.00
6,800.0	30.38	200.13	6,521.5	-1,047.4	-384.0	-49.6	0.00	0.00	0.00
6,900.0	30.38	200.13	6,607.8	-1,094.9	-401.4	-51.8	0.00	0.00	0.00
7,000.0	30.38	200.13	6,694.1	-1,142.4	-418.8	-54.1	0.00	0.00	0.00
7,005.2	30.38	200.13	6,698.6	-1,144.8	-419.7	-54.2	0.00	0.00	0.00
Start DLS 13.00 TFO -107.67									
7,100.0	28.89	175.24	6,781.3	-1,190.3	-426.1	-46.5	13.00	-1.57	-26.26
7,200.0	32.28	150.40	6,867.7	-1,237.8	-410.8	-17.6	13.00	3.39	-24.84
7,300.0	39.47	131.77	6,948.9	-1,282.4	-373.8	31.2	13.00	7.19	-18.62
7,400.0	48.78	118.67	7,020.8	-1,321.8	-316.8	97.4	13.00	9.31	-13.10
7,500.0	59.19	109.01	7,079.6	-1,354.0	-242.9	177.5	13.00	10.41	-9.66
7,600.0	70.18	101.30	7,122.3	-1,377.3	-155.8	267.6	13.00	10.99	-7.71
7,700.0	81.45	94.61	7,146.8	-1,390.5	-60.0	363.0	13.00	11.27	-6.69
7,775.1	90.00	89.87	7,152.4	-1,393.4	14.8	435.1	13.00	11.38	-6.31
7" - Entry Pt. 2329'FSL & 460'FWL									
7,776.1	90.00	89.86	7,152.4	-1,393.4	15.7	436.0	1.16	0.24	-1.13
7,800.0	90.00	89.86	7,152.4	-1,393.4	39.7	458.8	0.00	0.00	0.00
7,900.0	90.00	89.86	7,152.4	-1,393.1	139.7	554.1	0.00	0.00	0.00
8,000.0	90.00	89.86	7,152.4	-1,392.9	239.7	649.3	0.00	0.00	0.00
8,100.0	90.00	89.86	7,152.4	-1,392.7	339.7	744.6	0.00	0.00	0.00
8,200.0	90.00	89.86	7,152.4	-1,392.4	439.7	839.8	0.00	0.00	0.00
8,300.0	90.00	89.86	7,152.4	-1,392.2	539.7	935.1	0.00	0.00	0.00
8,400.0	90.00	89.86	7,152.4	-1,391.9	639.7	1,030.3	0.00	0.00	0.00
8,500.0	90.00	89.86	7,152.4	-1,391.7	739.7	1,125.6	0.00	0.00	0.00
8,600.0	90.00	89.86	7,152.4	-1,391.4	839.7	1,220.8	0.00	0.00	0.00
8,700.0	90.00	89.86	7,152.4	-1,391.2	939.7	1,316.1	0.00	0.00	0.00
8,800.0	90.00	89.86	7,152.4	-1,391.0	1,039.7	1,411.3	0.00	0.00	0.00
8,900.0	90.00	89.86	7,152.4	-1,390.7	1,139.7	1,506.6	0.00	0.00	0.00
9,000.0	90.00	89.86	7,152.4	-1,390.5	1,239.7	1,601.8	0.00	0.00	0.00
9,100.0	90.00	89.86	7,152.4	-1,390.2	1,339.7	1,697.1	0.00	0.00	0.00
9,200.0	90.00	89.86	7,152.4	-1,390.0	1,439.7	1,792.4	0.00	0.00	0.00
9,300.0	90.00	89.86	7,152.4	-1,389.7	1,539.7	1,887.6	0.00	0.00	0.00
9,400.0	90.00	89.86	7,152.4	-1,389.5	1,639.7	1,982.9	0.00	0.00	0.00
9,500.0	90.00	89.86	7,152.4	-1,389.2	1,739.7	2,078.1	0.00	0.00	0.00
9,600.0	90.00	89.86	7,152.4	-1,389.0	1,839.7	2,173.4	0.00	0.00	0.00
9,700.0	90.00	89.86	7,152.4	-1,388.8	1,939.7	2,268.6	0.00	0.00	0.00
9,800.0	90.00	89.86	7,152.4	-1,388.5	2,039.7	2,363.9	0.00	0.00	0.00

Database:	Landmark	Local Co-ordinate Reference:	Well Postle IC 11-239HN
Company:	Great Western	TVD Reference:	WELL @ 4993.4ft (RKB - 16.5')
Project:	SEC.11-T3N-R68W	MD Reference:	WELL @ 4993.4ft (RKB - 16.5')
Site:	Postle West Pad Sec.11-T3N-R68W	North Reference:	True
Well:	Postle IC 11-239HN	Survey Calculation Method:	Minimum Curvature
Wellbore:	Wellbore #1		
Design:	Plan #1 (12-10-13)		

Planned Survey

Measured Depth (ft)	Inclination (°)	Azimuth (°)	Vertical Depth (ft)	+N/-S (ft)	+E/-W (ft)	Vertical Section (ft)	Dogleg Rate (°/100ft)	Build Rate (°/100ft)	Turn Rate (°/100ft)
9,900.0	90.00	89.86	7,152.4	-1,388.3	2,139.7	2,459.1	0.00	0.00	0.00
10,000.0	90.00	89.86	7,152.4	-1,388.0	2,239.7	2,554.4	0.00	0.00	0.00
10,100.0	90.00	89.86	7,152.4	-1,387.8	2,339.7	2,649.6	0.00	0.00	0.00
10,200.0	90.00	89.86	7,152.4	-1,387.5	2,439.7	2,744.9	0.00	0.00	0.00
10,300.0	90.00	89.86	7,152.4	-1,387.3	2,539.7	2,840.1	0.00	0.00	0.00
10,400.0	90.00	89.86	7,152.4	-1,387.1	2,639.7	2,935.4	0.00	0.00	0.00
10,500.0	90.00	89.86	7,152.4	-1,386.8	2,739.7	3,030.6	0.00	0.00	0.00
10,600.0	90.00	89.86	7,152.4	-1,386.6	2,839.7	3,125.9	0.00	0.00	0.00
10,700.0	90.00	89.86	7,152.4	-1,386.3	2,939.7	3,221.1	0.00	0.00	0.00
10,800.0	90.00	89.86	7,152.4	-1,386.1	3,039.7	3,316.4	0.00	0.00	0.00
10,900.0	90.00	89.86	7,152.4	-1,385.8	3,139.7	3,411.6	0.00	0.00	0.00
11,000.0	90.00	89.86	7,152.4	-1,385.6	3,239.7	3,506.9	0.00	0.00	0.00
11,100.0	90.00	89.86	7,152.4	-1,385.4	3,339.7	3,602.2	0.00	0.00	0.00
11,200.0	90.00	89.86	7,152.4	-1,385.1	3,439.7	3,697.4	0.00	0.00	0.00
11,300.0	90.00	89.86	7,152.4	-1,384.9	3,539.7	3,792.7	0.00	0.00	0.00
11,400.0	90.00	89.86	7,152.4	-1,384.6	3,639.7	3,887.9	0.00	0.00	0.00
11,500.0	90.00	89.86	7,152.4	-1,384.4	3,739.7	3,983.2	0.00	0.00	0.00
11,600.0	90.00	89.86	7,152.4	-1,384.1	3,839.7	4,078.4	0.00	0.00	0.00
11,700.0	90.00	89.86	7,152.4	-1,383.9	3,939.7	4,173.7	0.00	0.00	0.00
11,800.0	90.00	89.86	7,152.4	-1,383.6	4,039.7	4,268.9	0.00	0.00	0.00
11,900.0	90.00	89.86	7,152.4	-1,383.4	4,139.7	4,364.2	0.00	0.00	0.00
12,000.0	90.00	89.86	7,152.4	-1,383.2	4,239.7	4,459.4	0.00	0.00	0.00
12,100.0	90.00	89.86	7,152.4	-1,382.9	4,339.7	4,554.7	0.00	0.00	0.00
12,123.4	90.00	89.86	7,152.4	-1,382.9	4,363.0	4,576.9	0.00	0.00	0.00

BHL 2336'FSL & 470'FEL

Casing Points

Measured Depth (ft)	Vertical Depth (ft)	Name	Casing Diameter (")	Hole Diameter (")
7,775.1	7,152.4	7"	7	7-1/2

Plan Annotations

Measured Depth (ft)	Vertical Depth (ft)	Local Coordinates		Comment
		+N/-S (ft)	+E/-W (ft)	
4,100.0	4,100.0	0.0	0.0	KOP - Start Build 3.00
7,005.2	6,698.6	-1,144.8	-419.7	Start DLS 13.00 TFO -107.67
12,123.4	7,152.4	-1,382.9	4,363.1	TD at 12123.4



Directional

Great Western

SEC.11-T3N-R68W

Postle West Pad Sec.11-T3N-R68W

Postle IC 11-239HN

Wellbore #1

Plan #1 (12-10-13)

Anticollision Report

12 December, 2013

Company:	Great Western	Local Co-ordinate Reference:	Well Postle LC 11-239HN
Project:	SEC.11-T3N-R68W	TVD Reference:	WELL @ 4993.4ft (RKB - 16.5')
Reference Site:	Postle West Pad Sec.11-T3N-R68W	MD Reference:	WELL @ 4993.4ft (RKB - 16.5')
Site Error:	0.0ft	North Reference:	True
Reference Well:	Postle IC 11-239HN	Survey Calculation Method:	Minimum Curvature
Well Error:	0.0ft	Output errors are at	2.00 sigma
Reference Wellbore	Wellbore #1	Database:	Landmark
Reference Design:	Plan #1 (12-10-13)	Offset TVD Reference:	Offset Datum

Reference	Plan #1 (12-10-13)		
Filter type:	NO GLOBAL FILTER: Using user defined selection & filtering criteria		
Interpolation Method:	MD Interval 100.0ft	Error Model:	ISCWSA
Depth Range:	Unlimited	Scan Method:	Closest Approach 3D
Results Limited by:	Maximum center-center distance of 10,000.0ft	Error Surface:	Elliptical Conic
Warning Levels Evaluated at:	2.00 Sigma		

Survey Tool Program	Date	12/11/2013		
From (ft)	To (ft)	Survey (Wellbore)	Tool Name	Description
0.0	12,122.8	Plan #1 (12-10-13) (Wellbore #1)	MWD	MWD - Standard

Site Name	Reference	Offset	Distance		Separation Factor	Warning
	Measured Depth (ft)	Measured Depth (ft)	Between Centres (ft)	Between Ellipses (ft)		
Offset Well - Wellbore - Design						
Postle West Pad Sec.11-T3N-R68W						
Postle IC 11-4HN - Wellbore #1 - Wellbore #1	576.5	579.1	133.7	131.5	61.161	CC
Postle IC 11-4HN - Wellbore #1 - Wellbore #1	800.0	802.1	134.2	131.1	42.667	ES
Postle IC 11-4HN - Wellbore #1 - Wellbore #1	12,123.4	11,695.8	1,876.5	1,619.0	7.286	SF
Postle IC 11-159HC - Wellbore #1 - Plan #1 (12-10-13)	4,100.0	4,100.0	59.8	41.6	3.286	CC, ES
Postle IC 11-159HC - Wellbore #1 - Plan #1 (12-10-13)	4,200.0	4,200.0	60.9	42.3	3.271	SF
Postle IC 11-162HN - Wellbore #1 - Plan #1 (12-10-13)	4,100.0	4,100.0	29.7	11.5	1.630	CC, ES, SF
Postle IC 11-259HC - Wellbore #1 - Plan #1 (12-10-13)	3,800.0	3,800.0	30.2	13.3	1.789	CC, ES
Postle IC 11-259HC - Wellbore #1 - Plan #1 (12-10-13)	12,123.4	12,369.5	353.7	124.9	1.546	SF
Postle IC 11-279HN - Wellbore #1 - Plan #1 (12-10-13)	3,100.0	3,100.0	59.8	46.1	4.359	CC, ES
Postle IC 11-279HN - Wellbore #1 - Plan #1 (12-10-13)	12,123.4	12,273.0	621.1	361.3	2.391	SF

Offset Design Postle West Pad Sec.11-T3N-R68W - Postle IC 11-4HN - Wellbore #1 - Wellbore #1													Offset Site Error:	0.0 ft
Survey Program: 229-MWD													Offset Well Error:	0.0 ft
Reference Measured Depth (ft)	Vertical Depth (ft)	Offset		Semi Major Axis		Highside Toolface (°)	Offset Wellbore Centre		Distance		Minimum Separation (ft)	Separation Factor	Warning	
		Measured Depth (ft)	Vertical Depth (ft)	Reference (ft)	Offset (ft)		+N/-S (ft)	+E/-W (ft)	Between Centres (ft)	Between Ellipses (ft)				
0.0	0.0	2.6	2.6	0.0	0.0	-44.54	96.2	-94.6	134.9	134.9	0.00	N/A		
100.0	100.0	102.7	102.7	0.1	0.1	-44.57	96.1	-94.7	134.9	134.7	0.23	591.448		
200.0	200.0	202.8	202.8	0.3	0.2	-44.66	95.9	-94.7	134.8	134.2	0.57	238.398		
300.0	300.0	302.9	302.9	0.6	0.4	-44.77	95.6	-94.8	134.6	133.6	0.97	138.066		
400.0	400.0	403.2	403.2	0.8	0.6	-44.87	95.2	-94.7	134.3	132.9	1.41	95.057		
500.0	500.0	503.0	503.0	1.0	0.8	-45.09	94.5	-94.8	133.8	132.0	1.85	72.294		
576.5	576.5	579.1	579.1	1.2	1.0	-45.38	93.9	-95.2	133.7	131.5	2.19	61.161	CC	
600.0	600.0	602.5	602.5	1.2	1.1	-45.49	93.7	-95.4	133.7	131.4	2.29	58.414		
700.0	700.0	702.3	702.3	1.5	1.3	-45.98	93.0	-96.3	133.9	131.2	2.72	49.263		
800.0	800.0	802.1	802.1	1.7	1.5	-46.44	92.5	-97.3	134.2	131.1	3.15	42.667	ES	
900.0	900.0	901.6	901.6	1.9	1.7	-46.91	92.0	-98.4	134.7	131.2	3.58	37.670		
1,000.0	1,000.0	1,001.2	1,001.1	2.1	1.9	-47.61	91.5	-100.2	135.7	131.7	4.02	33.768		
1,100.0	1,100.0	1,100.2	1,100.1	2.4	2.1	-48.46	90.9	-102.6	137.1	132.6	4.46	30.754		
1,200.0	1,200.0	1,199.9	1,199.8	2.6	2.3	-49.17	90.9	-105.2	139.1	134.2	4.89	28.452		
1,300.0	1,300.0	1,300.3	1,300.1	2.8	2.5	-49.65	91.3	-107.4	141.0	135.7	5.32	26.530		
1,400.0	1,400.0	1,400.2	1,400.1	3.0	2.7	-50.01	91.7	-109.3	142.7	137.0	5.74	24.855		
1,500.0	1,500.0	1,500.3	1,500.1	3.3	2.9	-50.12	92.6	-110.9	144.5	138.3	6.17	23.408		

CC - Min centre to center distance or convergent point, SF - min separation factor, ES - min ellipse separation

Company:	Great Western	Local Co-ordinate Reference:	Well Postle LC 11-239HN
Project:	SEC.11-T3N-R68W	TVD Reference:	WELL @ 4993.4ft (RKB - 16.5')
Reference Site:	Postle West Pad Sec.11-T3N-R68W	MD Reference:	WELL @ 4993.4ft (RKB - 16.5')
Site Error:	0.0ft	North Reference:	True
Reference Well:	Postle IC 11-239HN	Survey Calculation Method:	Minimum Curvature
Well Error:	0.0ft	Output errors are at	2.00 sigma
Reference Wellbore	Wellbore #1	Database:	Landmark
Reference Design:	Plan #1 (12-10-13)	Offset TVD Reference:	Offset Datum

Offset Design Postle West Pad Sec.11-T3N-R68W - Postle IC 11-4HN - Wellbore #1 - Wellbore #1													Offset Site Error:	0.0ft
Survey Program: 229-MWD													Offset Well Error:	0.0ft
Reference		Offset		Semi Major Axis			Distance						Warning	
Measured Depth (ft)	Vertical Depth (ft)	Measured Depth (ft)	Vertical Depth (ft)	Reference (ft)	Offset (ft)	Highside Tooface (°)	Offset Wellbore Centre +N/-S (ft)	+E/-W (ft)	Between Centres (ft)	Between Ellipses (ft)	Minimum Separation (ft)	Separation Factor		
1,600.0	1,600.0	1,600.7	1,600.6	3.5	3.1	-49.84	94.2	-111.6	146.1	139.5	6.60	22.117		
1,700.0	1,700.0	1,701.7	1,701.5	3.7	3.3	-49.73	95.1	-112.3	147.2	140.1	7.04	20.908		
1,800.0	1,800.0	1,800.8	1,800.6	3.9	3.5	-49.70	95.8	-113.0	148.2	140.7	7.47	19.830		
1,900.0	1,900.0	1,900.8	1,900.6	4.2	3.8	-49.74	96.6	-114.1	149.5	141.6	7.91	18.911		
2,000.0	2,000.0	2,001.8	2,001.6	4.4	4.0	-49.75	97.3	-114.9	150.6	142.2	8.34	18.043		
2,100.0	2,100.0	2,101.2	2,100.9	4.6	4.2	-49.58	98.2	-115.3	151.4	142.7	8.77	17.260		
2,200.0	2,200.0	2,200.8	2,200.6	4.8	4.4	-49.46	99.2	-116.0	152.7	143.5	9.21	16.582		
2,300.0	2,300.0	2,301.2	2,301.0	5.1	4.6	-49.47	100.0	-117.0	153.9	144.2	9.65	15.952		
2,400.0	2,400.0	2,401.3	2,401.0	5.3	4.8	-49.92	99.8	-118.6	155.0	144.9	10.08	15.369		
2,500.0	2,500.0	2,502.0	2,501.8	5.5	5.0	-50.48	99.1	-120.1	155.7	145.2	10.52	14.807		
2,600.0	2,600.0	2,602.6	2,602.3	5.7	5.2	-50.83	98.6	-121.0	156.1	145.1	10.95	14.253		
2,700.0	2,700.0	2,702.9	2,702.6	6.0	5.4	-51.10	98.1	-121.5	156.2	144.8	11.39	13.716		
2,800.0	2,800.0	2,803.0	2,802.7	6.2	5.7	-51.42	97.3	-122.0	156.1	144.3	11.82	13.203		
2,862.6	2,862.6	2,865.5	2,865.2	6.3	5.8	-51.65	96.8	-122.4	156.0	144.0	12.09	12.902		
2,900.0	2,900.0	2,902.8	2,902.5	6.4	5.9	-51.81	96.5	-122.7	156.1	143.8	12.26	12.731		
3,000.0	3,000.0	3,002.0	3,001.7	6.6	6.1	-52.31	95.6	-123.7	156.3	143.6	12.69	12.313		
3,100.0	3,100.0	3,101.1	3,100.8	6.9	6.3	-52.83	95.0	-125.3	157.2	144.1	13.13	11.978		
3,200.0	3,200.0	3,201.1	3,200.7	7.1	6.5	-53.41	94.5	-127.2	158.5	144.9	13.56	11.683		
3,300.0	3,300.0	3,299.9	3,299.6	7.3	6.7	-54.17	93.6	-129.6	159.9	145.9	14.00	11.419		
3,400.0	3,400.0	3,399.2	3,398.8	7.5	6.9	-54.97	93.0	-132.7	162.1	147.7	14.44	11.229		
3,500.0	3,500.0	3,496.6	3,496.1	7.8	7.1	-55.85	92.6	-136.5	165.1	150.2	14.87	11.101		
3,600.0	3,600.0	3,595.4	3,594.8	8.0	7.4	-56.74	92.9	-141.6	169.5	154.2	15.30	11.077		
3,700.0	3,700.0	3,694.6	3,693.8	8.2	7.6	-57.56	93.4	-146.9	174.3	158.6	15.74	11.076		
3,800.0	3,800.0	3,792.7	3,791.7	8.4	7.8	-58.47	93.9	-153.0	179.8	163.6	16.17	11.116		
3,900.0	3,900.0	3,890.9	3,889.7	8.7	8.0	-59.48	94.4	-160.1	186.3	169.7	16.61	11.215		
4,000.0	4,000.0	3,990.4	3,988.8	8.9	8.3	-60.50	95.0	-167.9	193.4	176.3	17.05	11.342		
4,100.0	4,100.0	4,092.2	4,090.4	9.1	8.5	-61.45	95.4	-175.4	200.0	182.6	17.48	11.441		
4,200.0	4,200.0	4,191.8	4,189.7	9.3	8.7	-62.01	95.4	-182.3	206.5	188.6	17.91	11.529		
4,300.0	4,299.6	4,289.9	4,287.5	9.5	8.9	-62.82	95.1	-189.8	214.2	195.9	18.30	11.707		
4,400.0	4,398.8	4,388.1	4,385.4	9.6	9.2	-63.73	94.8	-198.0	223.5	204.9	18.69	11.959		
4,500.0	4,497.1	4,486.4	4,483.4	9.8	9.4	-64.61	94.6	-206.4	234.5	215.5	19.09	12.286		
4,600.0	4,594.3	4,582.2	4,578.8	10.0	9.6	-65.13	94.4	-215.0	248.2	228.7	19.49	12.734		
4,700.0	4,690.2	4,677.5	4,673.7	10.3	9.9	-65.16	94.5	-224.1	265.4	245.5	19.90	13.338		
4,800.0	4,784.4	4,772.2	4,767.9	10.5	10.1	-65.47	94.9	-233.2	286.5	266.2	20.29	14.120		
4,900.0	4,876.8	4,865.7	4,861.0	10.9	10.3	-65.80	95.3	-242.0	311.9	291.2	20.66	15.097		
5,000.0	4,967.1	4,956.8	4,951.7	11.3	10.5	-66.95	95.7	-250.5	342.1	321.1	21.00	16.292		
5,100.0	5,054.9	5,046.6	5,041.1	11.8	10.7	-67.87	96.1	-258.5	377.4	356.1	21.31	17.713		
5,200.0	5,141.2	5,133.6	5,127.8	12.3	11.0	-69.07	96.6	-266.0	416.8	395.1	21.71	19.199		
5,300.0	5,227.5	5,221.0	5,214.9	12.9	11.2	-70.75	97.1	-273.4	458.0	435.8	22.14	20.685		
5,400.0	5,313.8	5,309.1	5,302.7	13.6	11.4	-73.92	97.7	-280.4	500.5	477.9	22.59	22.158		
5,500.0	5,400.0	5,396.1	5,389.5	14.3	11.6	-77.64	98.2	-286.8	544.1	521.0	23.05	23.608		
5,600.0	5,486.3	5,485.8	5,478.9	15.0	11.8	-82.10	98.8	-292.9	588.4	564.9	23.51	25.029		
5,700.0	5,572.6	5,573.8	5,566.8	15.8	12.0	-87.26	99.1	-298.0	633.1	609.1	23.98	26.402		
5,800.0	5,658.8	5,659.1	5,652.0	16.6	12.2	-93.09	99.5	-303.1	678.6	654.1	24.46	27.742		
5,900.0	5,745.1	5,743.3	5,736.0	17.4	12.4	-99.68	100.1	-308.0	724.8	699.8	24.95	29.052		
6,000.0	5,831.4	5,823.9	5,816.5	18.2	12.6	-107.11	101.3	-311.9	772.0	746.5	25.43	30.357		
6,100.0	5,917.6	5,906.7	5,899.2	19.0	12.7	-115.52	103.1	-314.8	820.1	794.2	25.90	31.660		
6,200.0	6,003.9	5,973.2	5,965.7	19.9	12.9	-124.80	105.4	-316.3	869.6	843.2	26.36	32.984		
6,300.0	6,090.2	6,048.1	6,040.5	20.7	13.0	-135.77	109.5	-317.4	921.2	894.4	26.83	34.339		
6,400.0	6,176.5	6,102.0	6,094.3	21.6	13.1	-148.51	112.7	-318.6	973.9	946.6	27.29	35.681		
6,500.0	6,262.7	6,149.0	6,141.0	22.5	13.2	-163.08	117.2	-320.0	1,029.8	1,002.0	27.77	37.079		
6,600.0	6,349.0	6,185.0	6,176.5	23.4	13.3	-179.46	122.5	-321.8	1,089.4	1,061.2	28.26	38.550		

CC - Min centre to center distance or convergent point, SF - min separation factor, ES - min ellipse separation

Company:	Great Western	Local Co-ordinate Reference:	Well Postle IC 11-239HN
Project:	SEC.11-T3N-R68W	TVD Reference:	WELL @ 4993.4ft (RKB - 16.5')
Reference Site:	Postle West Pad Sec.11-T3N-R68W	MD Reference:	WELL @ 4993.4ft (RKB - 16.5')
Site Error:	0.0ft	North Reference:	True
Reference Well:	Postle IC 11-239HN	Survey Calculation Method:	Minimum Curvature
Well Error:	0.0ft	Output errors are at	2.00 sigma
Reference Wellbore	Wellbore #1	Database:	Landmark
Reference Design:	Plan #1 (12-10-13)	Offset TVD Reference:	Offset Datum

Offset Design													Postle West Pad Sec.11-T3N-R68W - Postle IC 11-4HN - Wellbore #1 - Wellbore #1	Offset Site Error:	0.0 ft
Survey Program: 229-MWD														Offset Well Error:	0.0 ft
Reference		Offset		Semi Major Axis			Distance						Warning		
Measured Depth (ft)	Vertical Depth (ft)	Measured Depth (ft)	Vertical Depth (ft)	Reference (ft)	Offset (ft)	Highside Toolface (°)	Offset Wellbore Centre +N/-S (ft)	+E/-W (ft)	Between Centres (ft)	Between Ellipses (ft)	Minimum Separation (ft)	Separation Factor			
6,700.0	6,435.3	6,245.0	6,235.6	24.3	13.5	157.03	132.5	-324.9	1,151.1	1,122.4	28.76	40.025			
6,800.0	6,521.5	6,293.0	6,282.8	25.2	13.6	157.44	141.3	-327.5	1,214.3	1,185.0	29.26	41.507			
6,900.0	6,607.8	6,324.3	6,313.2	26.1	13.7	157.67	148.2	-329.6	1,280.1	1,250.4	29.75	43.027			
7,000.0	6,694.1	6,355.6	6,343.4	27.0	13.8	157.88	156.1	-332.0	1,348.4	1,318.2	30.25	44.572			
7,100.0	6,781.3	6,388.0	6,374.4	27.8	13.8	-168.21	165.2	-334.0	1,419.0	1,389.8	29.22	48.570			
7,200.0	6,867.7	6,411.2	6,396.5	28.4	13.9	-134.59	172.3	-334.9	1,489.6	1,459.7	29.91	49.796			
7,300.0	6,948.9	6,435.0	6,418.9	28.9	14.0	-109.33	180.2	-335.4	1,557.1	1,525.8	31.25	49.831			
7,400.0	7,020.8	6,454.7	6,437.4	29.2	14.0	-92.05	187.2	-335.5	1,618.9	1,587.1	31.78	50.940			
7,500.0	7,079.6	6,484.0	6,464.5	29.5	14.1	-81.03	198.2	-335.3	1,673.1	1,641.7	31.35	53.366			
7,600.0	7,122.3	6,484.0	6,464.5	29.6	14.1	-73.16	198.2	-335.3	1,717.7	1,687.3	30.37	56.566			
7,700.0	7,146.8	6,505.4	6,484.2	29.6	14.2	-69.15	206.5	-335.0	1,751.7	1,721.8	29.93	58.535			
7,800.0	7,152.4	6,513.7	6,491.9	29.6	14.2	-67.54	209.7	-334.9	1,774.8	1,744.4	30.41	58.357			
7,900.0	7,152.4	6,517.0	6,494.9	29.7	14.2	-67.65	211.0	-334.8	1,798.3	1,766.7	31.61	56.895			
8,000.0	7,152.4	6,520.7	6,498.3	29.9	14.2	-67.77	212.4	-334.7	1,827.0	1,794.0	33.09	55.221			
8,100.0	7,152.4	6,524.8	6,502.1	30.4	14.2	-67.91	214.0	-334.6	1,860.7	1,825.9	34.79	53.478			
8,200.0	7,152.4	7,625.2	7,136.9	31.3	20.4	-89.44	470.5	263.5	1,871.3	1,825.3	46.04	40.642			
8,300.0	7,152.4	7,878.8	7,129.1	32.5	25.5	-89.21	485.2	516.4	1,877.7	1,824.5	53.25	35.265			
8,400.0	7,152.4	7,949.2	7,127.6	34.1	27.0	-89.16	486.7	586.8	1,879.6	1,822.6	57.03	32.955			
8,500.0	7,152.4	8,123.1	7,126.7	36.0	31.1	-89.14	487.3	760.6	1,879.3	1,815.9	63.45	29.618			
8,600.0	7,152.4	8,284.2	7,129.2	38.0	35.0	-89.21	482.8	921.6	1,876.2	1,806.3	69.83	26.868			
8,700.0	7,152.4	8,344.0	7,129.0	40.2	36.5	-89.20	480.7	981.4	1,872.6	1,798.8	73.77	25.383			
8,800.0	7,152.4	8,415.1	7,128.1	42.5	38.3	-89.18	479.9	1,052.5	1,871.1	1,793.1	78.06	23.969			
8,900.0	7,152.4	8,554.5	7,127.9	44.9	41.9	-89.17	477.3	1,191.9	1,868.9	1,784.7	84.20	22.196			
9,000.0	7,152.4	8,638.1	7,127.5	47.3	44.0	-89.16	475.1	1,275.4	1,866.1	1,777.2	88.94	20.981			
9,100.0	7,152.4	8,699.8	7,126.2	49.8	45.6	-89.12	474.6	1,337.1	1,865.0	1,771.9	93.14	20.023			
9,105.2	7,152.4	8,703.0	7,126.2	49.9	45.7	-89.11	474.6	1,340.3	1,865.0	1,771.6	93.36	19.976			
9,200.0	7,152.4	8,780.3	7,124.3	52.3	47.8	-89.06	475.3	1,417.6	1,865.7	1,767.8	97.87	19.063			
9,300.0	7,152.4	8,908.6	7,122.6	54.8	51.2	-89.01	475.4	1,545.9	1,865.4	1,761.5	103.92	17.951			
9,317.2	7,152.4	8,913.0	7,122.6	55.3	51.3	-89.00	475.4	1,550.3	1,865.4	1,760.9	104.49	17.852			
9,400.0	7,152.4	8,961.0	7,122.5	57.4	52.6	-89.00	475.9	1,598.3	1,866.1	1,758.2	107.96	17.285			
9,500.0	7,152.4	9,066.7	7,123.3	60.0	55.4	-89.03	478.0	1,703.9	1,867.9	1,754.4	113.46	16.463			
9,600.0	7,152.4	9,189.9	7,123.2	62.6	58.7	-89.02	479.6	1,827.1	1,868.9	1,749.5	119.45	15.646			
9,700.0	7,152.4	9,332.9	7,124.4	65.2	62.6	-89.06	478.5	1,970.1	1,867.7	1,741.7	126.02	14.821			
9,800.0	7,152.4	9,431.0	7,123.7	67.9	65.2	-89.04	477.1	2,068.2	1,866.1	1,734.7	131.38	14.204			
9,900.0	7,152.4	9,557.3	7,123.3	70.5	68.7	-89.02	473.7	2,194.4	1,863.1	1,725.6	137.54	13.546			
10,000.0	7,152.4	9,638.6	7,120.5	73.2	70.9	-88.94	471.6	2,275.7	1,860.3	1,717.9	142.47	13.058			
10,100.0	7,152.4	9,723.0	7,119.3	75.8	73.2	-88.90	470.1	2,360.0	1,858.3	1,710.8	147.49	12.599			
10,156.5	7,152.4	9,754.6	7,119.4	77.4	74.1	-88.90	469.9	2,391.7	1,857.9	1,708.0	149.90	12.395			
10,200.0	7,152.4	9,788.7	7,119.3	78.5	75.0	-88.90	470.2	2,425.8	1,858.1	1,706.1	152.02	12.223			
10,300.0	7,152.4	9,912.0	7,117.8	81.2	78.4	-88.85	470.3	2,549.0	1,858.0	1,699.9	158.13	11.750			
10,349.6	7,152.4	9,947.8	7,117.4	82.6	79.3	-88.84	470.2	2,584.8	1,857.8	1,697.3	160.47	11.578			
10,400.0	7,152.4	9,989.1	7,117.5	83.9	80.5	-88.84	470.5	2,626.2	1,858.0	1,695.0	162.98	11.400			
10,500.0	7,152.4	10,088.6	7,119.2	86.6	83.2	-88.89	471.2	2,725.6	1,858.4	1,689.9	168.46	11.031			
10,600.0	7,152.4	10,160.7	7,119.4	89.3	85.2	-88.90	472.1	2,797.7	1,859.5	1,686.3	173.19	10.737			
10,700.0	7,152.4	10,218.9	7,119.2	92.0	86.8	-88.90	474.2	2,855.9	1,862.7	1,685.2	177.53	10.492			
10,800.0	7,152.4	10,348.8	7,118.9	94.8	90.4	-88.89	479.8	2,985.7	1,867.0	1,683.2	183.85	10.155			
10,900.0	7,152.4	10,435.0	7,118.7	97.5	92.7	-88.89	482.3	3,071.8	1,869.8	1,680.8	188.98	9.894			
11,000.0	7,152.4	10,620.7	7,118.0	100.2	97.9	-88.87	484.8	3,257.5	1,870.9	1,674.0	196.87	9.503			
11,100.0	7,152.4	10,723.3	7,117.8	103.0	100.7	-88.86	484.1	3,360.1	1,869.9	1,667.4	202.47	9.236			
11,200.0	7,152.4	10,814.0	7,118.1	105.7	103.2	-88.87	483.1	3,450.7	1,868.6	1,660.9	207.74	8.995			
11,300.0	7,152.4	10,910.0	7,118.9	108.4	105.9	-88.89	482.5	3,546.7	1,867.7	1,654.5	213.17	8.761			
11,375.1	7,152.4	10,973.5	7,119.9	110.5	107.6	-88.92	482.4	3,610.2	1,867.4	1,650.4	217.01	8.605			

CC - Min centre to center distance or convergent point, SF - min separation factor, ES - min ellipse separation

Company:	Great Western	Local Co-ordinate Reference:	Well Postle IC 11-239HN
Project:	SEC.11-T3N-R68W	TVD Reference:	WELL @ 4993.4ft (RKB - 16.5')
Reference Site:	Postle West Pad Sec.11-T3N-R68W	MD Reference:	WELL @ 4993.4ft (RKB - 16.5')
Site Error:	0.0ft	North Reference:	True
Reference Well:	Postle IC 11-239HN	Survey Calculation Method:	Minimum Curvature
Well Error:	0.0ft	Output errors are at	2.00 sigma
Reference Wellbore	Wellbore #1	Database:	Landmark
Reference Design:	Plan #1 (12-10-13)	Offset TVD Reference:	Offset Datum

Offset Design													Postle West Pad Sec.11-T3N-R68W - Postle IC 11-4HN - Wellbore #1 - Wellbore #1	Offset Site Error:	0.0 ft
Survey Program: 229-MWD														Offset Well Error:	0.0 ft
Reference		Offset		Semi Major Axis			Distance						Warning		
Measured Depth (ft)	Vertical Depth (ft)	Measured Depth (ft)	Vertical Depth (ft)	Reference (ft)	Offset (ft)	Highside Toolface (°)	Offset Wellbore Centre +N/-S (ft)	+E/-W (ft)	Between Centres (ft)	Between Ellipses (ft)	Minimum Separation (ft)	Separation Factor			
11,400.0	7,152.4	10,992.0	7,120.1	111.2	108.2	-88.93	482.5	3,628.7	1,867.5	1,649.2	218.22	8.558			
11,500.0	7,152.4	11,070.5	7,120.9	113.9	110.3	-88.96	483.5	3,707.2	1,868.5	1,645.3	223.16	8.373			
11,600.0	7,152.4	11,169.3	7,119.2	116.7	113.1	-88.90	485.0	3,805.9	1,869.8	1,641.2	228.66	8.177			
11,700.0	7,152.4	11,261.0	7,117.1	119.4	115.6	-88.84	487.2	3,897.7	1,871.9	1,637.9	233.97	8.001			
11,800.0	7,152.4	11,379.0	7,114.5	122.2	118.9	-88.76	488.7	4,015.6	1,872.9	1,632.9	240.01	7.804			
11,900.0	7,152.4	11,480.2	7,112.8	124.9	121.7	-88.71	490.0	4,116.7	1,874.0	1,628.4	245.58	7.631			
12,000.0	7,152.4	11,587.8	7,114.2	127.7	124.7	-88.75	491.7	4,224.3	1,875.4	1,624.0	251.35	7.461			
12,100.0	7,152.4	11,674.9	7,115.2	130.5	127.1	-88.79	492.7	4,311.4	1,876.2	1,619.7	256.55	7.313			
12,123.4	7,152.4	11,695.8	7,115.2	130.9	127.7	-88.78	493.0	4,332.3	1,876.5	1,619.0	257.54	7.286 SF			

Company:	Great Western	Local Co-ordinate Reference:	Well Postle LC 11-239HN
Project:	SEC.11-T3N-R68W	TVD Reference:	WELL @ 4993.4ft (RKB - 16.5')
Reference Site:	Postle West Pad Sec.11-T3N-R68W	MD Reference:	WELL @ 4993.4ft (RKB - 16.5')
Site Error:	0.0ft	North Reference:	True
Reference Well:	Postle LC 11-239HN	Survey Calculation Method:	Minimum Curvature
Well Error:	0.0ft	Output errors are at	2.00 sigma
Reference Wellbore	Wellbore #1	Database:	Landmark
Reference Design:	Plan #1 (12-10-13)	Offset TVD Reference:	Offset Datum

Offset Design Postle West Pad Sec.11-T3N-R68W - Postle LC 11-159HC - Wellbore #1 - Plan #1 (12-10-13)													Offset Site Error:	0.0 ft
Survey Program: 0-MWD													Offset Well Error:	0.0 ft
Reference		Offset		Semi Major Axis			Distance						Warning	
Measured Depth (ft)	Vertical Depth (ft)	Measured Depth (ft)	Vertical Depth (ft)	Reference (ft)	Offset (ft)	Highside Toolface (°)	Offset Wellbore Centre +N/-S (ft)	+E/-W (ft)	Between Centres (ft)	Between Ellipses (ft)	Minimum Separation (ft)	Separation Factor		
0.0	0.0	0.0	0.0	0.0	0.0	86.86	3.3	59.7	59.8					
100.0	100.0	100.0	100.0	0.1	0.1	86.86	3.3	59.7	59.8	59.6	0.22	266.193		
200.0	200.0	200.0	200.0	0.3	0.3	86.86	3.3	59.7	59.8	59.2	0.67	88.731		
300.0	300.0	300.0	300.0	0.6	0.6	86.86	3.3	59.7	59.8	58.7	1.12	53.239		
400.0	400.0	400.0	400.0	0.8	0.8	86.86	3.3	59.7	59.8	58.3	1.57	38.028		
500.0	500.0	500.0	500.0	1.0	1.0	86.86	3.3	59.7	59.8	57.8	2.02	29.577		
600.0	600.0	600.0	600.0	1.2	1.2	86.86	3.3	59.7	59.8	57.4	2.47	24.199		
700.0	700.0	700.0	700.0	1.5	1.5	86.86	3.3	59.7	59.8	56.9	2.92	20.476		
800.0	800.0	800.0	800.0	1.7	1.7	86.86	3.3	59.7	59.8	56.5	3.37	17.746		
900.0	900.0	900.0	900.0	1.9	1.9	86.86	3.3	59.7	59.8	56.0	3.82	15.658		
1,000.0	1,000.0	1,000.0	1,000.0	2.1	2.1	86.86	3.3	59.7	59.8	55.6	4.27	14.010		
1,100.0	1,100.0	1,100.0	1,100.0	2.4	2.4	86.86	3.3	59.7	59.8	55.1	4.72	12.676		
1,200.0	1,200.0	1,200.0	1,200.0	2.6	2.6	86.86	3.3	59.7	59.8	54.7	5.17	11.574		
1,300.0	1,300.0	1,300.0	1,300.0	2.8	2.8	86.86	3.3	59.7	59.8	54.2	5.62	10.648		
1,400.0	1,400.0	1,400.0	1,400.0	3.0	3.0	86.86	3.3	59.7	59.8	53.8	6.07	9.859		
1,500.0	1,500.0	1,500.0	1,500.0	3.3	3.3	86.86	3.3	59.7	59.8	53.3	6.52	9.179		
1,600.0	1,600.0	1,600.0	1,600.0	3.5	3.5	86.86	3.3	59.7	59.8	52.9	6.97	8.587		
1,700.0	1,700.0	1,700.0	1,700.0	3.7	3.7	86.86	3.3	59.7	59.8	52.4	7.42	8.066		
1,800.0	1,800.0	1,800.0	1,800.0	3.9	3.9	86.86	3.3	59.7	59.8	52.0	7.87	7.606		
1,900.0	1,900.0	1,900.0	1,900.0	4.2	4.2	86.86	3.3	59.7	59.8	51.5	8.32	7.194		
2,000.0	2,000.0	2,000.0	2,000.0	4.4	4.4	86.86	3.3	59.7	59.8	51.1	8.77	6.825		
2,100.0	2,100.0	2,100.0	2,100.0	4.6	4.6	86.86	3.3	59.7	59.8	50.6	9.22	6.493		
2,200.0	2,200.0	2,200.0	2,200.0	4.8	4.8	86.86	3.3	59.7	59.8	50.2	9.66	6.191		
2,300.0	2,300.0	2,300.0	2,300.0	5.1	5.1	86.86	3.3	59.7	59.8	49.7	10.11	5.915		
2,400.0	2,400.0	2,400.0	2,400.0	5.3	5.3	86.86	3.3	59.7	59.8	49.3	10.56	5.664		
2,500.0	2,500.0	2,500.0	2,500.0	5.5	5.5	86.86	3.3	59.7	59.8	48.8	11.01	5.433		
2,600.0	2,600.0	2,600.0	2,600.0	5.7	5.7	86.86	3.3	59.7	59.8	48.4	11.46	5.219		
2,700.0	2,700.0	2,700.0	2,700.0	6.0	6.0	86.86	3.3	59.7	59.8	47.9	11.91	5.023		
2,800.0	2,800.0	2,800.0	2,800.0	6.2	6.2	86.86	3.3	59.7	59.8	47.5	12.36	4.840		
2,900.0	2,900.0	2,900.0	2,900.0	6.4	6.4	86.86	3.3	59.7	59.8	47.0	12.81	4.670		
3,000.0	3,000.0	3,000.0	3,000.0	6.6	6.6	86.86	3.3	59.7	59.8	46.6	13.26	4.512		
3,100.0	3,100.0	3,100.0	3,100.0	6.9	6.9	86.86	3.3	59.7	59.8	46.1	13.71	4.364		
3,200.0	3,200.0	3,200.0	3,200.0	7.1	7.1	86.86	3.3	59.7	59.8	45.7	14.16	4.225		
3,300.0	3,300.0	3,300.0	3,300.0	7.3	7.3	86.86	3.3	59.7	59.8	45.2	14.61	4.095		
3,400.0	3,400.0	3,400.0	3,400.0	7.5	7.5	86.86	3.3	59.7	59.8	44.8	15.06	3.973		
3,500.0	3,500.0	3,500.0	3,500.0	7.8	7.8	86.86	3.3	59.7	59.8	44.3	15.51	3.858		
3,600.0	3,600.0	3,600.0	3,600.0	8.0	8.0	86.86	3.3	59.7	59.8	43.9	15.96	3.749		
3,700.0	3,700.0	3,700.0	3,700.0	8.2	8.2	86.86	3.3	59.7	59.8	43.4	16.41	3.646		
3,800.0	3,800.0	3,800.0	3,800.0	8.4	8.4	86.86	3.3	59.7	59.8	43.0	16.86	3.549		
3,900.0	3,900.0	3,900.0	3,900.0	8.7	8.7	86.86	3.3	59.7	59.8	42.5	17.31	3.457		
4,000.0	4,000.0	4,000.0	4,000.0	8.9	8.9	86.86	3.3	59.7	59.8	42.1	17.76	3.370		
4,100.0	4,100.0	4,100.0	4,100.0	9.1	9.1	86.86	3.3	59.7	59.8	41.6	18.21	3.286 CC, ES		
4,200.0	4,200.0	4,200.0	4,200.0	9.3	9.3	-115.51	3.3	59.7	60.9	42.3	18.62	3.271 SF		
4,300.0	4,299.6	4,299.6	4,299.6	9.5	9.6	-121.68	3.3	59.7	64.7	45.7	18.99	3.406		
4,400.0	4,398.8	4,398.8	4,398.8	9.6	9.8	-130.28	3.3	59.7	72.4	53.1	19.33	3.747		
4,500.0	4,497.1	4,497.1	4,497.1	9.8	10.0	-139.32	3.3	59.7	85.4	65.8	19.60	4.357		
4,600.0	4,594.3	4,594.3	4,594.3	10.0	10.2	-147.32	3.3	59.7	104.4	84.6	19.81	5.269		
4,700.0	4,690.2	4,690.2	4,690.2	10.3	10.4	-153.74	3.3	59.7	129.4	109.4	19.95	6.484		
4,800.0	4,784.4	4,784.4	4,784.4	10.5	10.6	-158.63	3.3	59.7	160.2	140.2	20.05	7.993		
4,900.0	4,876.8	4,876.8	4,876.8	10.9	10.8	-162.32	3.3	59.7	196.6	176.5	20.09	9.786		
5,000.0	4,967.1	4,967.1	4,967.1	11.3	11.1	-165.10	3.3	59.7	238.2	218.1	20.09	11.856		
5,100.0	5,054.9	5,054.9	5,054.9	11.8	11.2	-167.21	3.3	59.7	284.9	264.8	20.06	14.202		

CC - Min centre to center distance or convergent point, SF - min separation factor, ES - min ellipse separation

Company:	Great Western	Local Co-ordinate Reference:	Well Postle LC 11-239HN
Project:	SEC.11-T3N-R68W	TVD Reference:	WELL @ 4993.4ft (RKB - 16.5')
Reference Site:	Postle West Pad Sec.11-T3N-R68W	MD Reference:	WELL @ 4993.4ft (RKB - 16.5')
Site Error:	0.0ft	North Reference:	True
Reference Well:	Postle LC 11-239HN	Survey Calculation Method:	Minimum Curvature
Well Error:	0.0ft	Output errors are at	2.00 sigma
Reference Wellbore	Wellbore #1	Database:	Landmark
Reference Design:	Plan #1 (12-10-13)	Offset TVD Reference:	Offset Datum

Offset Design Postle West Pad Sec.11-T3N-R68W - Postle LC 11-159HC - Wellbore #1 - Plan #1 (12-10-13)													Offset Site Error:	0.0ft
Survey Program: 0-MWD													Offset Well Error:	0.0ft
Reference		Offset		Semi Major Axis			Distance						Warning	
Measured Depth (ft)	Vertical Depth (ft)	Measured Depth (ft)	Vertical Depth (ft)	Reference (ft)	Offset (ft)	Highside Tooface (°)	Offset Wellbore Centre +N/-S (ft)	+E/-W (ft)	Between Centres (ft)	Between Ellipses (ft)	Minimum Separation (ft)	Separation Factor		
5,200.0	5,141.2	5,141.2	5,141.2	12.3	11.4	-169.07	3.3	59.7	334.6	314.2	20.38	16.416		
5,300.0	5,227.5	5,227.5	5,227.5	12.9	11.6	-170.50	3.3	59.7	384.6	363.8	20.78	18.505		
5,400.0	5,313.8	5,317.1	5,317.1	13.6	11.8	-171.64	3.2	59.7	434.6	413.4	21.20	20.500		
5,500.0	5,400.0	5,427.5	5,427.4	14.3	12.1	-173.00	1.0	56.1	482.0	460.4	21.64	22.272		
5,600.0	5,486.3	5,543.1	5,542.4	15.0	12.3	-174.55	-4.9	46.6	525.1	503.0	22.09	23.774		
5,700.0	5,572.6	5,663.2	5,661.1	15.8	12.5	-176.31	-15.0	30.5	563.7	541.2	22.56	24.988		
5,800.0	5,658.8	5,787.3	5,782.0	16.6	12.8	-178.28	-29.5	7.3	597.7	574.7	23.07	25.912		
5,900.0	5,745.1	5,914.3	5,903.7	17.4	13.1	-179.52	-48.7	-23.3	627.1	603.5	23.63	26.540		
6,000.0	5,831.4	6,043.2	6,024.6	18.2	13.5	-177.06	-72.4	-61.3	652.0	627.7	24.27	26.862		
6,100.0	5,917.6	6,172.9	6,142.8	19.0	14.0	-174.33	-100.7	-106.4	672.6	647.5	25.03	26.871		
6,200.0	6,003.9	6,302.1	6,256.8	19.9	14.6	-171.34	-133.0	-158.1	689.2	663.2	25.95	26.558		
6,300.0	6,090.2	6,399.4	6,340.7	20.7	15.1	-169.00	-159.1	-199.7	704.2	677.4	26.87	26.211		
6,400.0	6,176.5	6,494.0	6,422.3	21.6	15.7	-166.81	-184.4	-240.3	720.4	692.5	27.88	25.843		
6,500.0	6,262.7	6,588.6	6,504.0	22.5	16.4	-164.71	-209.8	-280.8	737.6	708.6	28.98	25.449		
6,600.0	6,349.0	6,683.3	6,585.6	23.4	17.0	-162.70	-235.2	-321.4	755.8	725.6	30.19	25.038		
6,700.0	6,435.3	6,777.9	6,667.3	24.3	17.7	-160.78	-260.5	-361.9	775.0	743.5	31.48	24.618		
6,800.0	6,521.5	6,873.8	6,750.6	25.2	18.4	-159.03	-286.4	-401.7	794.9	762.1	32.80	24.235		
6,900.0	6,607.8	6,976.3	6,845.4	26.1	18.9	-158.57	-315.8	-426.6	814.9	781.2	33.73	24.158		
7,000.0	6,694.1	7,076.6	6,940.9	27.0	19.2	-159.75	-345.3	-428.2	834.5	800.4	34.14	24.446		
7,100.0	6,781.3	7,169.3	7,027.5	27.8	19.3	-174.21	-372.0	-409.6	854.8	821.1	33.71	25.360		
7,200.0	6,867.7	7,257.6	7,104.9	28.4	19.4	-148.51	-395.7	-374.6	875.6	842.0	33.62	26.048		
7,300.0	6,948.9	7,342.7	7,171.7	28.9	19.3	-129.56	-416.2	-326.3	895.7	861.7	33.98	26.358		
7,400.0	7,020.8	7,425.0	7,226.8	29.2	19.3	-116.89	-433.0	-267.6	913.7	879.0	34.72	26.319		
7,500.0	7,079.6	7,506.8	7,270.3	29.5	19.3	-108.64	-446.2	-199.7	928.6	892.9	35.77	25.962		
7,600.0	7,122.3	7,587.2	7,300.6	29.6	19.5	-103.54	-455.3	-125.9	939.6	902.4	37.14	25.298		
7,700.0	7,146.8	7,666.9	7,317.6	29.6	19.9	-100.87	-460.2	-48.3	945.9	907.1	38.84	24.353		
7,800.0	7,152.4	7,751.6	7,321.4	29.6	20.7	-100.27	-461.1	36.2	947.5	906.6	40.85	23.194		
7,900.0	7,152.4	7,851.6	7,321.4	29.7	22.0	-100.27	-460.7	136.2	947.6	904.2	43.46	21.807		
8,000.0	7,152.4	7,951.6	7,321.4	29.9	23.6	-100.27	-460.3	236.2	947.7	901.2	46.56	20.354		
8,100.0	7,152.4	8,051.6	7,321.4	30.4	25.5	-100.27	-460.0	336.2	947.9	897.8	50.09	18.925		
8,200.0	7,152.4	8,151.6	7,321.4	31.3	27.5	-100.27	-459.6	436.2	948.0	894.1	53.95	17.572		
8,300.0	7,152.4	8,251.6	7,321.4	32.5	29.6	-100.27	-459.2	536.2	948.1	890.1	58.08	16.324		
8,400.0	7,152.4	8,351.6	7,321.4	34.1	31.9	-100.27	-458.8	636.2	948.3	885.8	62.43	15.190		
8,500.0	7,152.4	8,451.6	7,321.4	36.0	34.2	-100.26	-458.5	736.2	948.4	881.4	66.95	14.166		
8,600.0	7,152.4	8,551.6	7,321.4	38.0	36.6	-100.26	-458.1	836.2	948.5	876.9	71.61	13.245		
8,700.0	7,152.4	8,651.6	7,321.4	40.2	39.0	-100.26	-457.7	936.2	948.7	872.3	76.39	12.418		
8,800.0	7,152.4	8,751.6	7,321.4	42.5	41.5	-100.26	-457.3	1,036.2	948.8	867.5	81.27	11.675		
8,900.0	7,152.4	8,851.6	7,321.4	44.9	44.0	-100.26	-457.0	1,136.2	948.9	862.7	86.22	11.006		
9,000.0	7,152.4	8,951.6	7,321.4	47.3	46.6	-100.26	-456.6	1,236.2	949.1	857.8	91.24	10.402		
9,100.0	7,152.4	9,051.6	7,321.4	49.8	49.2	-100.26	-456.2	1,336.2	949.2	852.9	96.31	9.856		
9,200.0	7,152.4	9,151.6	7,321.4	52.3	51.8	-100.25	-455.8	1,436.2	949.3	847.9	101.43	9.359		
9,300.0	7,152.4	9,251.6	7,321.4	54.8	54.4	-100.25	-455.5	1,536.2	949.4	842.9	106.59	8.907		
9,400.0	7,152.4	9,351.6	7,321.4	57.4	57.1	-100.25	-455.1	1,636.2	949.6	837.8	111.79	8.494		
9,500.0	7,152.4	9,451.6	7,321.4	60.0	59.7	-100.25	-454.7	1,736.2	949.7	832.7	117.01	8.116		
9,600.0	7,152.4	9,551.6	7,321.4	62.6	62.4	-100.25	-454.3	1,836.2	949.8	827.6	122.27	7.769		
9,700.0	7,152.4	9,651.6	7,321.4	65.2	65.1	-100.25	-453.9	1,936.2	950.0	822.4	127.54	7.448		
9,800.0	7,152.4	9,751.6	7,321.4	67.9	67.8	-100.25	-453.6	2,036.2	950.1	817.3	132.84	7.152		
9,900.0	7,152.4	9,851.6	7,321.4	70.5	70.5	-100.24	-453.2	2,136.1	950.2	812.1	138.15	6.878		
10,000.0	7,152.4	9,951.6	7,321.4	73.2	73.2	-100.24	-452.8	2,236.1	950.4	806.9	143.48	6.624		
10,100.0	7,152.4	10,051.6	7,321.4	75.8	75.9	-100.24	-452.4	2,336.1	950.5	801.7	148.83	6.387		
10,200.0	7,152.4	10,151.6	7,321.4	78.5	78.6	-100.24	-452.1	2,436.1	950.6	796.4	154.18	6.166		
10,300.0	7,152.4	10,251.6	7,321.4	81.2	81.3	-100.24	-451.7	2,536.1	950.8	791.2	159.55	5.959		

CC - Min centre to center distance or convergent point, SF - min separation factor, ES - min ellipse separation

Company:	Great Western	Local Co-ordinate Reference:	Well Postle IC 11-239HN
Project:	SEC.11-T3N-R68W	TVD Reference:	WELL @ 4993.4ft (RKB - 16.5')
Reference Site:	Postle West Pad Sec.11-T3N-R68W	MD Reference:	WELL @ 4993.4ft (RKB - 16.5')
Site Error:	0.0ft	North Reference:	True
Reference Well:	Postle IC 11-239HN	Survey Calculation Method:	Minimum Curvature
Well Error:	0.0ft	Output errors are at	2.00 sigma
Reference Wellbore	Wellbore #1	Database:	Landmark
Reference Design:	Plan #1 (12-10-13)	Offset TVD Reference:	Offset Datum

Offset Design													Postle West Pad Sec.11-T3N-R68W - Postle LC 11-159HC - Wellbore #1 - Plan #1 (12-10-13)	Offset Site Error:	0.0 ft
Survey Program: 0-MWD														Offset Well Error:	0.0 ft
Reference		Offset		Semi Major Axis			Distance						Warning		
Measured Depth (ft)	Vertical Depth (ft)	Measured Depth (ft)	Vertical Depth (ft)	Reference (ft)	Offset (ft)	Highside Toolface (°)	Offset Wellbore Centre +N/-S (ft)	+E/-W (ft)	Between Centres (ft)	Between Ellipses (ft)	Minimum Separation (ft)	Separation Factor			
10,400.0	7,152.4	10,351.5	7,321.4	83.9	84.1	-100.24	-451.3	2,636.1	950.9	786.0	164.93	5.765			
10,500.0	7,152.4	10,451.5	7,321.4	86.6	86.8	-100.24	-450.9	2,736.1	951.0	780.7	170.32	5.584			
10,600.0	7,152.4	10,551.5	7,321.4	89.3	89.5	-100.23	-450.6	2,836.1	951.2	775.4	175.72	5.413			
10,700.0	7,152.4	10,651.5	7,321.4	92.0	92.3	-100.23	-450.2	2,936.1	951.3	770.2	181.12	5.252			
10,800.0	7,152.4	10,751.5	7,321.4	94.8	95.0	-100.23	-449.8	3,036.1	951.4	764.9	186.53	5.100			
10,900.0	7,152.4	10,851.5	7,321.4	97.5	97.8	-100.23	-449.4	3,136.1	951.5	759.6	191.95	4.957			
11,000.0	7,152.4	10,951.5	7,321.4	100.2	100.5	-100.23	-449.1	3,236.1	951.7	754.3	197.38	4.822			
11,100.0	7,152.4	11,051.5	7,321.4	103.0	103.3	-100.23	-448.7	3,336.1	951.8	749.0	202.81	4.693			
11,200.0	7,152.4	11,151.5	7,321.4	105.7	106.0	-100.23	-448.3	3,436.1	951.9	743.7	208.24	4.571			
11,300.0	7,152.4	11,251.5	7,321.4	108.4	108.8	-100.22	-447.9	3,536.1	952.1	738.4	213.68	4.456			
11,400.0	7,152.4	11,351.5	7,321.4	111.2	111.6	-100.22	-447.5	3,636.1	952.2	733.1	219.13	4.345			
11,500.0	7,152.4	11,451.5	7,321.4	113.9	114.3	-100.22	-447.2	3,736.1	952.3	727.8	224.58	4.241			
11,600.0	7,152.4	11,551.5	7,321.4	116.7	117.1	-100.22	-446.8	3,836.1	952.5	722.4	230.03	4.141			
11,700.0	7,152.4	11,651.5	7,321.4	119.4	119.9	-100.22	-446.4	3,936.1	952.6	717.1	235.48	4.045			
11,800.0	7,152.4	11,751.5	7,321.4	122.2	122.6	-100.22	-446.0	4,036.1	952.7	711.8	240.94	3.954			
11,900.0	7,152.4	11,851.5	7,321.4	124.9	125.4	-100.22	-445.7	4,136.1	952.9	706.5	246.40	3.867			
12,000.0	7,152.4	11,951.5	7,321.4	127.7	128.2	-100.21	-445.3	4,236.1	953.0	701.1	251.87	3.784			
12,100.0	7,152.4	12,051.5	7,321.4	130.5	131.0	-100.21	-444.9	4,336.1	953.1	695.8	257.34	3.704			
12,123.4	7,152.4	12,074.9	7,321.4	130.9	131.6	-100.21	-444.8	4,359.5	953.1	694.8	258.38	3.689			

Company:	Great Western	Local Co-ordinate Reference:	Well Postle LC 11-239HN
Project:	SEC.11-T3N-R68W	TVD Reference:	WELL @ 4993.4ft (RKB - 16.5')
Reference Site:	Postle West Pad Sec.11-T3N-R68W	MD Reference:	WELL @ 4993.4ft (RKB - 16.5')
Site Error:	0.0ft	North Reference:	True
Reference Well:	Postle LC 11-239HN	Survey Calculation Method:	Minimum Curvature
Well Error:	0.0ft	Output errors are at	2.00 sigma
Reference Wellbore	Wellbore #1	Database:	Landmark
Reference Design:	Plan #1 (12-10-13)	Offset TVD Reference:	Offset Datum

Offset Design													Postle West Pad Sec.11-T3N-R68W - Postle LC 11-162HN - Wellbore #1 - Plan #1 (12-10-13)	Offset Site Error:	0.0 ft
Survey Program: 0-MWD														Offset Well Error:	0.0 ft
Reference		Offset		Semi Major Axis			Distance						Warning		
Measured Depth (ft)	Vertical Depth (ft)	Measured Depth (ft)	Vertical Depth (ft)	Reference (ft)	Offset (ft)	Highside Toolface (°)	Offset Wellbore Centre +N/-S (ft)	+E/-W (ft)	Between Centres (ft)	Between Ellipses (ft)	Minimum Separation (ft)	Separation Factor			
0.0	0.0	0.0	0.0	0.0	0.0	85.78	2.2	29.6	29.7						
100.0	100.0	100.0	100.0	0.1	0.1	85.78	2.2	29.6	29.7	29.4	0.22	132.013			
200.0	200.0	200.0	200.0	0.3	0.3	85.78	2.2	29.6	29.7	29.0	0.67	44.004			
300.0	300.0	300.0	300.0	0.6	0.6	85.78	2.2	29.6	29.7	28.5	1.12	26.403			
400.0	400.0	400.0	400.0	0.8	0.8	85.78	2.2	29.6	29.7	28.1	1.57	18.859			
500.0	500.0	500.0	500.0	1.0	1.0	85.78	2.2	29.6	29.7	27.6	2.02	14.668			
600.0	600.0	600.0	600.0	1.2	1.2	85.78	2.2	29.6	29.7	27.2	2.47	12.001			
700.0	700.0	700.0	700.0	1.5	1.5	85.78	2.2	29.6	29.7	26.8	2.92	10.155			
800.0	800.0	800.0	800.0	1.7	1.7	85.78	2.2	29.6	29.7	26.3	3.37	8.801			
900.0	900.0	900.0	900.0	1.9	1.9	85.78	2.2	29.6	29.7	25.9	3.82	7.765			
1,000.0	1,000.0	1,000.0	1,000.0	2.1	2.1	85.78	2.2	29.6	29.7	25.4	4.27	6.948			
1,100.0	1,100.0	1,100.0	1,100.0	2.4	2.4	85.78	2.2	29.6	29.7	25.0	4.72	6.286			
1,200.0	1,200.0	1,200.0	1,200.0	2.6	2.6	85.78	2.2	29.6	29.7	24.5	5.17	5.740			
1,300.0	1,300.0	1,300.0	1,300.0	2.8	2.8	85.78	2.2	29.6	29.7	24.1	5.62	5.281			
1,400.0	1,400.0	1,400.0	1,400.0	3.0	3.0	85.78	2.2	29.6	29.7	23.6	6.07	4.889			
1,500.0	1,500.0	1,500.0	1,500.0	3.3	3.3	85.78	2.2	29.6	29.7	23.2	6.52	4.552			
1,600.0	1,600.0	1,600.0	1,600.0	3.5	3.5	85.78	2.2	29.6	29.7	22.7	6.97	4.258			
1,700.0	1,700.0	1,700.0	1,700.0	3.7	3.7	85.78	2.2	29.6	29.7	22.3	7.42	4.000			
1,800.0	1,800.0	1,800.0	1,800.0	3.9	3.9	85.78	2.2	29.6	29.7	21.8	7.87	3.772			
1,900.0	1,900.0	1,900.0	1,900.0	4.2	4.2	85.78	2.2	29.6	29.7	21.4	8.32	3.568			
2,000.0	2,000.0	2,000.0	2,000.0	4.4	4.4	85.78	2.2	29.6	29.7	20.9	8.77	3.385			
2,100.0	2,100.0	2,100.0	2,100.0	4.6	4.6	85.78	2.2	29.6	29.7	20.5	9.22	3.220			
2,200.0	2,200.0	2,200.0	2,200.0	4.8	4.8	85.78	2.2	29.6	29.7	20.0	9.66	3.070			
2,300.0	2,300.0	2,300.0	2,300.0	5.1	5.1	85.78	2.2	29.6	29.7	19.6	10.11	2.934			
2,400.0	2,400.0	2,400.0	2,400.0	5.3	5.3	85.78	2.2	29.6	29.7	19.1	10.56	2.809			
2,500.0	2,500.0	2,500.0	2,500.0	5.5	5.5	85.78	2.2	29.6	29.7	18.7	11.01	2.694			
2,600.0	2,600.0	2,600.0	2,600.0	5.7	5.7	85.78	2.2	29.6	29.7	18.2	11.46	2.588			
2,700.0	2,700.0	2,700.0	2,700.0	6.0	6.0	85.78	2.2	29.6	29.7	17.8	11.91	2.491			
2,800.0	2,800.0	2,800.0	2,800.0	6.2	6.2	85.78	2.2	29.6	29.7	17.3	12.36	2.400			
2,900.0	2,900.0	2,900.0	2,900.0	6.4	6.4	85.78	2.2	29.6	29.7	16.9	12.81	2.316			
3,000.0	3,000.0	3,000.0	3,000.0	6.6	6.6	85.78	2.2	29.6	29.7	16.4	13.26	2.238			
3,100.0	3,100.0	3,100.0	3,100.0	6.9	6.9	85.78	2.2	29.6	29.7	16.0	13.71	2.164			
3,200.0	3,200.0	3,200.0	3,200.0	7.1	7.1	85.78	2.2	29.6	29.7	15.5	14.16	2.095			
3,300.0	3,300.0	3,300.0	3,300.0	7.3	7.3	85.78	2.2	29.6	29.7	15.1	14.61	2.031			
3,400.0	3,400.0	3,400.0	3,400.0	7.5	7.5	85.78	2.2	29.6	29.7	14.6	15.06	1.970			
3,500.0	3,500.0	3,500.0	3,500.0	7.8	7.8	85.78	2.2	29.6	29.7	14.2	15.51	1.913			
3,600.0	3,600.0	3,600.0	3,600.0	8.0	8.0	85.78	2.2	29.6	29.7	13.7	15.96	1.859			
3,700.0	3,700.0	3,700.0	3,700.0	8.2	8.2	85.78	2.2	29.6	29.7	13.3	16.41	1.808			
3,800.0	3,800.0	3,800.0	3,800.0	8.4	8.4	85.78	2.2	29.6	29.7	12.8	16.86	1.760			
3,900.0	3,900.0	3,900.0	3,900.0	8.7	8.7	85.78	2.2	29.6	29.7	12.4	17.31	1.714			
4,000.0	4,000.0	4,000.0	4,000.0	8.9	8.9	85.78	2.2	29.6	29.7	11.9	17.76	1.671			
4,100.0	4,100.0	4,100.0	4,100.0	9.1	9.1	85.78	2.2	29.6	29.7	11.5	18.21	1.630 CC, ES, SF			
4,200.0	4,200.0	4,200.0	4,200.0	9.3	9.3	-118.76	2.2	29.6	30.8	12.2	18.62	1.656			
4,300.0	4,299.6	4,299.6	4,299.6	9.5	9.6	-129.87	2.2	29.6	35.3	16.3	18.98	1.660			
4,400.0	4,398.8	4,398.8	4,398.8	9.6	9.8	-142.57	2.2	29.6	44.8	25.5	19.28	2.324			
4,500.0	4,497.1	4,497.1	4,497.1	9.8	10.0	-152.89	2.2	29.6	60.4	40.8	19.52	3.092			
4,600.0	4,594.3	4,594.3	4,594.3	10.0	10.2	-160.10	2.2	29.6	81.9	62.2	19.70	4.156			
4,700.0	4,690.2	4,690.2	4,690.2	10.3	10.4	-164.95	2.2	29.6	109.1	89.3	19.84	5.500			
4,800.0	4,784.4	4,784.4	4,784.4	10.5	10.6	-168.24	2.2	29.6	141.7	121.8	19.93	7.110			
4,900.0	4,876.8	4,876.8	4,876.8	10.9	10.8	-170.53	2.2	29.6	179.4	159.4	19.97	8.982			
5,000.0	4,967.1	4,973.1	4,973.1	11.3	11.1	-172.31	1.6	29.1	221.4	201.4	19.98	11.084			
5,100.0	5,054.9	5,076.1	5,076.1	11.8	11.2	-174.00	-2.8	25.6	264.1	244.2	19.92	13.257			

CC - Min centre to center distance or convergent point, SF - min separation factor, ES - min ellipse separation

Company:	Great Western	Local Co-ordinate Reference:	Well Postle LC 11-239HN
Project:	SEC.11-T3N-R68W	TVD Reference:	WELL @ 4993.4ft (RKB - 16.5')
Reference Site:	Postle West Pad Sec.11-T3N-R68W	MD Reference:	WELL @ 4993.4ft (RKB - 16.5')
Site Error:	0.0ft	North Reference:	True
Reference Well:	Postle LC 11-239HN	Survey Calculation Method:	Minimum Curvature
Well Error:	0.0ft	Output errors are at	2.00 sigma
Reference Wellbore	Wellbore #1	Database:	Landmark
Reference Design:	Plan #1 (12-10-13)	Offset TVD Reference:	Offset Datum

Offset Design													Postle West Pad Sec.11-T3N-R68W - Postle LC 11-162HN - Wellbore #1 - Plan #1 (12-10-13)	Offset Site Error:	0.0ft
Survey Program: 0-MWD														Offset Well Error:	0.0ft
Reference		Offset		Semi Major Axis			Distance						Warning		
Measured Depth (ft)	Vertical Depth (ft)	Measured Depth (ft)	Vertical Depth (ft)	Reference (ft)	Offset (ft)	Highside Toolface (°)	Offset Wellbore Centre +N/-S (ft)	+E/-W (ft)	Between Centres (ft)	Between Ellipses (ft)	Minimum Separation (ft)	Separation Factor			
5,200.0	5,141.2	5,182.4	5,181.6	12.3	11.4	-175.89	-11.8	18.2	305.1	284.8	20.25	15.063			
5,300.0	5,227.5	5,293.6	5,291.2	12.9	11.6	-177.30	-26.0	6.6	341.1	320.5	20.67	16.505			
5,400.0	5,313.8	5,409.0	5,403.7	13.6	11.9	-178.92	-46.1	-9.7	372.0	350.9	21.12	17.615			
5,500.0	5,400.0	5,528.1	5,517.9	14.3	12.2	179.37	-72.2	-31.0	397.5	375.9	21.61	18.394			
5,600.0	5,486.3	5,650.1	5,632.4	15.0	12.5	177.50	-104.7	-57.5	417.4	395.3	22.14	18.851			
5,700.0	5,572.6	5,774.0	5,745.8	15.8	12.9	175.43	-143.4	-89.0	431.8	409.0	22.75	18.982			
5,800.0	5,658.8	5,898.9	5,856.6	16.6	13.5	173.08	-188.1	-125.4	440.5	417.1	23.44	18.798			
5,900.0	5,745.1	6,003.4	5,947.0	17.4	14.0	170.94	-228.7	-158.5	445.7	421.5	24.16	18.450			
6,000.0	5,831.4	6,102.0	6,032.3	18.2	14.6	168.96	-267.2	-189.8	451.3	426.3	24.94	18.095			
6,100.0	5,917.6	6,200.6	6,117.5	19.0	15.2	167.03	-305.7	-221.1	457.4	431.6	25.80	17.727			
6,200.0	6,003.9	6,299.2	6,202.7	19.9	15.9	165.15	-344.1	-252.5	464.0	437.2	26.75	17.346			
6,300.0	6,090.2	6,397.9	6,287.9	20.7	16.6	163.33	-382.6	-283.8	471.1	443.3	27.78	16.956			
6,400.0	6,176.5	6,496.5	6,373.1	21.6	17.3	161.56	-421.1	-315.1	478.7	449.8	28.90	16.562			
6,500.0	6,262.7	6,595.1	6,458.4	22.5	18.1	159.85	-459.5	-346.5	486.7	456.6	30.10	16.168			
6,600.0	6,349.0	6,693.7	6,543.6	23.4	18.9	158.19	-498.0	-377.8	495.2	463.8	31.38	15.779			
6,700.0	6,435.3	6,793.1	6,629.5	24.3	19.7	156.58	-536.8	-409.3	504.1	471.3	32.74	15.396			
6,800.0	6,521.5	6,904.0	6,728.7	25.2	20.3	156.63	-581.5	-429.0	511.9	478.3	33.61	15.230			
6,900.0	6,607.8	7,008.5	6,823.6	26.1	20.7	159.46	-624.2	-422.1	518.2	484.7	33.56	15.440			
7,000.0	6,694.1	7,097.4	6,901.3	27.0	21.0	163.80	-659.1	-397.2	526.3	493.2	33.03	15.933			
7,100.0	6,781.3	7,175.0	6,964.2	27.8	21.1	-168.56	-687.3	-361.8	539.1	506.6	32.48	16.597			
7,200.0	6,867.7	7,245.4	7,015.7	28.4	21.1	-141.60	-710.3	-319.7	555.4	522.7	32.70	16.984			
7,300.0	6,948.9	7,314.1	7,059.3	28.9	21.1	-121.52	-729.8	-270.5	572.9	539.4	33.45	17.129			
7,400.0	7,020.8	7,380.6	7,094.5	29.2	21.1	-107.96	-745.5	-216.3	589.6	555.3	34.35	17.167			
7,500.0	7,079.6	7,445.6	7,121.3	29.5	21.0	-99.07	-757.4	-158.3	604.0	568.7	35.26	17.130			
7,600.0	7,122.3	7,509.8	7,139.9	29.6	20.9	-93.54	-765.6	-97.6	614.8	578.4	36.31	16.932			
7,700.0	7,146.8	7,575.0	7,150.3	29.6	20.8	-90.64	-770.0	-33.4	621.1	583.4	37.71	16.471			
7,800.0	7,152.4	7,646.0	7,152.4	29.6	20.6	-90.00	-770.8	37.6	622.6	583.1	39.56	15.738			
7,900.0	7,152.4	7,746.0	7,152.4	29.7	21.1	-90.00	-770.4	137.6	622.7	580.5	42.18	14.763			
8,000.0	7,152.4	7,846.0	7,152.4	29.9	22.9	-90.00	-770.1	237.6	622.8	577.5	45.34	13.738			
8,100.0	7,152.4	7,946.0	7,152.4	30.4	24.9	-90.00	-769.8	337.6	622.9	574.0	48.93	12.730			
8,200.0	7,152.4	8,046.0	7,152.4	31.3	26.9	-90.00	-769.4	437.6	623.0	570.1	52.88	11.781			
8,300.0	7,152.4	8,146.0	7,152.4	32.5	29.1	-90.00	-769.1	537.6	623.1	566.0	57.11	10.910			
8,400.0	7,152.4	8,246.0	7,152.4	34.1	31.4	-90.00	-768.8	637.6	623.2	561.6	61.56	10.123			
8,500.0	7,152.4	8,346.0	7,152.4	36.0	33.7	-90.00	-768.4	737.6	623.3	557.1	66.19	9.417			
8,600.0	7,152.4	8,446.0	7,152.4	38.0	36.1	-90.00	-768.1	837.6	623.4	552.4	70.96	8.785			
8,700.0	7,152.4	8,546.0	7,152.4	40.2	38.6	-90.00	-767.8	937.6	623.4	547.6	75.84	8.220			
8,800.0	7,152.4	8,646.0	7,152.4	42.5	41.1	-90.00	-767.4	1,037.6	623.5	542.7	80.82	7.715			
8,900.0	7,152.4	8,746.0	7,152.4	44.9	43.6	-90.00	-767.1	1,137.6	623.6	537.8	85.88	7.262			
9,000.0	7,152.4	8,846.0	7,152.4	47.3	46.2	-90.00	-766.7	1,237.6	623.7	532.7	91.00	6.854			
9,100.0	7,152.4	8,946.0	7,152.4	49.8	48.7	-90.00	-766.4	1,337.6	623.8	527.6	96.17	6.486			
9,200.0	7,152.4	9,046.0	7,152.4	52.3	51.3	-90.00	-766.1	1,437.6	623.9	522.5	101.40	6.153			
9,300.0	7,152.4	9,146.0	7,152.4	54.8	54.0	-90.00	-765.7	1,537.6	624.0	517.3	106.66	5.850			
9,400.0	7,152.4	9,246.0	7,152.4	57.4	56.6	-90.00	-765.4	1,637.6	624.1	512.1	111.96	5.574			
9,500.0	7,152.4	9,346.0	7,152.4	60.0	59.3	-90.00	-765.1	1,737.6	624.2	506.9	117.28	5.322			
9,600.0	7,152.4	9,446.0	7,152.4	62.6	61.9	-90.00	-764.7	1,837.6	624.3	501.6	122.63	5.091			
9,700.0	7,152.4	9,546.0	7,152.4	65.2	64.6	-90.00	-764.4	1,937.6	624.4	496.4	128.00	4.878			
9,800.0	7,152.4	9,646.0	7,152.4	67.9	67.3	-90.00	-764.1	2,037.6	624.5	491.1	133.40	4.681			
9,900.0	7,152.4	9,746.0	7,152.4	70.5	70.0	-90.00	-763.7	2,137.6	624.5	485.7	138.81	4.499			
10,000.0	7,152.4	9,846.0	7,152.4	73.2	72.7	-90.00	-763.4	2,237.6	624.6	480.4	144.23	4.331			
10,100.0	7,152.4	9,946.0	7,152.4	75.8	75.4	-90.00	-763.1	2,337.6	624.7	475.1	149.67	4.174			
10,200.0	7,152.4	10,046.0	7,152.4	78.5	78.2	-90.00	-762.7	2,437.6	624.8	469.7	155.12	4.028			
10,300.0	7,152.4	10,146.0	7,152.4	81.2	80.9	-90.00	-762.4	2,537.6	624.9	464.3	160.58	3.892			

CC - Min centre to center distance or convergent point, SF - min separation factor, ES - min ellipse separation

Company:	Great Western	Local Co-ordinate Reference:	Well Postle IC 11-239HN
Project:	SEC.11-T3N-R68W	TVD Reference:	WELL @ 4993.4ft (RKB - 16.5')
Reference Site:	Postle West Pad Sec.11-T3N-R68W	MD Reference:	WELL @ 4993.4ft (RKB - 16.5')
Site Error:	0.0ft	North Reference:	True
Reference Well:	Postle IC 11-239HN	Survey Calculation Method:	Minimum Curvature
Well Error:	0.0ft	Output errors are at	2.00 sigma
Reference Wellbore	Wellbore #1	Database:	Landmark
Reference Design:	Plan #1 (12-10-13)	Offset TVD Reference:	Offset Datum

Offset Design												Postle West Pad Sec.11-T3N-R68W - Postle LC 11-162HN - Wellbore #1 - Plan #1 (12-10-13)	Offset Site Error:	0.0ft
Survey Program: O-MWD													Offset Well Error:	0.0ft
Reference		Offset		Semi Major Axis			Distance					Warning		
Measured Depth (ft)	Vertical Depth (ft)	Measured Depth (ft)	Vertical Depth (ft)	Reference (ft)	Offset (ft)	Highside Toolface (")	Offset Wellbore Centre +N/-S (ft)	+E/-W (ft)	Between Centres (ft)	Between Ellipses (ft)	Minimum Separation (ft)		Separation Factor	
10,400.0	7,152.4	10,246.0	7,152.4	83.9	83.6	-90.00	-762.1	2,637.6	625.0	458.9	166.05	3.764		
10,500.0	7,152.4	10,346.0	7,152.4	86.6	86.4	-90.00	-761.7	2,737.6	625.1	453.6	171.53	3.644		
10,600.0	7,152.4	10,446.0	7,152.4	89.3	89.1	-90.00	-761.4	2,837.6	625.2	448.2	177.02	3.532		
10,700.0	7,152.4	10,546.0	7,152.4	92.0	91.8	-90.00	-761.1	2,937.6	625.3	442.8	182.52	3.426		
10,800.0	7,152.4	10,646.0	7,152.4	94.8	94.6	-90.00	-760.7	3,037.6	625.4	437.3	188.02	3.326		
10,900.0	7,152.4	10,746.0	7,152.4	97.5	97.3	-90.00	-760.4	3,137.6	625.5	431.9	193.53	3.232		
11,000.0	7,152.4	10,846.0	7,152.4	100.2	100.1	-90.00	-760.0	3,237.6	625.6	426.5	199.05	3.143		
11,100.0	7,152.4	10,946.0	7,152.4	103.0	102.8	-90.00	-759.7	3,337.6	625.6	421.1	204.57	3.058		
11,200.0	7,152.4	11,046.0	7,152.4	105.7	105.6	-90.00	-759.4	3,437.6	625.7	415.6	210.09	2.978		
11,300.0	7,152.4	11,146.0	7,152.4	108.4	108.4	-90.00	-759.0	3,537.6	625.8	410.2	215.62	2.902		
11,400.0	7,152.4	11,246.0	7,152.4	111.2	111.1	-90.00	-758.7	3,637.6	625.9	404.8	221.15	2.830		
11,500.0	7,152.4	11,346.0	7,152.4	113.9	113.9	-90.00	-758.4	3,737.6	626.0	399.3	226.69	2.762		
11,600.0	7,152.4	11,446.0	7,152.4	116.7	116.7	-90.00	-758.0	3,837.6	626.1	393.9	232.23	2.696		
11,700.0	7,152.4	11,546.0	7,152.4	119.4	119.4	-90.00	-757.7	3,937.6	626.2	388.4	237.77	2.634		
11,800.0	7,152.4	11,646.0	7,152.4	122.2	122.2	-90.00	-757.4	4,037.6	626.3	383.0	243.32	2.574		
11,900.0	7,152.4	11,746.0	7,152.4	124.9	125.0	-90.00	-757.0	4,137.6	626.4	377.5	248.87	2.517		
12,000.0	7,152.4	11,846.0	7,152.4	127.7	127.7	-90.00	-756.7	4,237.6	626.5	372.0	254.42	2.462		
12,100.0	7,152.4	11,946.0	7,152.4	130.5	130.1	-90.00	-756.4	4,337.6	626.6	367.0	259.51	2.414		
12,123.4	7,152.4	11,969.4	7,152.4	130.9	130.5	-90.00	-756.3	4,360.9	626.6	366.2	260.34	2.407		

Company:	Great Western	Local Co-ordinate Reference:	Well Postle IC 11-239HN
Project:	SEC.11-T3N-R68W	TVD Reference:	WELL @ 4993.4ft (RKB - 16.5')
Reference Site:	Postle West Pad Sec.11-T3N-R68W	MD Reference:	WELL @ 4993.4ft (RKB - 16.5')
Site Error:	0.0ft	North Reference:	True
Reference Well:	Postle IC 11-239HN	Survey Calculation Method:	Minimum Curvature
Well Error:	0.0ft	Output errors are at	2.00 sigma
Reference Wellbore	Wellbore #1	Database:	Landmark
Reference Design:	Plan #1 (12-10-13)	Offset TVD Reference:	Offset Datum

Offset Design Postle West Pad Sec.11-T3N-R68W - Postle LC 11-259HC - Wellbore #1 - Plan #1 (12-10-13)													Offset Site Error:	0.0 ft
Survey Program: 0-MWD													Offset Well Error:	0.0 ft
Reference		Offset		Semi Major Axis			Distance						Warning	
Measured Depth (ft)	Vertical Depth (ft)	Measured Depth (ft)	Vertical Depth (ft)	Reference (ft)	Offset (ft)	Highside Toolface (°)	Offset Wellbore Centre +N/-S (ft)	+E/-W (ft)	Between Centres (ft)	Between Ellipses (ft)	Minimum Separation (ft)	Separation Factor		
0.0	0.0	0.0	0.0	0.0	0.0	-91.38	-0.7	-30.1	30.2					
100.0	100.0	100.0	100.0	0.1	0.1	-91.38	-0.7	-30.1	30.2	29.9	0.22	134.178		
200.0	200.0	200.0	200.0	0.3	0.3	-91.38	-0.7	-30.1	30.2	29.5	0.67	44.726		
300.0	300.0	300.0	300.0	0.6	0.6	-91.38	-0.7	-30.1	30.2	29.0	1.12	26.836		
400.0	400.0	400.0	400.0	0.8	0.8	-91.38	-0.7	-30.1	30.2	28.6	1.57	19.168		
500.0	500.0	500.0	500.0	1.0	1.0	-91.38	-0.7	-30.1	30.2	28.1	2.02	14.909		
600.0	600.0	600.0	600.0	1.2	1.2	-91.38	-0.7	-30.1	30.2	27.7	2.47	12.198		
700.0	700.0	700.0	700.0	1.5	1.5	-91.38	-0.7	-30.1	30.2	27.2	2.92	10.321		
800.0	800.0	800.0	800.0	1.7	1.7	-91.38	-0.7	-30.1	30.2	26.8	3.37	8.945		
900.0	900.0	900.0	900.0	1.9	1.9	-91.38	-0.7	-30.1	30.2	26.3	3.82	7.893		
1,000.0	1,000.0	1,000.0	1,000.0	2.1	2.1	-91.38	-0.7	-30.1	30.2	25.9	4.27	7.062		
1,100.0	1,100.0	1,100.0	1,100.0	2.4	2.4	-91.38	-0.7	-30.1	30.2	25.4	4.72	6.389		
1,200.0	1,200.0	1,200.0	1,200.0	2.6	2.6	-91.38	-0.7	-30.1	30.2	25.0	5.17	5.834		
1,300.0	1,300.0	1,300.0	1,300.0	2.8	2.8	-91.38	-0.7	-30.1	30.2	24.5	5.62	5.367		
1,400.0	1,400.0	1,400.0	1,400.0	3.0	3.0	-91.38	-0.7	-30.1	30.2	24.1	6.07	4.970		
1,500.0	1,500.0	1,500.0	1,500.0	3.3	3.3	-91.38	-0.7	-30.1	30.2	23.6	6.52	4.627		
1,600.0	1,600.0	1,600.0	1,600.0	3.5	3.5	-91.38	-0.7	-30.1	30.2	23.2	6.97	4.328		
1,700.0	1,700.0	1,700.0	1,700.0	3.7	3.7	-91.38	-0.7	-30.1	30.2	22.7	7.42	4.066		
1,800.0	1,800.0	1,800.0	1,800.0	3.9	3.9	-91.38	-0.7	-30.1	30.2	22.3	7.87	3.834		
1,900.0	1,900.0	1,900.0	1,900.0	4.2	4.2	-91.38	-0.7	-30.1	30.2	21.8	8.32	3.626		
2,000.0	2,000.0	2,000.0	2,000.0	4.4	4.4	-91.38	-0.7	-30.1	30.2	21.4	8.77	3.440		
2,100.0	2,100.0	2,100.0	2,100.0	4.6	4.6	-91.38	-0.7	-30.1	30.2	20.9	9.22	3.273		
2,200.0	2,200.0	2,200.0	2,200.0	4.8	4.8	-91.38	-0.7	-30.1	30.2	20.5	9.66	3.120		
2,300.0	2,300.0	2,300.0	2,300.0	5.1	5.1	-91.38	-0.7	-30.1	30.2	20.0	10.11	2.982		
2,400.0	2,400.0	2,400.0	2,400.0	5.3	5.3	-91.38	-0.7	-30.1	30.2	19.6	10.56	2.855		
2,500.0	2,500.0	2,500.0	2,500.0	5.5	5.5	-91.38	-0.7	-30.1	30.2	19.1	11.01	2.738		
2,600.0	2,600.0	2,600.0	2,600.0	5.7	5.7	-91.38	-0.7	-30.1	30.2	18.7	11.46	2.631		
2,700.0	2,700.0	2,700.0	2,700.0	6.0	6.0	-91.38	-0.7	-30.1	30.2	18.2	11.91	2.532		
2,800.0	2,800.0	2,800.0	2,800.0	6.2	6.2	-91.38	-0.7	-30.1	30.2	17.8	12.36	2.440		
2,900.0	2,900.0	2,900.0	2,900.0	6.4	6.4	-91.38	-0.7	-30.1	30.2	17.3	12.81	2.354		
3,000.0	3,000.0	3,000.0	3,000.0	6.6	6.6	-91.38	-0.7	-30.1	30.2	16.9	13.26	2.274		
3,100.0	3,100.0	3,100.0	3,100.0	6.9	6.9	-91.38	-0.7	-30.1	30.2	16.4	13.71	2.200		
3,200.0	3,200.0	3,200.0	3,200.0	7.1	7.1	-91.38	-0.7	-30.1	30.2	16.0	14.16	2.130		
3,300.0	3,300.0	3,300.0	3,300.0	7.3	7.3	-91.38	-0.7	-30.1	30.2	15.5	14.61	2.064		
3,400.0	3,400.0	3,400.0	3,400.0	7.5	7.5	-91.38	-0.7	-30.1	30.2	15.1	15.06	2.003		
3,500.0	3,500.0	3,500.0	3,500.0	7.8	7.8	-91.38	-0.7	-30.1	30.2	14.6	15.51	1.945		
3,600.0	3,600.0	3,600.0	3,600.0	8.0	8.0	-91.38	-0.7	-30.1	30.2	14.2	15.96	1.890		
3,700.0	3,700.0	3,700.0	3,700.0	8.2	8.2	-91.38	-0.7	-30.1	30.2	13.8	16.41	1.838		
3,800.0	3,800.0	3,800.0	3,800.0	8.4	8.4	-91.38	-0.7	-30.1	30.2	13.3	16.86	1.789 CC, ES		
3,900.0	3,900.0	3,899.5	3,899.4	8.7	8.6	-95.98	-3.2	-30.8	31.0	13.7	17.28	1.794		
4,000.0	4,000.0	3,998.4	3,998.0	8.9	8.8	-108.01	-10.7	-32.8	34.6	16.9	17.67	1.956		
4,100.0	4,100.0	4,096.3	4,095.1	9.1	9.0	-122.37	-22.9	-36.1	43.0	25.0	18.06	2.381		
4,200.0	4,200.0	4,193.1	4,190.3	9.3	9.1	26.52	-39.7	-40.6	55.2	36.8	18.41	3.001		
4,300.0	4,299.6	4,289.1	4,283.8	9.5	9.3	19.38	-60.9	-46.3	68.4	49.7	18.69	3.660		
4,400.0	4,398.8	4,384.5	4,375.4	9.6	9.6	14.36	-86.4	-53.1	82.0	63.0	18.94	4.328		
4,500.0	4,497.1	4,479.2	4,465.0	9.8	9.8	10.59	-116.2	-61.1	95.6	76.5	19.14	4.995		
4,600.0	4,594.3	4,573.2	4,552.3	10.0	10.1	7.59	-149.9	-70.2	109.2	89.9	19.31	5.656		
4,700.0	4,690.2	4,666.6	4,637.2	10.3	10.5	5.11	-187.4	-80.2	122.7	103.2	19.44	6.309		
4,800.0	4,784.4	4,759.4	4,719.5	10.5	10.9	2.98	-228.6	-91.3	135.9	116.4	19.54	6.954		
4,900.0	4,876.8	4,854.4	4,801.9	10.9	11.5	1.08	-274.5	-103.6	148.5	128.9	19.63	7.566		
5,000.0	4,967.1	4,954.0	4,887.7	11.3	12.1	-0.63	-323.2	-116.6	157.0	137.3	19.71	7.962		
5,100.0	5,054.9	5,053.8	4,973.8	11.8	12.7	-2.23	-372.0	-129.8	160.3	140.5	19.79	8.101		

CC - Min centre to center distance or convergent point, SF - min separation factor, ES - min ellipse separation

Company:	Great Western	Local Co-ordinate Reference:	Well Postle LC 11-239HN
Project:	SEC.11-T3N-R68W	TVD Reference:	WELL @ 4993.4ft (RKB - 16.5')
Reference Site:	Postle West Pad Sec.11-T3N-R68W	MD Reference:	WELL @ 4993.4ft (RKB - 16.5')
Site Error:	0.0ft	North Reference:	True
Reference Well:	Postle LC 11-239HN	Survey Calculation Method:	Minimum Curvature
Well Error:	0.0ft	Output errors are at	2.00 sigma
Reference Wellbore	Wellbore #1	Database:	Landmark
Reference Design:	Plan #1 (12-10-13)	Offset TVD Reference:	Offset Datum

Offset Design Postle West Pad Sec.11-T3N-R68W - Postle LC 11-259HC - Wellbore #1 - Plan #1 (12-10-13)													Offset Site Error:	0.0ft
Survey Program: 0-MWD													Offset Well Error:	0.0ft
Reference		Offset		Semi Major Axis			Distance						Warning	
Measured Depth (ft)	Vertical Depth (ft)	Measured Depth (ft)	Vertical Depth (ft)	Reference (ft)	Offset (ft)	Highside Toolface (°)	Offset Wellbore Centre +N/-S (ft)	+E/-W (ft)	Between Centres (ft)	Between Ellipses (ft)	Minimum Separation (ft)	Separation Factor		
5,200.0	5,141.2	5,153.7	5,059.9	12.3	13.4	-3.84	-420.9	-142.9	160.5	140.3	20.25	7.929		
5,300.0	5,227.5	5,253.6	5,146.0	12.9	14.1	-5.44	-469.8	-156.0	160.8	140.0	20.79	7.735		
5,400.0	5,313.8	5,353.5	5,232.1	13.6	14.9	-7.04	-518.7	-169.1	161.3	139.9	21.38	7.543		
5,500.0	5,400.0	5,453.4	5,318.2	14.3	15.7	-8.63	-567.6	-182.2	161.8	139.8	22.01	7.353		
5,600.0	5,486.3	5,553.3	5,404.4	15.0	16.5	-10.21	-616.5	-195.3	162.5	139.8	22.69	7.164		
5,700.0	5,572.6	5,653.2	5,490.5	15.8	17.3	-11.77	-665.4	-208.4	163.3	139.9	23.41	6.976		
5,800.0	5,658.8	5,753.1	5,576.6	16.6	18.1	-13.32	-714.3	-221.6	164.3	140.1	24.20	6.789		
5,900.0	5,745.1	5,853.0	5,662.7	17.4	19.0	-14.84	-763.2	-234.7	165.3	140.3	25.04	6.602		
6,000.0	5,831.4	5,952.9	5,748.8	18.2	19.9	-16.35	-812.1	-247.8	166.5	140.5	25.94	6.417		
6,100.0	5,917.6	6,052.8	5,835.0	19.0	20.7	-17.84	-861.0	-260.9	167.7	140.8	26.91	6.234		
6,200.0	6,003.9	6,152.7	5,921.1	19.9	21.6	-19.30	-909.9	-274.0	169.1	141.2	27.94	6.054		
6,300.0	6,090.2	6,252.6	6,007.2	20.7	22.5	-20.74	-958.8	-287.1	170.6	141.6	29.04	5.877		
6,400.0	6,176.5	6,352.5	6,093.3	21.6	23.4	-22.15	-1,007.7	-300.3	172.2	142.0	30.20	5.703		
6,500.0	6,262.7	6,452.4	6,179.5	22.5	24.3	-23.53	-1,056.6	-313.4	173.9	142.5	31.43	5.535		
6,600.0	6,349.0	6,552.3	6,265.6	23.4	25.3	-24.89	-1,105.5	-326.5	175.7	143.0	32.72	5.372		
6,700.0	6,435.3	6,652.2	6,351.7	24.3	26.2	-26.22	-1,154.3	-339.6	177.6	143.6	34.07	5.214		
6,800.0	6,521.5	6,752.1	6,437.8	25.2	27.1	-27.52	-1,203.2	-352.7	179.6	144.2	35.48	5.063		
6,900.0	6,607.8	6,852.0	6,523.9	26.1	28.0	-28.79	-1,252.1	-365.8	181.7	144.8	36.95	4.918		
7,000.0	6,694.1	6,951.9	6,610.1	27.0	29.0	-30.03	-1,301.0	-379.0	183.9	145.4	38.47	4.780		
7,100.0	6,781.3	7,051.5	6,695.9	27.8	29.9	-31.46	-1,349.8	-392.0	184.0	145.6	38.37	4.796		
7,199.6	6,867.4	7,146.9	6,778.2	28.4	30.8	-32.53	-1,398.5	-404.6	182.3	146.2	36.05	5.056		
7,200.0	6,867.7	7,147.2	6,778.5	28.4	30.8	-32.63	-1,396.6	-404.6	182.3	146.2	36.04	5.057		
7,300.0	6,948.9	7,234.2	6,853.5	28.9	31.6	-33.12	-1,439.2	-416.0	188.4	153.5	34.82	5.410		
7,400.0	7,020.8	7,319.2	6,927.0	29.2	32.3	-33.04	-1,481.0	-424.8	214.0	178.7	35.28	6.065		
7,500.0	7,079.6	7,428.5	7,021.3	29.5	33.1	-33.73	-1,534.5	-414.4	255.7	220.5	35.17	7.269		
7,600.0	7,122.3	7,576.7	7,140.1	29.6	34.0	-34.92	-1,601.8	-358.6	303.0	269.6	33.37	9.081		
7,700.0	7,146.8	7,798.4	7,272.1	29.6	34.7	-34.51	-1,676.3	-200.0	342.0	310.9	31.14	10.985		
7,800.0	7,152.4	8,048.5	7,321.4	29.6	35.0	-34.51	-1,703.8	40.4	353.4	320.9	32.49	10.877		
7,900.0	7,152.4	8,148.5	7,321.4	29.7	35.1	-34.51	-1,703.5	140.4	353.4	318.7	34.69	10.188		
8,000.0	7,152.4	8,248.5	7,321.4	29.9	35.3	-34.51	-1,703.3	240.4	353.4	316.0	37.41	9.447		
8,100.0	7,152.4	8,348.5	7,321.4	30.4	35.7	-34.51	-1,703.1	340.4	353.4	312.9	40.57	8.713		
8,200.0	7,152.4	8,448.5	7,321.4	31.3	36.3	-34.51	-1,702.8	440.4	353.4	309.4	44.06	8.022		
8,300.0	7,152.4	8,548.5	7,321.4	32.5	37.1	-34.51	-1,702.6	540.4	353.5	305.6	47.82	7.392		
8,400.0	7,152.4	8,648.5	7,321.4	34.1	38.2	-34.51	-1,702.4	640.4	353.5	301.7	51.78	6.826		
8,500.0	7,152.4	8,748.5	7,321.4	36.0	39.6	-34.51	-1,702.1	740.4	353.5	297.6	55.91	6.322		
8,600.0	7,152.4	8,848.5	7,321.4	38.0	41.2	-34.51	-1,701.9	840.4	353.5	293.3	60.17	5.875		
8,700.0	7,152.4	8,948.5	7,321.4	40.2	43.1	-34.51	-1,701.7	940.4	353.5	288.9	64.53	5.478		
8,800.0	7,152.4	9,048.5	7,321.4	42.5	45.1	-34.51	-1,701.4	1,040.4	353.5	284.5	68.98	5.125		
8,900.0	7,152.4	9,148.5	7,321.4	44.9	47.2	-34.51	-1,701.2	1,140.4	353.5	280.0	73.49	4.810		
9,000.0	7,152.4	9,248.5	7,321.4	47.3	49.4	-34.51	-1,701.0	1,240.4	353.5	275.4	78.07	4.528		
9,100.0	7,152.4	9,348.5	7,321.4	49.8	51.7	-34.51	-1,700.7	1,340.4	353.5	270.8	82.69	4.275		
9,200.0	7,152.4	9,448.5	7,321.4	52.3	54.1	-34.51	-1,700.5	1,440.4	353.5	266.2	87.35	4.047		
9,300.0	7,152.4	9,548.5	7,321.4	54.8	56.5	-34.51	-1,700.2	1,540.4	353.5	261.5	92.04	3.841		
9,400.0	7,152.4	9,648.5	7,321.4	57.4	59.0	-34.51	-1,700.0	1,640.4	353.5	256.8	96.76	3.654		
9,500.0	7,152.4	9,748.5	7,321.4	60.0	61.5	-34.51	-1,699.8	1,740.4	353.5	252.0	101.51	3.483		
9,600.0	7,152.4	9,848.5	7,321.4	62.6	64.0	-34.51	-1,699.5	1,840.4	353.5	247.3	106.28	3.326		
9,700.0	7,152.4	9,948.5	7,321.4	65.2	66.5	-34.51	-1,699.3	1,940.4	353.6	242.5	111.07	3.183		
9,800.0	7,152.4	10,048.5	7,321.4	67.9	69.1	-34.51	-1,699.1	2,040.4	353.6	237.7	115.88	3.051		
9,900.0	7,152.4	10,148.5	7,321.4	70.5	71.7	-34.51	-1,698.8	2,140.4	353.6	232.9	120.70	2.929		
10,000.0	7,152.4	10,248.5	7,321.4	73.2	74.3	-34.51	-1,698.6	2,240.4	353.6	228.0	125.53	2.817		
10,100.0	7,152.4	10,348.5	7,321.4	75.8	76.9	-34.51	-1,698.4	2,340.4	353.6	223.2	130.37	2.712		
10,200.0	7,152.4	10,448.5	7,321.4	78.5	79.6	-34.51	-1,698.1	2,440.4	353.6	218.4	135.23	2.615		

CC - Min centre to center distance or covergent point, SF - min separation factor, ES - min ellipse separation

Company:	Great Western	Local Co-ordinate Reference:	Well Postle IC 11-239HN
Project:	SEC.11-T3N-R68W	TVD Reference:	WELL @ 4993.4ft (RKB - 16.5')
Reference Site:	Postle West Pad Sec.11-T3N-R68W	MD Reference:	WELL @ 4993.4ft (RKB - 16.5')
Site Error:	0.0ft	North Reference:	True
Reference Well:	Postle IC 11-239HN	Survey Calculation Method:	Minimum Curvature
Well Error:	0.0ft	Output errors are at	2.00 sigma
Reference Wellbore	Wellbore #1	Database:	Landmark
Reference Design:	Plan #1 (12-10-13)	Offset TVD Reference:	Offset Datum

Offset Design													Postle West Pad Sec.11-T3N-R68W - Postle LC 11-259HC - Wellbore #1 - Plan #1 (12-10-13)	Offset Site Error:	0.0 ft
Survey Program: 0-MWD														Offset Well Error:	0.0 ft
Reference		Offset		Semi Major Axis			Distance						Warning		
Measured Depth (ft)	Vertical Depth (ft)	Measured Depth (ft)	Vertical Depth (ft)	Reference (ft)	Offset (ft)	Highside Toolface (°)	Offset Wellbore Centre +N/-S (ft)	+E/-W (ft)	Between Centres (ft)	Between Ellipses (ft)	Minimum Separation (ft)	Separation Factor			
10,300.0	7,152.4	10,548.5	7,321.4	81.2	82.2	118.55	-1,697.9	2,540.4	353.6	213.5	140.09	2.524			
10,400.0	7,152.4	10,648.5	7,321.4	83.9	84.9	118.55	-1,697.7	2,640.4	353.6	208.6	144.96	2.439			
10,500.0	7,152.4	10,748.5	7,321.4	86.6	87.6	118.55	-1,697.4	2,740.4	353.6	203.8	149.84	2.360			
10,600.0	7,152.4	10,848.5	7,321.4	89.3	90.2	118.55	-1,697.2	2,840.4	353.6	198.9	154.72	2.285			
10,700.0	7,152.4	10,948.5	7,321.4	92.0	92.9	118.55	-1,697.0	2,940.4	353.6	194.0	159.62	2.215			
10,800.0	7,152.4	11,048.5	7,321.4	94.8	95.6	118.55	-1,696.7	3,040.4	353.6	189.1	164.51	2.150			
10,900.0	7,152.4	11,148.5	7,321.4	97.5	98.3	118.55	-1,696.5	3,140.4	353.6	184.2	169.42	2.087			
11,000.0	7,152.4	11,248.5	7,321.4	100.2	101.0	118.55	-1,696.2	3,240.4	353.6	179.3	174.32	2.029			
11,100.0	7,152.4	11,348.5	7,321.4	103.0	103.7	118.55	-1,696.0	3,340.4	353.7	174.4	179.23	1.973			
11,200.0	7,152.4	11,448.5	7,321.4	105.7	106.5	118.55	-1,695.8	3,440.4	353.7	169.5	184.15	1.920			
11,300.0	7,152.4	11,548.5	7,321.4	108.4	109.2	118.55	-1,695.5	3,540.4	353.7	164.6	189.07	1.871			
11,400.0	7,152.4	11,648.5	7,321.4	111.2	111.9	118.54	-1,695.3	3,640.4	353.7	159.7	193.99	1.823			
11,500.0	7,152.4	11,748.5	7,321.4	113.9	114.6	118.54	-1,695.1	3,740.4	353.7	154.8	198.92	1.778			
11,600.0	7,152.4	11,848.5	7,321.4	116.7	117.4	118.54	-1,694.8	3,840.4	353.7	149.8	203.84	1.735			
11,700.0	7,152.4	11,948.5	7,321.4	119.4	120.1	118.54	-1,694.6	3,940.4	353.7	144.9	208.78	1.694			
11,800.0	7,152.4	12,048.5	7,321.4	122.2	122.8	118.54	-1,694.4	4,040.4	353.7	140.0	213.71	1.655			
11,900.0	7,152.4	12,148.5	7,321.4	124.9	125.6	118.54	-1,694.1	4,140.4	353.7	135.1	218.65	1.618			
12,000.0	7,152.4	12,248.5	7,321.4	127.7	128.3	118.54	-1,693.9	4,240.4	353.7	130.1	223.58	1.582			
12,100.0	7,152.4	12,348.5	7,321.4	130.5	130.6	118.54	-1,693.7	4,340.4	353.7	125.6	228.09	1.551			
12,109.0	7,152.4	12,357.5	7,321.4	130.6	130.8	118.54	-1,693.6	4,349.4	353.7	125.3	228.37	1.549			
12,123.4	7,152.4	12,369.5	7,321.4	130.9	131.0	118.54	-1,693.6	4,361.4	353.7	124.9	228.79	1.546 SF			

Company:	Great Western	Local Co-ordinate Reference:	Well Postle LC 11-239HN
Project:	SEC.11-T3N-R68W	TVD Reference:	WELL @ 4993.4ft (RKB - 16.5')
Reference Site:	Postle West Pad Sec.11-T3N-R68W	MD Reference:	WELL @ 4993.4ft (RKB - 16.5')
Site Error:	0.0ft	North Reference:	True
Reference Well:	Postle LC 11-239HN	Survey Calculation Method:	Minimum Curvature
Well Error:	0.0ft	Output errors are at	2.00 sigma
Reference Wellbore	Wellbore #1	Database:	Landmark
Reference Design:	Plan #1 (12-10-13)	Offset TVD Reference:	Offset Datum

Offset Design Postle West Pad Sec.11-T3N-R68W - Postle LC 11-279HN - Wellbore #1 - Plan #1 (12-10-13)													Offset Site Error:	0.0ft
Survey Program: 0-MWD													Offset Well Error:	0.0ft
Reference				Offset			Semi Major Axis			Distance			Warning	
Measured Depth (ft)	Vertical Depth (ft)	Measured Depth (ft)	Vertical Depth (ft)	Reference (ft)	Offset (ft)	Highside Tooface (°)	Offset Wellbore Centre +N/-S (ft)	+E/-W (ft)	Between Centres (ft)	Between Ellipses (ft)	Minimum Separation (ft)	Separation Factor		
0.0	0.0	0.0	0.0	0.0	0.0	-91.75	-1.8	-59.7	59.8					
100.0	100.0	100.0	100.0	0.1	0.1	-91.75	-1.8	-59.7	59.8	59.5	0.22	265.917		
200.0	200.0	200.0	200.0	0.3	0.3	-91.75	-1.8	-59.7	59.8	59.1	0.67	88.639		
300.0	300.0	300.0	300.0	0.6	0.6	-91.75	-1.8	-59.7	59.8	58.6	1.12	53.183		
400.0	400.0	400.0	400.0	0.8	0.8	-91.75	-1.8	-59.7	59.8	58.2	1.57	37.988		
500.0	500.0	500.0	500.0	1.0	1.0	-91.75	-1.8	-59.7	59.8	57.7	2.02	29.546		
600.0	600.0	600.0	600.0	1.2	1.2	-91.75	-1.8	-59.7	59.8	57.3	2.47	24.174		
700.0	700.0	700.0	700.0	1.5	1.5	-91.75	-1.8	-59.7	59.8	56.8	2.92	20.455		
800.0	800.0	800.0	800.0	1.7	1.7	-91.75	-1.8	-59.7	59.8	56.4	3.37	17.728		
900.0	900.0	900.0	900.0	1.9	1.9	-91.75	-1.8	-59.7	59.8	55.9	3.82	15.642		
1,000.0	1,000.0	1,000.0	1,000.0	2.1	2.1	-91.75	-1.8	-59.7	59.8	55.5	4.27	13.996		
1,100.0	1,100.0	1,100.0	1,100.0	2.4	2.4	-91.75	-1.8	-59.7	59.8	55.0	4.72	12.663		
1,200.0	1,200.0	1,200.0	1,200.0	2.6	2.6	-91.75	-1.8	-59.7	59.8	54.6	5.17	11.562		
1,300.0	1,300.0	1,300.0	1,300.0	2.8	2.8	-91.75	-1.8	-59.7	59.8	54.1	5.62	10.637		
1,400.0	1,400.0	1,400.0	1,400.0	3.0	3.0	-91.75	-1.8	-59.7	59.8	53.7	6.07	9.849		
1,500.0	1,500.0	1,500.0	1,500.0	3.3	3.3	-91.75	-1.8	-59.7	59.8	53.3	6.52	9.170		
1,600.0	1,600.0	1,600.0	1,600.0	3.5	3.5	-91.75	-1.8	-59.7	59.8	52.8	6.97	8.578		
1,700.0	1,700.0	1,700.0	1,700.0	3.7	3.7	-91.75	-1.8	-59.7	59.8	52.4	7.42	8.058		
1,800.0	1,800.0	1,800.0	1,800.0	3.9	3.9	-91.75	-1.8	-59.7	59.8	51.9	7.87	7.598		
1,900.0	1,900.0	1,900.0	1,900.0	4.2	4.2	-91.75	-1.8	-59.7	59.8	51.5	8.32	7.187		
2,000.0	2,000.0	2,000.0	2,000.0	4.4	4.4	-91.75	-1.8	-59.7	59.8	51.0	8.77	6.818		
2,100.0	2,100.0	2,100.0	2,100.0	4.6	4.6	-91.75	-1.8	-59.7	59.8	50.6	9.22	6.486		
2,200.0	2,200.0	2,200.0	2,200.0	4.8	4.8	-91.75	-1.8	-59.7	59.8	50.1	9.66	6.184		
2,300.0	2,300.0	2,300.0	2,300.0	5.1	5.1	-91.75	-1.8	-59.7	59.8	49.7	10.11	5.909		
2,400.0	2,400.0	2,400.0	2,400.0	5.3	5.3	-91.75	-1.8	-59.7	59.8	49.2	10.56	5.658		
2,500.0	2,500.0	2,500.0	2,500.0	5.5	5.5	-91.75	-1.8	-59.7	59.8	48.8	11.01	5.427		
2,600.0	2,600.0	2,600.0	2,600.0	5.7	5.7	-91.75	-1.8	-59.7	59.8	48.3	11.46	5.214		
2,700.0	2,700.0	2,700.0	2,700.0	6.0	6.0	-91.75	-1.8	-59.7	59.8	47.9	11.91	5.017		
2,800.0	2,800.0	2,800.0	2,800.0	6.2	6.2	-91.75	-1.8	-59.7	59.8	47.4	12.36	4.835		
2,900.0	2,900.0	2,900.0	2,900.0	6.4	6.4	-91.75	-1.8	-59.7	59.8	47.0	12.81	4.665		
3,000.0	3,000.0	3,000.0	3,000.0	6.6	6.6	-91.75	-1.8	-59.7	59.8	46.5	13.26	4.507		
3,100.0	3,100.0	3,100.0	3,100.0	6.9	6.9	-91.75	-1.8	-59.7	59.8	46.1	13.71	4.359	CC, ES	
3,200.0	3,200.0	3,199.2	3,199.2	7.1	7.0	-94.12	-4.3	-60.3	60.4	46.3	14.13	4.276		
3,300.0	3,300.0	3,297.9	3,297.5	7.3	7.2	-100.86	-11.9	-61.8	63.0	48.4	14.52	4.336		
3,400.0	3,400.0	3,395.5	3,394.3	7.5	7.4	-110.60	-24.2	-64.3	68.9	54.0	14.92	4.621		
3,500.0	3,500.0	3,491.6	3,488.8	7.8	7.6	-121.20	-41.0	-67.7	80.0	64.7	15.32	5.221		
3,600.0	3,600.0	3,585.7	3,580.5	8.0	7.8	-130.73	-62.0	-72.0	97.0	81.3	15.72	6.173		
3,700.0	3,700.0	3,677.5	3,668.7	8.2	8.0	-138.38	-86.7	-77.0	120.1	104.0	16.11	7.456		
3,800.0	3,800.0	3,766.6	3,753.1	8.4	8.3	-144.18	-114.6	-82.7	149.0	132.4	16.51	9.022		
3,900.0	3,900.0	3,852.7	3,833.4	8.7	8.6	-148.51	-145.3	-89.0	182.9	166.0	16.91	10.821		
4,000.0	4,000.0	3,935.8	3,909.4	8.9	8.9	-151.76	-178.2	-95.7	221.6	204.3	17.30	12.809		
4,100.0	4,100.0	4,015.6	3,980.9	9.1	9.3	-154.23	-212.8	-102.7	264.6	246.9	17.70	14.949		
4,200.0	4,200.0	4,093.2	4,049.0	9.3	9.7	3.65	-249.2	-110.2	309.2	291.1	18.08	17.100		
4,300.0	4,299.6	4,181.5	4,125.4	9.5	10.3	1.96	-292.6	-119.0	351.6	333.2	18.40	19.109		
4,400.0	4,398.8	4,273.7	4,205.1	9.6	10.9	0.65	-338.0	-128.3	389.5	370.8	18.70	20.826		
4,500.0	4,497.1	4,367.8	4,286.5	9.8	11.6	-0.42	-384.3	-137.7	422.6	403.7	18.99	22.260		
4,600.0	4,594.3	4,463.4	4,369.2	10.0	12.3	-1.34	-431.3	-147.3	450.9	431.7	19.25	23.420		
4,700.0	4,690.2	4,560.4	4,453.1	10.3	13.0	-2.16	-479.0	-157.0	474.2	454.7	19.50	24.315		
4,800.0	4,784.4	4,658.5	4,537.9	10.5	13.8	-2.93	-527.3	-166.9	492.5	472.8	19.74	24.954		
4,900.0	4,876.8	4,757.4	4,623.5	10.9	14.6	-3.68	-575.9	-176.8	505.7	485.8	19.95	25.343		
5,000.0	4,967.1	4,856.8	4,709.4	11.3	15.5	-4.44	-624.8	-186.7	513.8	493.7	20.16	25.489		
5,100.0	5,054.9	4,956.5	4,795.7	11.8	16.3	-5.24	-673.9	-196.7	516.8	496.5	20.35	25.395		

CC - Min centre to center distance or convergent point, SF - min separation factor, ES - min ellipse separation

Company:	Great Western	Local Co-ordinate Reference:	Well Postle LC 11-239HN
Project:	SEC.11-T3N-R68W	TVD Reference:	WELL @ 4993.4ft (RKB - 16.5')
Reference Site:	Postle West Pad Sec.11-T3N-R68W	MD Reference:	WELL @ 4993.4ft (RKB - 16.5')
Site Error:	0.0ft	North Reference:	True
Reference Well:	Postle LC 11-239HN	Survey Calculation Method:	Minimum Curvature
Well Error:	0.0ft	Output errors are at	2.00 sigma
Reference Wellbore	Wellbore #1	Database:	Landmark
Reference Design:	Plan #1 (12-10-13)	Offset TVD Reference:	Offset Datum

Offset Design Postle West Pad Sec.11-T3N-R68W - Postle LC 11-279HN - Wellbore #1 - Plan #1 (12-10-13)													Offset Site Error:	0.0 ft
Survey Program: 0-MWD													Offset Well Error:	0.0 ft
Reference		Offset		Semi Major Axis			Distance						Warning	
Measured Depth (ft)	Vertical Depth (ft)	Measured Depth (ft)	Vertical Depth (ft)	Reference (ft)	Offset (ft)	Highside Toolface (°)	Offset Wellbore Centre +N/-S (ft)	+E/-W (ft)	Between Centres (ft)	Between Ellipses (ft)	Minimum Separation (ft)	Separation Factor		
5,200.0	5,141.2	5,056.2	4,881.9	12.3	17.2	-6.08	-722.9	-206.7	516.7	495.8	20.88	24.747		
5,299.8	5,227.3	5,155.7	4,967.9	12.9	18.0	-6.91	-771.9	-216.7	516.6	495.1	21.48	24.055		
5,300.0	5,227.5	5,155.9	4,968.1	12.9	18.1	-6.92	-772.0	-216.7	516.6	495.1	21.48	24.053		
5,400.0	5,313.8	5,255.6	5,054.4	13.6	18.9	-7.75	-821.0	-226.7	516.7	494.6	22.10	23.375		
5,500.0	5,400.0	5,355.3	5,140.6	14.3	19.8	-8.59	-870.1	-236.7	516.8	494.1	22.76	22.713		
5,600.0	5,486.3	5,455.1	5,226.8	15.0	20.7	-9.43	-919.2	-246.7	517.1	493.7	23.43	22.067		
5,700.0	5,572.6	5,554.8	5,313.1	15.8	21.6	-10.26	-968.2	-256.7	517.5	493.4	24.14	21.438		
5,800.0	5,658.8	5,654.5	5,399.3	16.6	22.6	-11.10	-1,017.3	-266.7	518.0	493.1	24.88	20.824		
5,900.0	5,745.1	5,754.2	5,485.5	17.4	23.5	-11.93	-1,066.3	-276.7	518.6	493.0	25.64	20.226		
6,000.0	5,831.4	5,853.9	5,571.8	18.2	24.4	-12.76	-1,115.4	-286.7	519.3	492.9	26.44	19.644		
6,100.0	5,917.6	5,953.6	5,658.0	19.0	25.3	-13.59	-1,164.4	-296.7	520.2	492.9	27.27	19.078		
6,200.0	6,003.9	6,053.3	5,744.2	19.9	26.2	-14.41	-1,213.5	-306.7	521.1	493.0	28.13	18.527		
6,300.0	6,090.2	6,153.0	5,830.5	20.7	27.2	-15.23	-1,262.5	-316.7	522.1	493.1	29.02	17.992		
6,400.0	6,176.5	6,252.8	5,916.7	21.6	28.1	-16.05	-1,311.6	-326.7	523.3	493.3	29.95	17.472		
6,500.0	6,262.7	6,352.5	6,002.9	22.5	29.1	-16.86	-1,360.6	-336.7	524.6	493.6	30.91	16.968		
6,600.0	6,349.0	6,452.2	6,089.2	23.4	30.0	-17.67	-1,409.7	-346.7	525.9	494.0	31.91	16.478		
6,700.0	6,435.3	6,551.9	6,175.4	24.3	30.9	-18.48	-1,458.8	-356.7	527.4	494.4	32.95	16.006		
6,800.0	6,521.5	6,651.6	6,261.6	25.2	31.9	-19.28	-1,507.8	-366.7	529.0	494.9	34.02	15.548		
6,900.0	6,607.8	6,751.3	6,347.9	26.1	32.8	-20.08	-1,556.9	-376.7	530.6	495.5	35.13	15.105		
7,000.0	6,694.1	6,851.0	6,434.1	27.0	33.8	-20.87	-1,605.9	-386.7	532.4	496.1	36.28	14.677		
7,100.0	6,781.3	6,950.8	6,520.4	27.8	34.7	1.00	-1,655.0	-396.7	533.7	496.7	36.96	14.441		
7,200.0	6,867.7	7,047.4	6,603.9	28.4	35.6	24.99	-1,702.5	-406.4	534.3	497.5	36.82	14.513		
7,300.0	6,948.9	7,135.8	6,680.4	28.9	36.5	44.11	-1,746.0	-415.3	537.3	500.7	36.63	14.669		
7,400.0	7,020.8	7,217.4	6,751.0	29.2	37.2	57.81	-1,786.2	-422.8	547.4	510.5	36.88	14.843		
7,500.0	7,079.6	7,324.3	6,843.4	29.5	38.0	68.71	-1,838.7	-414.9	566.0	528.5	37.48	15.101		
7,600.0	7,122.3	7,470.1	6,961.5	29.6	39.0	78.15	-1,905.7	-363.6	590.2	552.0	38.17	15.464		
7,700.0	7,146.8	7,693.0	7,098.0	29.6	39.9	86.84	-1,983.0	-208.5	612.8	574.0	38.81	15.789		
7,800.0	7,152.4	7,953.9	7,152.4	29.6	40.3	90.00	-2,013.4	41.0	620.1	578.9	41.13	15.077		
7,900.0	7,152.4	8,053.9	7,152.4	29.7	40.5	90.00	-2,013.2	141.0	620.1	576.5	43.57	14.230		
8,000.0	7,152.4	8,153.9	7,152.4	29.9	40.7	90.00	-2,013.0	241.0	620.1	573.5	46.56	13.319		
8,100.0	7,152.4	8,253.9	7,152.4	30.4	41.0	90.00	-2,012.8	341.0	620.1	570.1	49.99	12.404		
8,200.0	7,152.4	8,353.9	7,152.4	31.3	41.5	90.00	-2,012.6	441.0	620.2	566.4	53.80	11.527		
8,300.0	7,152.4	8,453.9	7,152.4	32.5	42.1	90.00	-2,012.3	541.0	620.2	562.3	57.90	10.712		
8,400.0	7,152.4	8,553.9	7,152.4	34.1	43.0	90.00	-2,012.1	641.0	620.2	558.0	62.23	9.966		
8,500.0	7,152.4	8,653.9	7,152.4	36.0	44.0	90.00	-2,011.9	741.0	620.2	553.5	66.76	9.291		
8,600.0	7,152.4	8,753.9	7,152.4	38.0	45.3	90.00	-2,011.7	841.0	620.2	548.8	71.44	8.683		
8,700.0	7,152.4	8,853.9	7,152.4	40.2	46.8	90.00	-2,011.5	941.0	620.3	544.0	76.24	8.136		
8,800.0	7,152.4	8,953.9	7,152.4	42.5	48.4	90.00	-2,011.3	1,041.0	620.3	539.1	81.15	7.644		
8,900.0	7,152.4	9,053.9	7,152.4	44.9	50.2	90.00	-2,011.0	1,141.0	620.3	534.2	86.14	7.201		
9,000.0	7,152.4	9,153.9	7,152.4	47.3	52.2	90.00	-2,010.8	1,241.0	620.3	529.1	91.21	6.801		
9,100.0	7,152.4	9,253.9	7,152.4	49.8	54.3	90.00	-2,010.6	1,341.0	620.4	524.0	96.34	6.440		
9,200.0	7,152.4	9,353.9	7,152.4	52.3	56.4	90.00	-2,010.4	1,441.0	620.4	518.9	101.51	6.111		
9,300.0	7,152.4	9,453.9	7,152.4	54.8	58.7	90.00	-2,010.2	1,541.0	620.4	513.7	106.74	5.813		
9,400.0	7,152.4	9,553.9	7,152.4	57.4	61.0	90.00	-2,009.9	1,641.0	620.4	508.5	111.99	5.540		
9,500.0	7,152.4	9,653.9	7,152.4	60.0	63.4	90.00	-2,009.7	1,741.0	620.5	503.2	117.29	5.290		
9,600.0	7,152.4	9,753.9	7,152.4	62.6	65.8	90.00	-2,009.5	1,841.0	620.5	497.9	122.61	5.061		
9,700.0	7,152.4	9,853.9	7,152.4	65.2	68.3	90.00	-2,009.3	1,941.0	620.5	492.6	127.95	4.850		
9,800.0	7,152.4	9,953.9	7,152.4	67.9	70.7	90.00	-2,009.1	2,041.0	620.5	487.2	133.32	4.655		
9,900.0	7,152.4	10,053.9	7,152.4	70.5	73.3	90.00	-2,008.8	2,141.0	620.6	481.9	138.70	4.474		
10,000.0	7,152.4	10,153.9	7,152.4	73.2	75.8	90.00	-2,008.6	2,241.0	620.6	476.5	144.11	4.306		
10,100.0	7,152.4	10,253.9	7,152.4	75.8	78.4	90.00	-2,008.4	2,341.0	620.6	471.1	149.52	4.151		
10,200.0	7,152.4	10,353.9	7,152.4	78.5	80.9	90.00	-2,008.2	2,441.0	620.6	465.7	154.96	4.005		

CC - Min centre to center distance or convergent point, SF - min separation factor, ES - min ellipse separation

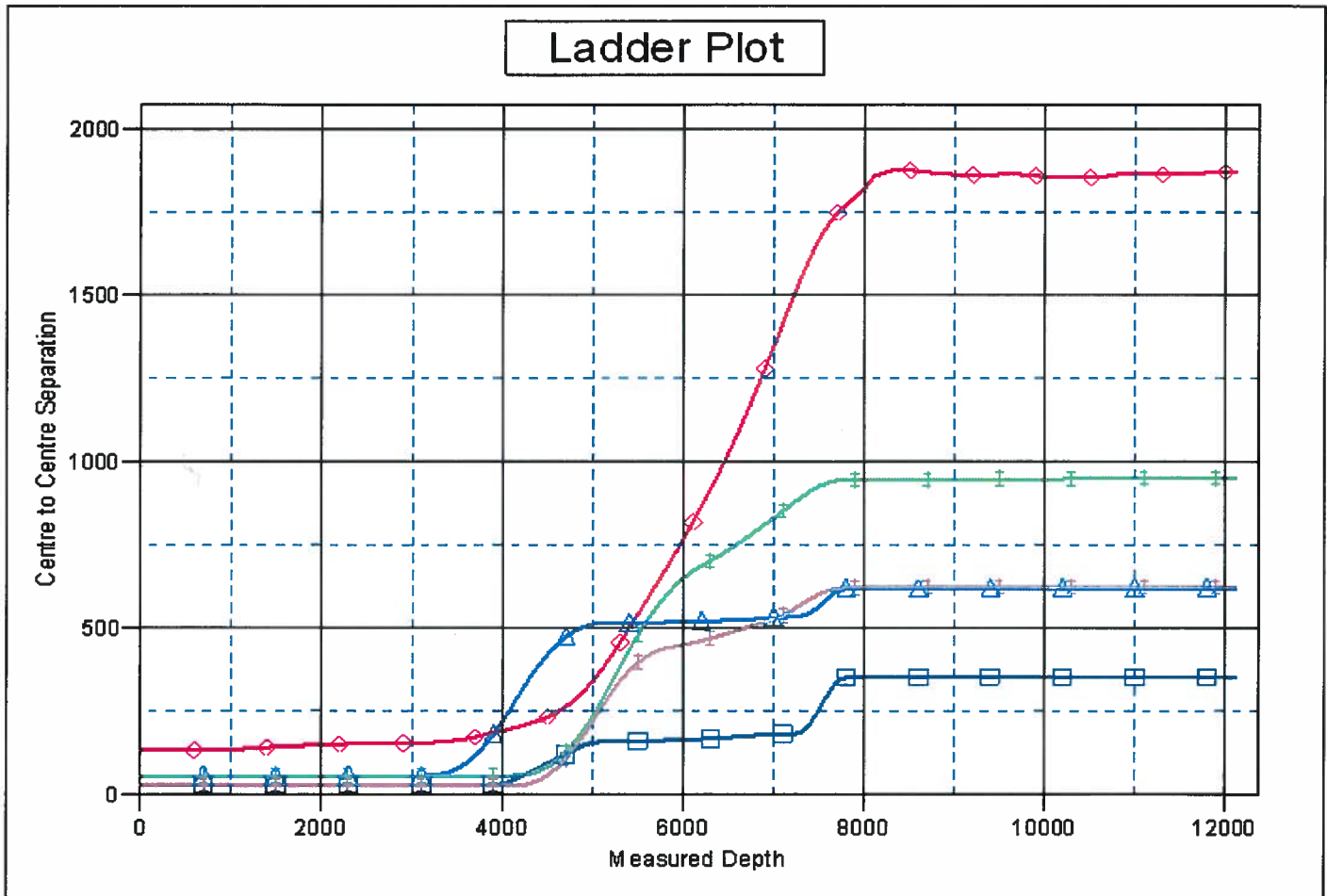
Company:	Great Western	Local Co-ordinate Reference:	Well Postle IC 11-239HN
Project:	SEC.11-T3N-R68W	TVD Reference:	WELL @ 4993.4ft (RKB - 16.5')
Reference Site:	Postle West Pad Sec.11-T3N-R68W	MD Reference:	WELL @ 4993.4ft (RKB - 16.5')
Site Error:	0.0ft	North Reference:	True
Reference Well:	Postle IC 11-239HN	Survey Calculation Method:	Minimum Curvature
Well Error:	0.0ft	Output errors are at	2.00 sigma
Reference Wellbore	Wellbore #1	Database:	Landmark
Reference Design:	Plan #1 (12-10-13)	Offset TVD Reference:	Offset Datum

Offset Design Postle West Pad Sec.11-T3N-R68W - Postle LC 11-279HN - Wellbore #1 - Plan #1 (12-10-13)											Offset Site Error:	0.0ft
Survey Program: 0-MWD											Offset Well Error:	0.0ft
Reference		Offset		Semi Major Axis			Distance				Warning	
Measured Depth (ft)	Vertical Depth (ft)	Measured Depth (ft)	Vertical Depth (ft)	Reference (ft)	Offset (ft)	Highside Toolface (°)	Offset Wellbore Centre +N/-S (ft)	+E/-W (ft)	Between Centres (ft)	Between Ellipses (ft)		Minimum Separation (ft)
10,300.0	7,152.4	10,453.9	7,152.4	81.2	83.5	90.00	-2,008.0	2,541.0	620.7	460.3	160.40	3.869
10,400.0	7,152.4	10,553.9	7,152.4	83.9	86.2	90.00	-2,007.7	2,641.0	620.7	454.8	165.86	3.742
10,500.0	7,152.4	10,653.9	7,152.4	86.6	88.8	90.00	-2,007.5	2,741.0	620.7	449.4	171.32	3.623
10,600.0	7,152.4	10,753.9	7,152.4	89.3	91.4	90.00	-2,007.3	2,841.0	620.7	443.9	176.80	3.511
10,700.0	7,152.4	10,853.9	7,152.4	92.0	94.1	90.00	-2,007.1	2,941.0	620.8	438.5	182.28	3.406
10,800.0	7,152.4	10,953.9	7,152.4	94.8	96.7	90.00	-2,006.9	3,041.0	620.8	433.0	187.77	3.306
10,900.0	7,152.4	11,053.9	7,152.4	97.5	99.4	90.00	-2,006.7	3,141.0	620.8	427.5	193.27	3.212
11,000.0	7,152.4	11,153.9	7,152.4	100.2	102.1	90.00	-2,006.4	3,241.0	620.8	422.1	198.77	3.123
11,100.0	7,152.4	11,253.9	7,152.4	103.0	104.8	90.00	-2,006.2	3,341.0	620.9	416.6	204.28	3.039
11,200.0	7,152.4	11,353.9	7,152.4	105.7	107.4	90.00	-2,006.0	3,441.0	620.9	411.1	209.79	2.960
11,300.0	7,152.4	11,453.9	7,152.4	108.4	110.1	90.00	-2,005.8	3,541.0	620.9	405.6	215.31	2.884
11,400.0	7,152.4	11,553.9	7,152.4	111.2	112.8	90.00	-2,005.6	3,641.0	620.9	400.1	220.84	2.812
11,500.0	7,152.4	11,653.9	7,152.4	113.9	115.5	90.00	-2,005.3	3,741.0	621.0	394.6	226.37	2.743
11,600.0	7,152.4	11,753.9	7,152.4	116.7	118.3	90.00	-2,005.1	3,841.0	621.0	389.1	231.90	2.678
11,700.0	7,152.4	11,853.9	7,152.4	119.4	121.0	90.00	-2,004.9	3,941.0	621.0	383.6	237.44	2.616
11,800.0	7,152.4	11,953.9	7,152.4	122.2	123.7	90.00	-2,004.7	4,041.0	621.0	378.1	242.97	2.556
11,900.0	7,152.4	12,053.9	7,152.4	124.9	126.4	90.00	-2,004.5	4,141.0	621.1	372.5	248.52	2.499
12,000.0	7,152.4	12,153.9	7,152.4	127.7	129.1	90.00	-2,004.2	4,241.0	621.1	367.0	254.06	2.445
12,100.0	7,152.4	12,253.9	7,152.4	130.5	131.4	90.00	-2,004.0	4,341.0	621.1	362.0	259.08	2.397
12,107.7	7,152.4	12,261.6	7,152.4	130.6	131.6	90.00	-2,004.0	4,348.7	621.1	361.8	259.35	2.395
12,123.4	7,152.4	12,273.0	7,152.4	130.9	131.8	90.00	-2,004.0	4,360.1	621.1	361.3	259.83	2.391 SF

Company:	Great Western	Local Co-ordinate Reference:	Well Postle LC 11-239HN
Project:	SEC.11-T3N-R68W	TVD Reference:	WELL @ 4993.4ft (RKB - 16.5')
Reference Site:	Postle West Pad Sec.11-T3N-R68W	MD Reference:	WELL @ 4993.4ft (RKB - 16.5')
Site Error:	0.0ft	North Reference:	True
Reference Well:	Postle LC 11-239HN	Survey Calculation Method:	Minimum Curvature
Well Error:	0.0ft	Output errors are at	2.00 sigma
Reference Wellbore	Wellbore #1	Database:	Landmark
Reference Design:	Plan #1 (12-10-13)	Offset TVD Reference:	Offset Datum

Reference Depths are relative to WELL @ 4993.4ft (RKB - 16.5')
 Offset Depths are relative to Offset Datum
 Central Meridian is -105.500000 °

Coordinates are relative to: Postle LC 11-239HN
 Coordinate System is US State Plane 1983, Colorado Northern Zone
 Grid Convergence at Surface is: 0.34°

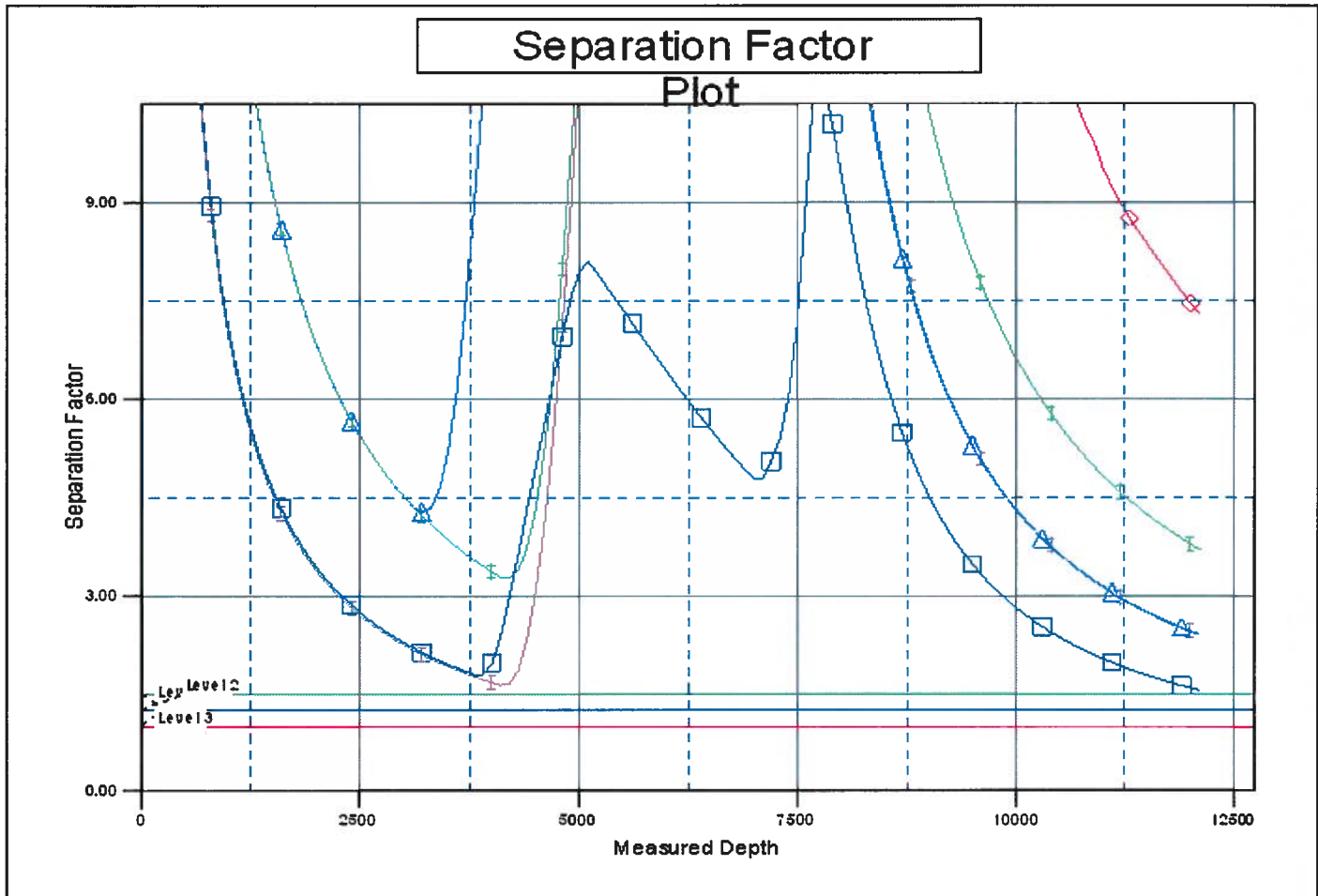


LEGEND

- 1-4HN, Wellbore #1, Wellbore #1 VD
- Postle LC 11-279HN, Wellbore #1, Plan #1 (12-10-13) VD
- Postle LC 11-162HN, Wellbore #1, Plan #1 (12-10-13) VD
- Postle LC 11-159HC, Wellbore #1, Plan #1 (12-10-13) VD

Company:	Great Western	Local Co-ordinate Reference:	Well Postle IC 11-239HN
Project:	SEC.11-T3N-R68W	TVD Reference:	WELL @ 4993.4ft (RKB - 16.5')
Reference Site:	Postle West Pad Sec.11-T3N-R68W	MD Reference:	WELL @ 4993.4ft (RKB - 16.5')
Site Error:	0.0ft	North Reference:	True
Reference Well:	Postle IC 11-239HN	Survey Calculation Method:	Minimum Curvature
Well Error:	0.0ft	Output errors are at	2.00 sigma
Reference Wellbore	Wellbore #1	Database:	Landmark
Reference Design:	Plan #1 (12-10-13)	Offset TVD Reference:	Offset Datum

Reference Depths are relative to WELL @ 4993.4ft (RKB - 16.5') Coordinates are relative to: Postle LC 11-239HN
 Offset Depths are relative to Offset Datum Coordinate System is US State Plane 1983, Colorado Northern Zone
 Central Meridian is -105.500000 ° Grid Convergence at Surface is: 0.34°



LEGEND

- 1-4HN, Wellbore #1, Wellbore #1 VD ▲ Postle LC 11-279HN, Wellbore #1, Plan #1 (12-10-13) VD ◆ Postle LC 11-162HN, Wellbore #1, Plan #1 (12-10-13) VD
- 11-259HC, Wellbore #1, Plan #1 (12-10-13) VD ▼ Postle LC 11-159HC, Wellbore #1, Plan #1 (12-10-13) VD