

# WPX Energy Rocky Mountain, LLC

PLAT #2 LOCATION LAYOUT FOR GM 24-12  
SECTION 12, T7S, R96W, 6th P.M.

SCALE: 1" = 60'

DATE: 05-08-13

DRAWN BY: B.D.H.

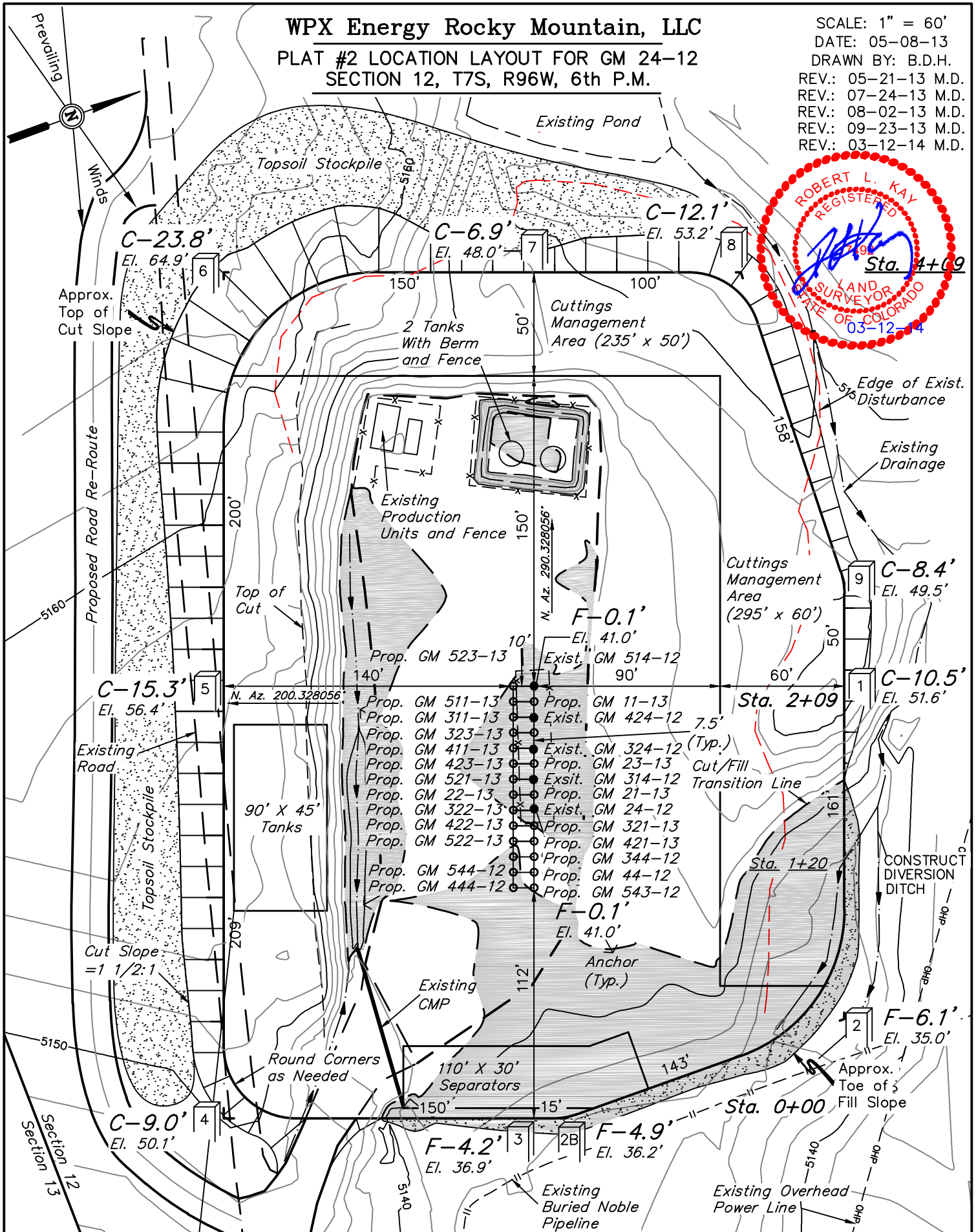
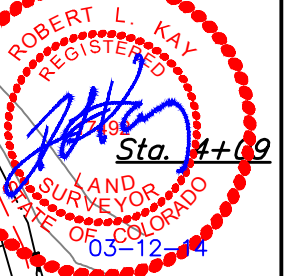
REV.: 05-21-13 M.D.

REV.: 07-24-13 M.D.

REV.: 08-02-13 M.D.

REV.: 09-23-13 M.D.

REV.: 03-12-14 M.D.



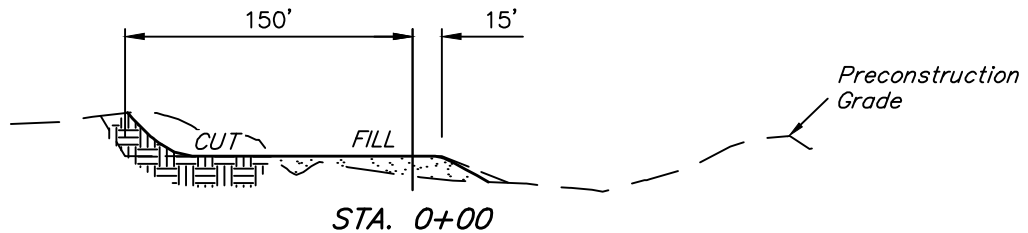
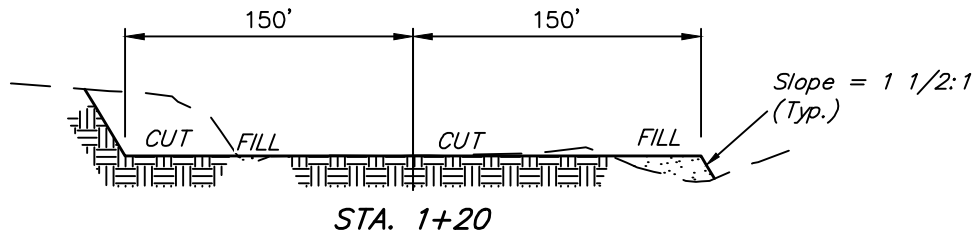
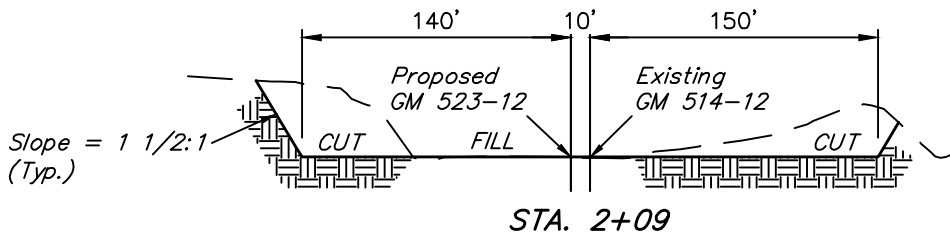
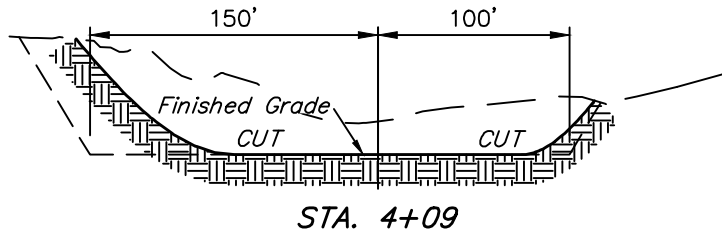
Existing Grade Elev. At GM 514-12 Location = 5141.0'  
FINISHED GRADE ELEV. AT GM 514-12 LOCATION = 5141.1'

UINTAH ENGINEERING & LAND SURVEYING  
85 So. 200 East \* Vernal, Utah 84078 \* (435) 789-1017

1" = 40'  
X-Section  
Scale  
1" = 100'

DATE: 05-08-13  
DRAWN BY: B.D.H.  
REV.: 05-21-13 M.D.  
REV.: 07-24-13 M.D.  
REV.: 10-31-13 M.D.

WPX Energy Rocky Mountain, LLC  
PLAT #3 TYPICAL CROSS SECTION FOR GM 24-12  
SECTION 12, T7S, R96W, 6th P.M.



NOTE:

Topsoil should not be Stripped Below Finished Grade on Substructure Area.

\* NOTE:  
FILL QUANTITY INCLUDES 5% FOR COMPACTION

APPROXIMATE YARDAGES

(6") Topsoil Stripping = 1,990 Cu. Yds.  
Remaining Location = 20,680 Cu. Yds.

TOTAL CUT = 22,670 CU. YDS.  
FILL = 2,680 CU. YDS.

EXCESS MATERIAL = 19,990 Cu. Yds.  
Topsoil = 1,990 Cu. Yds.  
EXCESS UNBALANCE (Before Rehabilitation) = 18,000 Cu. Yds.  
MATERIAL USED FOR CONSTRUCTION OF LAYDOWN YARD = 5,250 Cu. Yds.  
MATERIAL FOR RECLAMATION = 12,750 Cu. Yds.  
EXCESS UNBALANCE (After Rehabilitation) = 0 Cu. Yds.

UINTAH ENGINEERING & LAND SURVEYING  
85 So. 200 East \* Vernal, Utah 84078 \* (435) 789-1017