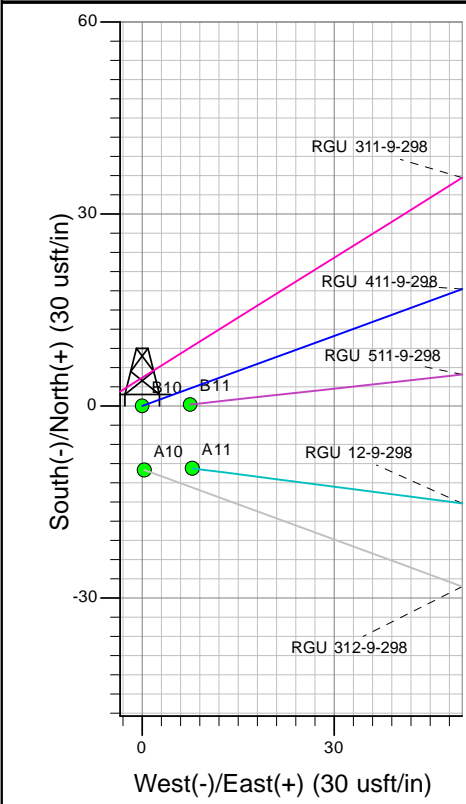
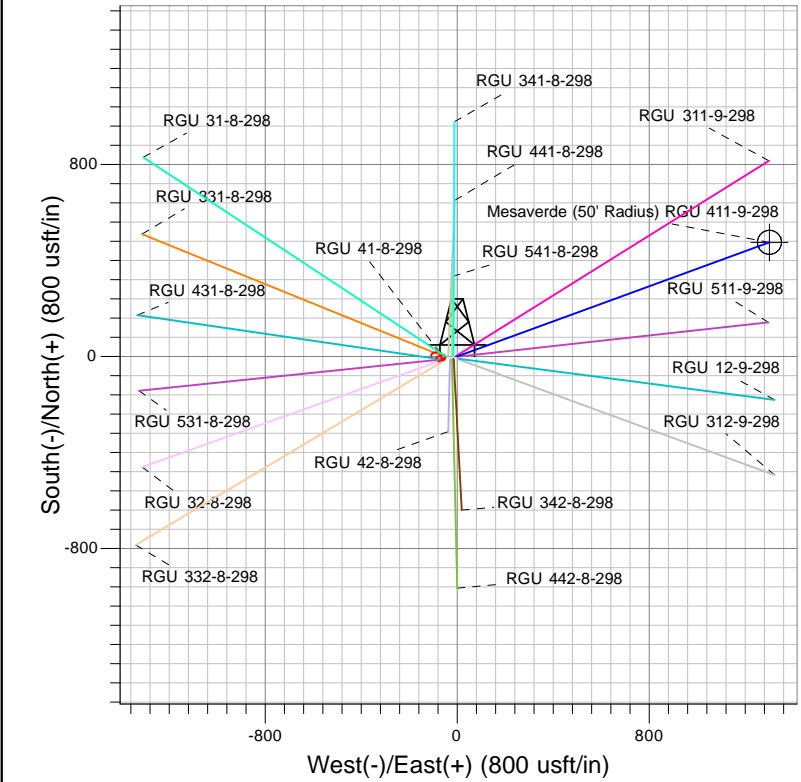
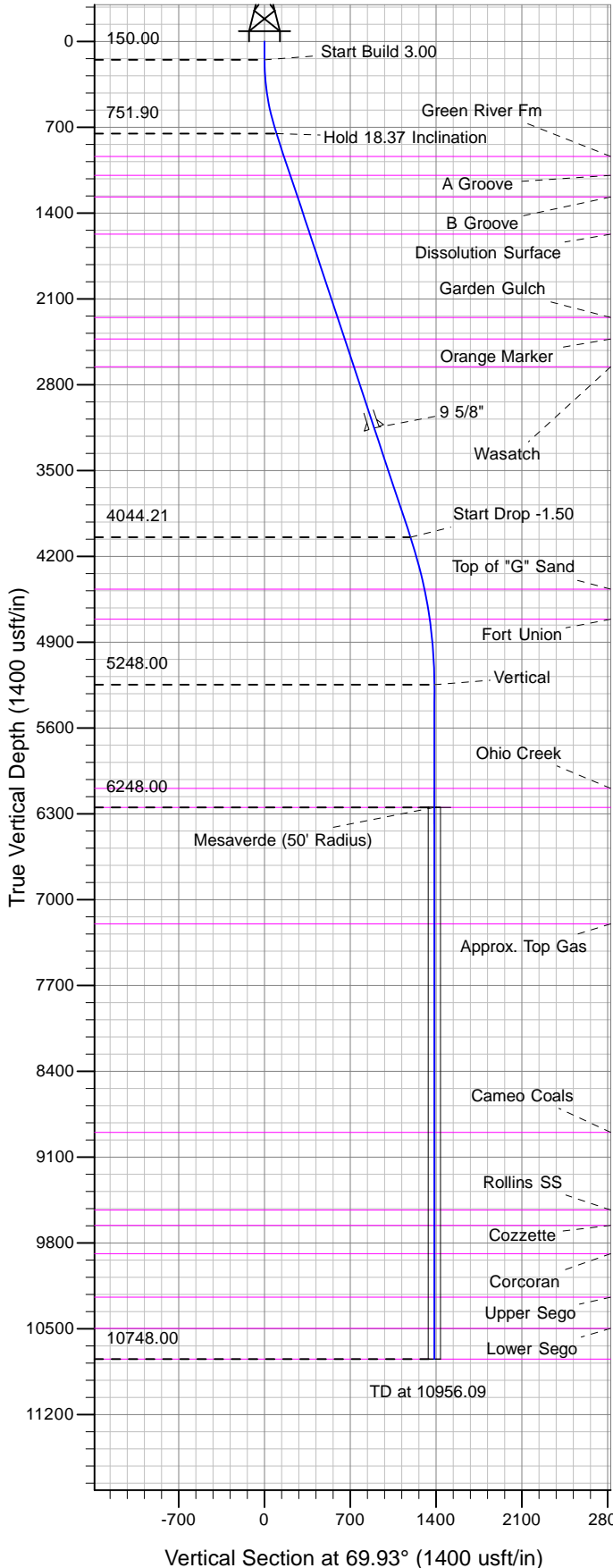




Well Name: RGU 411-9-298
Surface Location: RGU 41-8-298 Pad
North American Datum 1983 , US State Plane 1983 , Colorado Central Zone
Ground Elevation: 6752.00
+N/-S +E/-W Northing Easting Latitude Longitude Slot
0.00 0.00 1764156.60 2184123.70 39.89557 -108.40813 B10
KELLY BUSHING @ 6773.00usft (Cyclone 29 (21' RKB) kjs)



Project: RG 08-02S-098W
Site: RGU 41-8-298 Pad
Well: RGU 411-9-298
Design #3 23Jan14 kjs

Azimuths to True North
Magnetic North: 10.26°
Magnetic Field
Strength: 52219.9snT
Dip Angle: 65.94°
Date: 9/23/2013
Model: IGRF2005-10

ANNOTATIONS									
TVD	MD	Inc	Azi	+N/-S	+E/-W	V Sect	Departure	Annotation	
150.00	150.00	0.00	0.00	0.00	0.00	0.00	0.00	Start Build 3.00	
751.90	762.33	18.37	69.93	33.41	91.41	97.32	97.32	Hold 18.37 Inclination	
4044.21	4231.43	18.37	69.93	408.66	1118.28	1190.61	1190.61	Start Drop -1.50	
5248.00	5456.09	0.00	0.00	475.47	1301.11	1385.26	1385.26	Vertical	
6248.00	6456.09	0.00	0.00	475.47	1301.11	1385.26	1385.26	Mesaverde	
10748.00	10956.09	0.00	0.00	475.47	1301.11	1385.26	1385.26	TD at 10956.09	