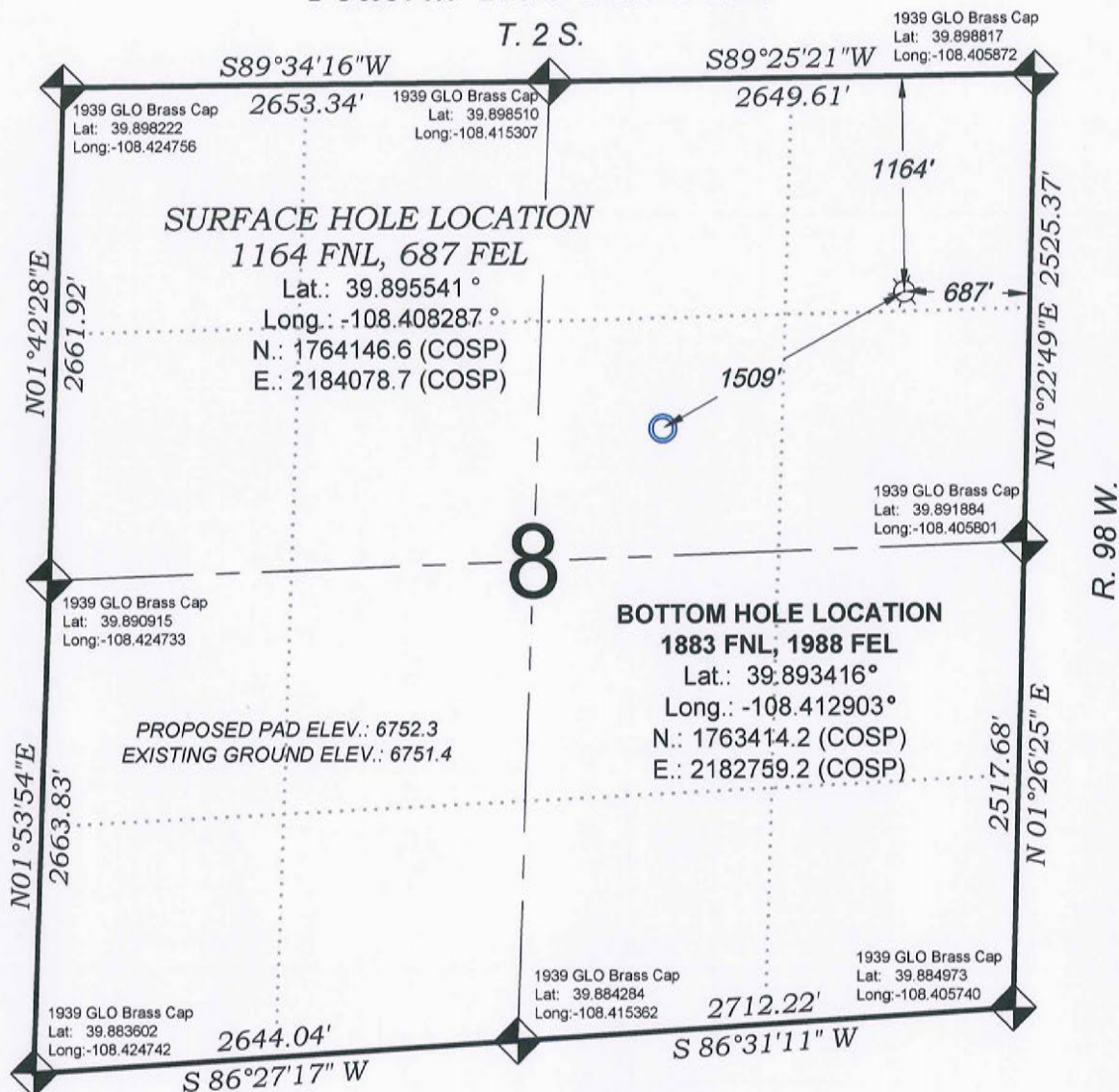


Federal RGU 332-8-298



SEE CONSTRUCTION LAYOUT
PLAT FOR VISIBLE IMPROVEMENTS
WITHIN 500' OF THIS LOCATION

SURVEYORS STATEMENT

I, MICHAEL J. LANGHORNE, A REGISTERED LAND SURVEYOR IN THE STATE OF COLORADO DO HEREBY CERTIFY THAT THE SURVEY SHOWN HEREON WAS PREPARED UNDER MY DIRECT SUPERVISION AND HAS BEEN STAKED ON THE GROUND AS SHOWN ON THE PLAT AND CHECKING THAT THIS MAP IS A TRUE REPRESENTATION THEREOF.

MICHAEL J. LANGHORNE, COLORADO REGISTRATION NO. 36572
FOR AND ON BEHALF OF
BOOKCLIFF SURVEY SERVICES, INC.

REFERENCES

- 1) 1937 DEPENDENT RESURVEY T. 2 S., R. 98 W., 6th P.M (GLO PLAT)
- 2) U.S.G.S. QUAD: Wolf Ridge, CO

136 East Third Street
Rifle, Colorado
81650 Ph. (970)
625-2720 Fax (970)
625-2773

BOOKCLIFF
Survey Services, Inc.

SURVEY DATE: 3/14/13
MAP DATE: 11/20/13
SCALE: 1" = 1000'
PLAT: 1 of 1
PROJECT: Highlands

- LEGEND -

FIELD LOCATED SECTION
MONUMENTS AS DESCRIBED



FIELD SURVEYED
WELL LOCATION



CALCULATED BOTTOM
HOLE LOCATION



CALCULATED SECTION
CORNER LOCATION



NOTES

- 1) ELEVATIONS BASED ON N.A.V.D. 1988 PUBLISHED COORDINATES.
- 2) LATITUDES AND LONGITUDES ARE BASED ON NAD 83, PUBLISHED COORDINATES.
- 3) STATE PLANE COORDINATES ARE BASED ON COLORADO CENTRAL ZONE, U.S. SURVEY FEET.
- 4) ELEVATION MASK SET TO 15"
- 5) GPS OPERATOR J. KIRKPATRICK, OBSERVED A PDOP OF 1.9 FOR SURVEY POINT NUMBER 333.
- 6) SURFACE AND BOTTOM HOLE LOCATIONS ARE MEASURED 90° FROM SECTION LINES.

WELL LOCATION PLAT Prepared for:
WPXENERGY. WPX Energy Rocky Mountain, LLC

NE1/4 NE1/4, SECTION 8
T. 2 S., R. 98 W. of the 6th. P.M.
Rio BLANCO COUNTY, COLORADO