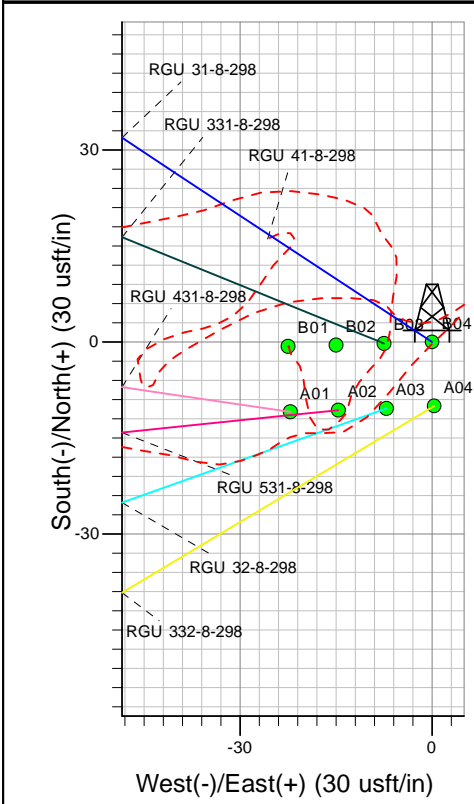
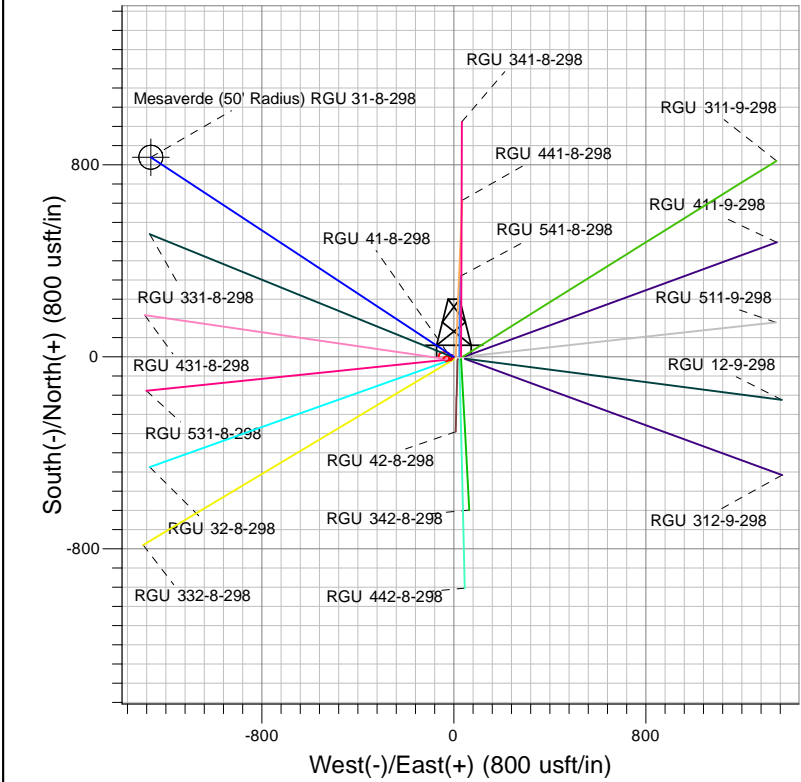
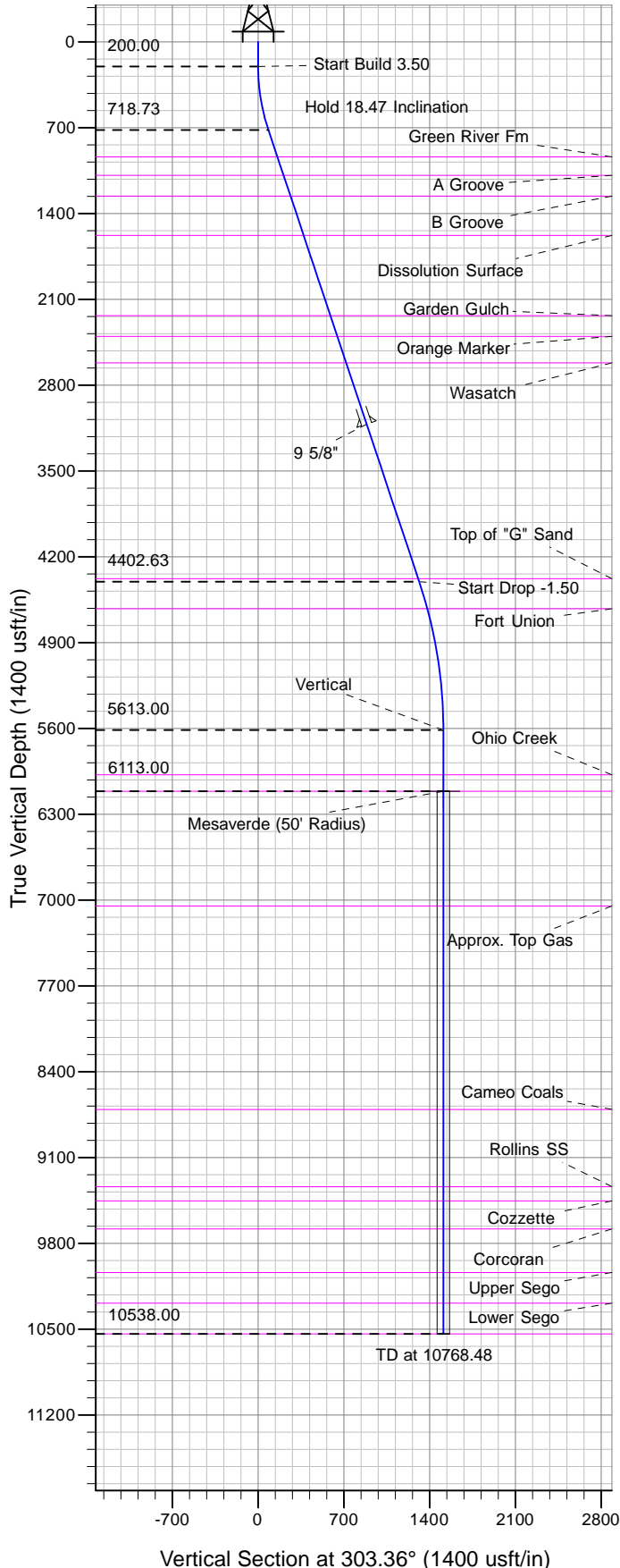




Well Name: RGU 31-8-298
Surface Location: RGU 41-8-298 Pad
North American Datum 1983 , US State Plane 1983 , Colorado Central Zone
Ground Elevation: 6752.00
+N/-S +E/-W Northing Easting Latitude Longitude Slot
0.00 0.00 1764156.60 2184078.70 39.89557 -108.40829 B04
KELLY BUSHING @ 6773.00usft (Cyclone 29 (21' RKB) kjs)



Project: RG 08-02S-098W
Site: RGU 41-8-298 Pad
Well: RGU 31-8-298
Design #3 23Jan14 kjs

Azimuths to True North
Magnetic North: 10.26°
Magnetic Field
Strength: 52219.9snT
Dip Angle: 65.94°
Date: 9/23/2013
Model: IGRF2005-10

ANNOTATIONS									
TVD	MD	Inc	Azi	+N/-S	+E/-W	Vsect	Departure	Annotation	
200.00	200.00	0.00	0.00	0.00	0.00	0.00	0.00	Start Build 3.50	
718.73	727.83	18.47	303.36	46.39	-70.46	84.36	84.36	Hold 18.47 Inclination	
4402.63	4611.88	18.47	303.36	723.18	-1098.42	1315.12	1315.12	Start Drop -1.50	
5613.00	5843.48	0.00	0.00	831.43	-1262.83	1511.95	1511.95	Vertical	
6113.00	6343.48	0.00	0.00	831.43	-1262.83	1511.95	1511.95	Mesaverde	
10538.00	10768.48	0.00	0.00	831.43	-1262.83	1511.95	1511.95	TD at 10768.48	