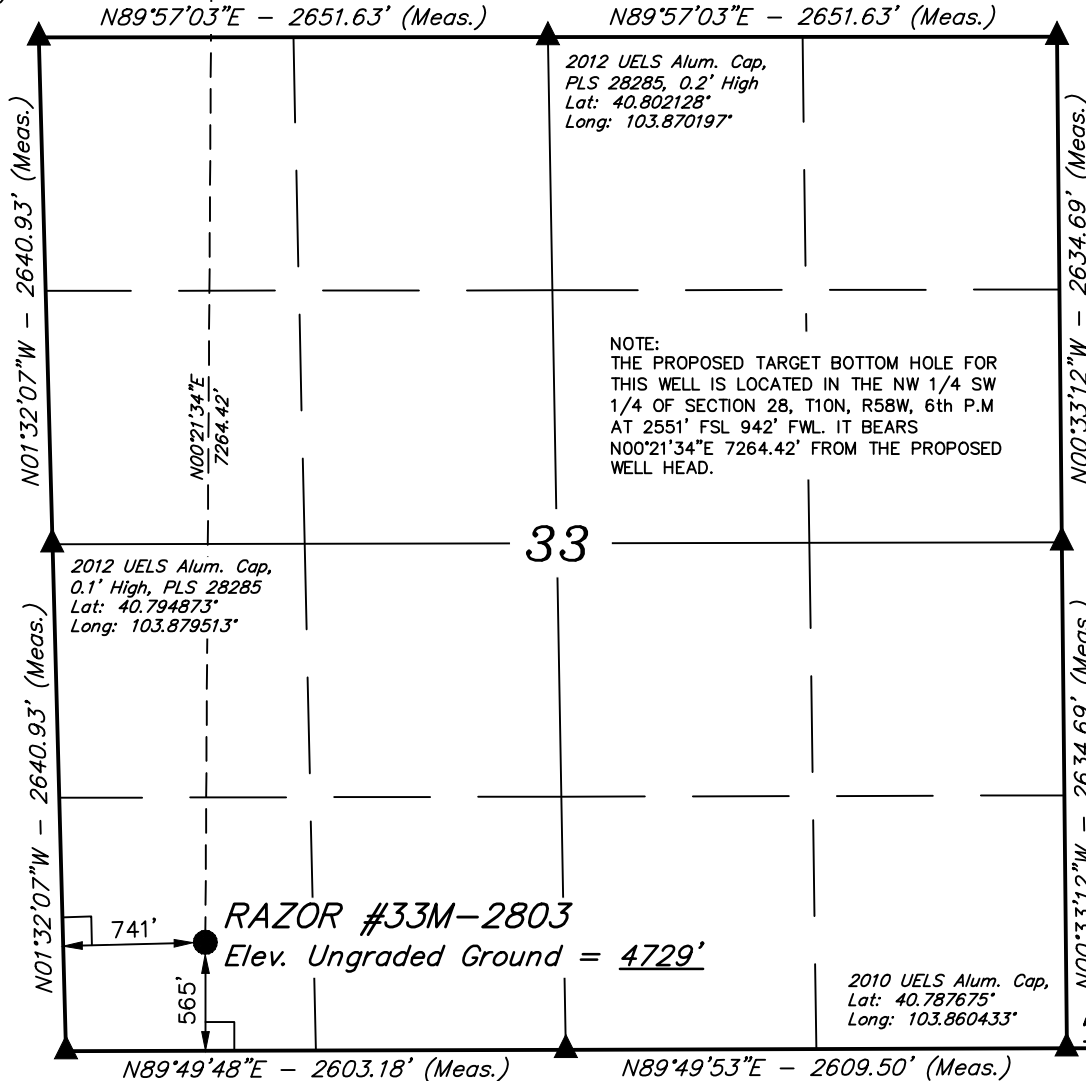


2010 UELS  
Alum. Cap,  
0.3' High  
Lat: 40.802117°  
Long: 103.879772°



**T10N, R58W, 6th P.M.**  
Target Bottom Hole

2010 UELS Alum. Cap,  
0.5' Below Ground  
Lat: 40.802136°  
Long: 103.860622°



NOTE:  
THE PROPOSED TARGET BOTTOM HOLE FOR  
THIS WELL IS LOCATED IN THE NW 1/4 SW  
1/4 OF SECTION 28, T10N, R58W, 6th P.M  
AT 2551' FSL 942' FWL. IT BEARS  
N00°21'34"E 7264.42' FROM THE PROPOSED  
WELL HEAD.

**WHITING OIL & GAS CORP.**

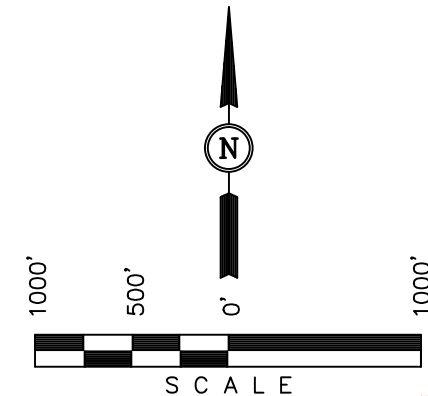
Well location, RAZOR 33M-2803 (SURFACE  
LOCATION), located as shown in the SW 1/4 SW  
1/4 of Section 33, T10N, R58W, 6th P.M., Weld  
County, Colorado.

**BASIS OF ELEVATION**

SPOT ELEVATION LOCATED AT THE NORTHEAST CORNER OF  
SECTION 15, T9N, R58W, 6th P.M. TAKEN FROM THE  
GATEHOOK SPRING, QUADRANGLE, COLORADO, WELD COUNTY,  
7.5 MINUTE QUAD (TOPOGRAPHIC MAP) PUBLISHED BY THE  
UNITED STATES DEPARTMENT OF THE INTERIOR, GEOLOGICAL  
SURVEY. SAID ELEVATION IS MARKED AS BEING 4679 FEET.

**BASIS OF BEARINGS**

BASIS OF BEARINGS IS A G.P.S. OBSERVATION.



**CERTIFICATION**

THIS IS TO CERTIFY THAT THE ABOVE PLAT WAS PREPARED FROM  
FIELD NOTES OF ACTUAL SURVEYS MADE BY ME OR UNDER MY  
SUPERVISION AND THAT THE SAME ARE TRUE AND CORRECT TO THE  
BEST OF MY KNOWLEDGE AND BELIEF.

REGISTERED LAND SURVEYOR  
REGISTRATION NO. 28285  
STATE OF COLORADO

REVISED: 02-19-14 H.K.W.  
REVISED: 09-19-13  
REVISED: 08-29-13

**UINTAH ENGINEERING & LAND SURVEYING**  
85 SOUTH 200 EAST - VERNAL, UTAH 84078  
(435) 789-1017

**LEGEND:**

- └─┘ = 90° SYMBOL
- = PROPOSED WELL HEAD.
- ▲ = SECTION CORNERS LOCATED.

PDOP = 1.6

**NAD 83 (SURFACE LOCATION)**  
LATITUDE = 40°47'21.07" (40.789186)  
LONGITUDE = 103°52'35.88" (103.876633)  
**NAD 27 (SURFACE LOCATION)**  
LATITUDE = 40°47'21.12" (40.789200)  
LONGITUDE = 103°52'34.07" (103.876131)

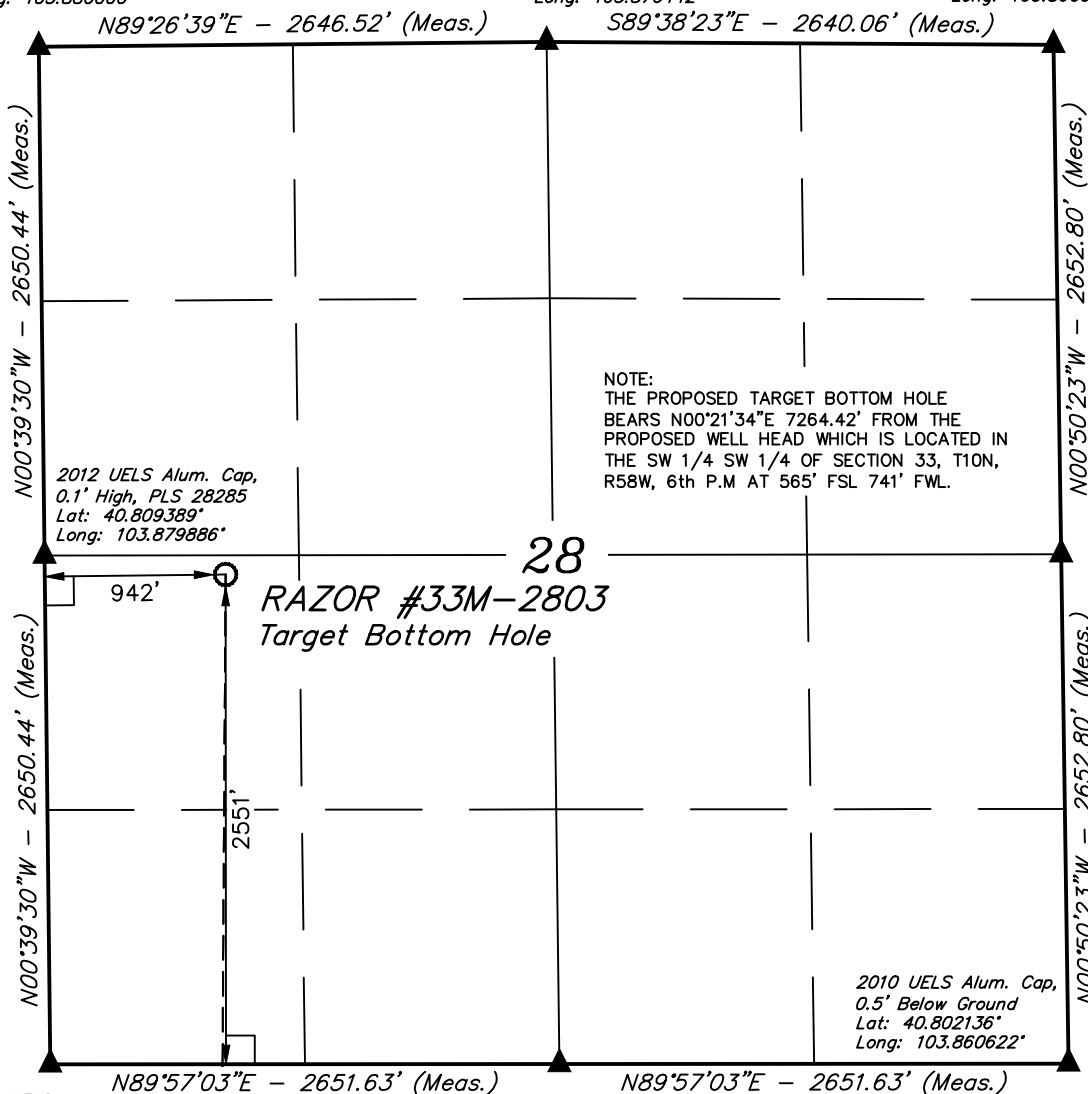
SCALE 1" = 1000'	DATE SURVEYED: 08-07-13	DATE DRAWN: 08-12-13
PARTY D.L.S. D.M.S. B.D.H.	REFERENCES G.L.O. PLAT	
WEATHER HOT	FILE WHITING OIL & GAS CORP.	

2010 UELS Alum. Cap,  
Flush W/Ground  
RLS 17492  
Lat: 40.816664°  
Long: 103.880000°

T10N, R58W, 6th P.M.

2012 UELS Alum.  
Cap, 0.5' High  
Lat: 40.816736°  
Long: 103.870442°

2010 UELS Alum. Cap,  
0.5' Below Ground  
Lat: 40.816692°  
Long: 103.860906°



2010 UELS  
Alum. Cap,  
0.3' High  
Lat: 40.802117°  
Long: 103.879772°

2012 UELS Alum. Cap,  
PLS 28285, 0.2' High  
Lat: 40.802128°  
Long: 103.870197°

**LEGEND:**

- = 90° SYMBOL
- = PROPOSED WELL HEAD.
- = SECTION CORNERS LOCATED.

Surface  
Location

NAD 83 (TARGET BOTTOM HOLE)	
LATITUDE	= 40°48'32.84" (40.809122)
LONGITUDE	= 103°52'35.33" (103.876481)
NAD 27 (TARGET BOTTOM HOLE)	
LATITUDE	= 40°48'32.88" (40.809133)
LONGITUDE	= 103°52'33.52" (103.875978)

**WHITING OIL & GAS CORP.**

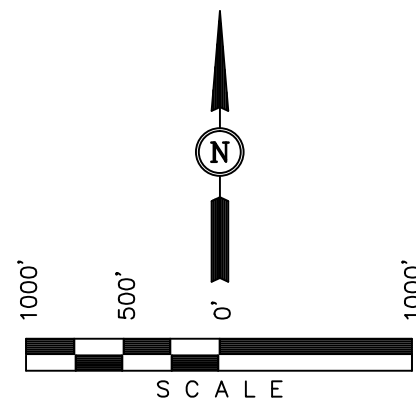
Well location, RAZOR #33M-2803 (TARGET BOTTOM HOLE), located as shown in the NW 1/4 SW 1/4 of Section 28, T10N, R58W, 6th P.M., Weld County, Colorado.

**BASIS OF ELEVATION**

SPOT ELEVATION LOCATED AT THE NORTHEAST CORNER OF SECTION 15, T9N, R58W, 6th P.M. TAKEN FROM THE GATEHOOK SPRING, QUADRANGLE, COLORADO, WELD COUNTY, 7.5 MINUTE QUAD (TOPOGRAPHIC MAP) PUBLISHED BY THE UNITED STATES DEPARTMENT OF THE INTERIOR, GEOLOGICAL SURVEY. SAID ELEVATION IS MARKED AS BEING 4679 FEET.

**BASIS OF BEARINGS**

BASIS OF BEARINGS IS A G.P.S. OBSERVATION.



**CERTIFICATION**

THIS IS TO CERTIFY THAT THE ABOVE PLAT WAS PREPARED FROM FIELD NOTES OF ACTUAL SURVEYS MADE BY ME OR UNDER MY SUPERVISION AND THAT THE SAME ARE TRUE AND CORRECT TO THE BEST OF MY KNOWLEDGE AND BELIEF.

REGISTERED LAND SURVEYOR  
REGISTRATION NO. 28285  
STATE OF COLORADO

REVISED: 02-19-14 H.K.W.  
REVISED: 09-19-13  
REVISED: 08-29-13

**UINTAH ENGINEERING & LAND SURVEYING**  
85 SOUTH 200 EAST - VERNAL, UTAH 84078  
(435) 789-1017

SCALE 1" = 1000'	DATE SURVEYED: 08-07-13	DATE DRAWN: 08-12-13
PARTY D.L.S. D.M.S. B.D.H.	REFERENCES G.L.O. PLAT	
WEATHER HOT	FILE WHITING OIL & GAS CORP.	