

*The Road to Excellence Starts with Safety*

Sold To #: 300721	Ship To #: 2976489	Quote #:	Sales Order #: 900161392
Customer: WPX ENERGY ROCKY MOUNTAIN LLC-EBUS		Customer Rep: Brunk, Andrew	
Well Name: RGU	Well #: 21-24-198	API/UWI #: 05-103-11806	
Field: SULPHUR CREEK	City (SAP): MEEKER	County/Parish: Rio Blanco	State: Colorado
Lat: N 39.953 deg. OR N 39 deg. 57 min. 10.03 secs.		Long: W 108.34 deg. OR W -109 deg. 39 min. 36.778 secs.	
Contractor: CYCLONE 29	Rig/Platform Name/Num: CYCLONE 29		
Job Purpose: Cement Multiple Stages			
Well Type: Development Well		Job Type: Cement Multiple Stages	
Sales Person: MAYO, MARK		Srvc Supervisor: WYCKOFF, RYAN	MBU ID Emp #: 476117

**Job Personnel**

HES Emp Name	Exp Hrs	Emp #	HES Emp Name	Exp Hrs	Emp #	HES Emp Name	Exp Hrs	Emp #
BANKS, BRENT A	0.0	371353	GRAGERT, JEFFREY Robert	0.0	528091	LINN, PAUL Andrew	0.0	479143
WYCKOFF, RYAN Scott	0.0	476117						

**Equipment**

HES Unit #	Distance-1 way	HES Unit #	Distance-1 way	HES Unit #	Distance-1 way	HES Unit #	Distance-1 way
10616651C	30 mile	10784080	30 mile	10867531	30 mile	10989685	30 mile
11360883	30 mile	11583932	30 mile	11808827	30 mile		

**Job Hours**

Date	On Location Hours	Operating Hours	Date	On Location Hours	Operating Hours	Date	On Location Hours	Operating Hours
<b>TOTAL</b>								

Total is the sum of each column separately

Job				Job Times			
Formation Name	Formation Depth (MD) Top	Bottom	Called Out	Date	Time	Time Zone	
Form Type	BHST		On Location				
Job depth MD	3971. ft	Job Depth TVD	3971. ft	Job Started	30 - Jan - 2013	01:38	MST
Water Depth		Wk Ht Above Floor	2. ft	Job Completed	30 - Jan - 2013	08:44	MST
Perforation Depth (MD) From		To		Departed Loc			

**Well Data**

Description	New / Used	Max pressure psig	Size in	ID in	Weight lbm/ft	Thread	Grade	Top MD ft	Bottom MD ft	Top TVD ft	Bottom TVD ft
-------------	------------	-------------------	---------	-------	---------------	--------	-------	-----------	--------------	------------	---------------

**Tools and Accessories**

Type	Size	Qty	Make	Depth	Type	Size	Qty	Make	Depth	Type	Size	Qty	Make
Guide Shoe					Packer					Top Plug			
Float Shoe					Bridge Plug					Bottom Plug			
Float Collar					Retainer					SSR plug set			
Insert Float										Plug Container			
Stage Tool										Centralizers			

**Miscellaneous Materials**

Gelling Agt	Conc	Surfactant	Conc	Acid Type	Qty	Conc %
Treatment Fld	Conc	Inhibitor	Conc	Sand Type	Size	Qty

**Fluid Data**

Stage/Plug #: 1										
Fluid #	Stage Type	Fluid Name	Qty	Qty uom	Mixing Density lbm/gal	Yield ft3/sk	Mix Fluid Gal/sk	Rate bbl/min	Total Mix Fluid Gal/sk	

Stage/Plug #: 1										
Fluid #	Stage Type	Fluid Name	Qty	Qty uom	Mixing Density lbm/gal	Yield ft3/sk	Mix Fluid Gal/sk	Rate bbl/min	Total Mix Fluid Gal/sk	

Stage/Plug #: 1									
1	Fresh Water Spacer		40.00	bbl	8.33	.0	.0	.0	
2	1st Stage Lead Cement	VERSACEM (TM) SYSTEM (452010)	700.0	sacks	12.8	1.77	9.34		9.34
	9.34 Gal	FRESH WATER							
3	1st Stage Tail Cement	VERSACEM (TM) SYSTEM (452010)	200.0	sacks	12.8	1.96	10.95		10.95
	10.95 Gal	FRESH WATER							
4	Displacement		304.00	bbl	8.33	.0	.0	.0	
5	Fresh Water Spacer		20.00	bbl	8.33	.0	.0	.0	
6	2nd Stage Tail Cement	VERSACEM (TM) SYSTEM (452010)	910.0	sacks	12.8	1.96	10.95		10.95
	10.95 Gal	FRESH WATER							
7	Displacement		136.00	bbl	8.33	.0	.0	.0	
8	HalCem TopOut	HALCEM (TM) SYSTEM (452986)		sacks	15.8	1.15	4.98		4.98
	4.98 Gal	FRESH WATER							
Calculated Values		Pressures		Volumes					
Displacement		Shut In: Instant		Lost Returns		Cement Slurry		Pad	
Top Of Cement		5 Min		Cement Returns		Actual Displacement		Treatment	
Frac Gradient		15 Min		Spacers		Load and Breakdown		Total Job	
Rates									
Circulating		Mixing		Displacement		Avg. Job			
Cement Left In Pipe	Amount	0 ft	Reason	Shoe Joint					
Frac Ring # 1 @	ID	Frac ring # 2 @	ID	Frac Ring # 3 @	ID	Frac Ring # 4 @	ID		
The Information Stated Herein Is Correct				Customer Representative Signature					

*The Road to Excellence Starts with Safety*

Sold To #: 300721	Ship To #: 2976489	Quote #:	Sales Order #: 900161392
Customer: WPX ENERGY ROCKY MOUNTAIN LLC-EBUS		Customer Rep: Brunk, Andrew	
Well Name: RGU	Well #: 21-24-198	API/UWI #: 05-103-11806	
Field: SULPHUR CREEK	City (SAP): MEEKER	County/Parish: Rio Blanco	State: Colorado
<b>Legal Description:</b>			
Lat: N 39.953 deg. OR N 39 deg. 57 min. 10.03 secs.		Long: W 108.34 deg. OR W -109 deg. 39 min. 36.778 secs.	
Contractor: CYCLONE 29		Rig/Platform Name/Num: CYCLONE 29	
Job Purpose: Cement Multiple Stages			Ticket Amount:
Well Type: Development Well		Job Type: Cement Multiple Stages	
Sales Person: MAYO, MARK		Srvc Supervisor: WYCKOFF, RYAN	MBU ID Emp #: 476117

Activity Description	Date/Time	Cht #	Rate bbl/min	Volume bbl		Pressure psig		Comments
				Stage	Total	Tubing	Casing	
Call Out	01/30/2013 13:30							ELITE # 4
Pre-Convoy Safety Meeting	01/30/2013 14:00							ALL HES EMPLOYEES
Arrive At Loc	01/30/2013 17:00							
Assessment Of Location Safety Meeting	01/30/2013 17:20							ALL HES EMPLOYEES
Pre-Rig Up Safety Meeting	01/30/2013 21:30							ALL HES EMPLOYEES
Rig-Up Equipment	01/30/2013 21:45							1 HT 400 PUMP TRUCK ( ELITE), 2-660 BULK TRUCKS, 2 SILOS, 1 F-550 PICKUP
Pre-Job Safety Meeting	01/31/2013 01:30							ALL HES EMPLOYEES AND RIG CREW
Start Job	01/31/2013 01:38							TD 3975', TP 3970.23', CSG 9 5/8" 36# FROM 0'- 5963.16', 40# FROM 5963.16' TO 3970.23', OH 18" FROM 0'-81' 14 3/4" FROM 81'-1700' 13 1/2" FROM 1700'-3975', SHOE 29.03', MUD 9.5 PPG, STAGE TOOL @ 1764.26'
Rig-Up Completed	01/31/2013 01:40							
Pressure Test	01/31/2013 01:40					3031.0		PRESSURE TEST PUMPS AND LINES TO 3000 PSI, TEST GOOD
Pump Spacer	01/31/2013 01:45		4	40	40		203.0	PUMP 40 BBL FRESH WATER SPACER
Activity Description	Date/Time	Cht #	Rate bbl/min	Volume bbl		Pressure psig		Comments
				Stage	Total	Tubing	Casing	

Sold To #: 300721

Ship To #: 2976489

Quote #:

Sales Order #: 900161392

SUMMIT Version: 7.3.0073

Saturday, February 02, 2013 02:48:00

Pump Lead Cement	01/31/2013 01:55		6.5	220.7	220.7		490.0	700 SKS, 12.8 PPG, 1.77 YIELD, 9.34 GAL/SK, WEIGHT VERIFIED VIA MUD SCALES THROUGHOUT LEAD CEMENT, 2.5 BOXES OF TUFF FIBER ADDED TO FIRST 100 BBLS OF CEMENT
Pump Tail Cement	01/31/2013 02:33		6	69.8	69.8		356.0	200 SKS, 12.8 PPG, 1.96 YIELD, 10.95 GAL/SK, WEIGHT VERIFIED VIA MUD SCALES THROUGHOUT TAIL CEMENT
Shutdown	01/31/2013 02:39							
Drop Plug	01/31/2013 02:44							DROP FIRST STAGE WIPER DART, WASH UP ON TOP OF PLUG AS PER COMPANY REP, AWAY WITH NO ISSUES
Pump Displacement	01/31/2013 02:45		10	304.2	304.2		1033.0	PUMP FRESH WATER DISPLACEMENT
Slow Rate	01/31/2013 03:02		5	131	131		418.0	SLOW RATE TO PASS THROUGH STAGE TOOL
Slow Rate	01/31/2013 03:24		2	294.2	294.2		640.0	SLOW RATE TO BUMP PLUG
Bump Plug	01/31/2013 03:26		2	304.2	304.2		1032.0	BUMP PLUG AT 640 PSI PRESSURE UP TO 1032 PSI
Check Floats	01/31/2013 03:30							CHECK FLOATS FLOATS HELD, 1.25 BBLS BACK TO DISPLACEMENT TANK, 5 BBLS OF CEMENT BACK TO SURFACE FROM 1ST STAGE
Drop Opening Device For Multiple Stage Cementer	01/31/2013 03:31							WAIT 15 MIN FOR OPENING DEVICE TO REACH TOOL
Open Multiple Stage Cementer	01/31/2013 03:47							MSC OPENED @ 670 PSI
Pump Spacer	01/31/2013 03:48		4	30	30		200.0	PUMP 30 BBLS FRESH WATER SPACER
Activity Description	Date/Time	Cht #	Rate bbl/min	Volume bbl		Pressure psig		Comments
				Stage	Total	Tubing	Casing	

Pump Tail Cement	01/31/2013 03:58			317.7	317.7		434.0	910 SKS, 12.8 PPG, 1.96 YIELD, 10.95 GAL/SK, WEIGHT VERIFIED VIA MUD SCALES THROUGHOUT TAIL CEMENT, 2.5 BOXES OF TUFF FIBER ADDED TO LAST 100 BBLS OF CEMENT, SLOWED RATE DURING CEMENT TO NOT OVERFILL CELLAR
Shutdown	01/31/2013 04:54							
Drop Plug	01/31/2013 04:57							DROP CLOSING TOOL, WASH UP ON TOP OF PLUG AS PER COMPANY REP
Pump Displacement	01/31/2013 04:58		10	136.4	136.4		525.0	PUMP FRESH WATER DISPLACEMENT
Slow Rate	01/31/2013 05:15		2	126.4	126.4		445.0	SLOW RATE TO BUMP PLUG
Bump Plug	01/31/2013 05:36		2	136.4	136.4		1664.0	BUMP PLUG AT 445 PSI, PRESSURE UP TO 1664 PSI
Check Floats	01/31/2013 05:40							CHECK FLOATS, FLOATS HELD 1.25 BBLS BACK TO DISPLACEMENT TANK, 48 BBLS OF CEMENT TO SURFACE ON 2ND STAGE
Other	01/31/2013 05:41							WAIT 2 HOURS FOR CEMENT TO FALL, CEMENT FELL 30FT
Pump Spacer	01/31/2013 08:18		1	2	2		5.0	PUMP H2O TO PRIME LINES
Pump Tail Cement	01/31/2013 08:19		1	10	10		10.0	TOP OUT:49 SKS, 15.8 PPG, 1.15 YIELD, 4.97 GAL/SK, WEIGHT VERIFIED VIA MUD SCALES THROUGHOUT TAIL CEMENT
Pump Displacement	01/31/2013 08:42		1	2	2		8.0	PUMP H2O TO CLEAN LINES
Activity Description	Date/Time	Cht #	Rate bbl/min	Volume bbl		Pressure psig		Comments
				Stage	Total	Tubing	Casing	

# HALLIBURTON

## *Cementing Job Log*

End Job	01/31/2013 08:44							NO SUGAR, NO DERRICK CHARGE, NO SUPERFLUSH 100 USED, ADDED BULK RETURN TONS AND CUFT, 8 ADD HOURS
Pre-Rig Down Safety Meeting	01/31/2013 09:00							ALL HES EMPLOYEES
Rig-Down Equipment	01/31/2013 09:10							
Pre-Convoy Safety Meeting	01/31/2013 10:40							ALL HES EMPLOYEES
Crew Leave Location	01/31/2013 10:45							THANK YOU FOR USING HALLIBURTON CEMENT RYAN WYCKOFF AND CREW

Sold To # : 300721

Ship To # :2976489

Quote # :

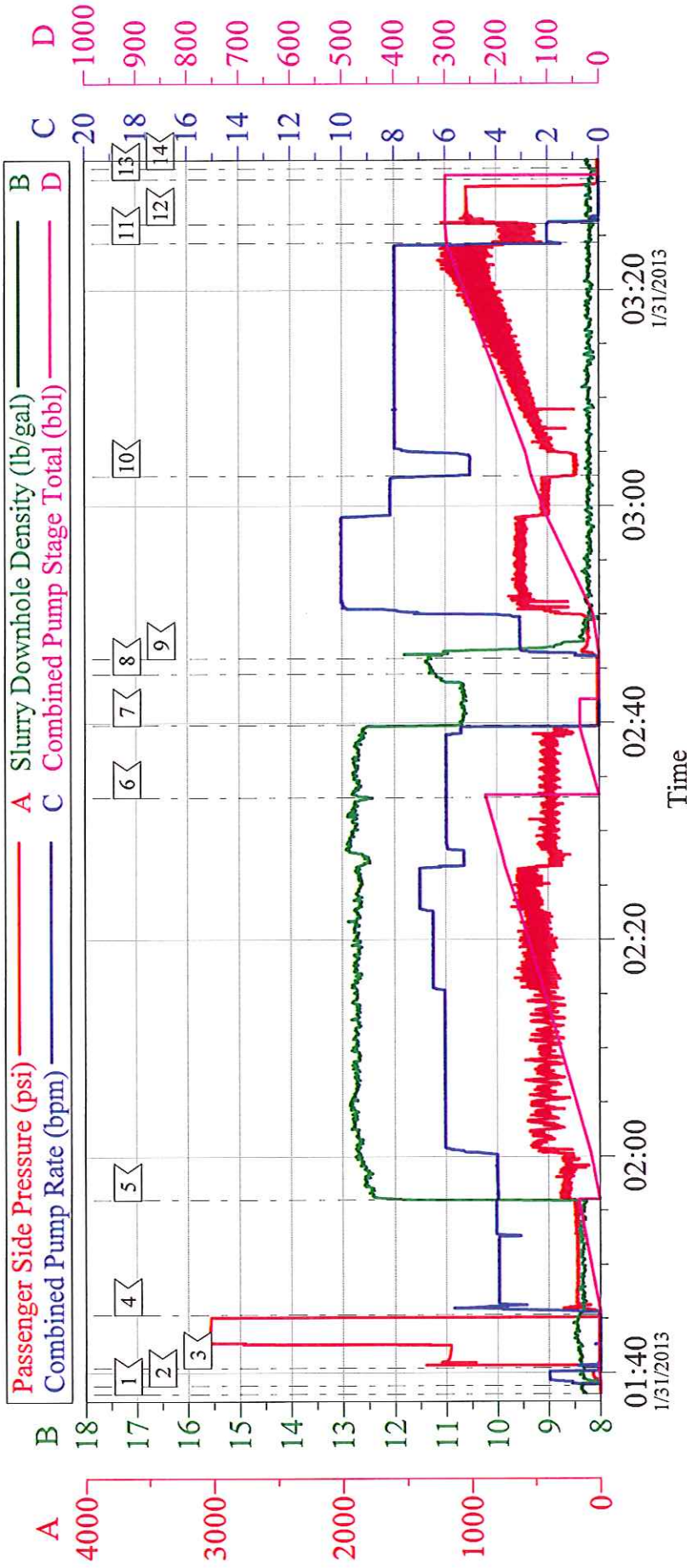
Sales Order # : 900161392

SUMMIT Version: 7.3.0073

Saturday, February 02, 2013 02:48:00

# WPX RGU 21-24-198

## 9 5/8" SURFACE 1ST STAGE



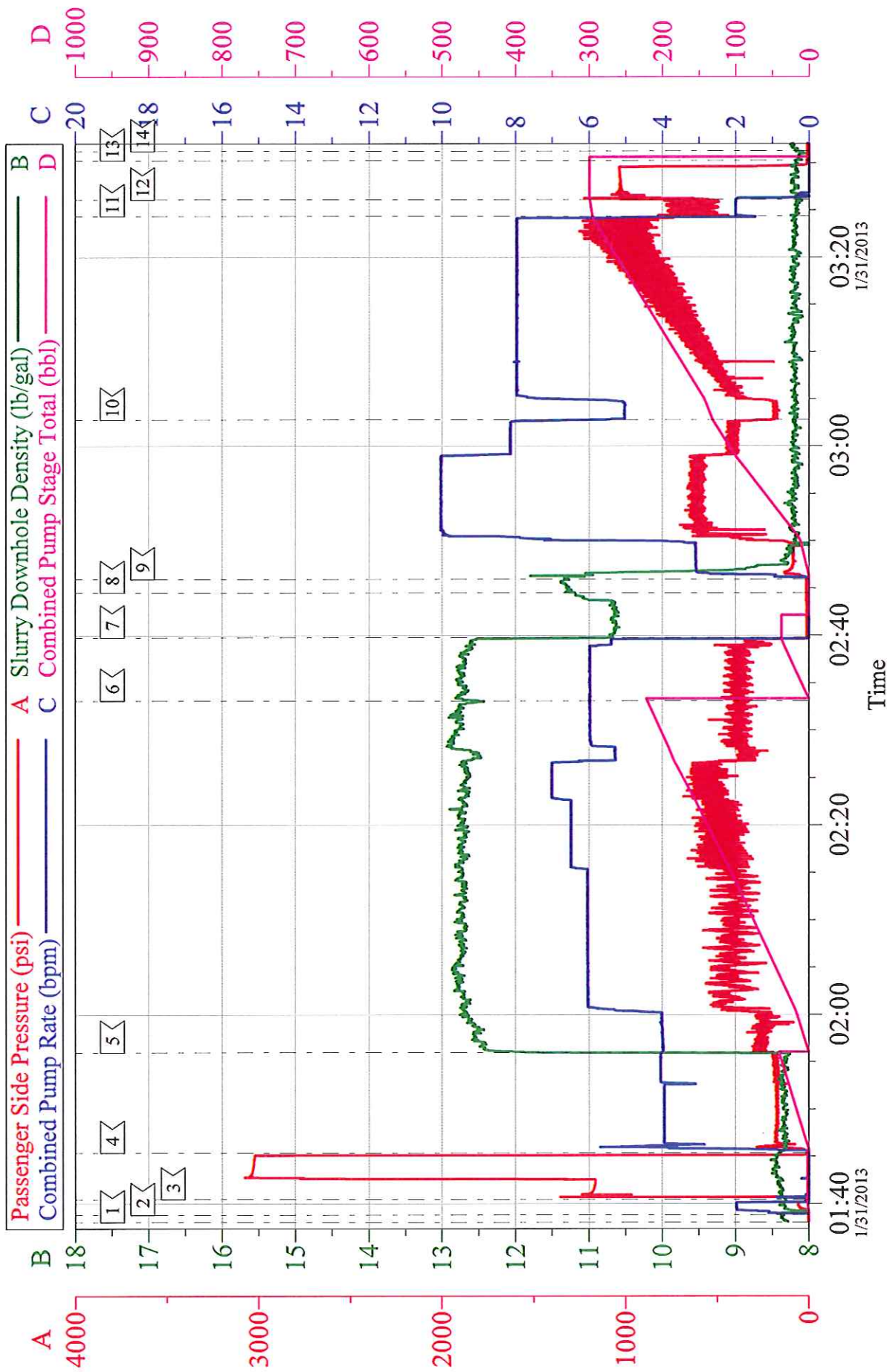
Customer: WPX  
 Well Description: RGU 21-24-198  
 Company Rep: TED RAGSDALE

Job Date: 31-Jan-2013  
 Job Type: SURFACE  
 Cement Supervisor: RYAN WYCKOFF

Sales Order #: 01:38:07  
 ADC Used: YES  
 Elite #: ANDREW LINN

# WPX RGU 21-24-198

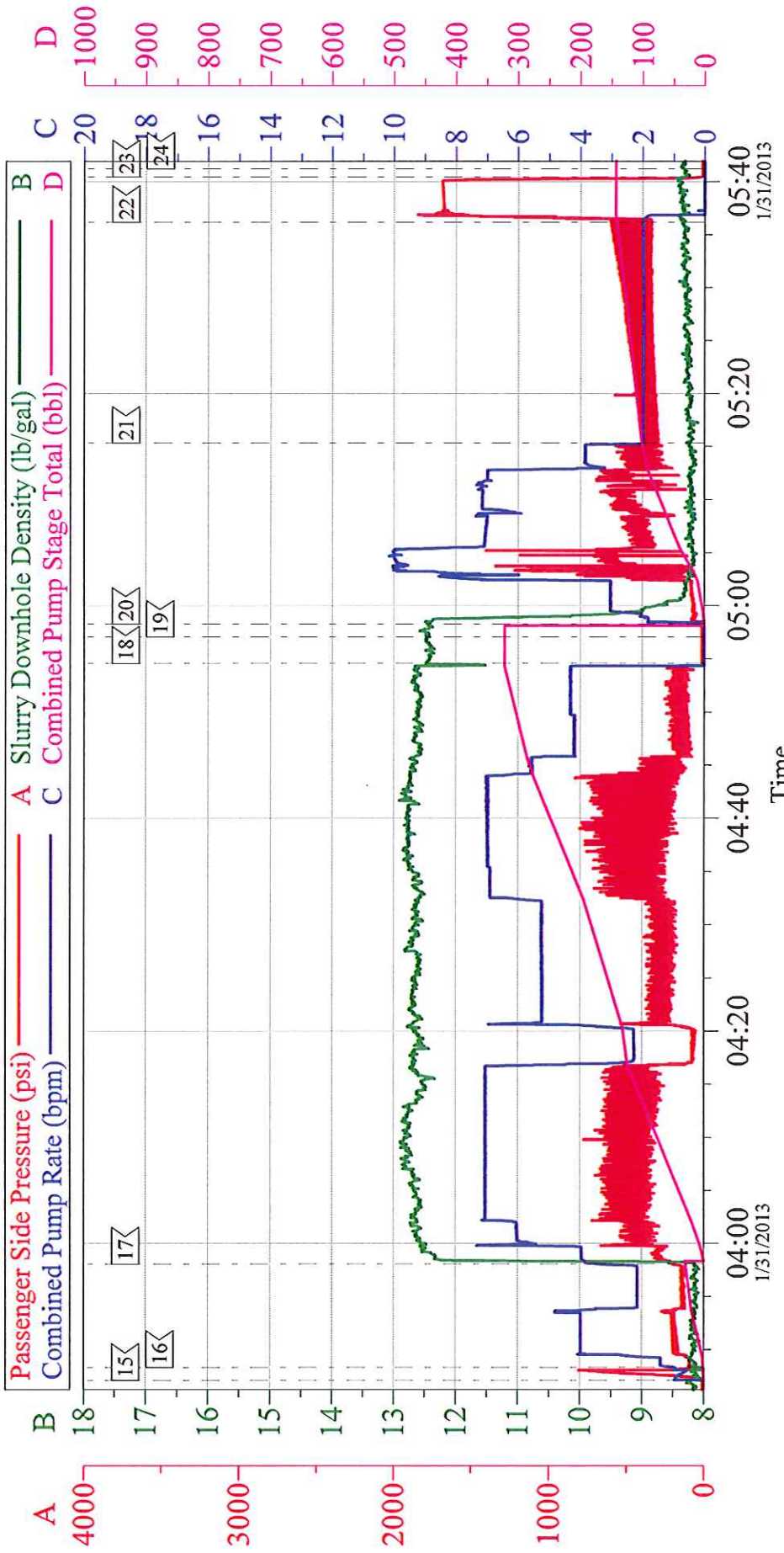
## 9 5/8" SURFACE 1ST STAGE



Customer: WPX	Job Date: 31-Jan-2013	Sales Order #: 01:38:07
Well Description: RGU 21-24-198	Job Type: SURFACE	ADC Used: YES
Company Rep: TED RAGSDALE	Cement Supervisor: RYAN WYCKOFF	Elite #: ANDREW LINN

# WPX RGU 21-24-198

## 9 5/8" SURFACE 2 ND STAGE

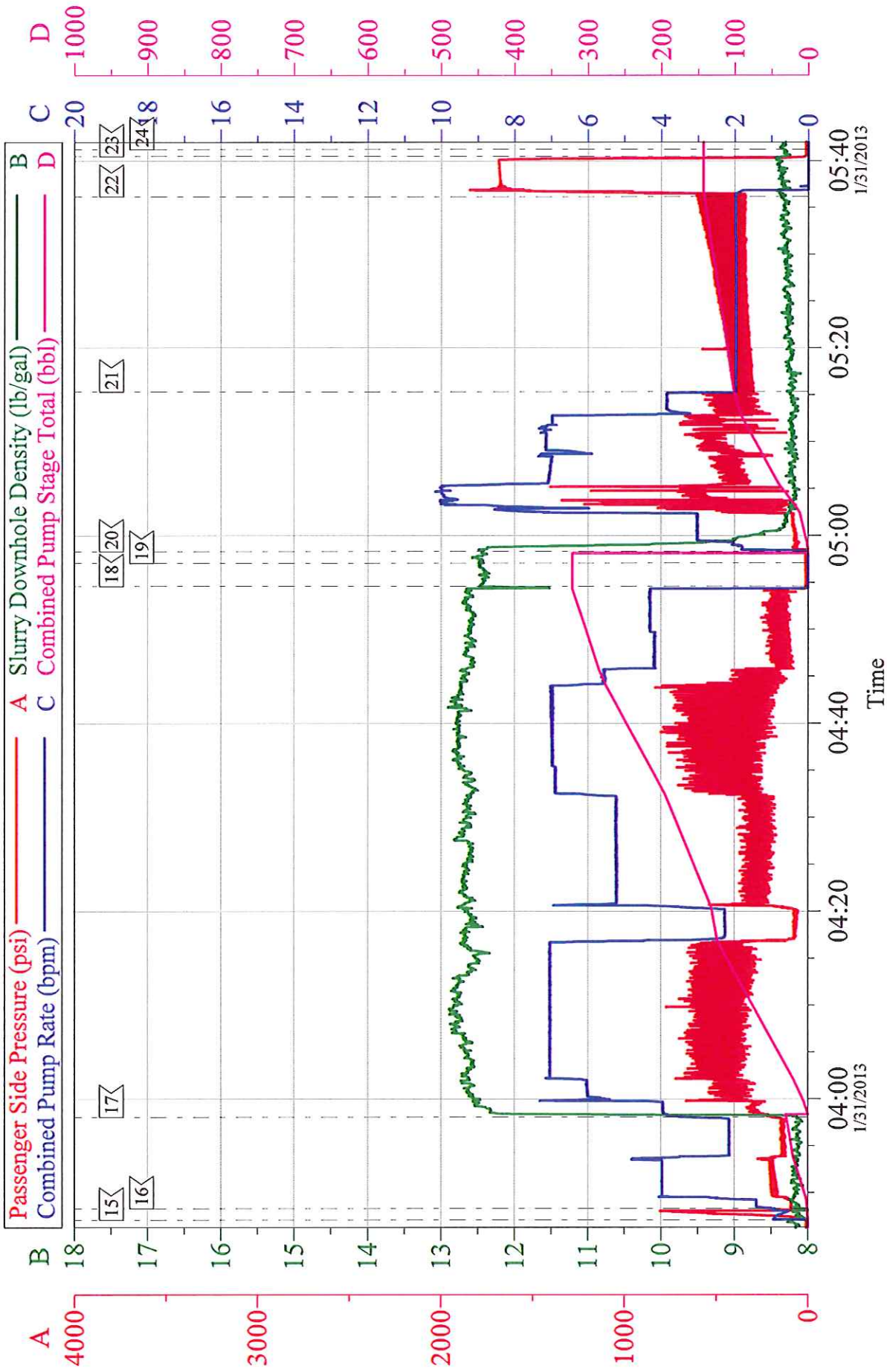


Local Event Log								
[15]	OPEN MULTISTAGE TOOL	03:47:05	[16]	PUMP H2O SPACER	03:48:19	[17]	PUMP TAIL CEMENT	03:58:04
[18]	SHUTDOWN	04:54:34	[19]	DROP CLOSING PLUG	04:57:03	[20]	PUMP H2O DISPLACEMENT	04:58:16
[21]	SLOW RATE	05:15:18	[22]	BUMP PLUG Q	05:36:09	[23]	CHECK FLOATS	05:40:28
[24]	END JOB	05:41:12						

Customer:	WPX	Job Date:	31-Jan-2013	Sales Order #:	01:38:07
Well Description:	RGU 21-24-198	Job Type:	SURFACE	ADC Used:	YES
Company Rep:	TED RAGSDALE	Cement Supervisor:	RYAN WYCKOFF	Elite #4:	ANDREW LINN

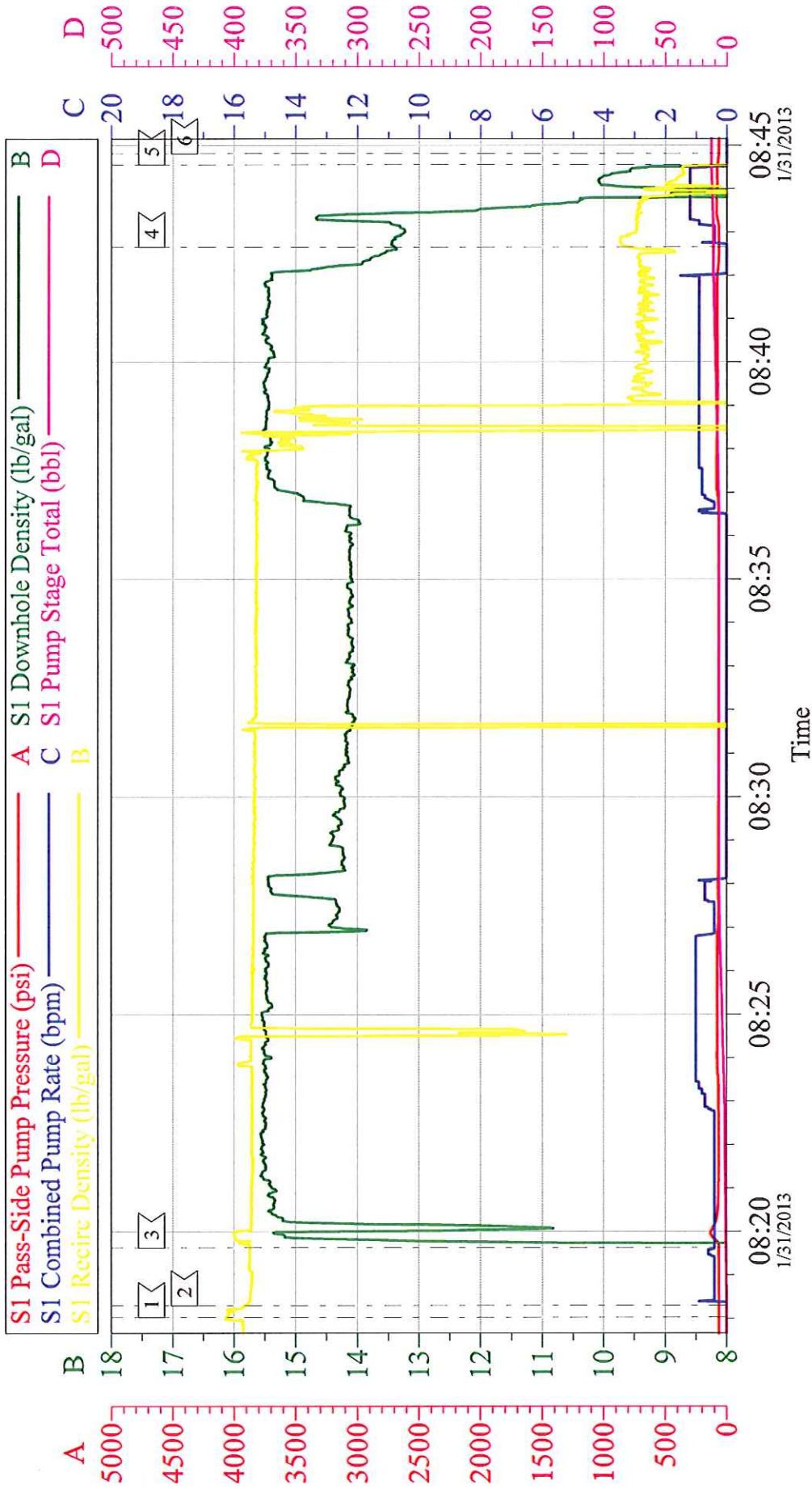
# WPX RGU 21-24-198

## 9 5/8" SURFACE 2ND STAGE



Customer: WPX	Job Date: 31-Jan-2013	Sales Order #: 01:38:07
Well Description: RGU 21-24-198	Job Type: SURFACE	ADC Used: YES
Company Rep: TED RAGSDALE	Cement Supervisor: RYAN WYCKOFF	Elite #4: ANDREW LINN

# WPX RGU 21-24-198 TOP OUT



Local Event Log								
1	START JOB	08:18:01	2	PRIME LINES	08:18:18	3	PUMP TAIL CEMENT	08:19:38
4	CLEAN LINES	08:42:39	5	SHUTDOWN	08:44:33	6	END JOB	08:44:49

Customer:	WPX	Job Date:	31-Jan-2013	Sales Order #:	900161392
Well Description:	RGU 21-24-198	Job Type:	TOP OUT	ADC Used:	YES
Company Rep:	TED RAGSDALE	Cement Supervisor:	RYAN WYCKOFF	Elite #4:	ANDREW LINN