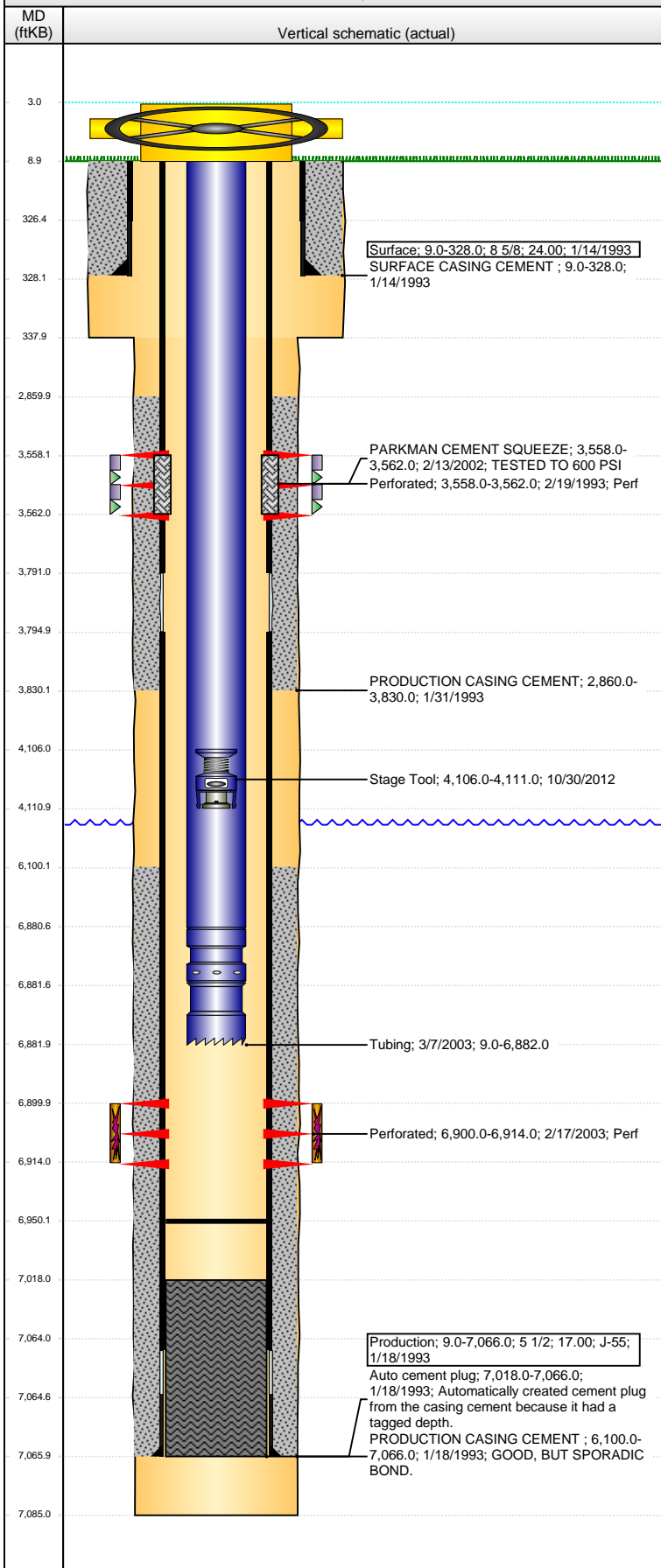


Well Name: SINJIN E36-03

VERTICAL - ORIGINAL HOLE, 3/17/2014 2:42:58 PM



Well Header

API	Business Unit	District	Well Config
05-123-16467	WATTENBERG	15	VERTICAL
Original KB Elevation (ft)	KB - GL / MSL (ftKB)	Spud Date	P & A Date
4,656.00	9.00	1/14/1993	

Comment

CBL SHOWS FO TOOL @ 3784' USED TO CEMENT ACROSS PARKMAN

Directions To Well

Congressional Location

Quarter 1	Quarter 2	Quarter 3	Quarter 4	Section	Township	Twnshp N...	Range	Rng E/W Dir
		NE	NW	36	6	N	65	W

Bottom Hole Location

North-South Distance (ft)	From N or S Line	East-West Distance (ft)	From E or W Line

Plug Back Total Depths

Date	Depth (ftKB)	Method	Com
1/18/1993	7,026.0	CASING TALLY	COLLAR W/ BAFFLE
2/1/1993	7,018.0	CASED HOLE LOG	DEPTH LOGGER FROM CBL
3/7/2003	6,950.0	TAG	CLEAN OUT & LAND TBG

Wellbore Sections

Section Des	Size (in)	Act Top, MD (ftKB)	Act Btm, MD (ftKB)
SURFACE	12 1/4	9.0	338.0
PRODUCTION	7 7/8	338.0	7,085.0

Zone Statuses

Zone Name	Status Date	Status	Job
CODELL	2/27/2003	PR	RECOMPLETION, 2/11/2003 00:00
PARKMAN	3/31/1993	PR	DRILLING/COMPLETION - ORIGINAL, 1/14/1993 00:00
PARKMAN	2/13/2002	AB	RECOMPLETION, 2/11/2003 00:00

Casing Strings

Surface, 328.0ftKB

Casing Description	Run Date	OD (in)	Wt/Len (l...)	Grade	Top, MD (ft...)	MD (ftKB)
Surface	1/14/1993	8 5/8	24.00		9.0	328.0

Production, 7,066.0ftKB

Casing Description	Run Date	OD (in)	Wt/Len (l...)	Grade	Top, MD (ft...)	MD (ftKB)
Production	1/18/1993	5 1/2	17.00	J-55	9.0	7,066.0

Cement

Description	Top Depth (ftKB)	Bottom Depth (ftKB)
SURFACE CASING CEMENT	9.0	328.0
PRODUCTION CASING CEMENT	6,100.0	7,066.0
PRODUCTION CASING CEMENT	2,860.0	3,830.0
PARKMAN CEMENT SQUEEZE	3,558.0	3,562.0

Tubing Components

Item Des	OD (in)	Wt (lb/ft)	Grade	Jts	Len (ft)	Btm (ftKB)	Btm (TVD) (ftKB)
Tubing	2 7/8	6.50	J-55	218	6,871.50	6,880.5	
Pump Seating Nipple	2 7/8				1.00	6,881.5	
Notched collar	2 7/8				0.50	6,882.0	

Perforation Data

Zone	Bnch/St g	Entered Shot Total	Top (ftKB)	Btm (ftKB)	Date
PARKMAN, ORIGINAL HOLE		40	3,558.00	3,562.00	2/19/1993
CODELL, ORIGINAL HOLE		56	6,900.00	6,914.00	2/17/2003

Stimulations & Treatments

Date	Zone	Primary Job Type
2/23/1993	PARKMAN, ORIGINAL HOLE	DRILLING/COMPLETION - ORIGINAL
Technical Result	Tech Result Details	Tech Result Note

Comment

Date	Zone	Primary Job Type
3/25/1994	PARKMAN, ORIGINAL HOLE	ACID TREATMENT
Technical Result	Tech Result Details	Tech Result Note

Comment

Well Name: SINJIN E36-03

VERTICAL - ORIGINAL HOLE, 3/17/2014 2:43:00 PM

Stimulations & Treatments

Date 2/26/2003	Zone CODELL, ORIGINAL HOLE	Primary Job Type RECOMPLETION
Technical Result	Tech Result Details	Tech Result Note
Comment		

Other In Hole

Run Date	Des	OD (in)	Top (ftKB)	Btm (ftKB)
10/30/2012	Stage Tool	2	4,106.0	4,111.0

Logs

Date	Type	Top, MD (ftKB)	Btm, MD (ftKB)
1/18/1993	COMPENSATED DENSITY	3,140.0	7,050.0
1/18/1993	INDUCTION	3,460.0	3,800.0
2/1/1993	CBL/CCL/GR	2,700.0	7,018.0
2/4/1993	NEUTRON/ GR/ CCL	3,300.0	3,800.0

