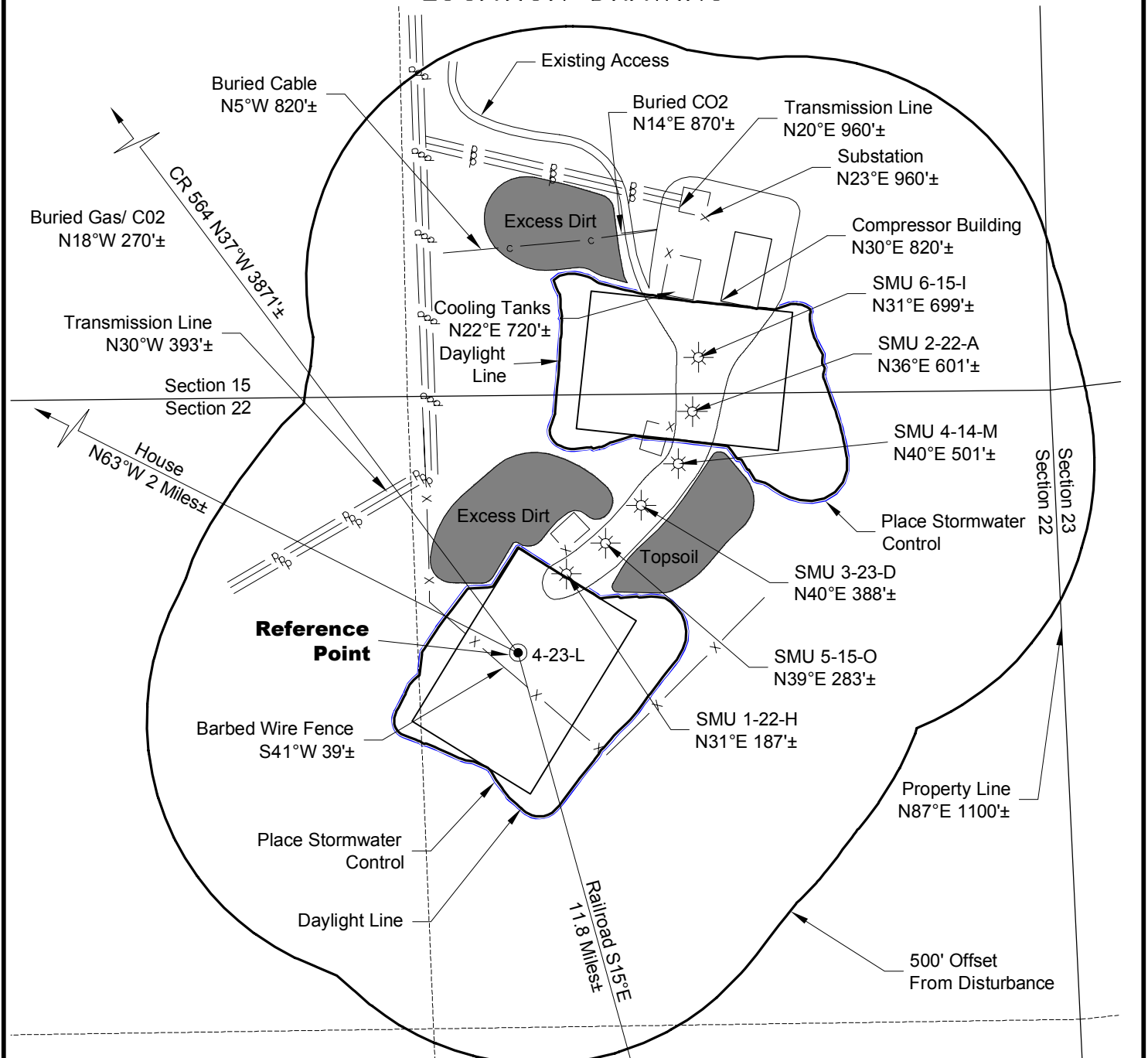


LOCATION DRAWING



PLANT COMMUNITY:
EVERGREEN
ASPEN

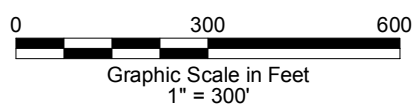


North

DISTURBANCE ACREAGE:
7.2± DRILLING OPERATIONS

REFERENCE POINT
LATITUDE: 37.69131
LONGITUDE: -105.20173
FOOTAGE: 520 FNL 1100 FEL
GROUND ELEVATION: 8765.8
PDOP: 2.3 DATE: 12/5/2013
INSTRUMENT OPERATOR: SAM SELIN

12/20/13



GEO SURV
 LAND SURVEYING AND MAPPING
 LAFAYETTE - WINTER PARK
 Ph 303 666 0379 Fx 303 665 6320

OXY PERMIAN
SMU 627S70W ANNEX
NE1/4 NE1/4 SECTION 22 T27S R70W
6th PM HUERFANO COUNTY COLORADO

DWG: G:\GEO SURV\Oxy Huerfano County\Wellpaths\4-23-L\SMU 627S70W Annex F2A.dwg
 USER: MTC
 DATE: Dec 20, 2013 10:51am