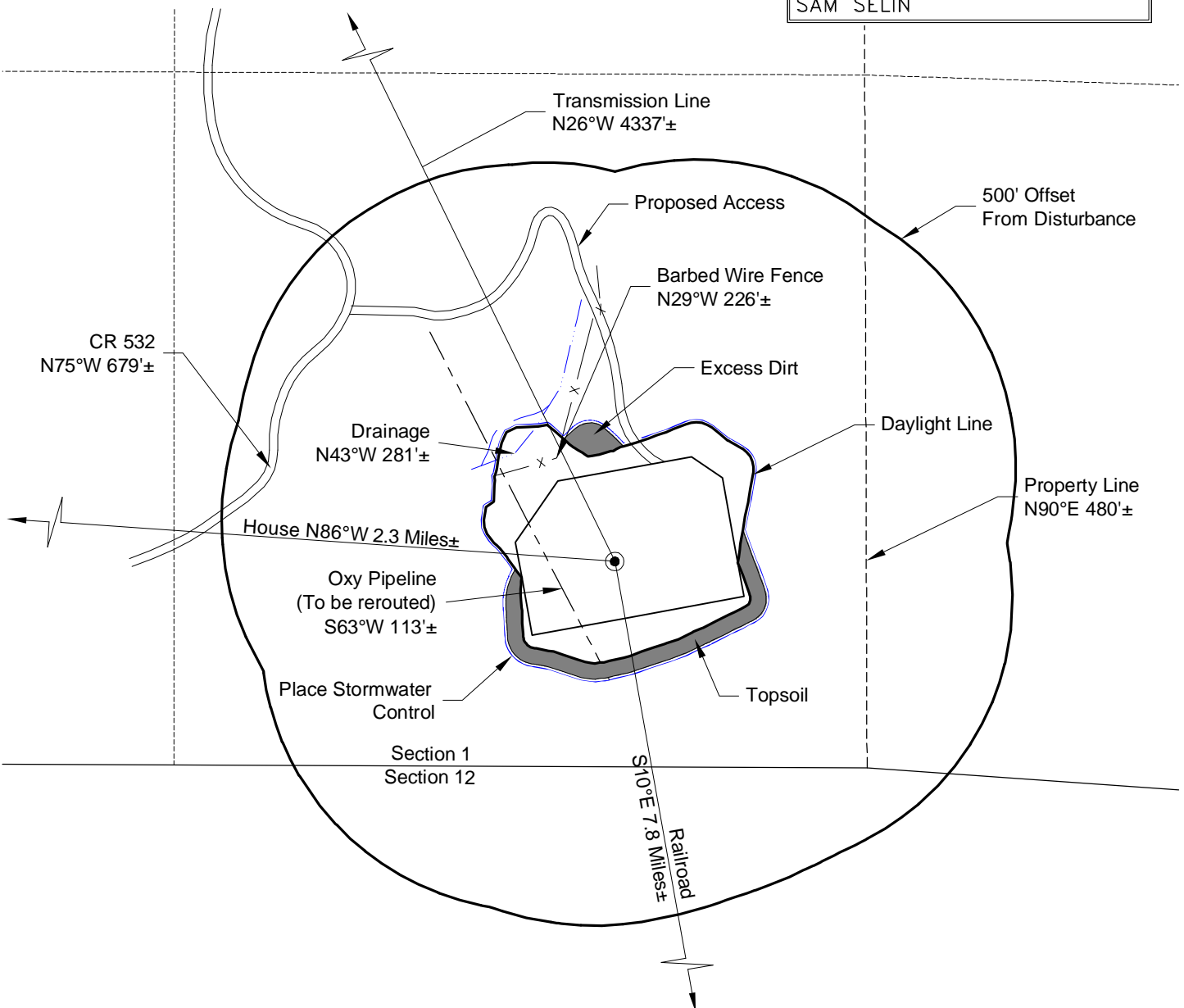


LOCATION DRAWING

PLANT COMMUNITY:
EVERGREEN
SCRUB OAK

REFERENCE POINT

LATITUDE: 37.63688
LONGITUDE: -105.17129
FOOTAGE: 391 FSL 2160 FWL
GROUND ELEVATION: 8647.3
PDOP: 2.3 DATE: 12/5/2013
INSTRUMENT OPERATOR: SAM SELIN



DISTURBANCE ACREAGE:
4.3± DRILLING OPERATIONS

12/20/13



North

0 300 600

Graphic Scale in Feet
1" = 300'



LAND SURVEYING AND MAPPING
LAFAYETTE - WINTER PARK
Ph 303 666 0379 Fx 303 665 6320

OXY PERMIAN
SMU 1-12-B PAD

SE1/4 SW1/4 SECTION 1 T28S R70W
6th PM HUERFANO COUNTY COLORADO