



**COMPLETION
& PRODUCTION
SERVICES CO.**

**Gamma Ray,
Cement Bond,
Variable Density,
CCL**

Company		Noble Energy	
Well		Marie D 4-14	
Field		Wattenberg	
County		Weld	
State		Colo	
Location:		API # : 0512313118	
SEC 4 TWP 3N RGE 64W		Other Services	
Permanent Datum	Ground Level	Elevation	K.B. D.F. G.L.
Log Measured From	Kelley Bushing		
Drilling Measured From	Kelley Bushing		
Date	1-31-14		
Run Number	one		
Depth Driller	7044		
Depth Logger	725		
Bottom Logged Interval	724		
Top Log Interval	surface		
Open Hole Size			
Type Fluid	Water		
Density / Viscosity			
Max. Recorded Temp.			
Estimated Cement Top			
Time Well Ready			
Time Logger on Bottom			
Equipment Number	703		
Location			
Recorded By	Chuck Briggs		
Witnessed By	Mr Scott Trumble		
Borehole Record		Tubing Record	
Run Number	Bit	From	To
Casing Record	Size	Wgt/Ft	Top
Surface String	8 5/8	24#	surface
Prot. String			
Production String	4 1/2	15.1	surface
Liner			7044

<<< Fold Here >>>

All interpretations are opinions based on inferences from electrical or other measurements and we cannot and do not guarantee the accuracy or correctness of any interpretation, and we shall not, except in the case of gross or willful negligence on our part, be liable or responsible for any loss, costs, damages, or expenses incurred or sustained by anyone resulting from any interpretation made by any of our officers, agents or employees. These interpretations are also subject to our general terms and conditions set out in our current Price Schedule.

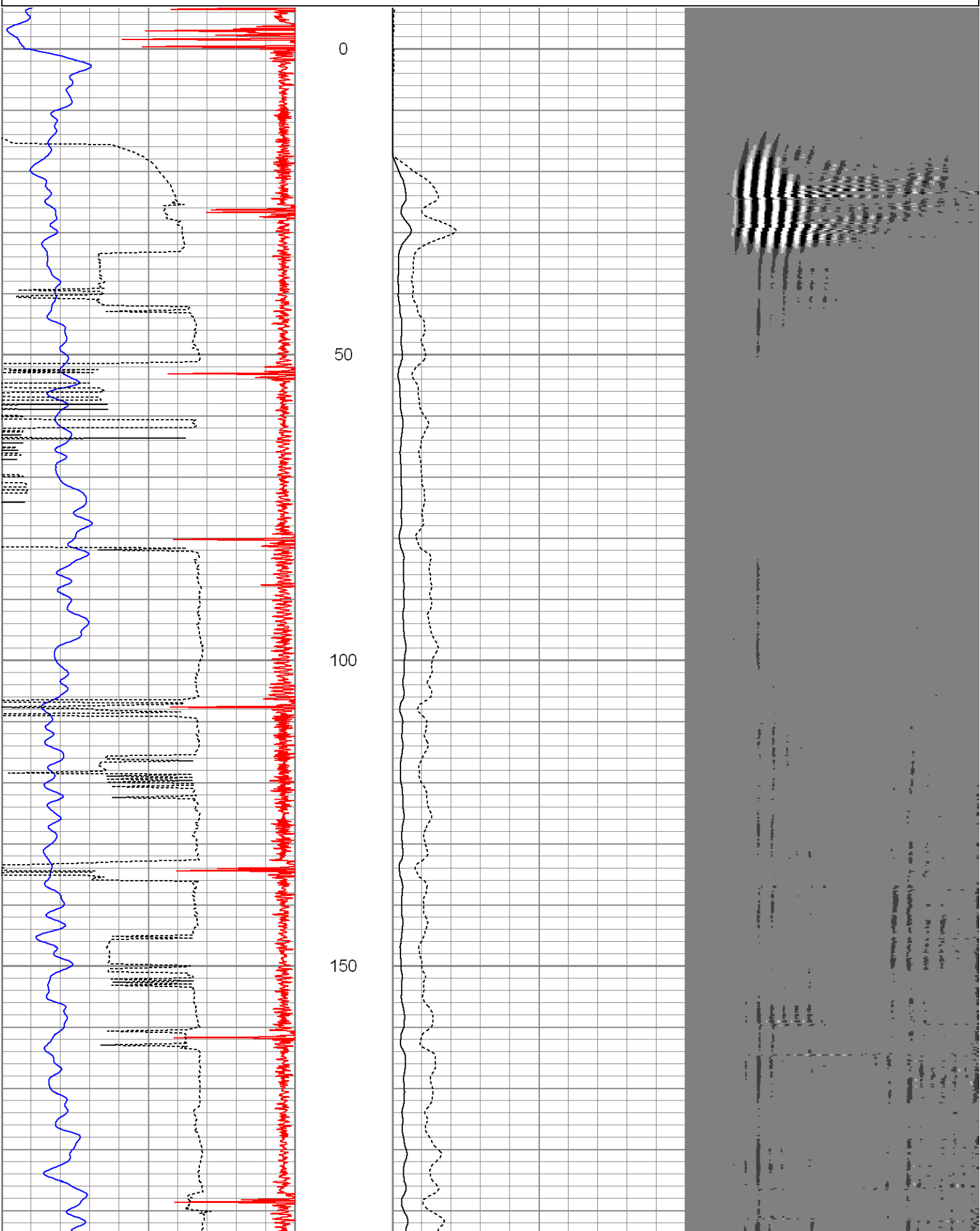
Comments

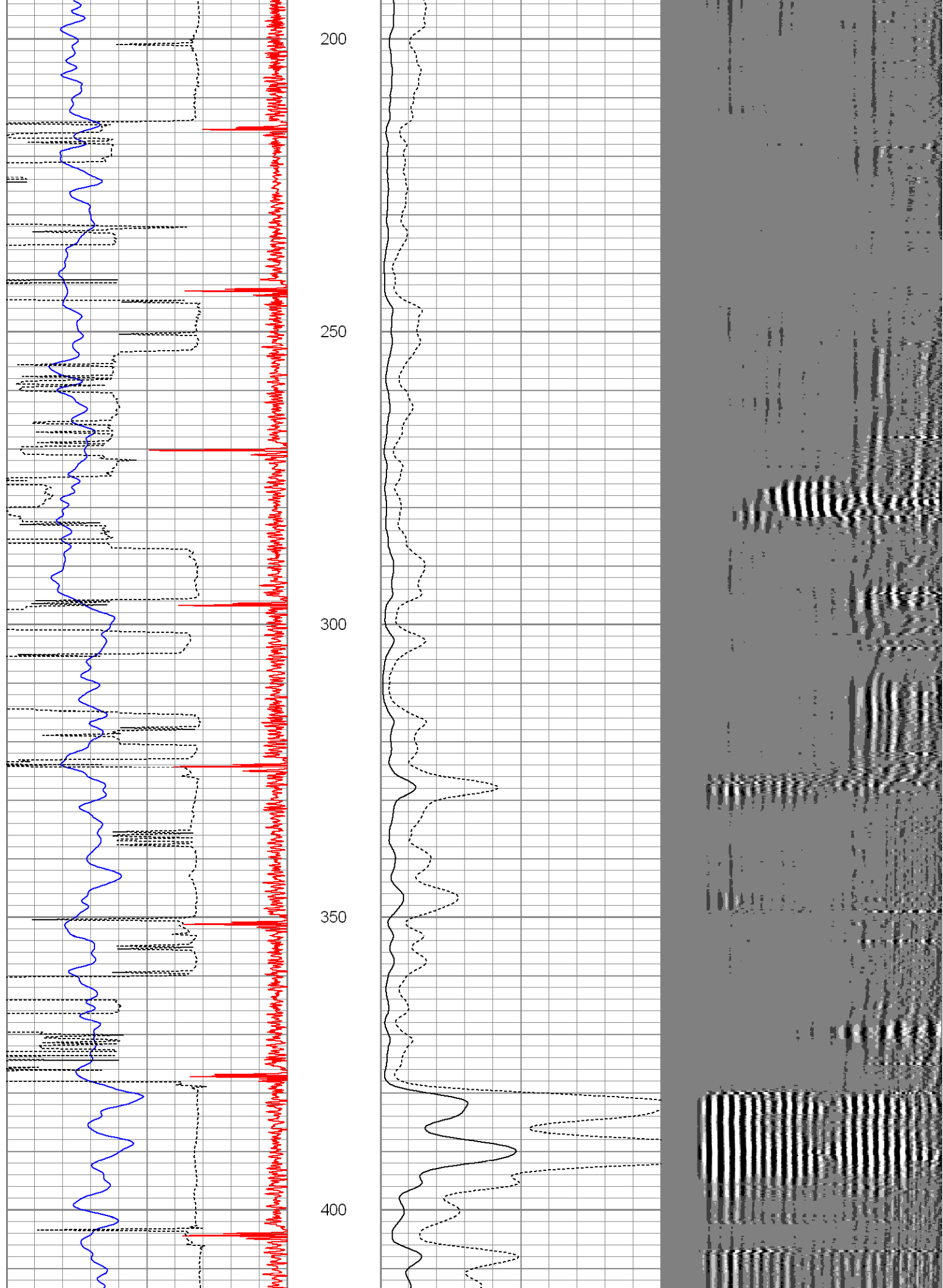
1 1/4" annular fill, ran to 600'

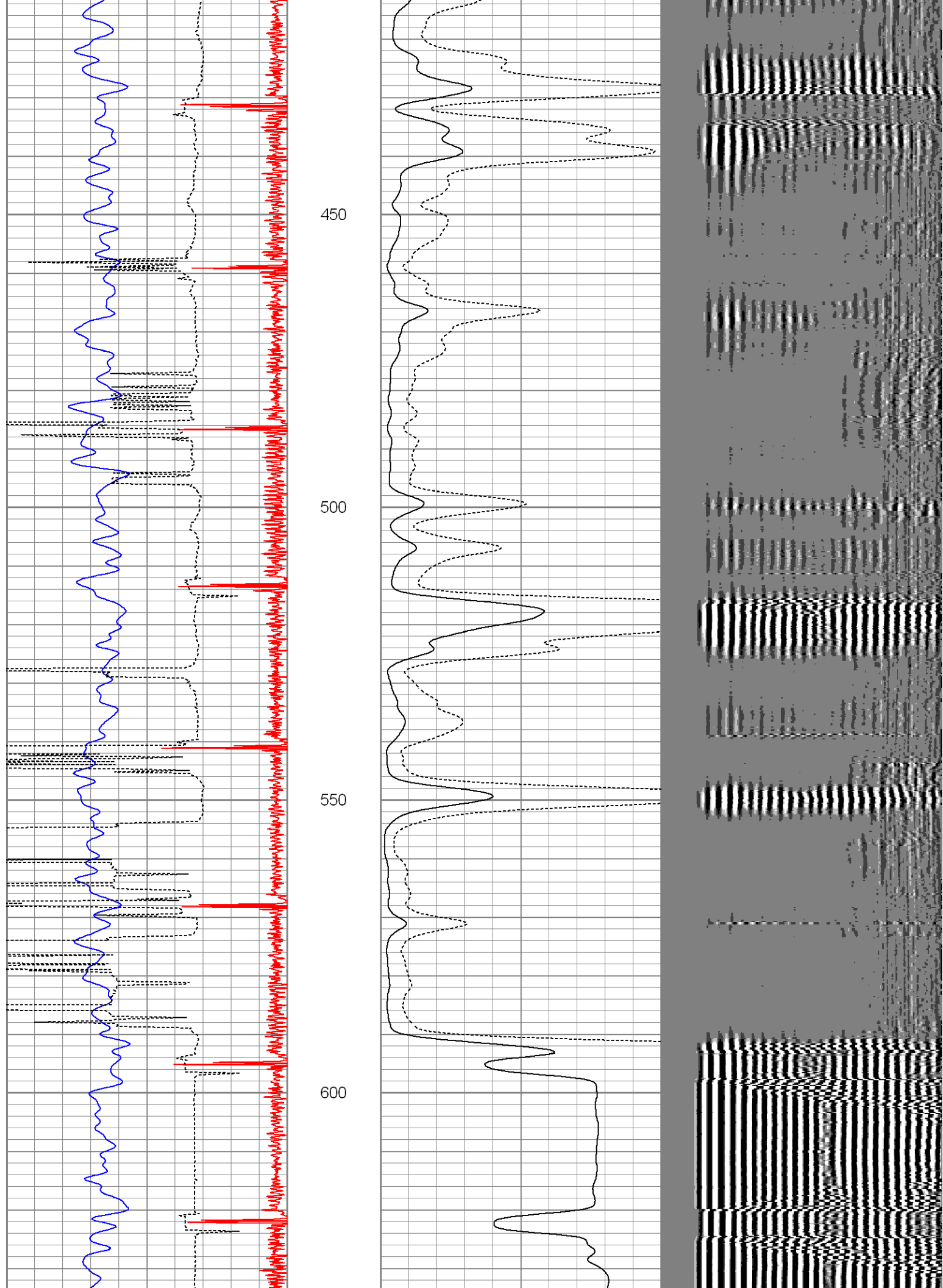
8	CCL	-0.3
0	Gamma Ray (GAPI)	200
340	TT3 (usec)	200

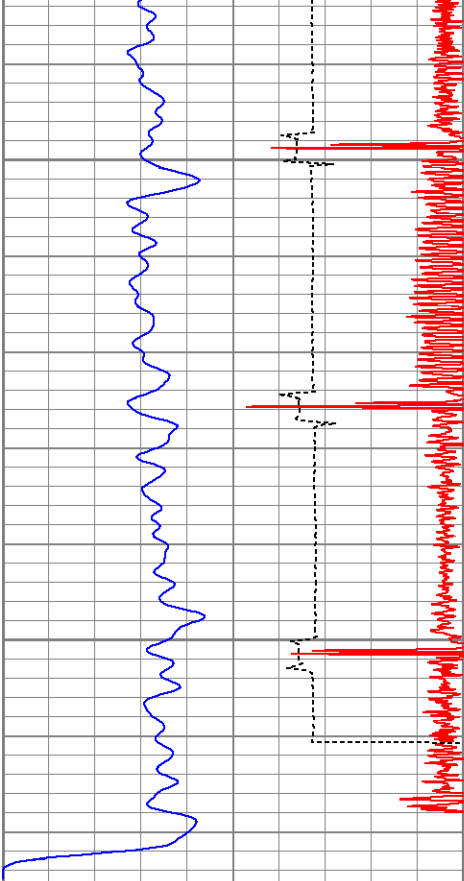
0	Amplified Amplitude (mV)	30
0	Amplitude (mV)	100

200 V D L 1200





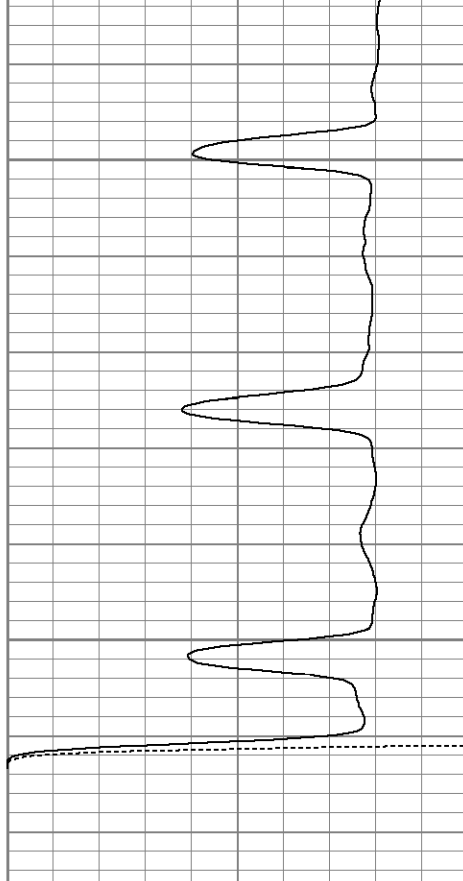




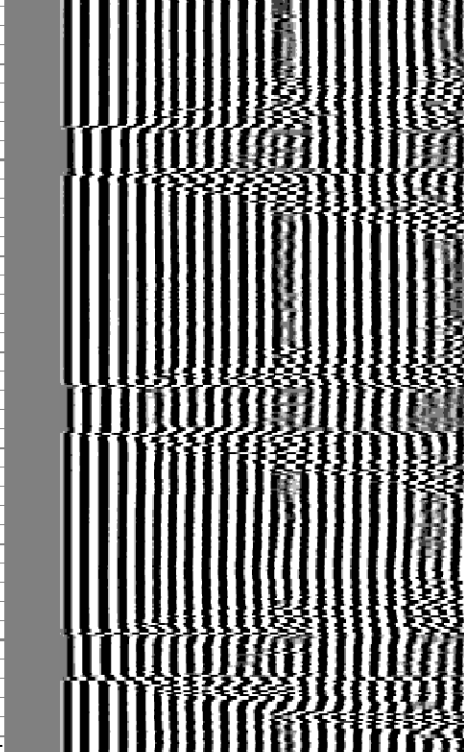
650

700

8	CCL	-0.3
0	Gamma Ray (GAPI)	200
340	TT3 (usec)	200



0	Amplified Amplitude (mV)	30
0	Amplitude (mV)	100



200	V D L	1200
-----	-------	------