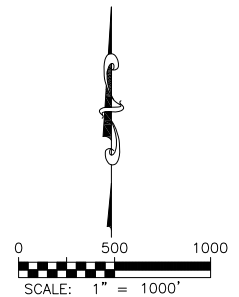
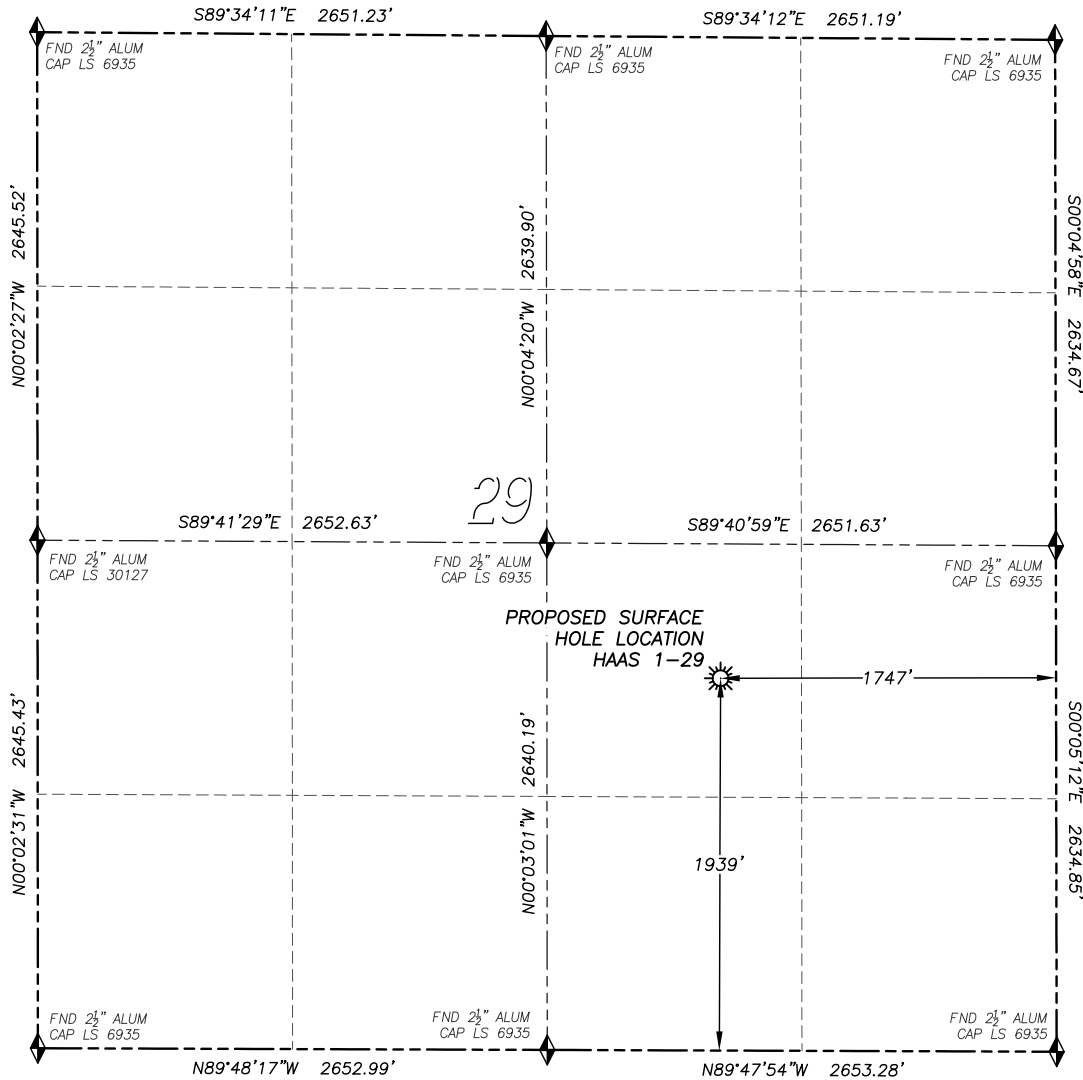


WELL LOCATION CERTIFICATE

HAAS 1-29

SECTION 29, TOWNSHIP 7 SOUTH, RANGE 62 WEST OF THE 6TH PRINCIPAL MERIDIAN



LEGEND

- FOUND MONUMENT AS DESCRIBED
- PROPOSED WELL
- EXISTING WELL
- BOTTOM HOLE
- ABANDONED WELL
- CALCULATED POSITION

NAD 83 LATITUDE AND LONGITUDE

HAAS 1-29 SURFACE HOLE:

LATITUDE: N39.40961°
 LONGITUDE: W104.35450°
 ELEVATION: 6166'
 FOOTAGE: 1939' FSL, 1747' FEL
 PDOP: 1.1
 QTR/QTR: NW4/SW4

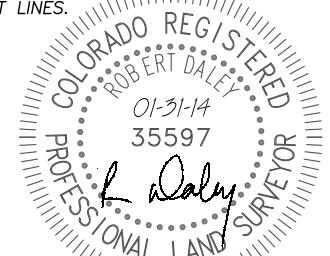
IN ACCORDANCE WITH A REQUEST FROM AGAVE OIL AND GAS LLC., DALEY LAND SURVEYING, INC. HAS DETERMINED THE SURFACE LOCATION OF THE HAAS 1-29 WELL TO BE 1939' FSL, 1747' FEL, AS MEASURED AT NINETY (90) DEGREES FROM THE SECTION LINES OF SECTION 29, TOWNSHIP 7 SOUTH, RANGE 62 WEST OF THE 6TH PRINCIPAL MERIDIAN, ELBERT COUNTY, COLORADO.

I HEREBY CERTIFY THAT THIS WELL LOCATION CERTIFICATE WAS PREPARED BY ME OR UNDER MY DIRECT SUPERVISION, THAT THE WORK WAS COMPLETED ON 01/27/2014 FOR AND ON BEHALF OF AGAVE OIL AND GAS LLC., AND THAT THIS MAP DOES NOT REPRESENT A BOUNDARY SURVEY, IT IS NOT A LAND SURVEY PLAT OR AN IMPROVEMENT SURVEY PLAT AND IT IS NOT TO BE RELIED UPON FOR THE ESTABLISHMENT OF FENCE, BUILDING OR OTHER FUTURE IMPROVEMENT LINES.

NOTES:

- 1) BEARINGS FOR THIS MAP ARE ASSUMED AND BASED UPON GPS OBSERVATIONS MADE BETWEEN MONUMENTS LOCATED AT THE NORTHEAST CORNER AND EAST QUARTER CORNER OF SECTION 29, T.7S., R.62W.
- 2) HORIZONTAL DATUM IS NAD83.
- 3) VERTICAL DATUM IS NAVD88 AND ORIGINATES FROM THE LOCAL C.O.R.S. NETWORK, UTILIZING THE GEOID12A MODEL.
- 4) SEE LOCATION DRAWING FOR VISIBLE IMPROVEMENTS WITHIN 500' OF PROPOSED DISTURBED AREA.
- 5) SURFACE USE: RANGELAND.
- 6) INST. OPERATOR: SCOTT ESTABROOKS

NEAREST EXISTING WELL:
 THERE ARE NO EXISTING
 WELLS IN THIS SECTION



FOR AND ON BEHALF OF
 DALEY LAND SURVEYING INC.,
 Robert Daley, PLS 35597