

**XTO ENERGY INC EBUSINESS
DO NOT MAIL - 382 ROAD 3100
AZTEC, New Mexico**

PCU T78X-12G10

H & P 215

Post Job Summary **Cement Production Casing**

Prepared for:
Date Prepared: 05/04/2012
Version: 1

Service Supervisor: PAUU, SEMISI

Submitted by: M.C Dube

HALLIBURTON

HALLIBURTON

Wellbore Geometry

Job Tubulars					MD		TVD		Shoe Joint Length ft
Type	Description	Size in	ID in	Wt lbm/ft	Top ft	Bottom ft	Top ft	Bottom ft	
Casing	4 1/2" Production Casing	4.50	3.826	15.10	0.00	13,521.00	0.00	13,611	92.23
Casing	7" Intermediate Casing	7.00	6.276	26.00	0.00	9,433.00	0.00	9,114.00	40.00
Open Hole Section	6 1/8" Open Hole		6.125		9,433.00	13,521.00	9,114.00	13,202.00	

Pumping Schedule

Fluid #	Fluid Type	Fluid Name	Surface Density lbm/gal	Surface Volume
1	Spacer	TUNED SPACER III	10.50	40.0 bbl
2	Cement Slurry	Foamed Lead Cement	14.30	500.0 sacks
3	Cement Slurry	Unfoamed Shoe Cement	14.30	60.0 sacks
4	Mud	Displacement Fluid	8.34	192.0 bbl
5	Cement Slurry	Cap Cement	14.80	200.0 sacks

HALLIBURTON

Fluids Pumped

Stage/Plug # 1 Fluid 1: TUNED SPACER III
TUNED SPACER III - SBM (483826)
30 lbm/bbl Tuned Spacer III
96.25 Barite
lbm/bbl

Fluid Density: 10.50 lbm/gal
Fluid Volume: 40.00 bbl
Pump Rate: 0.00 bbl/min

Stage/Plug # 1 Fluid 2: Foamed Lead Cement
ELASTISEAL (TM) SYSTEM
20 % SSA-1
0.3 % HR-601
1.5 % CHEM - FOAMER 760, TOTETANK

Fluid Weight: 14.30 lbm/gal
Slurry Yield: 1.47 ft³/sack
Total Mixing Fluid: 6.43 Gal
Surface Volume: 500.0 sacks
Sacks: 500.0 sacks
Calculated Fill: 6,262.00 ft
Calculated Top of Fluid: 6,759.00 ft
Estimated Top of Fluid:
Foam Weight: 11.00 lbm/gal
Foam Yield:
Downhole Volume: 139.98 bbl

Stage/Plug # 1 Fluid 3: Unfoamed Shoe
Cement
ELASTISEAL (TM) SYSTEM
20 % SSA-1
0.3 % HR-601

Fluid Weight: 14.30 lbm/gal
Slurry Yield: 1.47 ft³/sack
Total Mixing Fluid: 6.43 Gal
Surface Volume: 60.0 sacks
Sacks: 60.0 sacks
Calculated Fill: 500.00 ft
Calculated Top of Fluid: 13,021.00 ft
Estimated Top of Fluid:

Stage/Plug # 1 Fluid 4: Displacement Fluid

Fluid Density: 8.34 lbm/gal
Fluid Volume: 192.00 bbl
Pump Rate: 0.00 bbl/min
Fluid Gels:
Mud PV/YP:

Stage/Plug # 1 Fluid 5: Cap Cement
Cap Cement
94 lbm Premium Plus - Type III
6.3 Gal Fresh Water

Fluid Weight: 14.80 lbm/gal
Slurry Yield: 1.32 ft³/sack
Total Mixing Fluid: 6.30 Gal
Surface Volume: 200.0 sacks
Sacks: 200.0 sacks
Estimated Top of Fluid:
Pump Rate: 3.00 bbl/min

HALLIBURTON

Job Summary

Job Information

Job Start Date	4/29/2012 6:30:00 PM
Job MD	13,611.0 ft
Job TVD	13,390.0 ft
Height of Plug Container/Swage Above Rig Floor	10.0 ft
Surface Temperature at Time of Job	120 degF
Mud Type	Water Based Mud
Name of Mud Company	BAROID
Actual Mud Density	10 lbm/gal
Mud loss while running Casing	200.00 bbl
Time Circulated before job	8.00 hour(s)
Mud Volume Circulated	2,200.00 bbl
Rate at Which Well was Circulated	4.500 bbl/min
Pipe Movement During Hole Circulation	None
Time From End Mud Circ. to Job Start	480.00 minute
Pipe Movement During Cementing	None
Calculated Displacement	192.20 bbl
Job Displaced by (rig/halco)	Cement Unit HP Pumps

Cementing Equipment

Number of Centralizers Used	50
Pipe Centralization	Through Entire Cement Column
Brand of Float Equipment Used	Weatherford
Did Float Equipment Hold?	Yes
Plug set used?	Yes
Brand of Plug set used?	Weatherford
Did Plugs Bump?	Yes
Calculated Pressure to Bump Plugs	1,975.0 psig
Brand of Stage Cementing Tools Used	Weatherford

Service Supervisor Reports

Job Log

Date/Time	Chart #	Activity Code	Pump Rate	Cum Vol	Pressure (psig)	Comments
04/29/2012 06:00		Call Out				Crew called out to job.
04/29/2012 08:25		Pre-Convoy Safety Meeting				Met w/crew to discuss route, convoy order, and safety of travel.
04/29/2012 08:30		Depart from Service Center or Other Site				Entered into Journey Management
04/29/2012 10:22		Circulate Well	4		1000.0	4600 strokes gone, start to see mud back 42spm
04/29/2012 12:30		Arrive At Loc				Ended Journey Management - casing finished - rig circulating
04/29/2012 12:45		Safety Meeting - Assessment of Location				Met w/crew to discuss equipment layout, iron layout, and safety involved.
04/29/2012 12:55		Pre-Rig Up Safety Meeting				
04/29/2012 13:00		Rig-Up Equipment				
04/29/2012 15:46		Pre-Job Safety Meeting				Met w/crew, Co. Rep, and rig crew to discuss the job procedure, safety and hazards involved.
04/29/2012 16:00		Rig-Up Completed				
04/29/2012 16:18		Start Job				After Pre-Job Safety meeting
04/29/2012 18:19		Pressure Test			3000.0	Pressure Test Backside to 3000 psi- Test Good
04/29/2012 18:21		Test Lines				End Pressure Test, Held Pressure for 3 minutes Test Good
04/29/2012 18:25		Other				Pump 3bbl to Fill Lines
04/29/2012 18:29	5	Pressure Test			6000.0	Test Cmt and Nitrogen Lines, Cmt to 6000psi, N2 to 8000psi
04/29/2012 18:33	6	Pressure Test			8000.0	Test N2 Lines to 8000 psi - Test Good
04/29/2012 18:50	7	Pump Spacer				Pump 40bbl of TSIII @4bpm @10.5ppg actual Pump
04/29/2012 19:28	8	Pump Lead Cement				Pump 130bbl of 14.3ppg Lead Cmt 1.47ft3/sk 6.35gal/bbl

HALLIBURTON

Date/Time	Chart #	Activity Code	Pump Rate	Cum Vol	Pressure (psig)	Comments
04/29/2012 19:42	9	Shutdown				Shut Down Pumping because Re-circ Densometer Multifunctioning
04/29/2012 20:04	10	Resume				Resume Pumping after trying to Rectify the problem. Down for 22 minutes
04/29/2012 20:15	11	Shutdown				Shut Down and Roll Hole after establishing that the issues with pump truck could not be resolved.
04/29/2012 20:30		Circulate Well				Rig takes over circulating welll
04/29/2012 20:46		Circulate Well	3		830.0	Rig pumped 80bbl going at 4BPM
04/29/2012 21:15		Circulate Well	3.2		1000.0	1766 strokes gone rig pumping @ 30 spm
04/29/2012 21:22		Circulate Well	3.2		987.0	2200 stroke gone rig pumping @ 30 spm
04/29/2012 21:24		Circulate Well	3.2		1100.0	Disconnect Backside Transducer to run line to shaker and gas buster 30spm
04/29/2012 21:31		Circulate Well	3.2		966.0	2210 strokes gone, shut off line to pit re-route to the shaker 42spm
04/29/2012 21:44		Circulate Well	4		1090.0	2700 stroke gone, start to see spacer back to surface 42spm
04/29/2012 22:10		Circulate Well	4		1090.0	3810 strokes gone, start to see cmt to surface 42spm
04/29/2012 22:38		Slow Rate	3.2		900.0	4759 strokes gone, Clean Mud back to surface
04/30/2012 05:30		Other				Replacement pump truck arrives
04/30/2012 07:00		Other				Additional Cement Arrives
04/30/2012 08:00		Safety Meeting				Pre-Job Safety Meeting, Discuss Job Procedure, Hazards and Muster areas
04/30/2012 08:26		Other				Pump 2 bbls to fill lines.
04/30/2012 08:33		Test Lines			5542.0	Pressure Test Cement lines, to 6000 psi - hold while pressure test N2
04/30/2012 08:51		Test Lines				End Pressure Test
04/30/2012 08:53		Pump Spacer	4	40	211.0	30 sks Tuned Spacer @ 10.5 lbm/gal, 7.49 cuft/sk, 50.43 gal/sk

HALLIBURTON

Date/Time	Chart #	Activity Code	Pump Rate	Cum Vol	Pressure (psig)		Comments
04/30/2012 09:02		Shutdown					Shutdown / Mix Cement up to Weight before going downhole.
04/30/2012 09:08		Pump Lead Cement	2	130		163.0	500 sks Elastiseal Lead @ 14.3 lbm/gal (foamed to 11.0), 1.47 cuft/sk, 6.43 gal/sk
04/30/2012 09:10		Other	4			638.0	Bring on N2 @ autorate - Increase Rate
04/30/2012 09:17		Slow Rate	3			1367.0	Slow rate to keep density up - bulk delivery issues
04/30/2012 09:23		Other	3.5			1136.0	Increase rate to 3.5 bpm - keep it there for duration of job.
04/30/2012 09:50		Pump Tail Cement	3.5			1224.0	Shutdwon N2 (used 66356 scf) - Pump tail unfoamed - 60 sks Elastiseal @ 14.3 lbm/gal, 1.47 cuft/sk, 6.43 gal/sk.
04/30/2012 09:56		Shutdown					Shutdown / Drop Top Plug
04/30/2012 09:57		Clean Lines					Wash Pump & Lines to the pit
04/30/2012 10:03		Pump Displacement	5	192		636.0	Fresh Water Displacement - good returns
04/30/2012 10:30		Slow Rate	4			1747.0	Slow Rate to keep pressure down - returns slowed
04/30/2012 10:39		Slow Rate	2			2000.0	Slow Rate to bump Plug - returns approx. 1/4 bbl
04/30/2012 10:43		Bump Plug	2			2641.0	500 psi over final Circulation pressure.
04/30/2012 10:49		Check Floats				2683.0	Floats held - 2 bbls back
04/30/2012 11:15		Pump Cap Cement	4	47		500.0	200 sks Cap Cemet @ 14.8 lbm/gal, 1.32 cuft/sk, 6.30 gal/sk
04/30/2012 11:27		Clean Lines					Wash pump & lines - Clean Truck
04/30/2012 11:30		End Job					Finished Pumping - Check backside pressure after washing up - if pressure is low, then shutin backside & rig down.
04/30/2012 12:15		Shut In Well					Shut In Well per Co. Rep - Backside pressure = 90 psi.
04/30/2012 12:20		Post-Job Safety Meeting (Pre Rig-Down)					Met w/crew to discuss rigging down safely while rig gets ready to move.
04/30/2012 12:30		Rig-Down Equipment					Rig everything down.

HALLIBURTON

Date/Time	Chart #	Activity Code	Pump Rate	Cum Vol	Pressure (psig)		Comments
04/30/2012 13:50		Pre-Convoy Safety Meeting					Met w/crew to discuss journey home, hazards and safety.
04/30/2012 14:00		Depart Location for Service Center or Other Site					Called in Journey Management - Left Location
04/30/2012 14:00		Other					Thanks for using Halliburton!!!

The Road to Excellence Starts with Safety

Sold To #: 353810	Ship To #: 2919824	Quote #:	Sales Order #: 9450130
Customer: XTO ENERGY INC EBUSINESS	Customer Rep:		
Well Name: PCU	Well #: T78X-12G10	API/UWI #: 05-103-11727	
Field: PICEANC CREEK FIELD	City (SAP): MEEKER	County/Parish: Rio Blanco	State: Colorado
Contractor: H & P	Rig/Platform Name/Num: H&P 215		
Job Purpose: Cement Production Casing			
Well Type: Producing Well	Job Type: Cement Production Casing		
Sales Person: COLLINS, JAMES	Srvc Supervisor: PAUU, SEMISI	MBU ID Emp #: 445202	

Job Personnel

HES Emp Name	Exp Hrs	Emp #	HES Emp Name	Exp Hrs	Emp #	HES Emp Name	Exp Hrs	Emp #
ASHBY, ANDREW A	25.5	450544	BOWLES, DONALD Wayne	25.5	121749	DUBE, MTHOKOZISI	25.5	476241
FANKHAUSER, THOMAS Doughty	20.0	188282	FUCHS, JUSTIN Mark	11.5	509124	HARVEY, CORY	25.5	508253
HAWKINS, RANDALL	25.5	507406	HUNTER, SAMUEL David	25.5	479669	PAUU, SEMISI Tu'a	11.5	445202
POOLE, CHRIS	25.5	502978	PRICE, WILLIAM	25.5	434806	SLAUGH, CODY B	25.5	104465

Equipment

HES Unit #	Distance-1 way	HES Unit #	Distance-1 way	HES Unit #	Distance-1 way	HES Unit #	Distance-1 way
10897817	120 mile	10982742	120 mile	11023106	120 mile	11071581	120 mile
11139326	120 mile	11307428	120 mile	11338215	120 mile	11398321	120 mile
11410668	120 mile	11526496	120 mile				

Job Hours

Date	On Location Hours	Operating Hours	Date	On Location Hours	Operating Hours	Date	On Location Hours	Operating Hours
TOTAL								

Total is the sum of each column separately

Job

Job Times

Formation Name	Formation Depth (MD)	Top	Bottom	Form Type	Job depth MD	Job Depth TVD	Wk Ht Above Floor	Perforation Depth (MD)	From	To	Called Out	Date	Time	Time Zone
				BHST	13611. ft	13390. ft	10. ft					29 - Apr - 2012	06:00	MST
											On Location	29 - Apr - 2012	12:30	MST
											Job Started	29 - Apr - 2012	18:30	MST
											Job Completed	30 - Apr - 2012	11:00	MST
											Departed Loc	30 - Apr - 2012	14:00	MST

Well Data

Description	New / Used	Max pressure psig	Size in	ID in	Weight lbm/ft	Thread	Grade	Top MD ft	Bottom MD ft	Top TVD ft	Bottom TVD ft
6 1/8" Open Hole				6.125				9433.	13521.	9114.	13202.
4 1/2" Production Casing	Unknown		4.5	3.826	15.1		P-110	.	13521.	.	13202.
7" Intermediate Casing	Unknown		7.	6.276	26.		P-110	.	9433.	.	9114.

Tools and Accessories

Type	Size	Qty	Make	Depth	Type	Size	Qty	Make	Depth	Type	Size	Qty	Make
Guide Shoe					Packer					Top Plug			
Float Shoe					Bridge Plug					Bottom Plug			
Float Collar					Retainer					SSR plug set			
Insert Float										Plug Container			

Stage Tool										Centralizers			
------------	--	--	--	--	--	--	--	--	--	--------------	--	--	--

Miscellaneous Materials												
Gelling Agt		Conc		Surfactant		Conc		Acid Type		Qty		Conc %
Treatment Fld		Conc		Inhibitor		Conc		Sand Type		Size		Qty

Fluid Data

Stage/Plug #: 1									
Fluid #	Stage Type	Fluid Name	Qty	Qty uom	Mixing Density lbm/gal	Yield ft ³ /sk	Mix Fluid Gal/sk	Rate bbl/min	Total Mix Fluid Gal/sk
1	TUNED SPACER III	TUNED SPACER III - SBM (483826)	40.00	bbl	10.5	7.48	38.01	.0	
	37.82 gal/bbl	FRESH WATER							
	96.25 lbm/bbl	BARITE, BULK (100003681)							
2	Foamed Lead Cement	ELASTISEAL (TM) SYSTEM (450262)	500.0	sacks	14.3	1.47	6.43		6.43
	20 %	SAND-SSA-1 - SILICA FLOUR - 200 MESH, BULK (100003691)							
	0.3 %	HR-601, 50 LB BAG (101328348)							
	1.5 %	CHEM - FOAMER 760, TOTETANK (101664089)							
	6.431 Gal	FRESH WATER							
3	Unfoamed Shoe Cement	ELASTISEAL (TM) SYSTEM (450262)	60.0	sacks	14.3	1.47	6.43		6.43
	20 %	SAND-SSA-1 - SILICA FLOUR - 200 MESH, BULK (100003691)							
	0.3 %	HR-601, 50 LB BAG (101328348)							
	6.431 Gal	FRESH WATER							
4	Displacement Fluid		192.00	bbl	8.34			.0	
5	Cap Cement		200.0	sacks	14.8	1.32	6.3	3.0	6.3
	94 lbm	CMT - STANDARD TYPE III - FINE , BULK (100012229)							
	6.3 Gal	FRESH WATER							

Calculated Values		Pressures		Volumes			
Displacement		Shut In: Instant		Lost Returns		Cement Slurry	Pad
Top Of Cement		5 Min		Cement Returns		Actual Displacement	Treatment
Frac Gradient		15 Min		Spacers		Load and Breakdown	Total Job

Rates									
Circulating		Mixing		Displacement		Avg. Job			
Cement Left In Pipe	Amount	40 ft	Reason	Shoe Joint					
Frac Ring # 1 @	ID		Frac ring # 2 @	ID		Frac Ring # 3 @	ID		Frac Ring # 4 @

The Information Stated Herein Is Correct	Customer Representative Signature
--	-----------------------------------

HALLIBURTON

Lab Data

Job Information

Request/Slurry	232202/1	Rig Name	H&P 215	Date	22/APR/2012
Submitted By	Charli Brown	Job Type	Production Casing	Bulk Plant	Vernal
Customer	XTO	Location	Rio Blanco	Well	PCU T78X-12G10

Well Information

Casing/Liner Size	4 1/2"	Depth MD	13788 ft	BHST	291 F
Hole Size	6 1/8"	Depth TVD	13390 ft	BHCT	226 F

Drilling Fluid Information

Mud Supplier Name	Mud Trade Name	Density	10.0 PPG
-------------------	----------------	---------	----------

Cement Information - Lead Design

Conc	UOM	Cement/Additive	Sample Type	Sample Date	Lot No.	Cement Properties	
		ElastiSeal				Slurry Density	14.30 PPG
						Slurry Yield	1.46 ft3/sk
50	%	> Boral Craig Pozmix	Bulk	Apr 22, 2012	100003690	Water Requirement	6.32 GPS
50	%	> Mountain G	Bulk	Apr 22, 2012	100003685	Total Mix Fluid	6.32 GPS
100.00	% BWOC	Cement Blend	Bulk	Apr 22, 2012		Foam Density	10.999 PPG
						Foam Quality	22.84 %
5.000	lb/sk	Silicalite - Compacted	Bulk	Apr 22, 2012	OG180926-2		
0.100	% BWOC	VERSASET (PB)	Bulk	Apr 22, 2012	2-12-1-164		
20.000	% BWOC	SSA-1 (Silica Flour) - PB	Bulk	Apr 22, 2012	100003691		
0.300	% BWOC	HR-601	Bulk	Apr 22, 2012	HR09Y-24S3SM		
1.500	% BVOW	Foamer 760	Bulk	Mar 12, 2012	Mar 12, 2012		
6.32	gal/sack	Field (Fresh) Water	Lab	Mar 08, 2012	3/8/12		

Operation Test Results Request ID 232202/1

Thickening Time, Request Test ID:2418037

Temp (°F)	Pressure (psi)	Reached in (min)	Start BC	30 Bc (hh:mm)	50 Bc (hh:mm)	70 Bc (hh:mm)	Termination Time	Termination BC
226	7,834	48	4	02:17	02:18	02:18	02:40	96

Mixability (0 - 5) - 0 is not mixable, Request Test ID:2418038

Mixability rating (0 - 5)

5

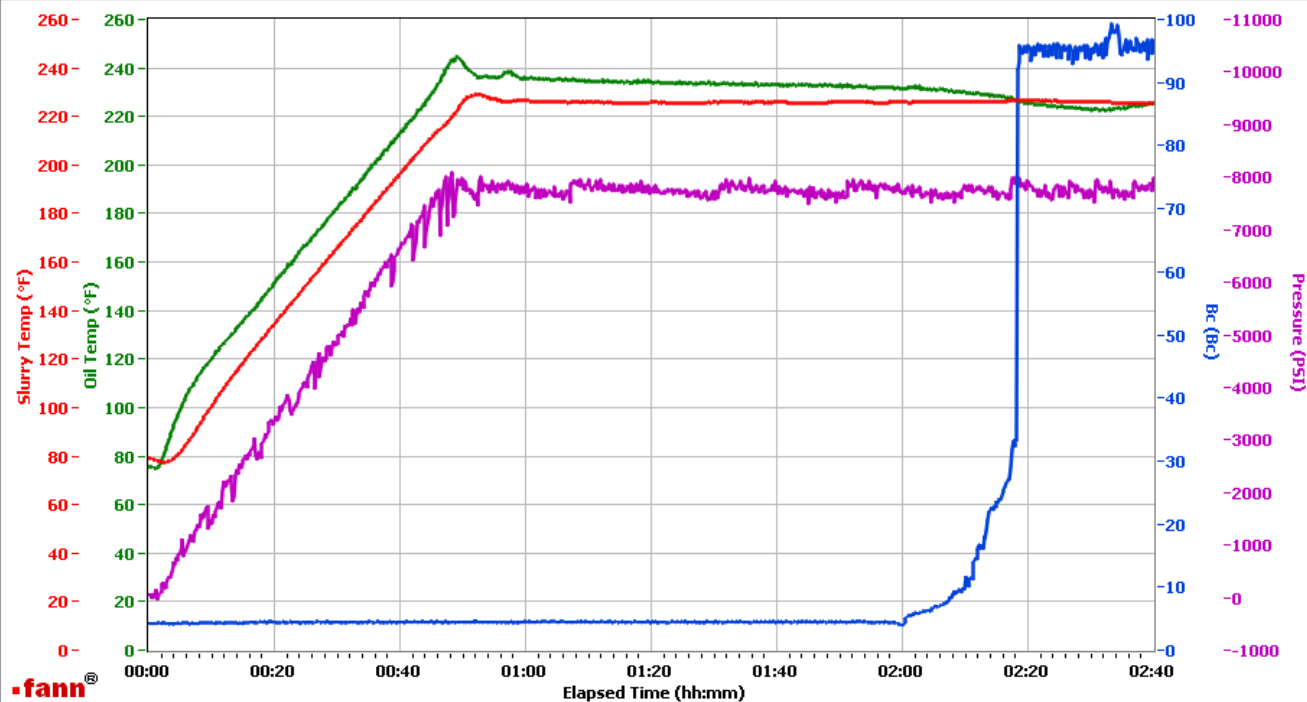
HALLIBURTON

Vernal

Fields	Values
Project Name	XTO
Test ID	232202-1
Request ID	HPHT 2
Tested by	ADF
Customer	XTO
Well No	PCU t88X-12G10
Rig	215
Casing/Liner Size	4.5

Fields	Values
Job Type	Pro Lead
Cement Type	G
Cement Weight	Standard
Test Date	04/23/12
Test Time	12:12 AM
Temp. Units	degF
Pressure Units	PSI
SW Version	2.0.2.206

Events	Results
30.00 Bc	02h:17m
50.00 Bc	02h:18m
70.00 Bc	02h:18m
100.00 Bc	NaN
00h:30m	4.34
01h:00m	4.49
01h:30m	4.39
02h:00m	4.00



Data File Z:\HPHT Data Files\Vernal Consistometer #2\XTO 232202-1.tdms

Comments 14.3 d, 1.46 y

HALLIBURTON

Job Information

Request/Slurry	232214/1	Rig Name	H&P 215	Date	22/APR/2012
Submitted By	Charli Brown	Job Type	Production Casing	Bulk Plant	Vernal
Customer	XTO	Location	Rio Blanco	Well	PCU T78X-12G10

Well Information

Casing/Liner Size	4 1/2"	Depth MD	13788 ft	BHST	291 F
Hole Size	6 1/8"	Depth TVD	13390 ft	BHCT	226 F

Drilling Fluid Information

Mud Supplier Name		Mud Trade Name		Density	10.0 PPG
--------------------------	--	-----------------------	--	----------------	----------

Cement Information - Tail Design

<u>Conc</u>	<u>UOM</u>	<u>Cement/Additive</u>	<u>Sample Type</u>	<u>Sample Date</u>	<u>Lot No.</u>	Cement Properties		
		ElastiSeal				Slurry Density	14.30	PPG
						Slurry Yield	1.46	ft3/sk
50	%	> Boral Craig Pozmix	Bulk	Apr 22, 2012	100003690	Water Requirement	6.32	GPS
50	%	> Mountain G	Bulk	Apr 22, 2012	100003685	Total Mix Fluid	6.32	GPS
100.00	% BWOC	Cement Blend						
5.000	lb/sk	Silicalite - Compacted	Bulk	Apr 22, 2012	OG180926-2			
0.100	% BWOC	VERSASET (PB)	Bulk	Apr 22, 2012	2-12-1-164			
20.000	% BWOC	SSA-1 (Silica Flour) - PB	Bulk	Apr 22, 2012	100003691			
0.300	% BWOC	HR-601	Bulk	Apr 22, 2012	HR09Y-24S3SM			
6.32	gal/sack	Field (Fresh) Water	Lab	Mar 08, 2012	3/8/12			

Operation Test Results Request ID 232214/1

Thickening Time, Request Test ID:2418138

Temp (°F)	Pressure (psi)	Reached in (min)	Start BC	30 Bc (hh:mm)	50 Bc (hh:mm)	70 Bc (hh:mm)	Termination Time	Termination BC
226	7,834	48	3	02:03	02:03	02:04	02:30	90

Mixability (0 - 5) - 0 is not mixable, Request Test ID:2418139

Mixability rating (0 - 5)

5

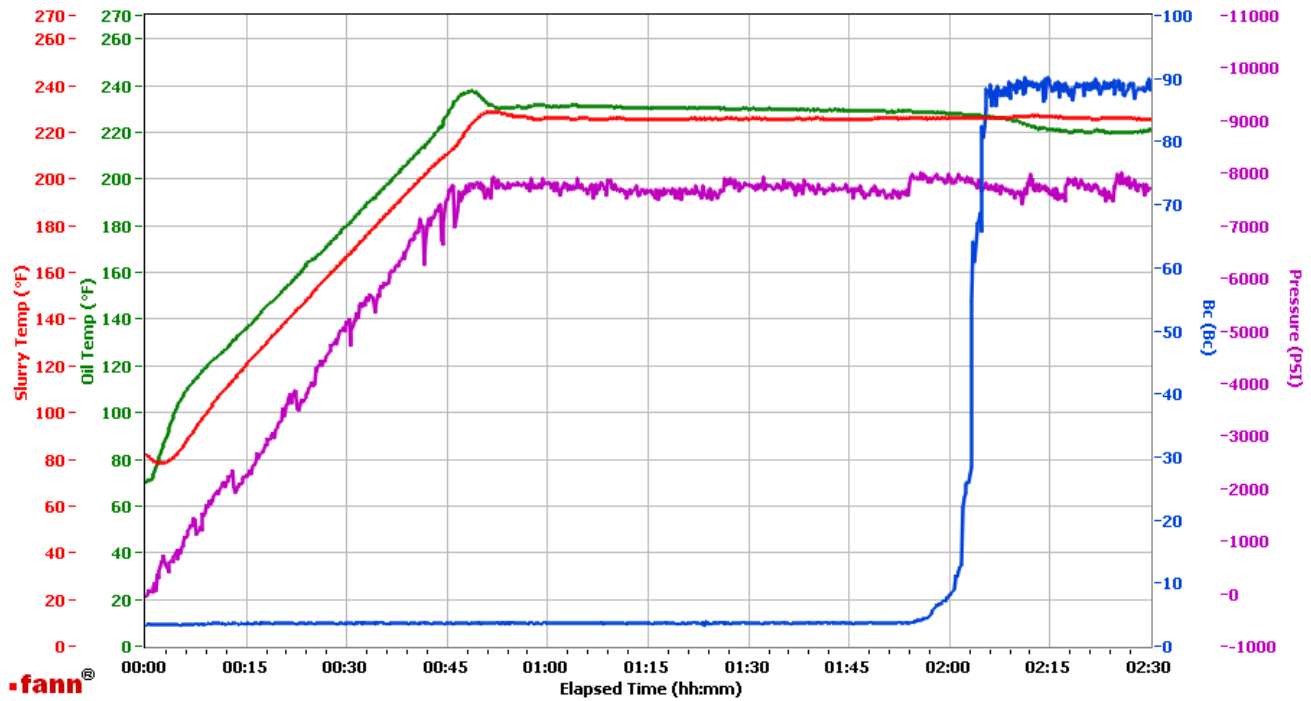
HALLIBURTON

Vernal

Fields	Values
Project Name	XTO
Test ID	232214-1
Request ID	HPHT 4
Tested by	ADF
Customer	XTO
Well No	PCU T78X-12G10
Rig	215
Casing/Liner Size	4.5

Fields	Values
Job Type	Pro Lead
Cement Type	G
Cement Weight	Standard
Test Date	04/23/12
Test Time	12:18 AM
Temp. Units	degF
Pressure Units	PSI
SW Version	2.0.2.206

Events	Results
30.00 Bc	02h:03m
50.00 Bc	02h:03m
70.00 Bc	02h:04m
100.00 Bc	NaN
00h:30m	3.56
01h:00m	3.55
01h:30m	3.73
02h:00m	8.05



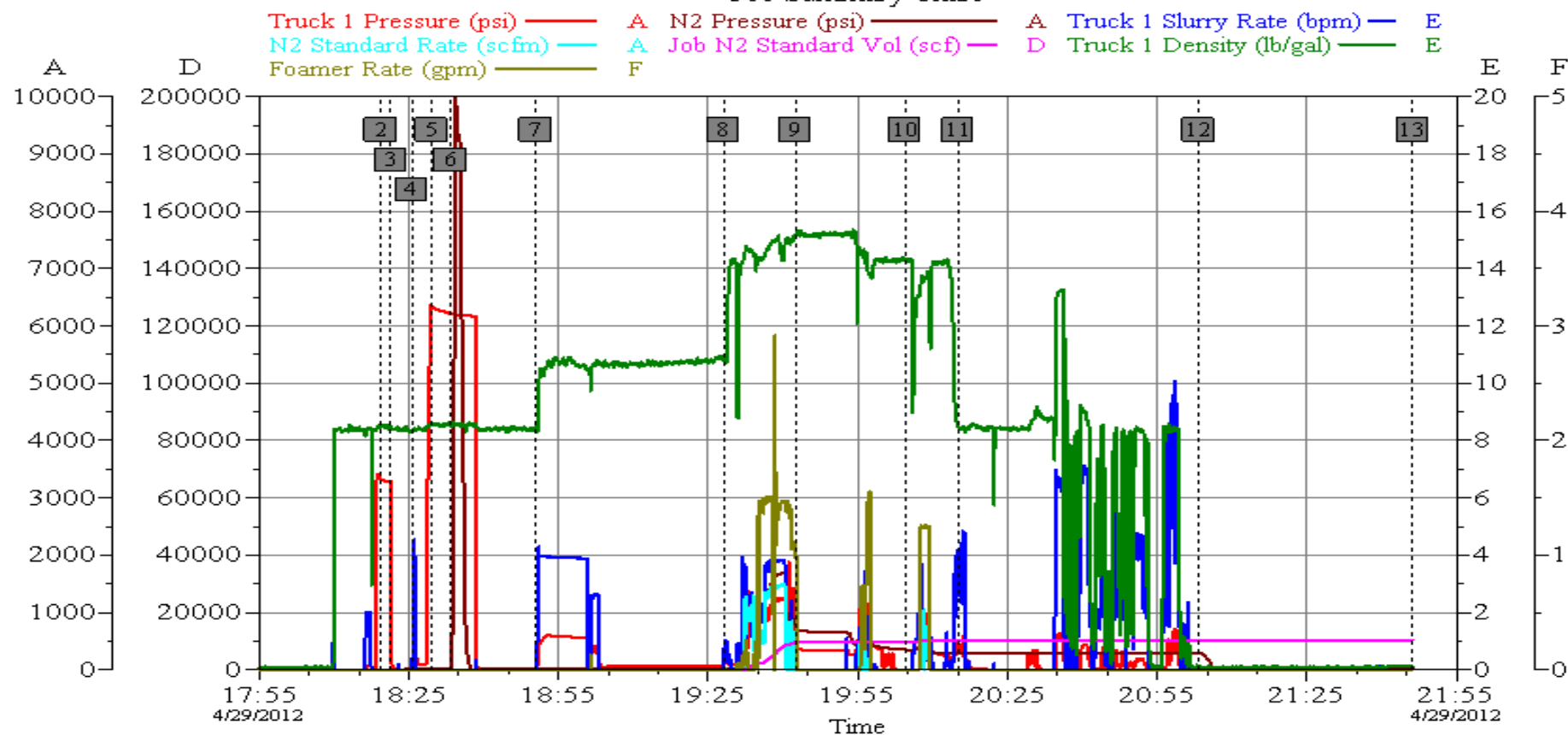
Data File O:\HPHT Data Files\Vernal Consistometer #4\XTO 232214-1.tdms

Comments 14.3 d, 1.46 y

HALLIBURTON

Data Acquisition

XTO Energy PCU T78X-12G10 Foam Production Job Summary Chart



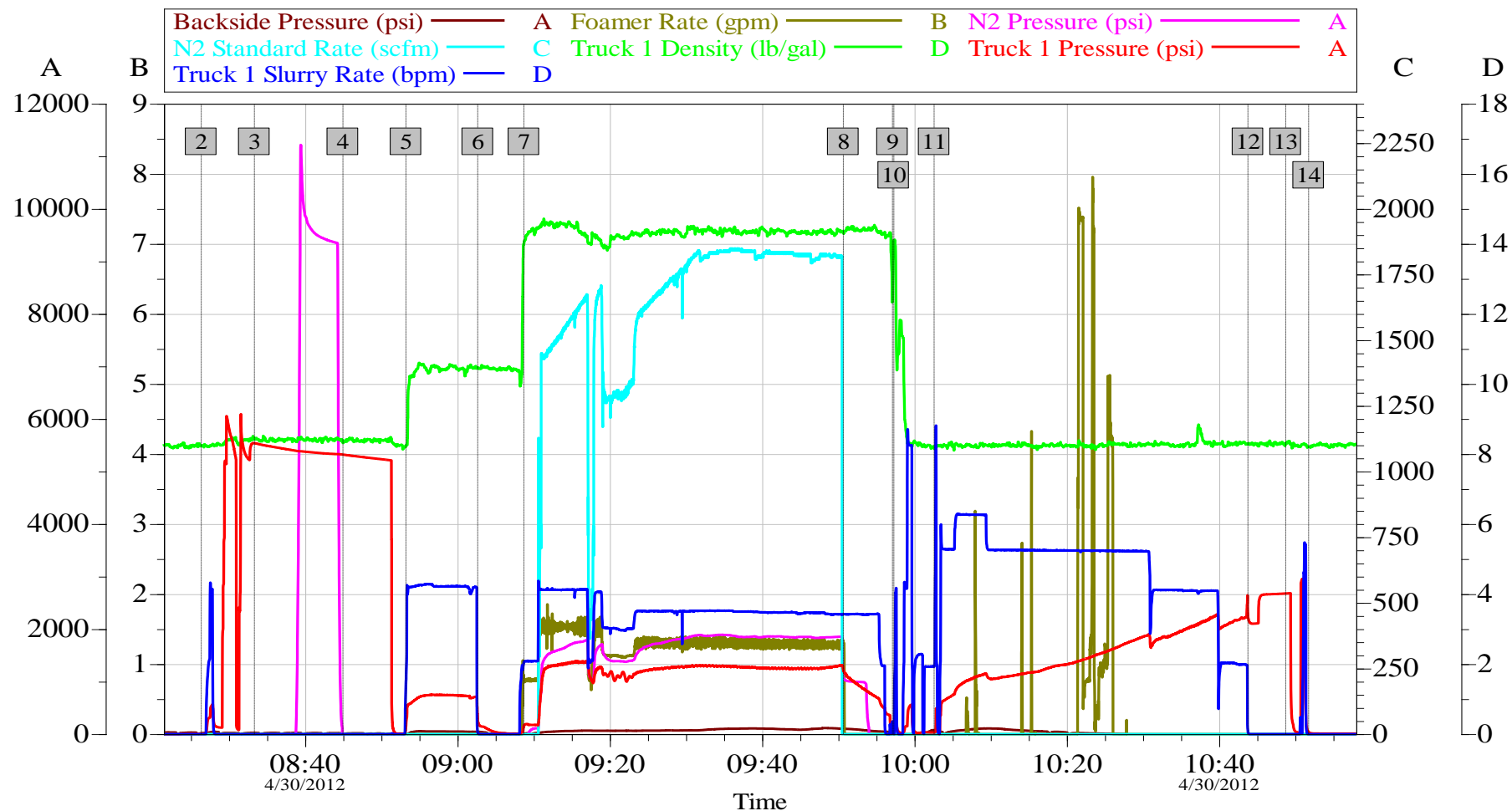
Customer: XTO ENERGY INC EBUSINESS
Well Description: PCU T78X 12G10

Job Date: 29-Apr-2012
UWI:

Sales Order #: 9450130

HALLIBURTON
OptiCem v6.4.10
29-Apr-12 22:47

XTO ENERGY PCU T78X-12G10 FOAM PRODUCTION JOB SUMMARY CHART



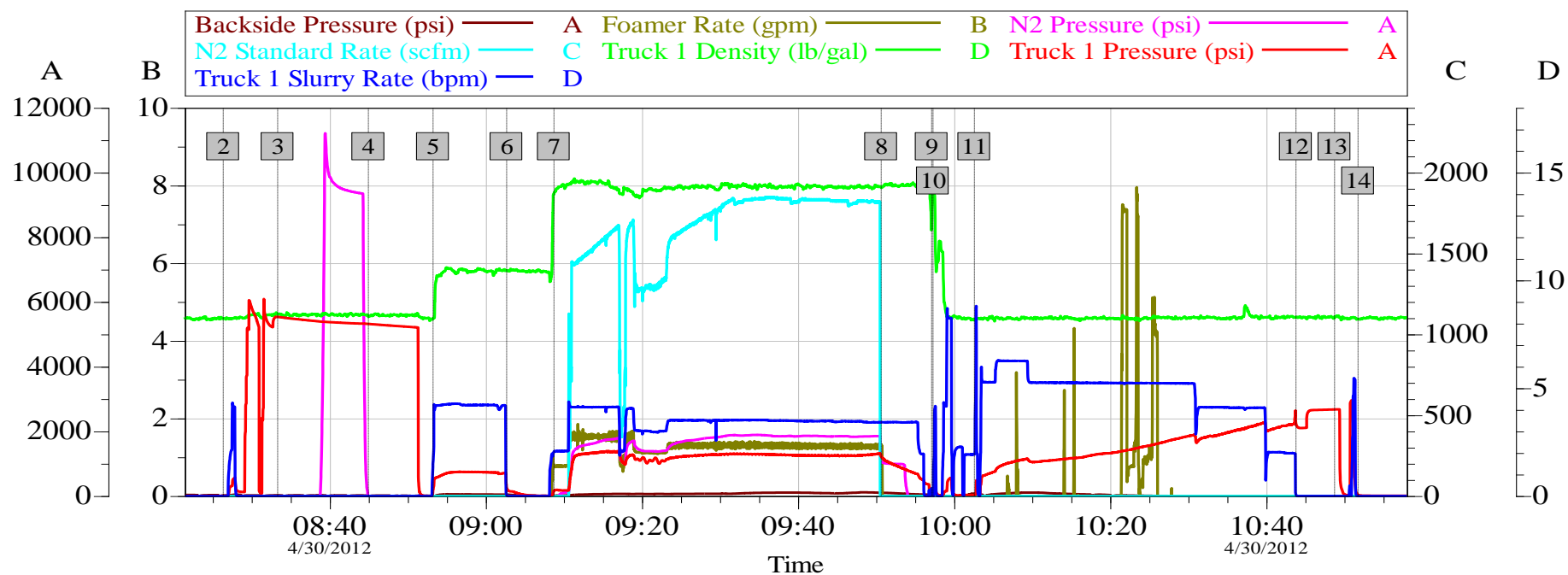
Customer: XTO ENERGY INC EBUSINESS
Well Description: PCU T78X 12G10
SVC LDR: Cody Slauch

Job Date: 30-Apr-2012
UWI: 05-103-11727
SVC SUP: Andrew Ashby

Sales Order #: 945013
Elite #: 11189139
SVC OPR: Sam Hunter

OptiCem v6.4.9
30-Apr-12 15:20

XTO ENERGY PCU T78X-12G10 FOAM PRODUCTION JOB SUMMARY CHART



Global Event Log

2	Start Job	08:26:21	3	Test Lines	08:33:20	4	End Pressure Test	08:44:57
5	Pump Spacer 1	08:53:15	6	Shutdown	09:02:39	7	Pump Lead Cement	09:08:44
8	Pump Tail Cement	09:50:39	9	Clean Lines	09:57:07	10	Clean Lines	09:57:17
11	Pump Displacement	10:02:35	12	Bump Plug	10:43:47	13	Check Floats	10:48:44
14	Re-Check Floats	10:51:45						

Customer: XTO ENERGY INC EBUSINESS
Well Description: PCU T78X 12G10

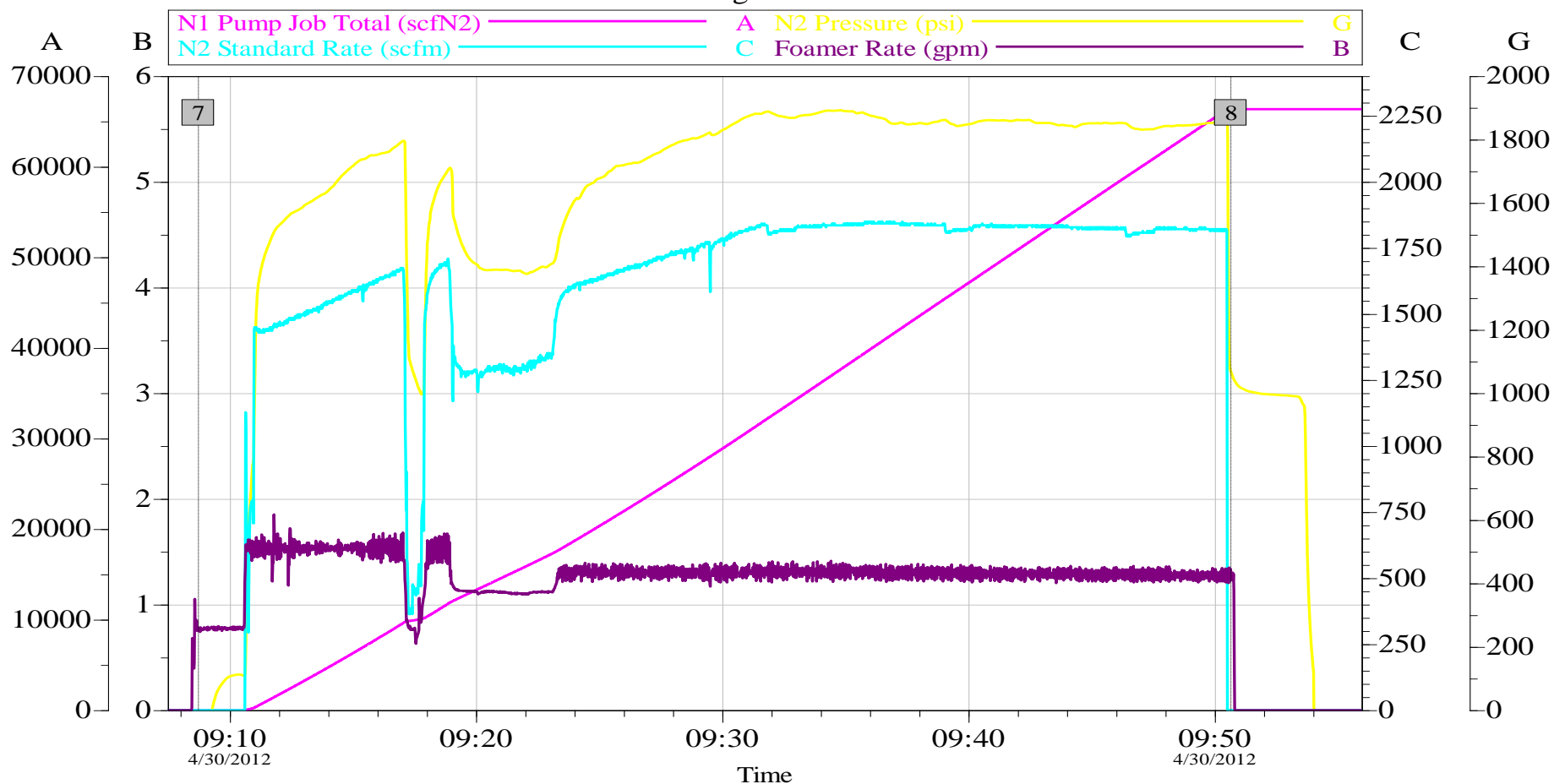
Job Date: 30-Apr-2012
UWI: 05-103-11727

Sales Order #: 945013
Elite #: 11189139

OptiCem v6.4.9
30-Apr-12 15:19

XTO ENERGY PCU T78X-12G10 FOAM PRODUCTION

Nitrogen Chart



Customer: XTO ENERGY INC EBUSINESS
Well Description: PCU T78X 12G10
SVC LDR: Cody Slaugh

Job Date: 30-Apr-2012
UWI: 05-103-11727
SVC SUP: Andrew Ashby

Sales Order #: 945013
Elite #: 11189139
SVC OPR: Sam Hunter

OptiCem v6.4.9
30-Apr-12 15:52