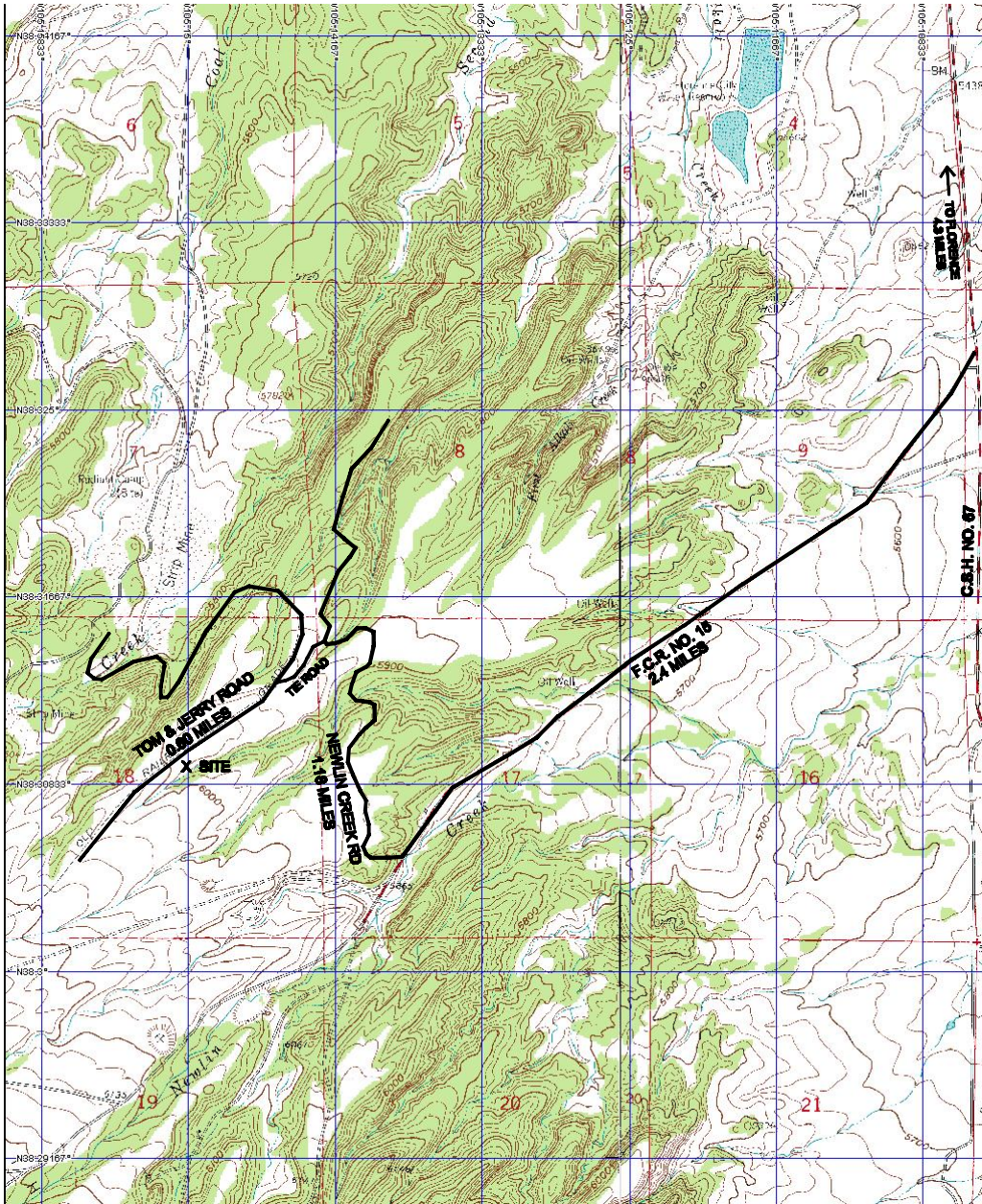


ACCESS ROAD

for AUS-TEX EXPLORATION INC - PATHFINDER C-18 #1

LOCATED IN THE NE 1/4 OF SECTION 18,
T. 20 S., R. 69 W. OF THE 6TH P.M.,
FREMONT COUNTY, COLORADO



NOT TO SCALE

ACCESS ROAD

**CORNERSTONE
LAND SURVEYING, LLC**

1022 PHAY AVE.
CANON CITY, COLORADO 81212
719-275-8881

MARCH 3, 2014

JOB # AUSTINEXP