

# MULTI WELL PLAN

for AUS-TEX EXPLORATION INC - PATHFINDER C-18 #1

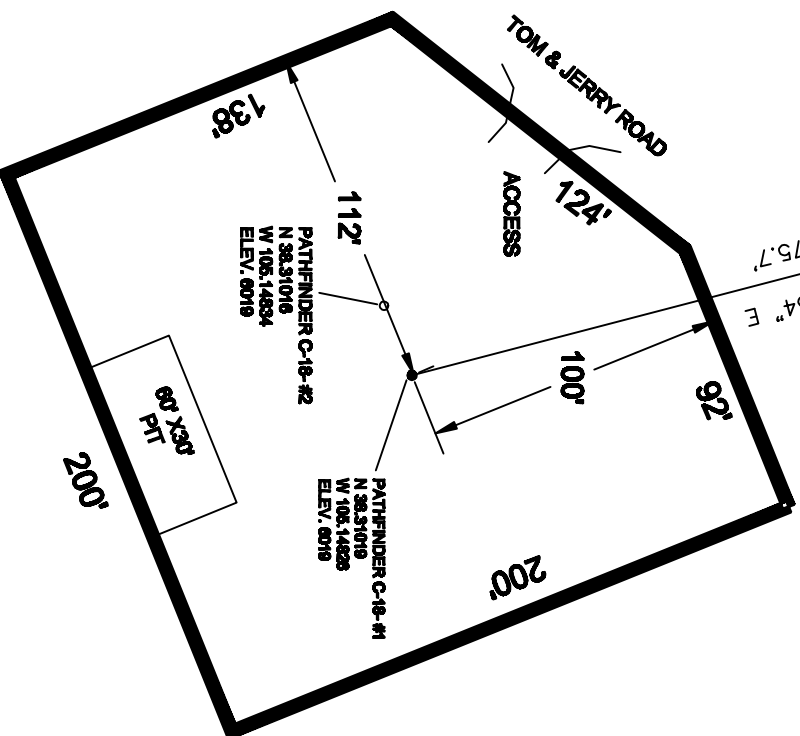
LOCATED IN THE NE 1/4 OF SECTION 18,  
T. 20 S., R. 89 W. OF THE 8TH P.M.,  
FREMONT COUNTY, COLORADO

38.311413  
-105.149863  
BOTTOM HOLE

S 14°35'34" E  
1675.7'



Scale 1" = 50'



PAD LAYOUT

CORNERSTONE  
LAND SURVEYING, LLC

1022 PHAY AVE.  
CANON CITY, COLORADO 81212  
719-276-8881  
MARCH 3, 2014 JOB # AUSTINEXP