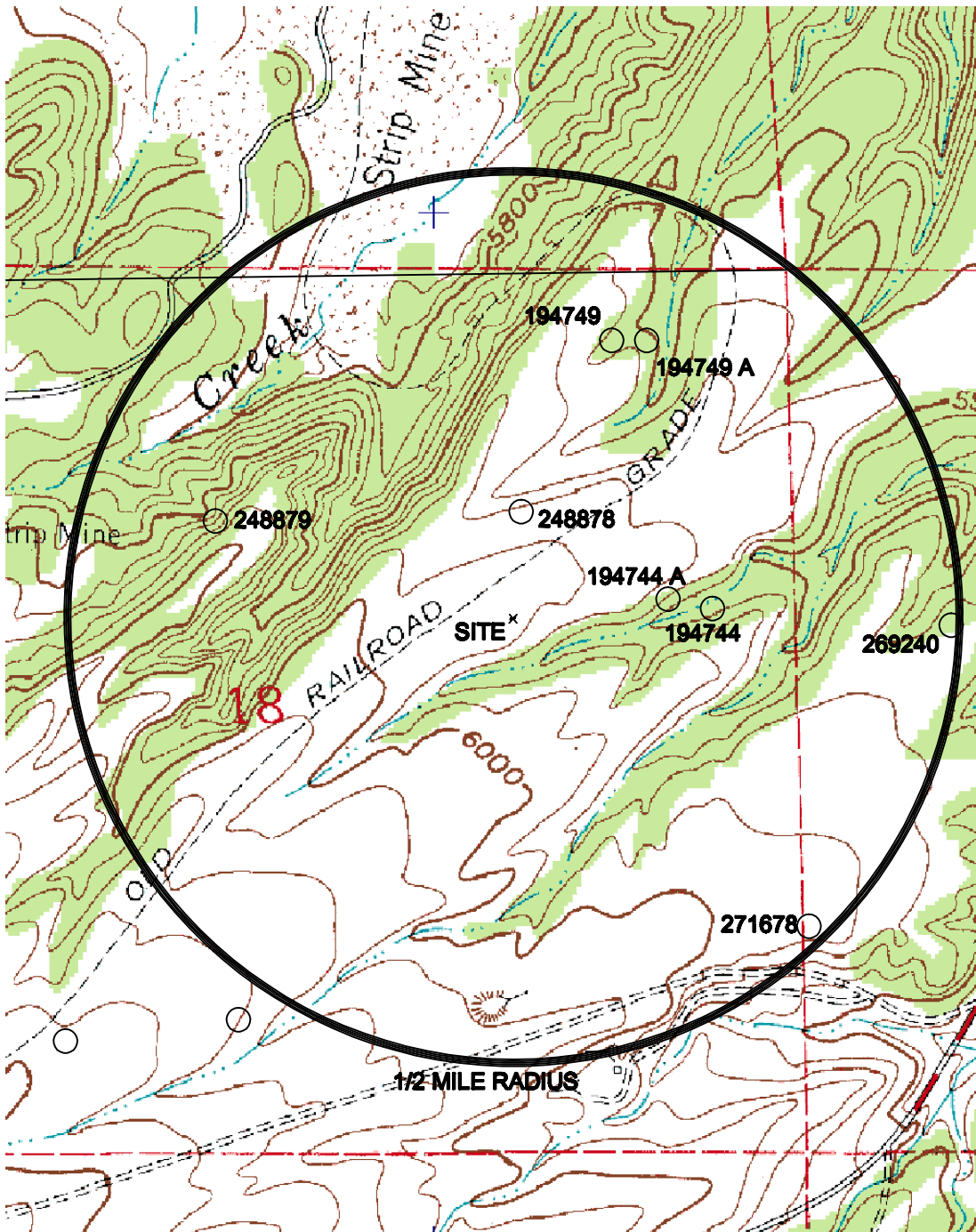


# WATERWELL LOCATIONS

for AUS-TEX EXPLORATION INC - PATHFINDER C-18 #1

LOCATED IN THE NE 1/4 OF SECTION 18,  
T. 20 S., R. 69 W. OF THE 6TH P.M.,  
FREMONT COUNTY, COLORADO



1000 0  
Scale 1" = 1000'

## WATER WELL LOCATIONS

**CORNERSTONE  
LAND SURVEYING, LLC**

1022 PHAY AVE.  
CANON CITY, COLORADO 81212  
719-275-8881

MARCH 3, 2014

JOB # AUSTINEXP