

1917 Brass Cap,  
0.9' High,  
Lat: 40.802542°  
Long: 103.765308°

T10N, R57W, 6th P.M.

1917 GLO Brass  
Cap, 1.7' High,  
Lat: 40.802622°  
Long: 103.755692°

2013 UELS Alum.  
Cap, 0.3' High,  
#28285  
Lat: 40.802722°  
Long: 103.746075°

WHITING OIL & GAS CORP.

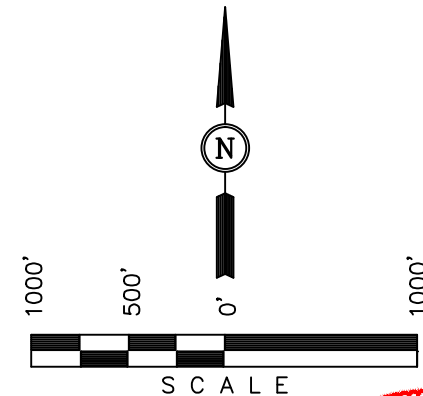
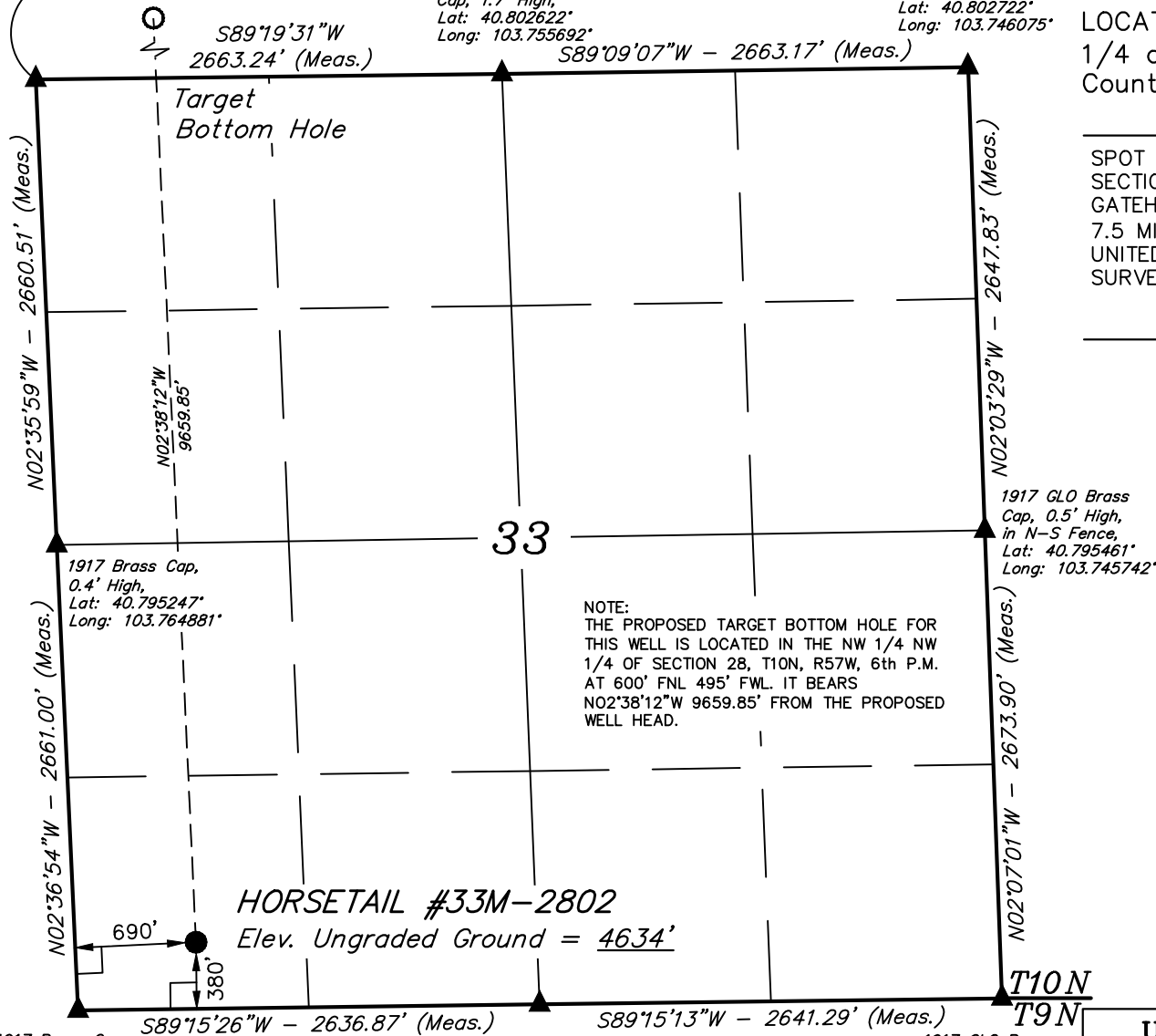
Well location, HORSETAIL #33M-2802 (SURFACE LOCATION), located as shown in the SW 1/4 SW 1/4 of Section 33, T10N, R57W, 6th P.M., Weld County, Colorado.

#### BASIS OF ELEVATION

SPOT ELEVATION LOCATED AT THE NORTHEAST CORNER OF SECTION 15, T9N, R58W, 6th P.M. TAKEN FROM THE GATEHOOK SPRING, QUADRANGLE, COLORADO, WELD COUNTY, 7.5 MINUTE QUAD (TOPOGRAPHIC MAP) PUBLISHED BY THE UNITED STATES DEPARTMENT OF THE INTERIOR, GEOLOGICAL SURVEY. SAID ELEVATION IS MARKED AS BEING 4679 FEET.

#### BASIS OF BEARINGS

BASIS OF BEARINGS IS A G.P.S. OBSERVATION.



#### CERTIFICATION

THIS IS TO CERTIFY THAT THE ABOVE PLAT WAS PREPARED FROM FIELD NOTES OF ACTUAL SURVEYS MADE BY ME OR UNDER MY SUPERVISION AND THAT THE SAME ARE TRUE AND CORRECT TO THE BEST OF MY KNOWLEDGE AND BELIEF.

REGISTERED LAND SURVEYOR  
REGISTRATION NO. 28285  
STATE OF COLORADO 09-05-13

1917 Brass Cap,  
1.0' High,  
Lat: 40.787953°  
Long: 103.764450°

1917 GLO Brass  
Cap, 0.8' High,  
Lat: 40.788042°  
Long: 103.754931°

1917 GLO Brass  
Cap, 0.3' High,  
Lat: 40.788128°  
Long: 103.745397°

UINTAH ENGINEERING & LAND SURVEYING  
85 SOUTH 200 EAST - VERNAL, UTAH 84078  
(435) 789-1017

#### LEGEND:

- └─┘ = 90° SYMBOL
- = PROPOSED WELL HEAD.
- ▲ = SECTION CORNERS LOCATED.

PDOP = 1.5

NAD 83 (SURFACE LOCATION)  
LATITUDE = 40°47'20.47" (40.789019)  
LONGITUDE = 103°45'43.27" (103.762019)  
NAD 27 (SURFACE LOCATION)  
LATITUDE = 40°47'20.52" (40.789033)  
LONGITUDE = 103°45'41.46" (103.761517)

SCALE 1" = 1000'	DATE SURVEYED: 08-21-13	DATE DRAWN: 08-26-13
PARTY J.H. C.M. B.D.H.	REFERENCES G.L.O. PLAT	
WEATHER HOT	FILE WHITING OIL & GAS CORP.	

T10N, R57W, 6th P.M.

WHITING OIL & GAS CORP.

1917 Brass Cap,  
0.2' High,  
Lat: 40.817133°  
Long: 103.765389°

1917 GLO Brass  
Cap, 0.5' High,  
Lat: 40.817200°  
Long: 103.755775°

1917 GLO Brass  
Cap, 0.5' High,  
Lat: 40.817236°  
Long: 103.746114°

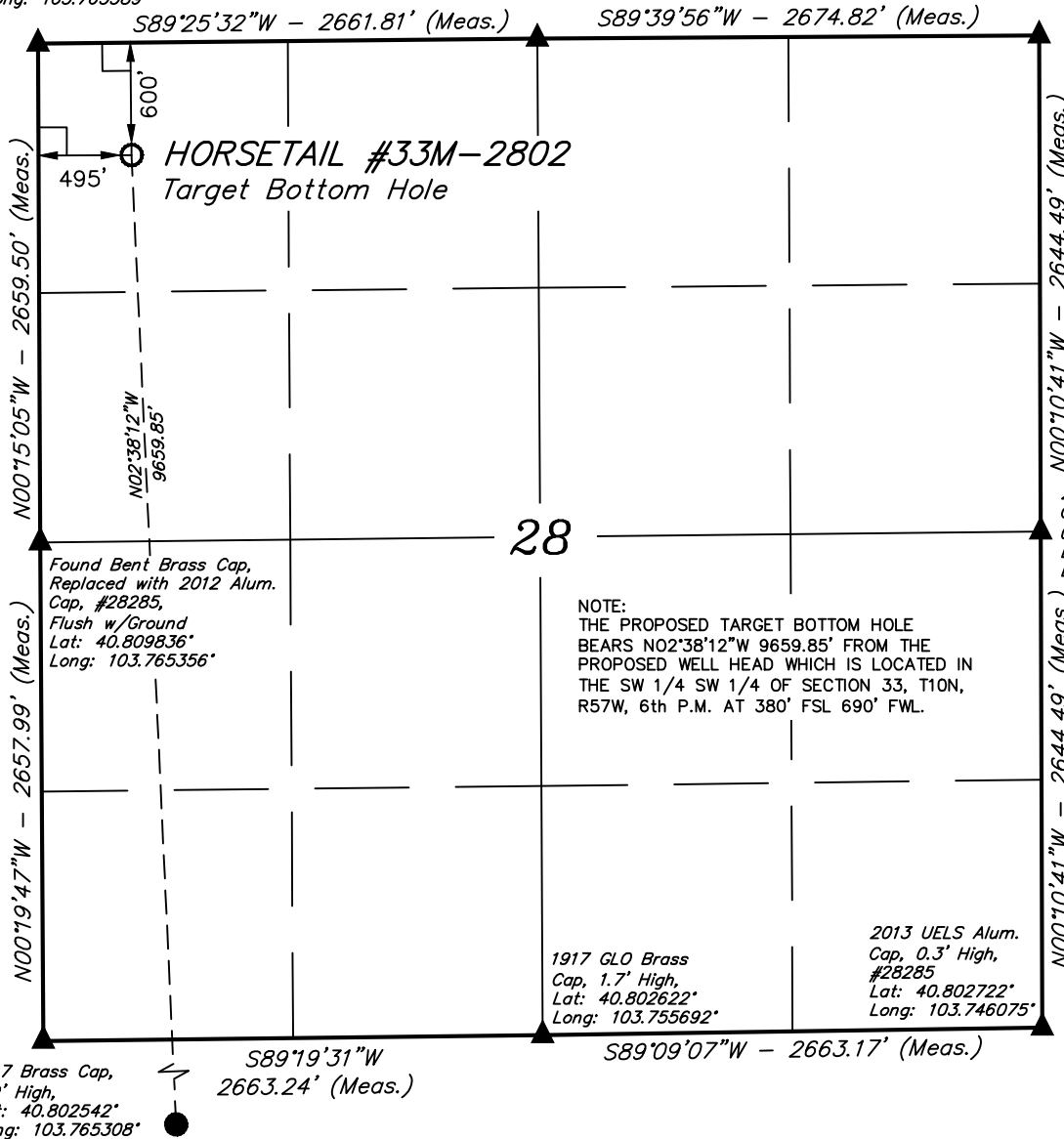
Well location, HORSETAIL #33M-2802 (TARGET  
BOTTOM HOLE), located as shown in the NW 1/4  
NW 1/4 of Section 28, T10N, R57W, 6th P.M.,  
Weld County, Colorado.

#### BASIS OF ELEVATION

SPOT ELEVATION LOCATED AT THE NORTHEAST CORNER OF  
SECTION 15, T9N, R58W, 6th P.M. TAKEN FROM THE  
GATEHOOK SPRING, QUADRANGLE, COLORADO, WELD COUNTY,  
7.5 MINUTE QUAD (TOPOGRAPHIC MAP) PUBLISHED BY THE  
UNITED STATES DEPARTMENT OF THE INTERIOR, GEOLOGICAL  
SURVEY. SAID ELEVATION IS MARKED AS BEING 4679 FEET.

#### BASIS OF BEARINGS

BASIS OF BEARINGS IS A G.P.S. OBSERVATION.



2013 UELS Alum.  
Cap, #28285,  
0.6' High  
Lat: 40.809978°  
Long: 103.746094°

NOTE:  
THE PROPOSED TARGET BOTTOM HOLE  
BEARS N02°38'12\"/>

1917 GLO Brass  
Cap, 1.7' High,  
Lat: 40.802622°  
Long: 103.755692°

2013 UELS Alum.  
Cap, 0.3' High,  
#28285  
Lat: 40.802722°  
Long: 103.746075°

1917 Brass Cap,  
0.9' High,  
Lat: 40.802542°  
Long: 103.765308°

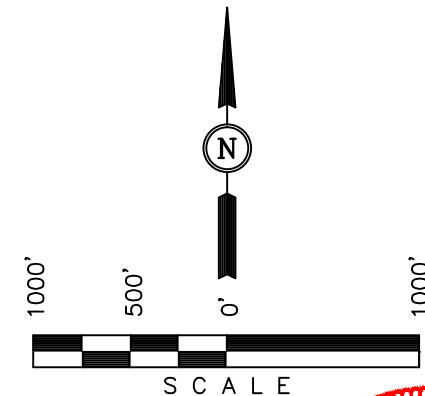
LEGEND: Surface Location

└─┘ = 90° SYMBOL

● = PROPOSED WELL HEAD.

▲ = SECTION CORNERS LOCATED.

NAD 83 (TARGET BOTTOM HOLE)	
LATITUDE	= 40°48'55.80" (40.815500)
LONGITUDE	= 103°45'48.94" (103.763594)
NAD 27 (TARGET BOTTOM HOLE)	
LATITUDE	= 40°48'55.85" (40.815514)
LONGITUDE	= 103°45'47.13" (103.763092)



#### CERTIFICATION

THIS IS TO CERTIFY THAT THE ABOVE PLAT WAS PREPARED FROM  
FIELD NOTES OF ACTUAL SURVEYS MADE BY ME OR UNDER MY  
SUPERVISION AND THAT THE SAME ARE TRUE AND CORRECT TO THE  
BEST OF MY KNOWLEDGE AND BELIEF.

REGISTERED LAND SURVEYOR  
REGISTRATION NO. 28285  
STATE OF COLORADO 09-05-13

UINTAH ENGINEERING & LAND SURVEYING  
85 SOUTH 200 EAST - VERNAL, UTAH 84078  
(435) 789-1017

SCALE 1" = 1000'	DATE SURVEYED: 08-21-13	DATE DRAWN: 08-26-13
PARTY J.H. C.M. B.D.H.	REFERENCES G.L.O. PLAT	
WEATHER HOT	FILE WHITING OIL & GAS CORP.	