

T10N, R57W, 6th P.M.

WHITING OIL & GAS CORP.

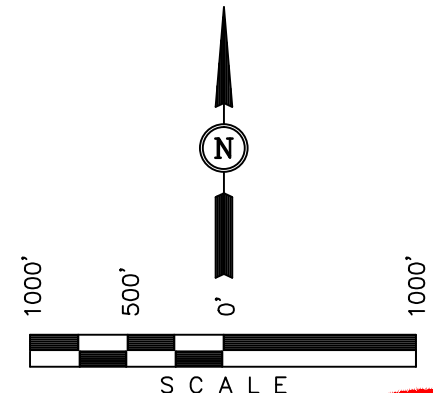
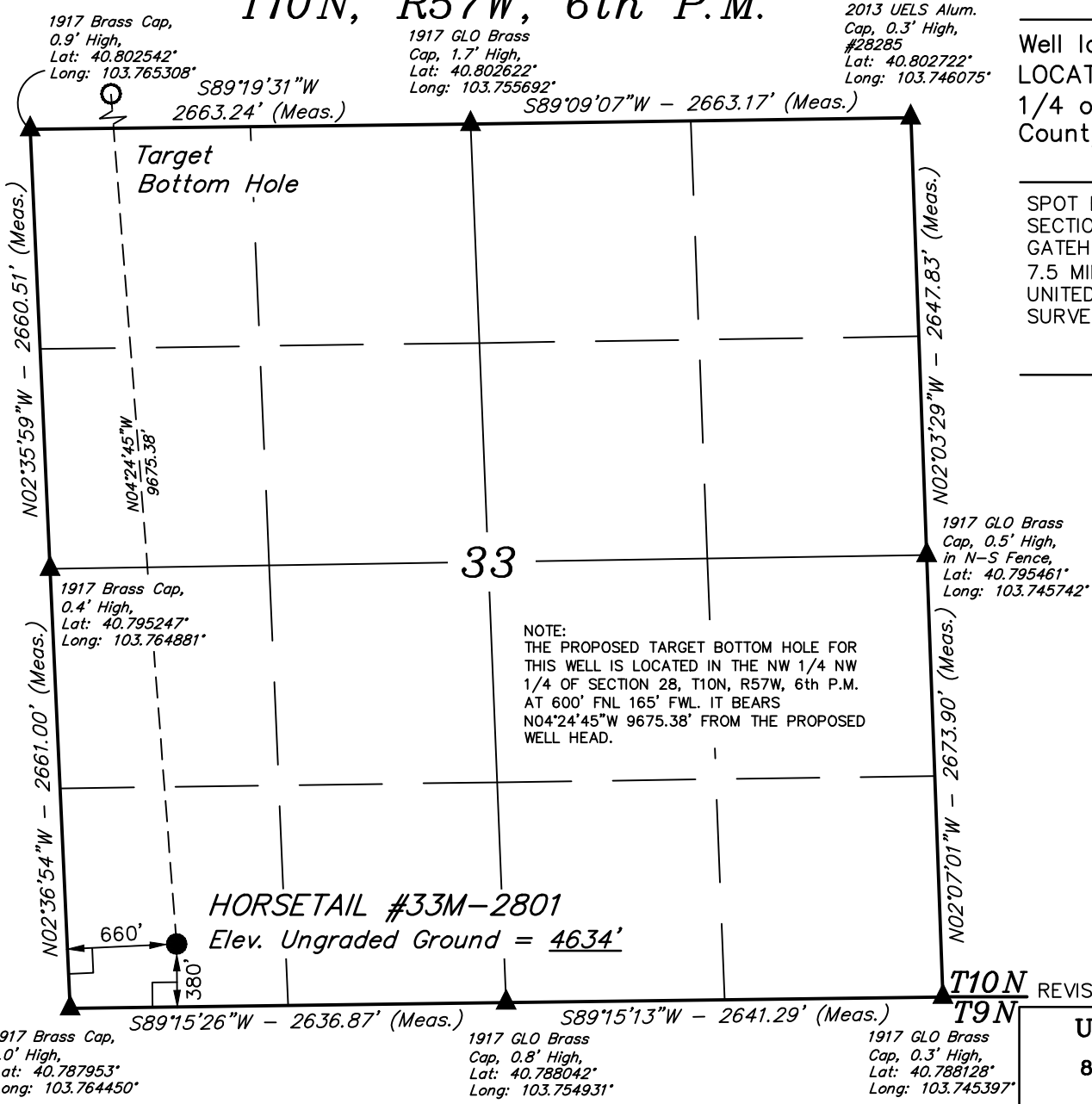
Well location, HORSETAIL #33M-2801 (SURFACE LOCATION), located as shown in the SW 1/4 SW 1/4 of Section 33, T10N, R57W, 6th P.M., Weld County, Colorado.

BASIS OF ELEVATION

SPOT ELEVATION LOCATED AT THE NORTHEAST CORNER OF SECTION 15, T9N, R58W, 6th P.M. TAKEN FROM THE GATEHOOK SPRING, QUADRANGLE, COLORADO, WELD COUNTY, 7.5 MINUTE QUAD (TOPOGRAPHIC MAP) PUBLISHED BY THE UNITED STATES DEPARTMENT OF THE INTERIOR, GEOLOGICAL SURVEY. SAID ELEVATION IS MARKED AS BEING 4679 FEET.

BASIS OF BEARINGS

BASIS OF BEARINGS IS A G.P.S. OBSERVATION.



CERTIFICATION
 THIS IS TO CERTIFY THAT THE ABOVE PLAT WAS PREPARED FROM FIELD NOTES OF ACTUAL SURVEYS MADE BY ME OR UNDER MY SUPERVISION AND THAT THE SAME ARE TRUE AND CORRECT TO THE BEST OF MY KNOWLEDGE AND BELIEF.
 REGISTERED LAND SURVEYOR
 REGISTRATION NO. 28285
 STATE OF COLORADO
 J. S. JONES
 10-24-13

REVISED: 10-24-13 J.S.

- LEGEND:**
- └─┘ = 90° SYMBOL
 - = PROPOSED WELL HEAD.
 - ▲ = SECTION CORNERS LOCATED.

PDOP = 1.3	
NAD 83 (SURFACE LOCATION)	
LATITUDE = 40°47'20.46" (40.789017)	
LONGITUDE = 103°45'43.66" (103.762128)	
NAD 27 (SURFACE LOCATION)	
LATITUDE = 40°47'20.52" (40.789033)	
LONGITUDE = 103°45'41.85" (103.761625)	

UINTAH ENGINEERING & LAND SURVEYING 85 SOUTH 200 EAST - VERNAL, UTAH 84078 (435) 789-1017			
SCALE 1" = 1000'	DATE SURVEYED: 08-21-13	DATE DRAWN: 08-26-13	
PARTY J.H. C.M. B.D.H.	REFERENCES G.L.O. PLAT		
WEATHER HOT	FILE WHITING OIL & GAS CORP.		

T10N, R57W, 6th P.M.

WHITING OIL & GAS CORP.

1917 Brass Cap,
0.2' High,
Lat: 40.817133°
Long: 103.765389°

1917 GLO Brass
Cap, 0.5' High,
Lat: 40.817200°
Long: 103.755775°

1917 GLO Brass
Cap, 0.5' High,
Lat: 40.817236°
Long: 103.746114°

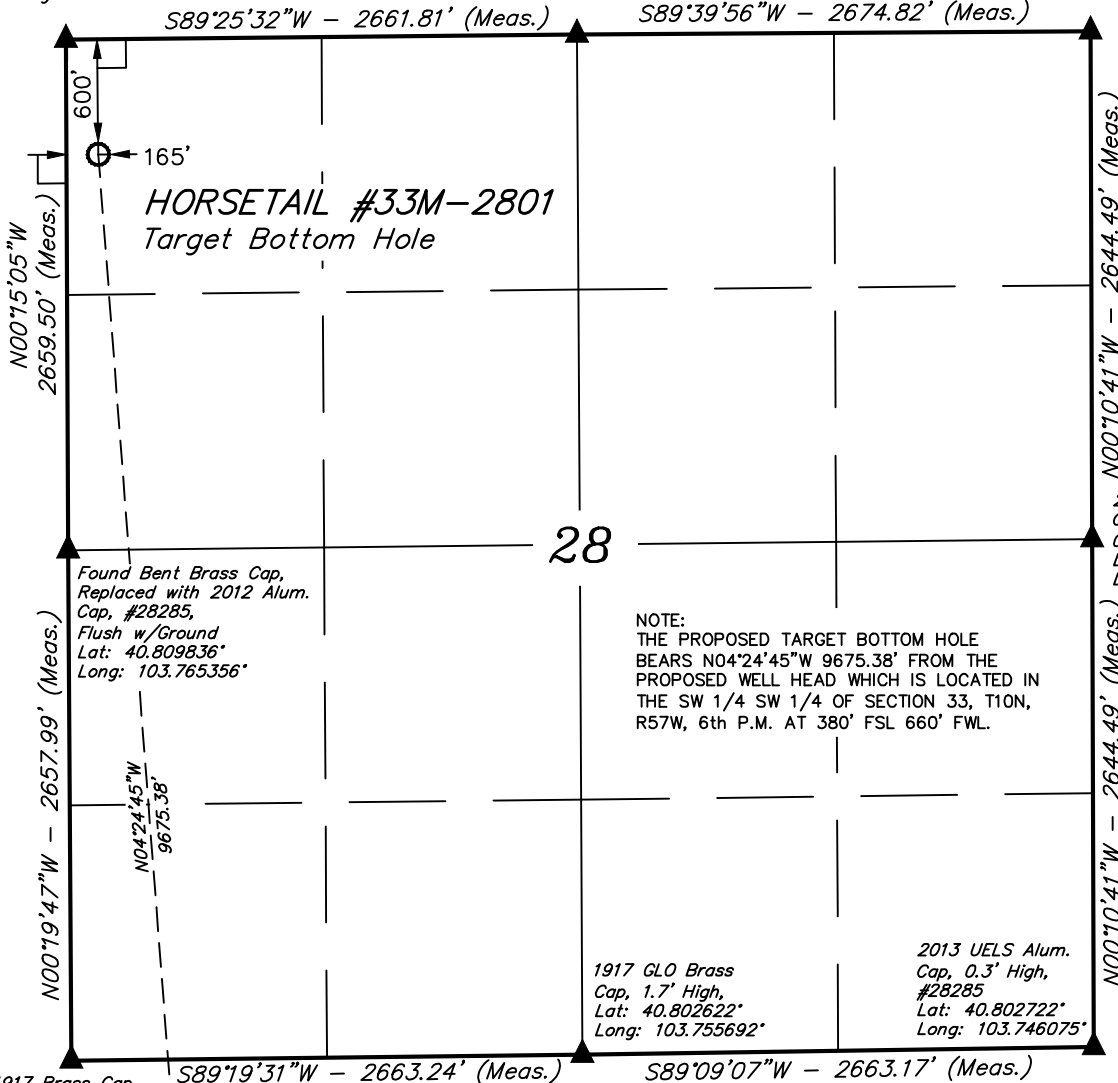
Well location, HORSETAIL #33M-2801 (TARGET BOTTOM HOLE), located as shown in the NW 1/4 NW 1/4 of Section 28, T10N, R57W, 6th P.M., Weld County, Colorado.

BASIS OF ELEVATION

SPOT ELEVATION LOCATED AT THE NORTHEAST CORNER OF SECTION 15, T9N, R58W, 6th P.M. TAKEN FROM THE GATEHOOK SPRING, QUADRANGLE, COLORADO, WELD COUNTY, 7.5 MINUTE QUAD (TOPOGRAPHIC MAP) PUBLISHED BY THE UNITED STATES DEPARTMENT OF THE INTERIOR, GEOLOGICAL SURVEY. SAID ELEVATION IS MARKED AS BEING 4679 FEET.

BASIS OF BEARINGS

BASIS OF BEARINGS IS A G.P.S. OBSERVATION.



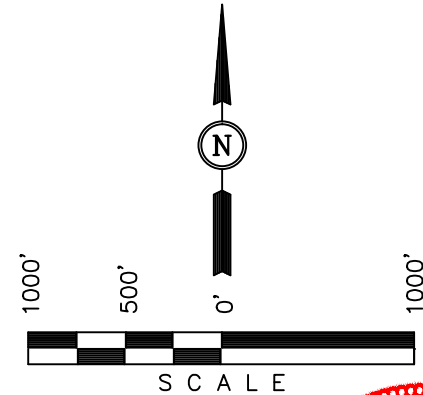
2013 UELS Alum.
Cap, #28285,
0.6' High
Lat: 40.809978°
Long: 103.746094°

NOTE:
THE PROPOSED TARGET BOTTOM HOLE BEARS N04°24'45\"W 9675.38' FROM THE PROPOSED WELL HEAD WHICH IS LOCATED IN THE SW 1/4 SW 1/4 OF SECTION 33, T10N, R57W, 6th P.M. AT 380' FSL 660' FWL.

1917 GLO Brass
Cap, 1.7' High,
Lat: 40.802622°
Long: 103.755692°

2013 UELS Alum.
Cap, 0.3' High,
#28285
Lat: 40.802722°
Long: 103.746075°

1917 Brass Cap,
0.9' High,
Lat: 40.802542°
Long: 103.765308°



CERTIFICATION

THIS IS TO CERTIFY THAT THE ABOVE PLAT WAS PREPARED FROM FIELD NOTES OF ACTUAL SURVEYS MADE BY ME OR UNDER MY SUPERVISION AND THAT THE SAME ARE TRUE AND CORRECT TO THE BEST OF MY KNOWLEDGE AND BELIEF.

REGISTERED LAND SURVEYOR
REGISTRATION NO. 28285
STATE OF COLORADO 09-05-13

UINTAH ENGINEERING & LAND SURVEYING
85 SOUTH 200 EAST - VERNAL, UTAH 84078
(435) 789-1017

LEGEND: Surface Location

- └─┘ = 90° SYMBOL
- = PROPOSED WELL HEAD.
- ▲ = SECTION CORNERS LOCATED.

NAD 83 (TARGET BOTTOM HOLE)	
LATITUDE	= 40°48'55.77" (40.815492)
LONGITUDE	= 103°45'53.23" (103.764786)
NAD 27 (TARGET BOTTOM HOLE)	
LATITUDE	= 40°48'55.82" (40.815506)
LONGITUDE	= 103°45'51.42" (103.764283)

SCALE 1" = 1000'	DATE SURVEYED: 08-21-13	DATE DRAWN: 08-26-13
PARTY J.H. C.M. B.D.H.	REFERENCES G.L.O. PLAT	
WEATHER HOT	FILE WHITING OIL & GAS CORP.	