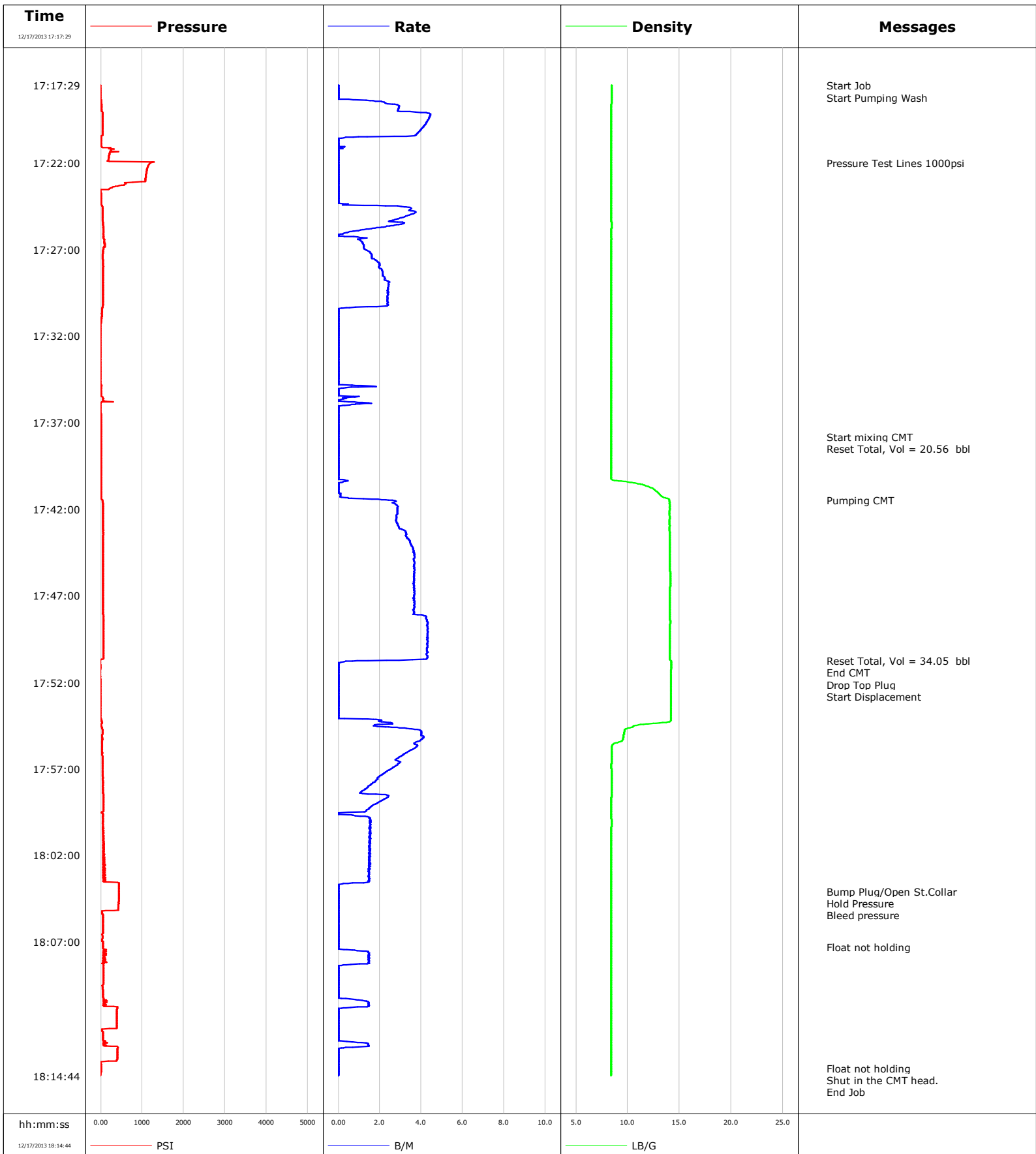


Well	Big Sky	Client	Nighthawk
Field	DJ	SIR No.	CMI1-00397
Engineer	Chris Valerio	Job Type	Surface
Country	United States	Job Date	12-17-2013



				Customer			Job Number			
				Nighthawk			CMI1-00397			
Well		Location (legal)			Schlumberger Location			Job Start		
Big Sky 13-11								Dec/17/2013		
Field		Formation Name/Type			Deviation	Bit Size		Well MD	Well TVD	
DJ					deg	12.3 in		338.0 ft	338.0 ft	
County		State/Province			BHP	BHST	BHCT	Pore Press. Gradient		
Lincoln		CO			psi	84 degF	80 degF	lb/gal		
Well Master		API/UWI								
0631486427										
Rig Name	Drilled For		Service Via		Casing/Liner					
Spud Rig	Oil		Land		Depth, ft	Size, in	Weight, lb/ft	Grade	Thread	
Offshore Zone	Well Class		Well Type		338.0	8.6	24.0	J55	8RD	
	New		Development		0.0	0.0	0.0			
Drilling Fluid Type		Max. Density	Plastic Viscosity		Tubing/Drill Pipe					
		lb/gal	cP		T/D	Depth, ft	Size, in	Weight, lb/ft	Grade	Thread
Service Line	Job Type			Perforations/Open Hole						
Cementing	Surface			Top, ft	Bottom, ft	shot/ft	No. of Shots	Total Interval		
500 psi	psi			Single Cement head	ft	ft			ft	
Service Instructions				Treat Down	Displacement		Packer Type	Packer Depth		
130sks 35bbl CMT @ 14# 1.53 Yield 7.91gal/sk water				Casing	19.0 bbl			ft		
				Tubing Vol.	Casing Vol.	Annular Vol.	Openhole Vol.			
				bbl	21.5 bbl	24.0 bbl	bbl			
Casing/Tubing Secured		1 Hole Vol. Circulated prior to Cement			Casing Tools			Squeeze Job		
<input checked="" type="checkbox"/>		<input checked="" type="checkbox"/>								
Lift Pressure		Shoe Type			Shoe Depth		Squeeze Type			
139 psi		Guide			338.0 ft					
Pipe Rotated		Pipe Reciprocated			Stage Tool Type			Tool Depth		
<input type="checkbox"/>		<input type="checkbox"/>						ft		
No. Centralizers		Top Plugs	Bottom Plugs		Stage Tool Depth			Tail Pipe Size		
		1			ft			in		
Cement Head Type				Collar Type			Tail Pipe Depth			
Single				Float			ft			
Job Scheduled For		Arrived on Location		Leave Location	Collar Depth			Sqz. Total Vol.		
Dec/17/2013 16:00		Dec/17/2013 16:00		Dec/17/2013 19:00	296.0 ft			bbl		
Date	Time 24-hr clock	Treating Pressure PSI	Flow Rate B/M	Density LB/G	Volume BBL	Message				
12/17/2013	17:17:29	-3	0.0	8.44	0.0	Started Acquisition				
12/17/2013	17:17:32	-3	0.0	8.44	0.0	Start Job				
12/17/2013	17:17:35	-3	0.0	8.44	0.0	Start Pumping Wash				
12/17/2013	17:20:00	37	4.0	8.41	5.9					
12/17/2013	17:22:01	1201	0.0	8.41	7.8	Pressure Test Lines 1000psi				
12/17/2013	17:22:31	1105	0.0	8.41	7.8					
12/17/2013	17:25:02	45	3.4	8.42	9.8					
12/17/2013	17:27:33	47	1.7	8.41	13.8					
12/17/2013	17:30:04	56	2.4	8.41	19.4					
12/17/2013	17:32:35	-4	0.0	8.41	20.1					
12/17/2013	17:35:06	0	0.0	8.41	20.3					
12/17/2013	17:37:37	6	0.0	8.41	20.6					
12/17/2013	17:37:48	5	0.0	8.41	20.6	Start mixing CMT				
12/17/2013	17:37:56	5	0.0	8.41	20.6	Reset Total, Vol = 20.56 bbl				
12/17/2013	17:40:08	7	0.0	8.41	20.6					
12/17/2013	17:41:29	37	2.4	14.01	20.8	Pumping CMT				
12/17/2013	17:42:39	54	2.8	14.04	24.1					
12/17/2013	17:45:10	57	3.7	14.06	32.6					
12/17/2013	17:47:41	50	3.7	14.09	41.8					
12/17/2013	17:50:12	70	4.3	14.07	52.3					
12/17/2013	17:50:45	-13	1.4	14.17	54.6	Reset Total, Vol = 34.05 bbl				

Well		Field		Job Start		Customer		Job Number	
Big Sky 13-11		DJ		Dec/17/2013		Nighthawk		CMI1-00397	
Date	Time 24-hr clock	Treating Pressure PSI	Flow Rate B/M	Density LB/G	Volume BBL	Message			
12/17/2013	17:51:00	-12	0.0	14.20	54.7	Drop Top Plug			
12/17/2013	17:51:01	-11	0.0	14.20	54.7	Start Displacement			
12/17/2013	17:52:43	-9	0.0	14.16	54.7				
12/17/2013	17:55:14	36	4.1	9.56	58.1				
12/17/2013	17:57:45	48	1.8	8.45	65.5				
12/17/2013	18:00:16	64	1.5	8.44	69.3				
12/17/2013	18:02:47	54	1.5	8.41	73.2				
12/17/2013	18:04:04	430	0.0	8.41	74.4	Bump Plug/Open St.Collar			
12/17/2013	18:04:14	430	0.0	8.41	74.4	Hold Pressure			
12/17/2013	18:05:13	24	0.0	8.41	74.4	Bleed pressure			
12/17/2013	18:05:18	33	0.0	8.41	74.4				
12/17/2013	18:07:19	56	0.0	8.41	74.4	Float not holding			
12/17/2013	18:07:49	80	1.4	8.41	74.9				
12/17/2013	18:10:20	94	0.9	8.42	75.6				
12/17/2013	18:12:51	158	1.4	8.42	76.4				
12/17/2013	18:14:17	1	0.0	8.42	76.7	Float not holding			
12/17/2013	18:14:33	0	0.0	8.42	76.7	Shut in the CMT head.			

Post Job Summary

Average Pump Rates, bbl/min				Volume of Fluid Injected, bbl			
Slurry	N2	Mud	Maximum Rate	Total Slurry	Mud	Spacer	N2
2.5			4.5	35.0	0.0	0.0	
Treating Pressure Summary, psi				Breakdown Fluid			
Maximum	Final	Average	Bump Plug to	Breakdown	Type	Volume	Density
429	400	107	600			bbl	lb/gal
Avg. N2 Percent	Designed Slurry Volume		Displacement	Mix Water Temp	Cement Circulated to Surface?	Volume	
%	35.4 bbl		19.0 bbl	48 degF	<input checked="" type="checkbox"/>	5.0 bbl	
					Washed Thru Perfs	To	
					<input type="checkbox"/>	ft	
Customer or Authorized Representative			Schlumberger Supervisor			Circulation Lost	Job Completed
Lynn Gibbs			Chris Valerio			<input type="checkbox"/>	<input checked="" type="checkbox"/>
						-	-