

**ANADARKO PETROLEUM CORP - EBUS  
DO NOT MAIL - PO BOX 4995  
THE WOODLANDS, Texas**

Xcel 32C-22HZ

**Majors 42**

## **Post Job Summary** **Cement Surface Casing**

Date Prepared: 11/29/2013  
Version: 1

Service Supervisor: DEAN, MARK

Submitted by: TRIER, DEREK

**HALLIBURTON**

# HALLIBURTON

## Wellbore Geometry

---

Job Tubulars					MD		Shoe Joint Length ft
Type	Description	Size in	ID in	Wt lbm/ft	Top ft	Bottom ft	
Casing	9 5/8" Surface Casing	9.63	8.921	36.00	0.00	1,032.00	43.00
Open Hole Section	13 1/2" Open Hole Section		13.500		0.00	1,042.00	0.00

# HALLIBURTON

## ***Pumping Schedule***

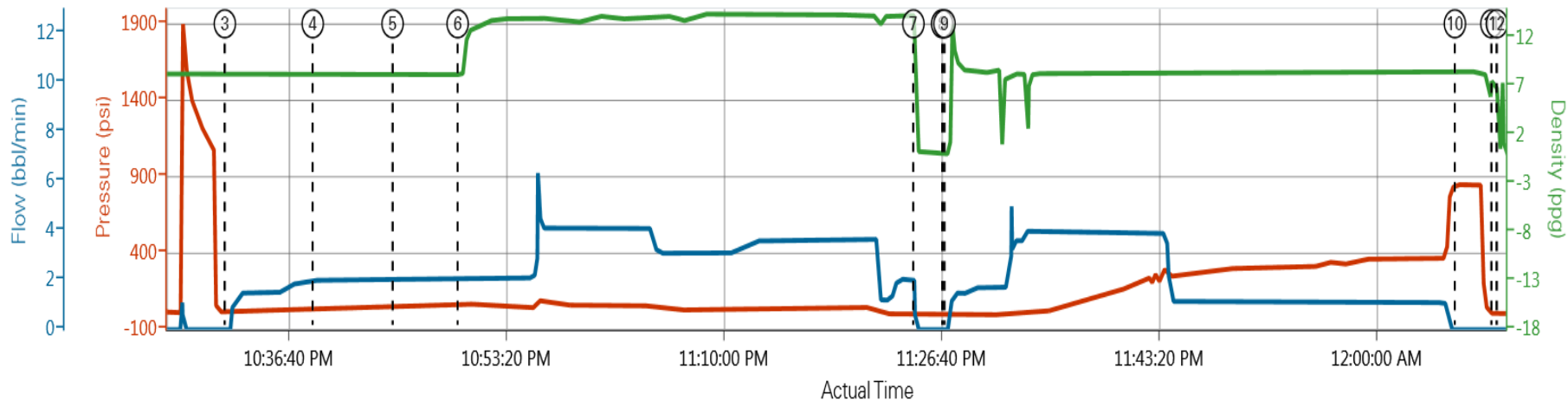
---

Stage /Plug #	Fluid #	Fluid Type	Fluid Name	Surface Density lbm/gal	Avg Rate bbl/min	Surface Volume	Downhole Volume
1	1	Spacer	Fresh Water Spacer	8.33	1.5	10.0 bbl	10.0 bbl
1	2	Spacer	Mud Flush	8.40	2.0	12.0 bbl	12.0 bbl
1	1	Spacer	Fresh Water Spacer	8.33	2.0	10.0 bbl	10.0 bbl
1	3	Cement Slurry	SwiftCem B2	14.20	4.0	390.0 sk	390.0 sk

# HALLIBURTON

## Data Acquisition

### ANADARKO SURFACE 11-18-13



PS Pump Press (psi) DH Density (ppg) Comb Pump Rate (bbl/min)

- |                        |                            |                             |                         |
|------------------------|----------------------------|-----------------------------|-------------------------|
| ① Start Job 8;7.65;0   | ④ Pump Mud Flush 43;8.32;2 | ⑦ Shutdown 5;0.34;0         | ⑩ Bump Plug 850;8.54;0  |
| ② Test Lines 17;8.31;0 | ⑤ Pump Water 51;8.27;2     | ⑧ Drop Top Plug 0;0.08;0    | ⑪ Check Floats 3;7.15;0 |
| ③ Pump Water 11;8.33;0 | ⑥ Pump Cement 62;8.26;2.1  | ⑨ Pump Displacement 0;0.1;0 | ⑫ End Job 3;0.61;0      |

▼ HALLIBURTON | iCem® Service

Created: 2013-11-18 19:56:55, Version: 2.0.606

Edit

Customer: ANADARKO PETROLEUM CORP -  
EBUS

Job Date: 11/18/2013 9:56:54 PM

Well: 32c-22h2

Representative: BOB PORTER

Sales Order #: 900908366

RedTiger #: 11341988

# HALLIBURTON

## Service Supervisor Reports

### Job Log

Date/Time	Chart #	Activity Code	Pump Rate	Cum Vol	Pump	Pressure (psig)	Comments
11/18/2013 16:00		Call Out					Crew Called Out @ 16:00
11/18/2013 18:00		Pre-Convoy Safety Meeting					Discussed Planned Route, Equipment Checks & Safe Driving
11/18/2013 18:15		Depart from Service Center or Other Site					Departed Yard in Convoy
11/18/2013 20:00		Arrive at Location from Service Center					Pulled Equipment Off the Road to Inspect Site.
11/18/2013 20:15		Assessment Of Location Safety Meeting					Discussed Layout & Spotting Equipment
11/18/2013 20:30		Pre-Rig Up Safety Meeting					Discussed PPE, Red Zones, & Other Hazards
11/18/2013 20:45		Rig-Up Equipment					Rigged up Safely to Customer & HES Standards
11/18/2013 22:00		Pre-Job Safety Meeting					Discussed Job Procedure & Safety Concerns with Customer & Crew
11/18/2013 22:20		Test Lines					Tested Lines to 1000 psi (Pressure Held) Reset KO's to 400psi
11/18/2013 22:29		Pump Water	1.5	10		30.0	Pumped 10 BBL Water Ahead
11/18/2013 22:36		Pump Spacer	2	12		45.0	Pumped 12 BBL Mud Flush III
11/18/2013 22:42		Pump Water	2	10		50.0	Pumped 10 BBL Fresh Water Behind
11/18/2013 22:47		Pump Cement	4	107		60.0	Pumped 107 BBL CMT @ D: 14.2# Y: 1.54 W: 7.66 (390 sks)
11/18/2013 23:16		Returns To Surface	4	93		50.0	Returns to surface @ 93 BBL of CMT gone.
11/18/2013 23:22		Shutdown					Shutdown to Drop Plug
11/18/2013 23:23		Drop Plug					Tattle Tell Opened. Plug Left Head
11/18/2013 23:25		Clean Lines					Cleaned Lines on top of plug with first 10 BBL Displacement
11/18/2013 23:25		Pump Displacement	4	76		20.0	Pumped 76 BBL of Fresh Water Displacement
11/18/2013 23:36		Displ Reached Cmnt	4	30		100.0	Caught plug at 30 BBL gone.
11/18/2013 23:42		Slow Rate	1	50		250.0	Slowed Rate to 1 BPM per customer request. (suck truck not working)
11/18/2013 23:45		Cement Returns to Surface	1	57		290.0	19 BBL Total Cement Returned to Surface
11/19/2013 00:03		Bump Plug				400.0	Bumped Plug @ 400psi. 500 psi over to 900psi
11/19/2013 00:05		Check Floats					.5 BBL back to Truck
11/19/2013 00:15		Pre-Rig Down Safety Meeting					Discussed Trapped Pressure, Overhead Loads, & Other Hazards.
11/19/2013 00:25		Rig-Down Equipment					Rigged Down Safely to Customer & HES Standards.
11/19/2013 01:45		Pre-Convoy Safety Meeting					Discussed Safe Driving.
11/19/2013 02:00		Depart Location for Service Center or Other Site					Thank you for Choosing Halliburton!

## The Road to Excellence Starts with Safety

Sold To #: 300466	Ship To #: 3202444	Quote #:	Sales Order #: 900908366
Customer: ANADARKO PETROLEUM CORP - EBUS		Customer Rep: Porter, Bob	
Well Name: Xcel		Well #: 32C-22HZ	API/UWI #: 05-123-38391
Field: Wattenberg	City (SAP): DACONO	County/Parish: Weld	State: Colorado
Contractor: Majors		Rig/Platform Name/Num: Majors 42	
Job Purpose: Cement Surface Casing			
Well Type: Development Well		Job Type: Cement Surface Casing	
Sales Person: PLIENESS, RYAN		Srvc Supervisor: DEAN, MARK	MBU ID Emp #: 454214

## Job Personnel

HES Emp Name	Exp Hrs	Emp #	HES Emp Name	Exp Hrs	Emp #	HES Emp Name	Exp Hrs	Emp #
BARNES, BRIAN L	0.0	485204	DEAN, MARK Christophe	0.0	454214	EAVES, WESTON	0.0	539193

## Job

## Job Times

Formation Name						Date	Time	Time Zone	
Formation Depth (MD)	Top			Bottom		Called Out	18 - Nov - 2013	15:30	MST
Form Type			BHST			On Location	18 - Nov - 2013	18:30	MST
Job depth MD	1031. ft		Job Depth TVD			Job Started	18 - Nov - 2013	10:15	MST
Water Depth			Wk Ht Above Floor			Job Completed	19 - Nov - 2013	00:05	MST
Perforation Depth (MD)	From			To		Departed Loc	19 - Nov - 2013	01:30	MST

## Well Data

Description	New / Used	Max pressure psig	Size in	ID in	Weight lbm/ft	Thread	Grade	Top MD ft	Bottom MD ft	Top TVD ft	Bottom TVD ft
13 1/2" Open Hole Section				13.5				.	1042.		
9 5/8" Surface Casing	Unknown		9.625	8.921	36.		J-55	.	1032.		

## Fluid Data

## Stage/Plug #: 1

Fluid #	Stage Type	Fluid Name	Qty	Qty uom	Mixing Density lbm/gal	Yield ft <sup>3</sup> /sk	Mix Fluid Gal/sk	Rate bbl/min	Total Mix Fluid Gal/sk
1	Fresh Water Spacer		10.0	bbl	8.33			1.5	
2	Mud Flush		12.0	bbl	8.4			2.0	
	3.5 lbm/bbl	MUD FLUSH III, 40 LB SACK (101633304)							
	42 gal/bbl	MUD FLUSH III - SBM (528788)							
1	Fresh Water Spacer		10.0	bbl	8.33			2.0	
3	SwiftCem B2	SWIFTCem (TM) SYSTEM (452990)		sacks	14.2	1.53	7.63	4.0	7.63
	7.63 Gal	FRESH WATER							

## Calculated Values

## Pressures

## Volumes

Displacement	76	Shut In: Instant		Lost Returns	0	Cement Slurry		Pad	
Top Of Cement		5 Min		Cement Returns	19	Actual Displacement	76	Treatment	
Frac Gradient		15 Min		Spacers	32	Load and Breakdown		Total Job	

<b>Rates</b>																															
Circulating				Mixing				Displacement				Avg. Job																			
Cement Left In Pipe				Amount		43 ft		Reason		Shoe Joint																					
Frac Ring # 1 @				ID				Frac ring # 2 @				ID				Frac Ring # 3 @				ID				Frac Ring # 4 @				ID			
The Information Stated Herein Is Correct										Customer Representative Signature																					

