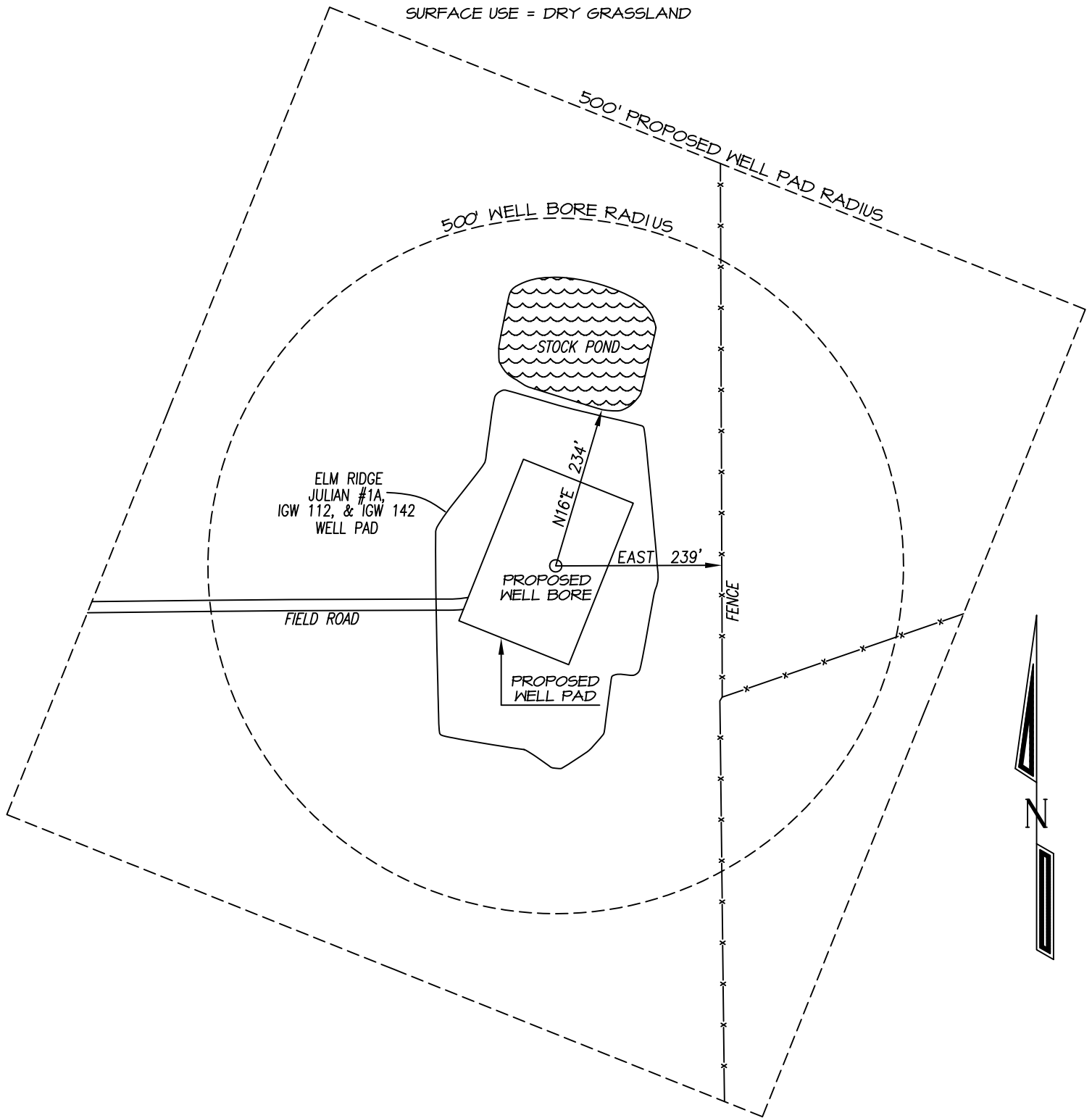


ELM RIDGE EXPLORATION COMPANY, LLC: IGW 143  
1462' FSL, 1085' FWL, SECTION 18, T-33-N, R-8-W, N.M.P.M.,  
LA PLATA COUNTY, CO. GROUND LEVEL ELEVATION: 6725'

500' RADUIS VISIBLE IMPROVEMENT DETAIL

SURFACE USE = DRY GRASSLAND



GRAPHIC SCALE 1"=200'

