

Field Ticket

Field Ticket Number: 901152677		Field Ticket Date: Thursday, February 27, 2014	
Bill To: NOBLE ENERGY INC E-BUSINESS DONOTMAIL-1001 NOBLE ENERGY WAY HOUSTON, TX 77070		Job Name: VETTING Order Type: Streamline Order (ZOH) Well Name: Vetting PM F 26-2 Company Code: 1100 Customer PO No.: NA Shipping Point: Fort Lupton, CO, USA Sales Office: Rocky Mountains BD Well Type: Oil Well Category: Workover	
Ship To: VETTING PM F #26-2, WELD VETTING PM F #26-2 3359001 S26 T5N R65W KERSEY, TX 80644			

Material	Description	QTY	UOM	Base Amt	Unit Amt	Gross Amount	Discount	Net Amount
114	R/A DENSOMETER W/CHART RECORDER, /JOB, Z	1	JOB	0.00				
	NUMBER OF UNITS	1						
139	ADC (AUTO DENSITY CTRL) SYS, /JOB, ZI	1	JOB	0.00				
	NUMBER OF UNITS	1						
132	PORT. DAS W/CEMWIN, ACQUIRE W/HES, ZI	1	JOB	0.00				
	NUMBER OF DAYS	1						
452986	HALCEM (TM) SYSTEM	200	SK					
100008028	SUGAR, GRANULATED, IMPERIAL	50	LB	0.00				
452963	FRACCEM (TM) SYSTEM	175	SK					

Halliburton Rep: MARK DEAN

Customer Agent: Pete Burns

Halliburton Approval

Totals

THIS OUTPUT DOES NOT INCLUDE TAXES. APPLICABLE SALES TAX WILL BE BILLED ON THE FINAL INVOICE.
 CUSTOMER HEREBY ACKNOWLEDGES RECEIPT OF THE MATERIALS AND SERVICES DESCRIBED

X

FIELD TICKET

Customer Signature

 Was our HSE performance satisfactory? Y or N
 (Health, Safety, Environment)

Were you satisfied with our Equipment? Y or N

Comments

The Road to Excellence Starts with Safety

Sold To #: 345242	Ship To #: 3359001	Quote #:	Sales Order #: 901152677
Customer: NOBLE ENERGY INC E-BUSINESS		Customer Rep: Burns, Pete	
Well Name: Vetting PM F	Well #: 26-2	API/UWI #: 05-123-14060	
Field:	City (SAP): KERSEY	County/Parish:	State: Texas
Lat: N 40.376 deg. OR N 40 deg. 22 min. 33.978 secs.		Long: W 104.628 deg. OR W -105 deg. 22 min. 17.796 secs.	
Contractor: Noble		Rig/Platform Name/Num: Workover	
Job Purpose: Recement Service			
Well Type: Development Well		Job Type: Recement Service	
Sales Person: FLING, MATTHEW		Srv Supervisor: DEAN, MARK	MBU ID Emp #: 454214

Job Personnel

HES Emp Name	Exp Hrs	Emp #	HES Emp Name	Exp Hrs	Emp #	HES Emp Name	Exp Hrs	Emp #
DEAN, MARK Christophe	6	454214	Mills, Chuck	6	777777	TOWNSON, JUSTIN Travis	6	555407

Equipment

HES Unit #	Distance-1 way	HES Unit #	Distance-1 way	HES Unit #	Distance-1 way	HES Unit #	Distance-1 way
11341988	30	10867419					

Job Hours

Date	On Location Hours	Operating Hours	Date	On Location Hours	Operating Hours	Date	On Location Hours	Operating Hours
02-27-14	6	4						

TOTAL Total is the sum of each column separately

Job

Formation Name	Top	Bottom	Called Out	Date	Time	Time Zone
Formation Depth (MD)			On Location	27 - Feb - 2014	06:00	MST
Form Type	BHST		Job Started	27 - Feb - 2014	09:30	MST
Job depth MD	4634. ft	Job Depth TVD	Job Completed	27 - Feb - 2014	10:30	MST
Water Depth		Wk Ht Above Floor	Departed Loc	27 - Feb - 2014	00:00	MST
Perforation Depth (MD)	From	To				

Well Data

Description	New / Used	Max pressure psig	Size in	ID in	Weight lbm/ft	Thread	Grade	Top MD ft	Bottom MD ft	Top TVD ft	Bottom TVD ft
11" Open Hole				13.				307.	4600.		
Surface Casing	Used		8.625	8.097	24.		J-55	.	307.	.	.
1 1/4" tubing	Used		1.25	.671	3.02		P-105	.	4600.	.	.

Tools and Accessories

Type	Size	Qty	Make	Depth	Type	Size	Qty	Make	Depth	Type	Size	Qty	Make
Guide Shoe					Packer					Top Plug			
Float Shoe					Bridge Plug					Bottom Plug			
Float Collar					Retainer					SSR plug set			
Insert Float										Plug Container			
Stage Tool										Centralizers			

Miscellaneous Materials

Gelling Agt		Conc		Surfactant		Conc		Acid Type		Qty		Conc	%
Treatment Fld		Conc		Inhibitor		Conc		Sand Type		Size		Qty	

Fluid Data

Stage/Plug #: 1												
Fluid #	Stage Type	Fluid Name	Qty	Qty uom	Mixing Density lbm/gal	Yield ft ³ /sk	Mix Fluid Gal/sk	Rate bbl/min	Total Mix Fluid Gal/sk			

Stage/Plug #: 1

Stage/Plug #: 1										
Fluid #	Stage Type	Fluid Name	Qty	Qty uom	Mixing Density lbm/gal	Yield ft ³ /sk	Mix Fluid Gal/sk	Rate bbl/min	Total Mix Fluid Gal/sk	
1	13.5# FracCem	FRACCEM (TM) SYSTEM (452963)	175	sacks	13.5	1.43	6.82		6.82	
	6.82 Gal	FRESH WATER								
2	15.8# Cement	HALCEM (TM) SYSTEM (452986)	200	sacks	15.8	1.15	5.0		5.0	
	5 Gal	FRESH WATER								
Calculated Values		Pressures		Volumes						
Displacement		Shut In: Instant		Lost Returns		Cement Slurry	85	Pad		
Top Of Cement		5 Min		Cement Returns	6	Actual Displacement	4.5	Treatment		
Frac Gradient		15 Min		Spacers		Load and Breakdown		Total Job	90	
Rates										
Circulating		Mixing	2	Displacement	2	Avg. Job	2			
Cement Left In Pipe	Amount	0 ft	Reason	Shoe Joint						
Frac Ring # 1 @	ID	Frac ring # 2 @	ID	Frac Ring # 3 @	ID	Frac Ring # 4 @	ID			
The Information Stated Herein Is Correct				Customer Representative Signature						

The Road to Excellence Starts with Safety

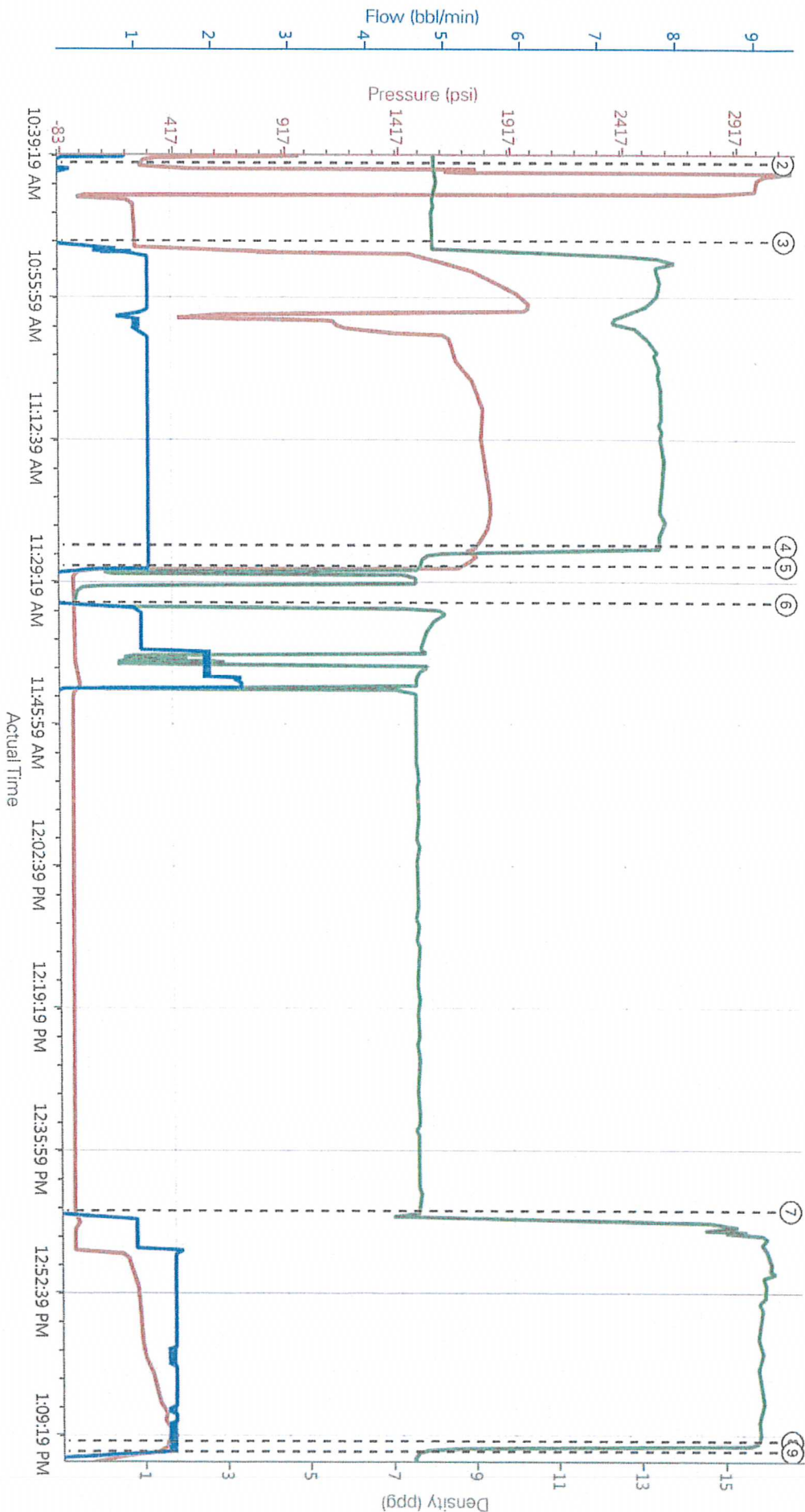
Sold To #: 345242	Ship To #: 3359001	Quote #:	Sales Order #: 901152677
Customer: NOBLE ENERGY INC E-BUSINESS	Customer Rep: Burns, Pete		
Well Name: Vetting PM F	Well #: 26-2	API/UWI #: 05-123-14060	
Field:	City (SAP): KERSEY	County/Parish:	State: Texas
Legal Description:			
Lat: N 40.376 deg. OR N 40 deg. 22 min. 33.978 secs.		Long: W 104.628 deg. OR W -105 deg. 22 min. 17.796 secs.	
Contractor: Noble	Rig/Platform Name/Num: Workover		
Job Purpose: Recement Service	Ticket Amount:		
Well Type: Development Well	Job Type: Recement Service		
Sales Person: FLING, MATTHEW	Srvc Supervisor: DEAN, MARK	MBU ID Emp #: 454214	

Activity Description	Date/Time	Cht #	Rate bbl/min	Volume bbl		Pressure psig		Comments
				Stage	Total	Tubing	Casing	
Call Out	02/27/2014 06:00							Crew Called out @ 06:00
Pre-Convoy Safety Meeting	02/27/2014 07:30							Discussed directions, road conditions, and convoy order.
Depart from Service Center or Other Site	02/27/2014 07:45							Departed yard in Convoy.
Arrive at Location from Service Center	02/27/2014 09:30							Pulled equipment off of location to Access spotting.
Assessment Of Location Safety Meeting	02/27/2014 09:35							Discussed layout and spotting.
Pre-Rig Up Safety Meeting	02/27/2014 09:40							Discussed Red zones & other hazards
Rig-Up Equipment	02/27/2014 09:45							Rigged equipment up to rig floor.
Pre-Job Safety Meeting	02/27/2014 10:20							Discussed job procedure with customer and crew.
Circulate Well	02/27/2014 10:30		1	3		850.0		Broke circulation with 3 bbl of fresh water
Test Lines	02/27/2014 10:36							Tested lines to 3000 psi
Pump Cement	02/27/2014 10:45		1.2	44.5		1500.0		Pumped 44.5 bbl of CMT @ D: 13.5 Y: 1.43 W: 6.82 (175 sks)
Pump Displacement	02/27/2014 11:20		1.2	3		1770.0		Pumped 3 bbl of fresh water displacement
Shutdown	02/27/2014 11:23							Shutdown and pulled pipe to 377'
Pump Cement	02/27/2014 12:38		1.5	40.9		200.0		Pumped 40.9 bbl of CMT @ D: 15.8 Y: 1.15 W: 5.0 (200 sks)
Cement Returns to Surface	02/27/2014 13:03		1.5	35		400.0		6 bbl of CMT to Surface

Cementing Job Log

Activity Description	Date/Time	Cht #	Rate bbl/ min	Volume bbl		Pressure psig		Comments
				Stage	Total	Tubing	Casing	
Pump Displacement	02/27/2014 13:05		1.5	1.5		380.0		Pumped 1.5 bbl fresh water displacement.
Shutdown	02/27/2014 13:07							Shutdown. Job Complete
Post-Job Safety Meeting (Pre Rig-Down)	02/27/2014 13:10							Discussed trapped pressure, overhead loads and other hazards.
Rig-Down Equipment	02/27/2014 13:15							Rigged down safely to HES & Customer expectations.
Pre-Convoy Safety Meeting	02/27/2014 14:15							Discussed safe driving.
Depart Location for Service Center or Other Site	02/27/2014 14:30							Thankyou for choosing Halliburton!

Noble Annular Fill 02-27-14



- ① Start Job 4:16:33.0
- ② Test Lines 278:8.22.0
- ③ Pump Cement 258:8.19.0
- ④ Pump Displacement 1768:13.59:1.2
- ⑤ Shutdown 53:7.77.0
- ⑥ Clean Lines-19:0.42:1
- ⑦ Pump Cement-29:7.7.0
- ⑧ Pump Displacement 369:15.79:1.5
- ⑨ Shutdown 198:7.56:0
- ⑩ End Job-31:7.46:0

HALIBURTON | iCem® Service

Customer: NOBLE ENERGY INC E-BUSINESS
Representative: Pete Burns

Job Date: 2/27/2014 10:17:15 AM
Sales Order #: 901152677

Well: 26-2
Red Tiger #: 11341988

Created: 2014-02-27 10:14:24, Version: 3.0.121

Edit