
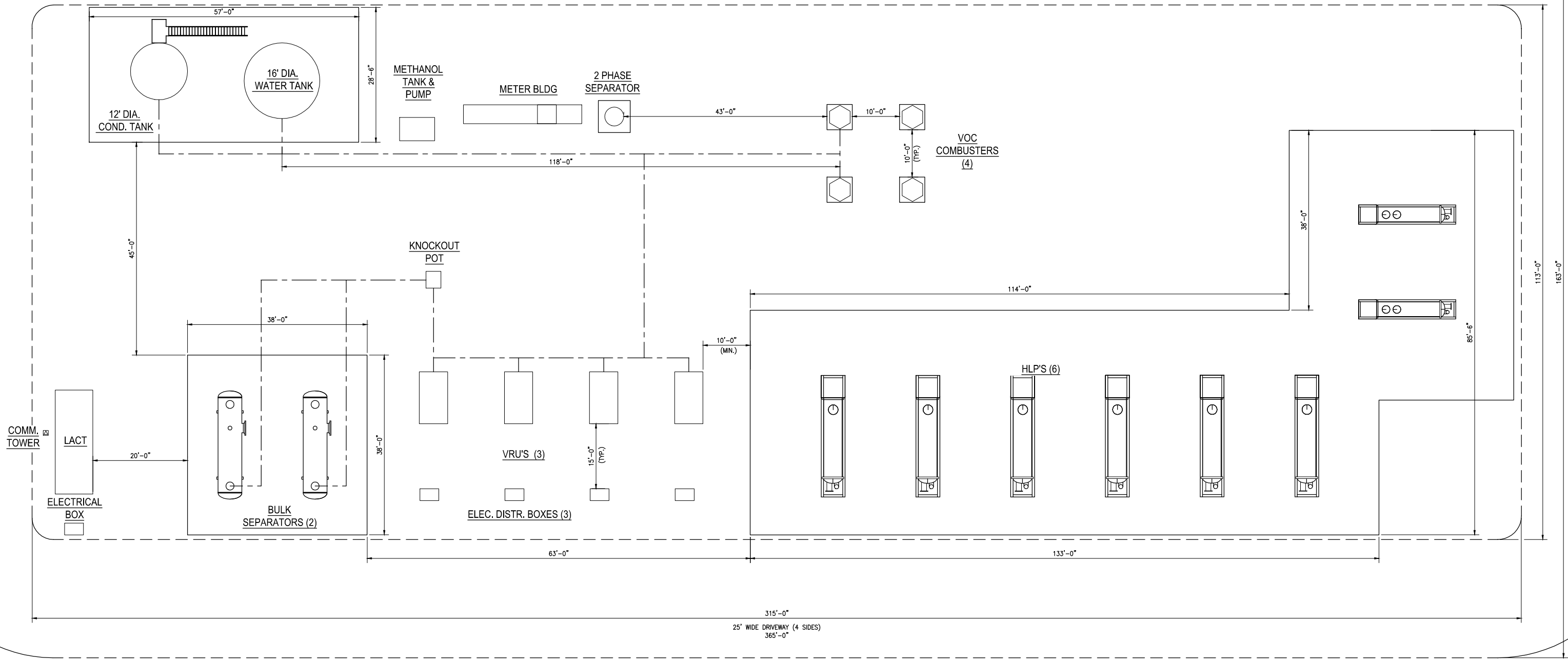
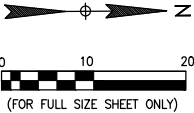


THIS DRAWING AND THE DESIGN IT COVERS ARE CONFIDENTIAL AND REMAIN THE PROPERTY OF ANADARKO PETROLEUM CORPORATION AND SHALL NOT BE DISCLOSED TO OTHERS OR REPRODUCED IN ANY MANNER OR USED FOR ANY PURPOSE WHATSOEVER EXCEPT BY WRITTEN PERMISSION BY THE OWNER.



NOTES: 1. EQUIPMENT PLACEMENT IS APPROXIMATE AND SUBJECT TO MINOR MODIFICATION DUE TO SITE SPECIFIC CIRCUMSTANCES.		REFERENCE DRAWINGS		REVISIONS			
RCA31-GA-101		REYNOLDS CATTLE 31C - PLOT PLAN WITH EQUIPMENT LOCATIONS		ISSUED FOR PERMIT		MAK	02/27/14
DWG. NO.		TITLE		NO.		BY	DATE

REFERENCE DRAWINGS		REVISIONS					
RCAS1-GA-101	REYNOLDS CATTLE 31C - PLOT PLAN WITH EQUIPMENT LOCATIONS		ISSUED FOR PERMIT	MAX	02/27/14	MFC	02/27/14
DWG. NO.	TITLE	NO.	DESCRIPTION	BY	DATE	CHK.	DATE
						APPR.	DATE



PLOT PLAN

SCALE AS NOTED

LEGEND

- DRIVEWAY
- ABOVE GRADE PIPE

NOTES:  
1. EQUIPMENT PLACEMENT IS APPROXIMATE AND SUBJECT TO MINOR MODIFICATION DUE TO SITE SPECIFIC CIRCUMSTANCES.

REFERENCE DRAWINGS		REVISIONS					
RCA31-GA-100	REYNOLDS CATTLE 31C - AREA PLAN	ISSUED FOR PERMIT	MAK	02/27/14	MPC	02/27/14	
DWG. NO.	TITLE	NO.	DESCRIPTION	BY	DATE	CHK.	DATE



PIPELINE STRATEGIES & INTEGRITY

GREATER WATTENBERG AREA REYNOLDS CATTLE PLOT PLAN WITH EQUIPMENT LOCATIONS		
DRAWN BY: MAK	CREATION DATE: 02/03/14	AFE No.:
APPROVED:	APPR. DATE:	DWG. No.:
SCALE: 1"= 10' (FULL SIZE)		SHEET No. 1 OF 1
RCA31-GA-101		

THIS DRAWING AND THE DESIGN IT COVERS ARE CONFIDENTIAL AND REMAIN THE PROPERTY OF ANADARKO PETROLEUM CORPORATION AND SHALL NOT BE DISCLOSED TO OTHERS OR REPRODUCED IN ANY MANNER OR USED FOR ANY PURPOSE WHATSOEVER EXCEPT BY THE OWNER.