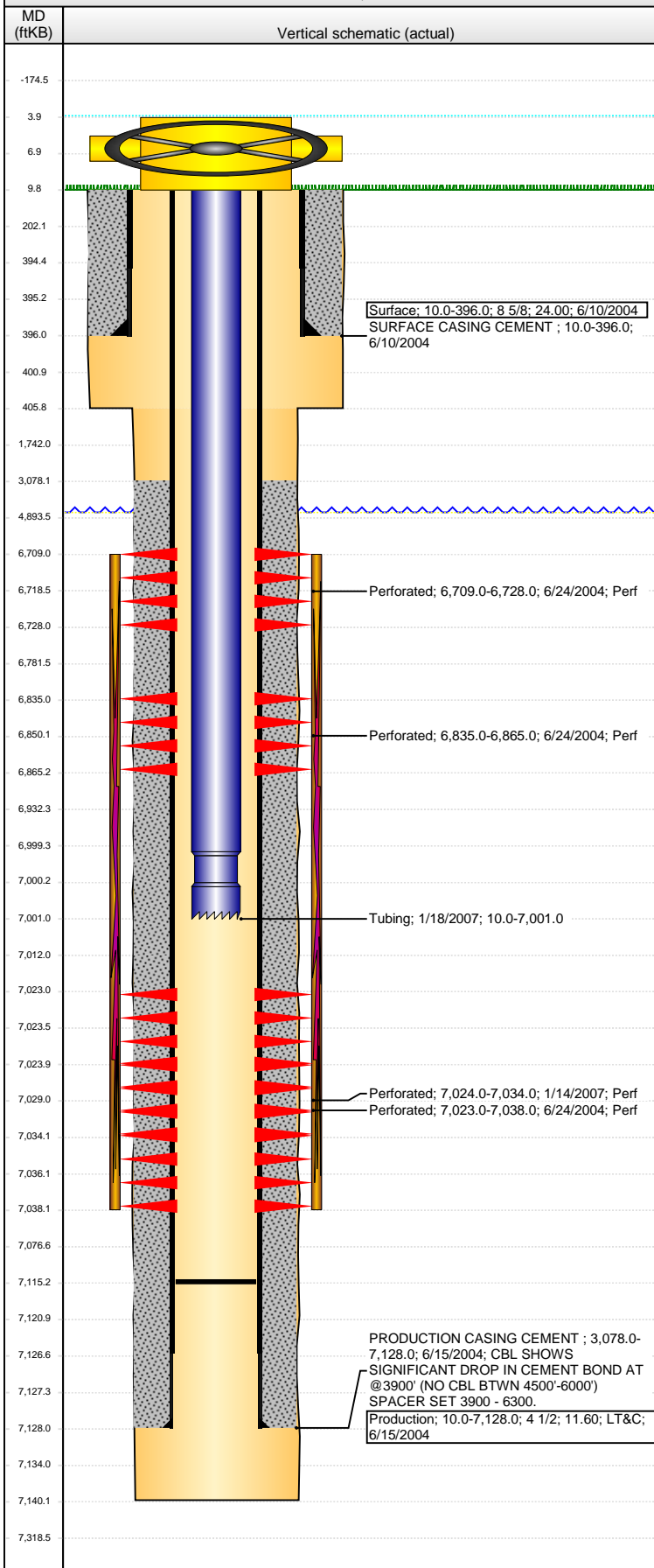


# Wellbore Schematic Input Report

**Well Name: DINNER 13-32**

VERTICAL - ORIGINAL HOLE, 3/13/2014 9:07:07 AM



## Well Header

API	Business Unit	District	Well Config
05-123-21942	WATTENBERG	15	VERTICAL
Original KB Elevation (ft)	KB - GL / MSL (ftKB)	Spud Date	P & A Date
4,710.00	10.00	6/9/2004	

Comment  
FORM 5 SUBMITTED FOR DRILL AND COMPLETE LISTS CEMENT BEING FROM 3080'-6190' AND THEN 6190'-7128'. CBL DOES NOT CONFIRM CEMENT COVERAGE ALL THE WAY, BUT CEMENTING REPORT SHOWS CEMENT ALL THE WAY FROM 3078'-TD.

Directions To Well

## Congressional Location

Quarter 1	Quarter 2	Quarter 3	Quarter 4	Section	Township	Twnshp N...	Range	Rng E/W Dir
		NW	SW	13	6	N	65	W

## Bottom Hole Location

North-South Distance (ft)	From N or S Line	East-West Distance (ft)	From E or W Line

## Plug Back Total Depths

Date	Depth (ftKB)	Method	Com
6/15/2004	7,117.0	TAG	SHOE WITH BAFFLE
6/23/2004	7,083.0	CASED HOLE LOG	DEPTH LOGGER FROM CBL
1/18/2007	7,115.0	TAG	CLEAN OUT & LAND TBG

## Wellbore Sections

Section Des	Size (in)	Act Top, MD (ftKB)	Act Btm, MD (ftKB)
SURFACE	12 1/4	10.0	406.0
PRODUCTION	7 7/8	406.0	7,140.0

## Zone Statuses

Zone Name	Status Date	Status	Job
CODELL	7/21/2004	PR	DRILLING/COMPLETION - ORIGINAL, 6/9/2004 00:00
CODELL	2/1/2007	PR	RE-FRAC, 1/11/2007 00:00
NIOBRARA	7/21/2004	PR	DRILLING/COMPLETION - ORIGINAL, 6/9/2004 00:00

## Casing Strings

### Surface, 396.0ftKB

Casing Description	Run Date	OD (in)	Wt/Len (l...)	Grade	Top, MD (ft...)	MD (ftKB)
Surface	6/10/2004	8 5/8	24.00		10.0	396.0

### Production, 7,128.0ftKB

Casing Description	Run Date	OD (in)	Wt/Len (l...)	Grade	Top, MD (ft...)	MD (ftKB)
Production	6/15/2004	4 1/2	11.60	LT&C	10.0	7,128.0

## Cement

Description	Top Depth (ftKB)	Bottom Depth (ftKB)
SURFACE CASING CEMENT	10.0	396.0
PRODUCTION CASING CEMENT	3,078.0	7,128.0

## Tubing Components

Item Des	OD (in)	Wt (lb/ft)	Grade	Jts	Len (ft)	Btm (ftKB)	Btm (TVD) (ftKB)
Tubing	2 3/8	0.00	?		6,989.50	6,999.5	
Notched collar	2 3/8				1.50	7,001.0	

## Perforation Data

Zone	Bnch/St g	Entered Shot Total	Top (ftKB)	Btm (ftKB)	Date
NIOBRARA, ORIGINAL HOLE	A	98	6,709.00	6,728.00	6/24/2004
NIOBRARA, ORIGINAL HOLE	B	98	6,835.00	6,865.00	6/24/2004
CODELL, ORIGINAL HOLE		40	7,023.00	7,038.00	6/24/2004
CODELL, ORIGINAL HOLE		40	7,024.00	7,034.00	1/14/2007

## Stimulations & Treatments

Date	Zone	Primary Job Type
6/25/2004	CODELL, ORIGINAL HOLE	DRILLING/COMPLETION - ORIGINAL
Technical Result	Tech Result Details	Tech Result Note

## Comment

### LIMITED ENTRY

Date	Zone	Primary Job Type
1/15/2007	CODELL, ORIGINAL HOLE	RE-FRAC
Technical Result	Tech Result Details	Tech Result Note

Comment

**Well Name: DINNER 13-32**

VERTICAL - ORIGINAL HOLE, 3/13/2014 9:07:10 AM

## Other In Hole

Run Date	Des	OD (in)	Top (ftKB)	Btm (ftKB)

## Logs

Date	Type	Top, MD (ftKB)	Btm, MD (ftKB)
3/23/2004	CBL/CCL/GR	2,300.0	7,081.0
6/15/2004	COMPENSATED DENSITY	3,500.0	7,132.0
6/15/2004	INDUCTION	386.0	7,132.0

