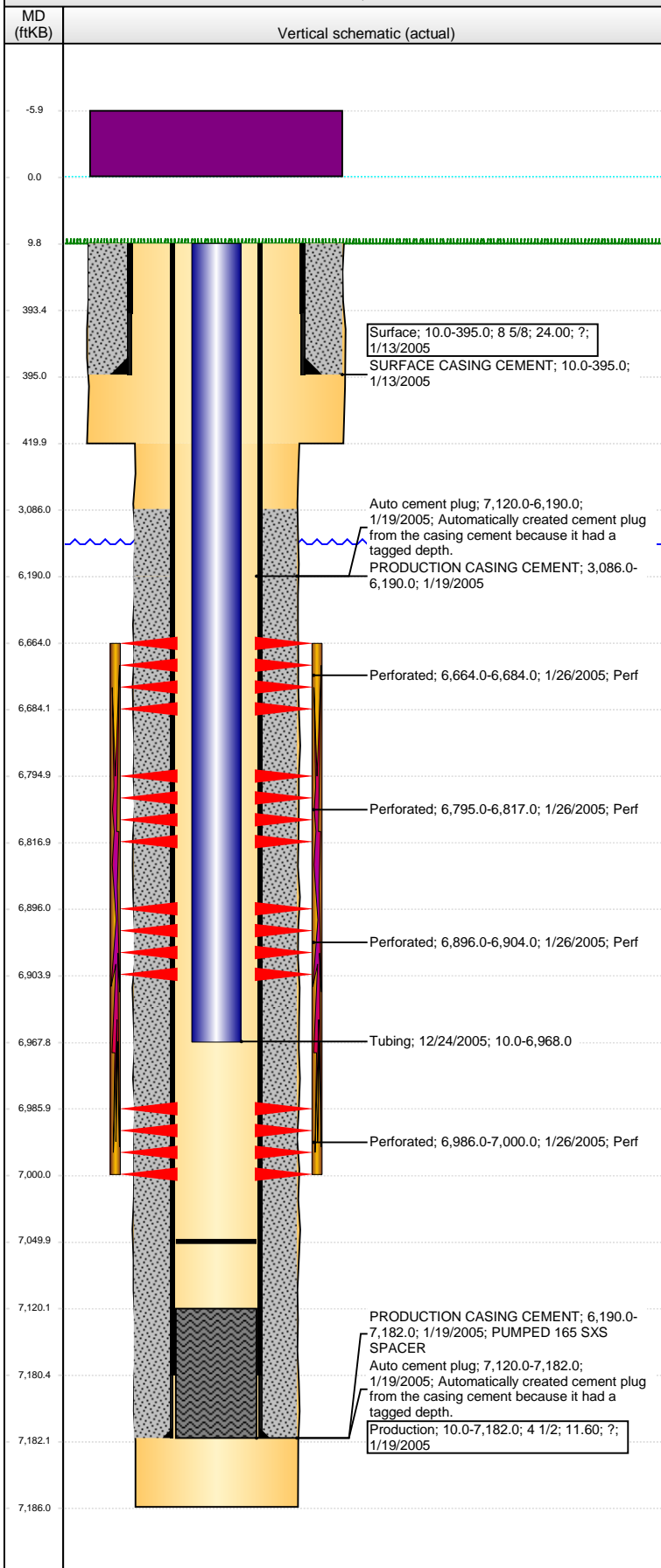


**Well Name: DINNER 13-33**

VERTICAL - ORIGINAL HOLE, 3/13/2014 7:50:59 AM



## Well Header

API	Business Unit	District	Well Config
05-123-22370	WATTENBERG	15	VERTICAL
Original KB Elevation (ft)	KB - GL / MSL (ftKB)	Spud Date	P & A Date
4,711.00	10.00	1/12/2005	

## Comment

DISCREPANCY: DR RPT TD 7186; ST RPT TD 7141

## Directions To Well

## Congressional Location

Quarter 1	Quarter 2	Quarter 3	Quarter 4	Section	Township	Twtnshp N...	Range	Rng E/W Dir
	NE	SW	SW	13	6	N	65	W

## Bottom Hole Location

North-South Distance (ft)	From N or S Line	East-West Distance (ft)	From E or W Line

## Plug Back Total Depths

Date	Depth (ftKB)	Method	Com
1/25/2005	7,120.0	CASED HOLE LOG	DEPTH LOGGER ON CBL
12/24/2005	7,050.0	TAG	CLEAN OUT TO LAND TUBING

## Wellbore Sections

Section Des	Size (in)	Act Top, MD (ftKB)	Act Btm, MD (ftKB)
SURFACE	12 1/4	10.0	420.0
PRODUCTION	7 7/8	420.0	7,186.0

## Zone Statuses

Zone Name	Status Date	Status	Job
CODELL	1/31/2005	PR	DRILLING/COMPLETION - ORIGINAL, 1/12/2005 00:00
NIOBRARA	1/31/2005	PR	DRILLING/COMPLETION - ORIGINAL, 1/12/2005 00:00

## Casing Strings

### Surface, 395.0ftKB

Casing Description	Run Date	OD (in)	Wt/Len (l...)	Grade	Top, MD (ft...)	MD (ftKB)
Surface	1/13/2005	8 5/8	24.00	?	10.0	395.0

### Production, 7,182.0ftKB

Casing Description	Run Date	OD (in)	Wt/Len (l...)	Grade	Top, MD (ft...)	MD (ftKB)
Production	1/19/2005	4 1/2	11.60	?	10.0	7,182.0

## Cement

Description	Top Depth (ftKB)	Bottom Depth (ftKB)
SURFACE CASING CEMENT	10.0	395.0
PRODUCTION CASING CEMENT	3,086.0	6,190.0
PRODUCTION CASING CEMENT	6,190.0	7,182.0

## Tubing Components

Item Des	OD (in)	Wt (lb/ft)	Grade	Jts	Len (ft)	Btm (ftKB)	Btm (TVD) (ftKB)
Tubing	2 3/8	0.00	?	228	6,958.00	6,968.0	

## Perforation Data

Zone	Bnch/St g	Entered Shot Total	Top (ftKB)	Btm (ftKB)	Date
NIOBRARA, ORIGINAL HOLE	A		6,664.00	6,684.00	1/26/2005
NIOBRARA, ORIGINAL HOLE	B		6,795.00	6,817.00	1/26/2005
NIOBRARA, ORIGINAL HOLE	C		6,896.00	6,904.00	1/26/2005
CODELL, ORIGINAL HOLE			6,986.00	7,000.00	1/26/2005

## Stimulations & Treatments

Date	Zone	Primary Job Type
1/28/2005	NIOBRARA-CODELL, ORIGINAL HOLE	DRILLING/COMPLETION - ORIGINAL
Technical Result	Tech Result Details	Tech Result Note
Failure	Screen-Out	

## Comment

LIMITED ENTRY; NIO SCREENED OUT

## Other In Hole

Run Date	Des	OD (in)	Top (ftKB)	Btm (ftKB)

## Logs

Date	Type	Top, MD (ftKB)	Btm, MD (ftKB)
1/19/2005	COMPENSATED DENSITY	3,500.0	7,166.0
1/19/2005	INDUCTION	395.0	7,186.0
1/25/2005	CBL/CCL/GR	2,900.0	7,118.0