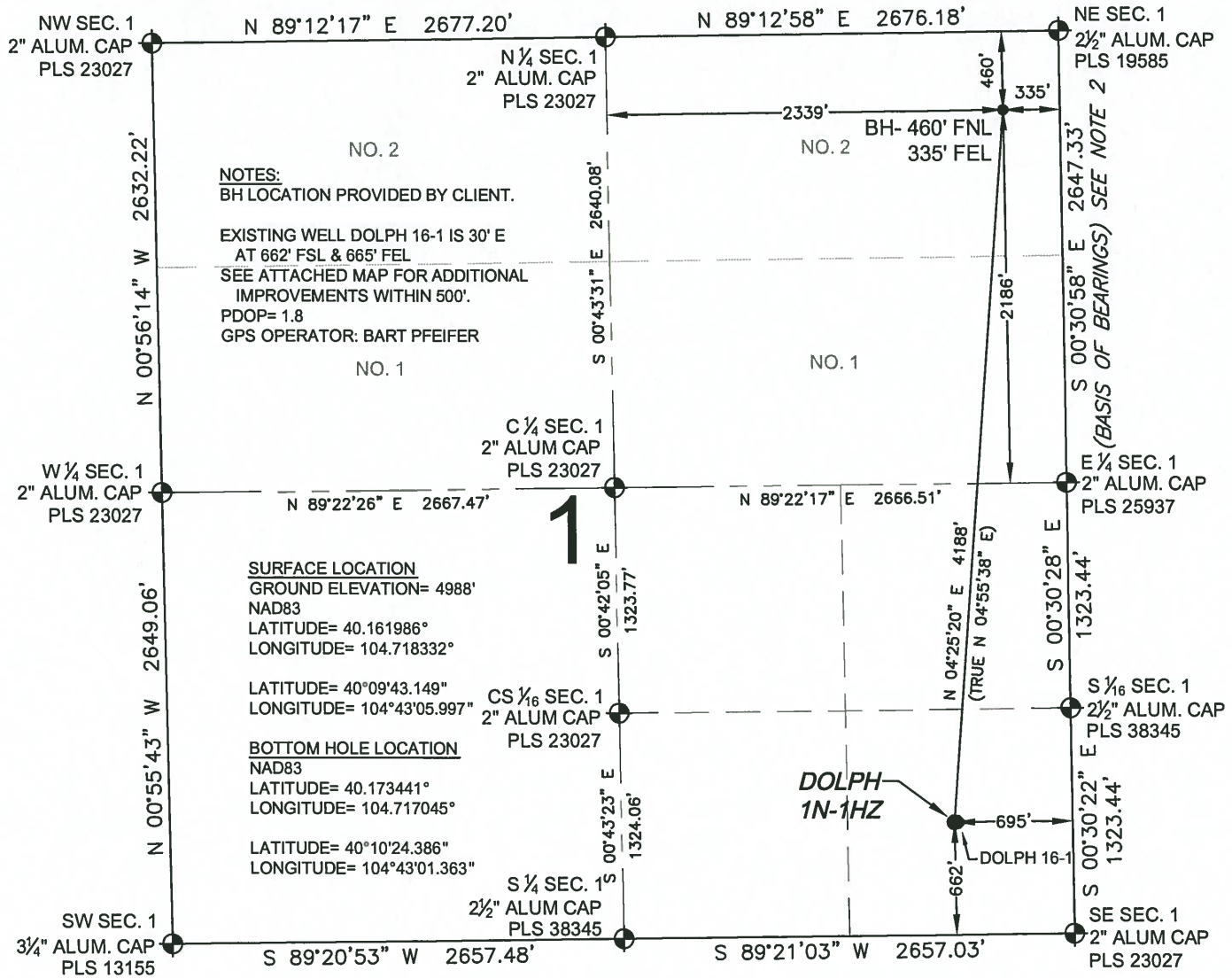


# WELL LOCATION CERTIFICATE: DOLPH 1N-1HZ

## SECTION 1, TOWNSHIP 2 NORTH, RANGE 66 WEST, 6TH P.M.



**NOTES:**  
 BH LOCATION PROVIDED BY CLIENT.  
 EXISTING WELL DOLPH 16-1 IS 30' E  
 AT 662' FSL & 665' FEL  
 SEE ATTACHED MAP FOR ADDITIONAL  
 IMPROVEMENTS WITHIN 500'.  
 PDOP= 1.8  
 GPS OPERATOR: BART PFEIFER

**SURFACE LOCATION**  
 GROUND ELEVATION= 4988'  
 NAD83  
 LATITUDE= 40.161986°  
 LONGITUDE= 104.718332°

LATITUDE= 40°09'43.149"  
 LONGITUDE= 104°43'05.997"

**BOTTOM HOLE LOCATION**  
 NAD83  
 LATITUDE= 40.173441°  
 LONGITUDE= 104.717045°

LATITUDE= 40°10'24.386"  
 LONGITUDE= 104°43'01.363"

**WELL DOLPH 1N-1HZ TO BE LOCATED 662' FSL AND 695' FEL**

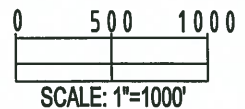
**LEGEND**

- ⊕ = EXISTING MONUMENT
- ⬠ = BOTTOM HOLE
- = PROPOSED WELL
- ◆ = EXISTING WELL
- BH = BOTTOM HOLE

**NOTES:**

1. THIS FIELD SURVEY CONFORMS TO THE MINIMUM STANDARDS SET BY THE C.O.G.C.C., RULE NO. 215
2. BEARINGS AND DISTANCE SHOWN HEREON ARE GRID AND BASED ON THE COLORADO STATE PLANE COORDINATE SYSTEM, NAD 83/2011 BETWEEN MONUMENTS AS LABELED HEREON AND ELEVATIONS SHOWN ARE NAVD 88, AS DERIVED BY GPS OBSERVATIONS.
3. GRID DISTANCES ARE SHOWN, AS MEASURED IN THE FIELD, WITH TIES TO WELLS MEASURED PERPENDICULAR TO SECTION LINES.

I, BRADLEY L. LAMAN, A LICENSED PROFESSIONAL LAND SURVEYOR IN THE STATE OF COLORADO DO HEREBY CERTIFY TO KERR-MCGEE OIL & GAS ONSHORE LP, THAT THE SURVEY AND WELL LOCATION CERTIFICATE SHOWN HEREON WERE DONE BY ME OR UNDER MY DIRECT SUPERVISION AND THAT THE DRAWING SHOWN HEREON ACCURATELY DEPICTS THE PROPOSED LOCATION OF THE WELL. THIS CERTIFICATE DOES NOT REPRESENT A LAND SURVEY PLAT OR IMPROVEMENT SURVEY PLAT AS DEFINED BY C.R.S. 38-51-102 AND CANNOT BE RELIED UPON TO DETERMINE OWNERSHIP.



BRADLEY L. LAMAN, PLS 38345  
 COLORADO LICENSED PROFESSIONAL LAND SURVEYOR  
 FOR AND ON BEHALF OF P.F.S., LLC



PREPARED BY: PFS Petroleum Field Services, LLC 1801 W. 13th Ave. Denver, CO 80204	FIELD DATE: 10-29-13	SURFACE LOCATION: SE 1/4, SE 1/4,
	DRAWING DATE: 12-04-13	SEC. 1, T2N, R66W, 6TH P.M.
BY: KAD	CHECKED: TJN	WELD COUNTY, COLORADO

**NOTICE:** ACCORDING TO COLORADO LAW YOU MUST COMMENCE ANY LEGAL ACTION BASED UPON ANY DEFECT IN THIS SURVEY WITHIN THREE YEARS AFTER YOU FIRST DISCOVER SUCH DEFECT. IN NO EVENT MAY ANY ACTION BASED UPON ANY DEFECT IN THIS SURVEY BE COMMENCED MORE THAN TEN YEARS FROM THIS SAID DATE OF THIS CERTIFICATION SHOWN HEREON.