

# HALLIBURTON

## Field Ticket

<b>Field Ticket Number:</b> 900507196		<b>Field Ticket Date:</b> Tuesday, June 11, 2013	
<b>Bill To:</b> NOBLE ENERGY INC E-BUSINESS DO NOT MAIL-100 GLENBOROUGH DR HOUSTON, TX 77067-3610		<b>Job Name:</b> Cannon Red W <b>Order Type:</b> Streamline Order (ZOH) <b>Well Name:</b> Cannon Red W 15-3 <b>Company Code:</b> 1100 <b>Customer PO No.:</b> NA <b>Shipping Point:</b> Fort Lupton, CO, USA <b>Sales Office:</b> Rocky Mountains BD <b>Well Type:</b> Gas <b>Well Category:</b> Development	
<b>Ship To:</b> NOBLE CANNON RED W 15-3,WELD CANNON RED W 15-3 3003481 S15 T2N R66W FORT LUPTON, CO 80621			

Material	Description	QTY	UOM	Base Amt	Unit Amt	Gross Amount	Discount	Net Amount
1	ZI-MILEAGE FROM NEAREST HES BASE,/UNIT	20	MI	0.00				
	Number of Units	1						
76400	ZI MILEAGE,CMT MTLs DEL/RET MIN	10	MI	0.00				
	NUMBER OF TONS	29.5						
3965	HANDLE&DUMP SVC CHRG, CMT&ADDITIVES,ZI	682	CF	0.00				
	NUMBER OF EACH	1						
	Unit of Measurement		EA					
452986	HALCEM (TM) SYSTEM	400	SK					
452963	FRACCEM (TM) SYSTEM	200	SK					
101894003	ENHANCER 923	1000	LB					
100001580	ECONOLITE-ADDITIVE	36	LB	0.00				
100012223	SILICALITE COMPACTED	600	LB	0.00				
100001615	FE-2	36	LB	0.00				
100003670	HALAD-344	36	LB	0.00				
100003691	SAND-200 MESH SILICA FLOUR SSA-1	3282	LB	0.00				
100008028	SUGAR, GRANULATED, IMPERIAL	50	LB	0.00				
528788	MUD FLUSH III	24	BBL	0.00				
<b>Totals</b>					<b>USD</b>	<b>49,235.81</b>	<b>28,909.14</b>	<b>20,326.67</b>

Halliburton Rep: LARRY LAVALLEY

Customer Agent: Pete Burns

Halliburton Approval

Field Ticket Number: 900507196

Field Ticket Date: Tuesday, June 11, 2013

2 of 3

## The Road to Excellence Starts with Safety

Sold To #: 345242		Ship To #: 3003481		Quote #:		Sales Order #: 900507196	
Customer: NOBLE ENERGY INC E-BUSINESS				Customer Rep: Burns, Pete			
Well Name: Cannon Red W			Well #: 15-3		API/UWI #: 05-123-16510		
Field: WATTENBERG		City (SAP): FORT LUPTON		County/Parish: Weld		State: Colorado	
Lat: N 40.143 deg. OR N 40 deg. 8 min. 36.517 secs.				Long: W 104.766 deg. OR W -105 deg. 14 min. 3.736 secs.			
Contractor: Workover			Rig/Platform Name/Num: Workover 8				
Job Purpose: Recement Service							
Well Type: Development Well			Job Type: Recement Service				
Sales Person: PLIENESS, RYAN			Srvc Supervisor: LAVALLEY, LARRY		MBU ID Emp #: 419296		

## Job Personnel

HES Emp Name	Exp Hrs	Emp #	HES Emp Name	Exp Hrs	Emp #	HES Emp Name	Exp Hrs	Emp #
BROOM, KENDALL L	4	524682	LAVALLEY, LARRY P	4	419296	NESBITT, ROY Iverson	4	537416

## Equipment

HES Unit #	Distance-1 way	HES Unit #	Distance-1 way	HES Unit #	Distance-1 way	HES Unit #	Distance-1 way
10972458	10 mile	11019275	10 mile	11488570C	10 mile	11518549	10 mile
53301	10 mile						

## Job Hours

Date	On Location Hours	Operating Hours	Date	On Location Hours	Operating Hours	Date	On Location Hours	Operating Hours
6/11/13	4	3.5						

TOTAL Total is the sum of each column separately

## Job

Formation Name	Formation Depth (MD)	Top	Bottom	Form Type	Job depth MD	Job Depth TVD	Water Depth	Perforation Depth (MD)	From	To
				BHST	4800. ft	4800. ft	Wk Ht Above Floor	6. ft		

## Job Times

Called Out	Date	Time	Time Zone
On Location	11 - Jun - 2013	05:00	MST
Job Started	11 - Jun - 2013	07:15	MST
Job Completed	11 - Jun - 2013	09:15	MST
Departed Loc	11 - Jun - 2013	12:40	MST
		13:30	MST

## Well Data

Description	New / Used	Max pressure psig	Size in	ID in	Weight lbm/ft	Thread	Grade	Top MD ft	Bottom MD ft	Top TVD ft	Bottom TVD ft
12." Open Hole				12.				808.	1000.		
Surface Casing	Used		8.625	8.097	24.		J-55	.	808.	.	808.
1 1/4"	Unknow n		1.25	.	4.7		K-55	.	4800.		
2 7/8" Production Casing	Unknow n		2.875	2.441	6.5			.	4800.		4800.

## Tools and Accessories

Type	Size	Qty	Make	Depth	Type	Size	Qty	Make	Depth	Type	Size	Qty	Make
Guide Shoe					Packer					Top Plug			
Float Shoe					Bridge Plug					Bottom Plug			
Float Collar					Retainer					SSR plug set			
Insert Float										Plug Container			
Stage Tool										Centralizers			

## Miscellaneous Materials

Gelling Agt	Conc	Surfactant	Conc	Acid Type	Qty	Conc	%
Treatment Fld	Conc	Inhibitor	Conc	Sand Type	Size	Qty	

## Fluid Data

Stage/Plug #: 1



# HALLIBURTON

## Cementing Job Summary

Fluid #	Stage Type	Fluid Name	Qty	Qty uom	Mixing Density lbm/gal	Yield ft <sup>3</sup> /sk	Mix Fluid Gal/sk	Rate bbl/min	Total Mix Fluid Gal/sk
1	MudFlush III		24.00	bbl	.	.0	.0	.0	
2	13.5 FracCem	FRACCEM (TM) SYSTEM (452963)	200.0	sacks	13.5	1.74	8.3		8.3
	0.2 %	ECONOLITE (100001580)							
	3 lbm	SILICALITE - COMPACTED, 50 LB SK (100012223)							
	0.2 %	FE-2 (100001615)							
	0.2 %	HALAD(R)-344, 50 LB (100003670)							
	20 %	SAND-SSA-1 - SILICA FLOUR - 200 MESH, BULK (100003691)							
	8.3 Gal	FRESH WATER							
3	15.8# Cement	HALCEM (TM) SYSTEM (452986)	400.0	sacks	15.8	1.15	5.0		5.0
	5 Gal	FRESH WATER							
<b>Calculated Values</b>		<b>Pressures</b>		<b>Volumes</b>					
Displacement	4.5	Shut In: Instant		Lost Returns	0	Cement Slurry	144	Pad	
Top Of Cement		5 Min		Cement Returns	0	Actual Displacement	4.5	Treatment	
Frac Gradient		15 Min		Spacers	30	Load and Breakdown		Total Job	177.5
<b>Rates</b>									
Circulating		Mixing	2	Displacement	2	Avg. Job	2		
Cement Left In Pipe	Amount	0 ft	Reason	Shoe Joint					
Frac Ring # 1 @	ID	Frac ring # 2 @	ID	Frac Ring # 3 @	ID	Frac Ring # 4 @	ID		
The Information Stated Herein Is Correct				Customer Representative Signature					

*The Road to Excellence Starts with Safety*

Sold To #: 345242	Ship To #: 3003481	Quote #:	Sales Order #: 900507196
Customer: NOBLE ENERGY INC E-BUSINESS		Customer Rep: Burns, Pete	
Well Name: Cannon Red W	Well #: 15-3	API/UWI #: 05-123-16510	
Field: WATTENBERG	City (SAP): FORT LUPTON	County/Parish: Weld	State: Colorado
Legal Description:			
Lat: N 40.143 deg. OR N 40 deg. 8 min. 36.517 secs.		Long: W 104.766 deg. OR W -105 deg. 14 min. 3.736 secs.	
Contractor: Workover		Rig/Platform Name/Num: Workover 8	
Job Purpose: Recement Service			Ticket Amount:
Well Type: Development Well		Job Type: Recement Service	
Sales Person: PLIENESS, RYAN		Srvc Supervisor: LAVALLEY, LARRY	MBU ID Emp #: 419296

Activity Description	Date/Time	Cht #	Rate bbl/min	Volume bbl		Pressure psig		Comments
				Stage	Total	Tubing	Casing	
Start Job	06/11/2013 09:03							
Test Lines	06/11/2013 09:15						2867.0	FRESH WATER WITH NO ADDITIVES
Pump Spacer 1	06/11/2013 09:16		1	5	5		2084.0	FRESH WATER WITH NO ADDITIVES TO ESTABLISH INJECTION RATE.
Pump Spacer 1	06/11/2013 09:21		1	12	17		2084.0	FRESH WATER WITH MUDFLUSH III
Pump Lead Cement	06/11/2013 09:30		1	62	79		2104.0	200 SKS FRACCCEM MIXED @ 13.5 PPG YIELD 1.74 FT3/SK AND 8.3 GAL/SK
Pump Displacement	06/11/2013 10:16		1	3	82		2057.0	FRESH WATER WITH NO ADDITIVES
Other	06/11/2013 10:18							SHUTDOWN WHILE RIG PULLED 120 JOINTS TO 1100 FEET
Pump Spacer 1	06/11/2013 11:33		2	12	94		455.0	FRESH WATER WITH MUDFLUSH III
Pump Tail Cement	06/11/2013 11:49		2	82	176		1087.0	400 SKS CLASS G NEAT MIXED @ 15.8 PPG YIELD 1.15 FT3/SK AND 5.0 GAL/SK
Pump Displacement	06/11/2013 12:32		2	1.5	177.5		1317.0	FRESH WATER WITH NO ADDITIVES NO CEMENT BACK TO SURFACE BUT GOT 10BBLs MUDFLUSH BACK.
End Job	06/11/2013 12:39							

Sold To #: 345242

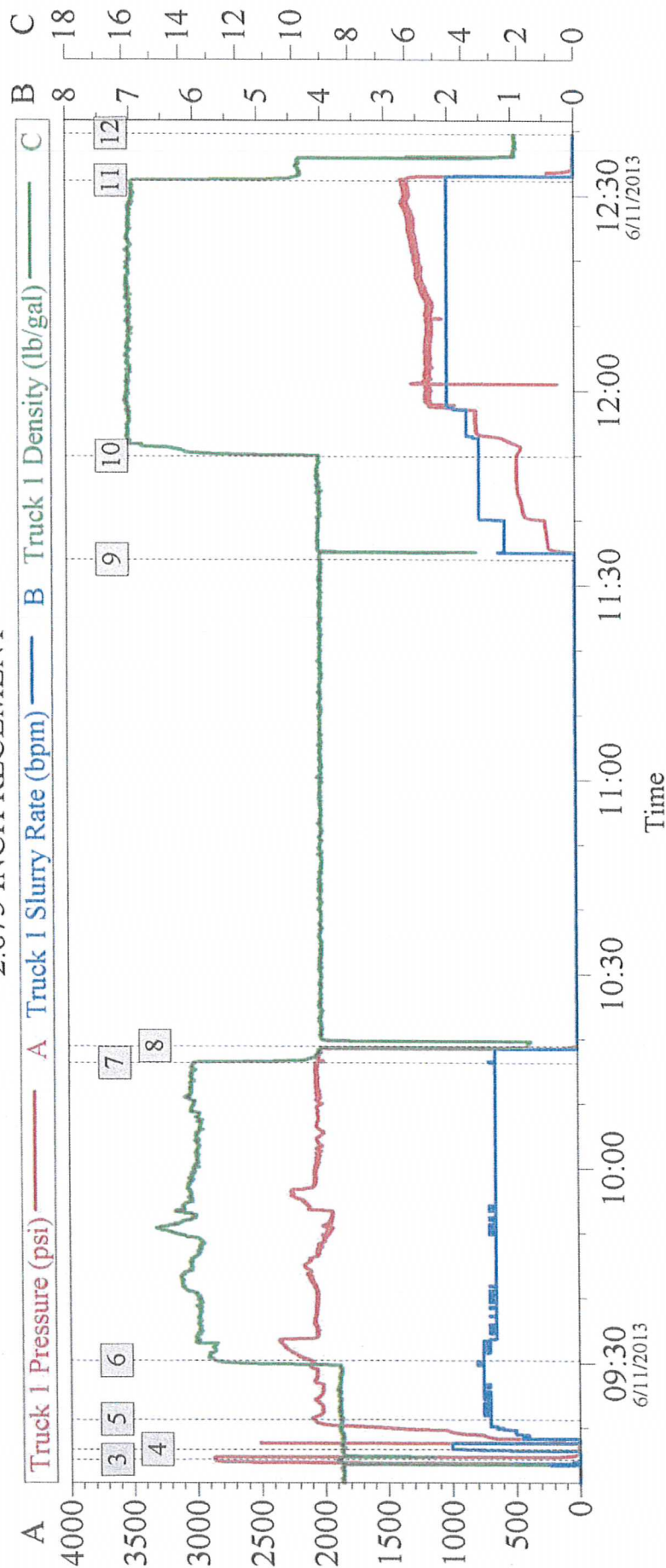
Ship To #: 3003481

Quote # :

Sales Order #: 900507196



# NOBLE ENERGY CANNON RED W 15-3 2.875 INCH RECEMENT



## Global Event Log

Intersection	T1P	T1SR	T1D	Intersection	T1P	T1SR	T1D
1 Starting Job	08:00:37	-1.000	0.000	2 Start Job	09:03:59	0.000	8.346
3 Test Lines	09:15:07	2867	0.000	4 Pump Spacer 1	09:16:41	1.000	8.390
5 Pump Spacer 1	09:21:18	2084	1.400	6 Pump Lead Cement	09:30:22	2104	12.79
7 Pump Displacement	10:16:14	2057	1.300	8 Other	10:18:51	42.25	1.822
9 Pump Spacer 1	11:33:55	0.000	9.000	10 Pump Tail Cement	11:49:50	452.3	9.050
11 Pump Displacement	12:32:16	1317	2.000	12 Ending Job	12:39:32	2.000	2.110

Customer: NOBLE ENERGY  
Well Description: 2.875 INCH RECEMENT

Job Date: 11-Jun-2013  
THANKS LARRY LAVALLEY AND CREW

Sales Order #: 900507196

OptiCem v6.4.10  
11-Jun-13 12:40