

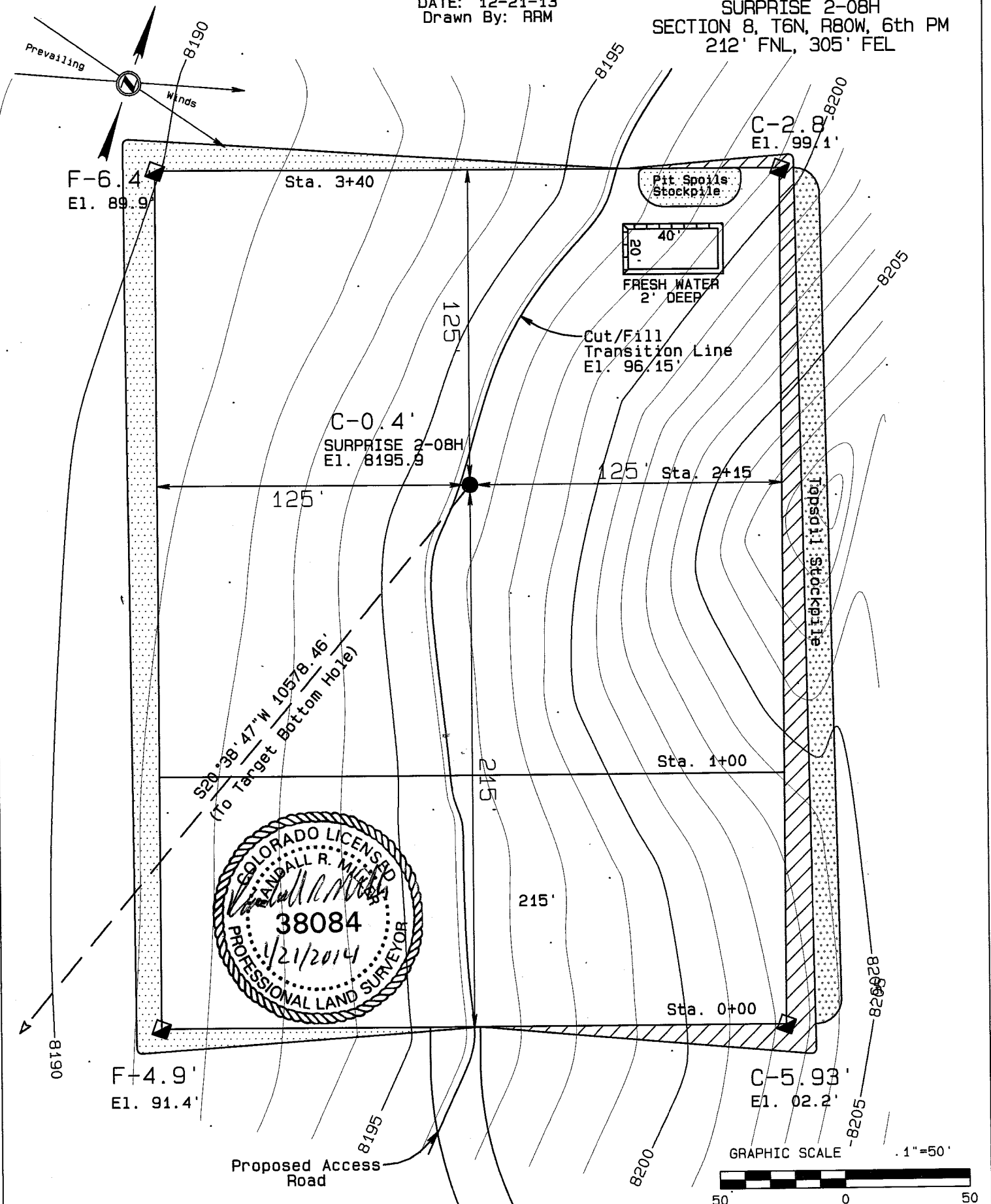
EE3 LLC

CONSTRUCTION LAYOUT

SURPRISE 2-08H

SECTION 8, T6N, R80W, 6th PM
212' FNL, 305' FEL

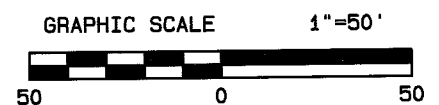
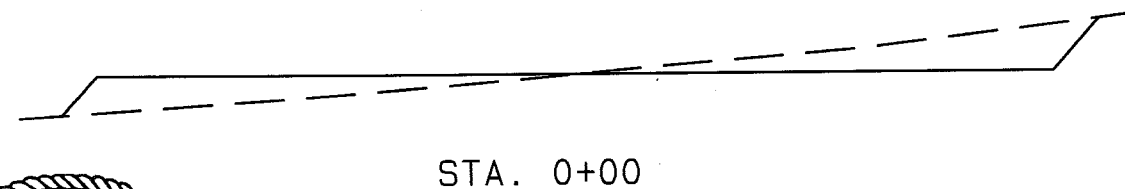
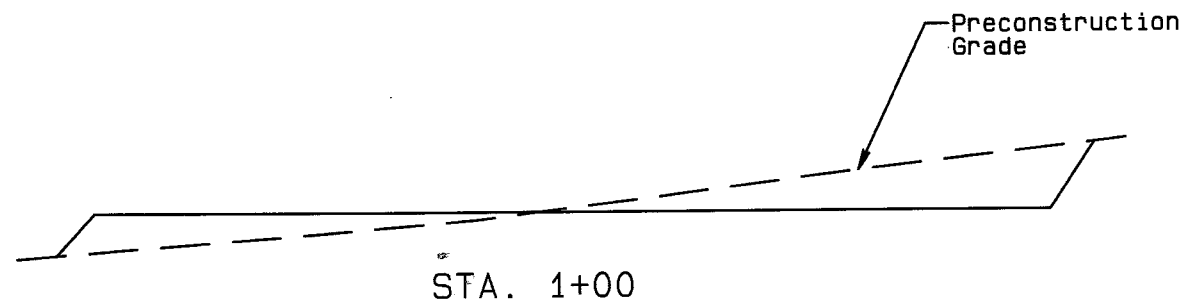
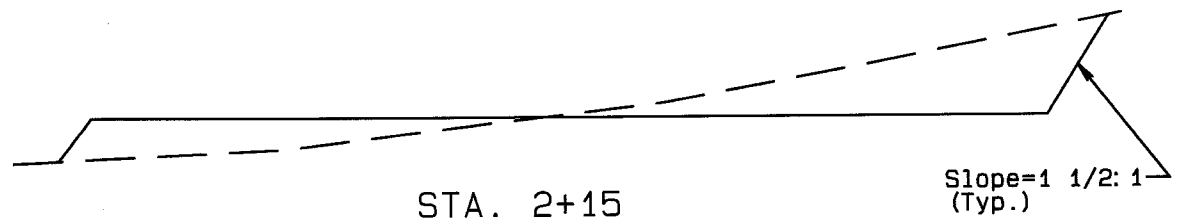
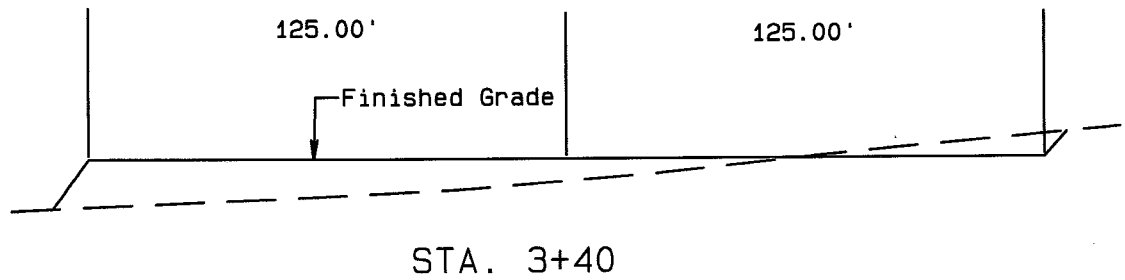
DATE: 12-21-13
Drawn By: RAM



Elev. Ungraded Ground at SURPRISE 2-08H Location Stake=8195.9

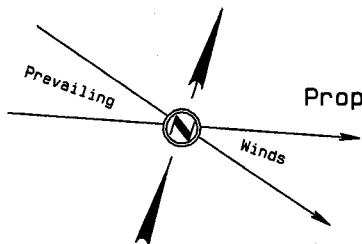
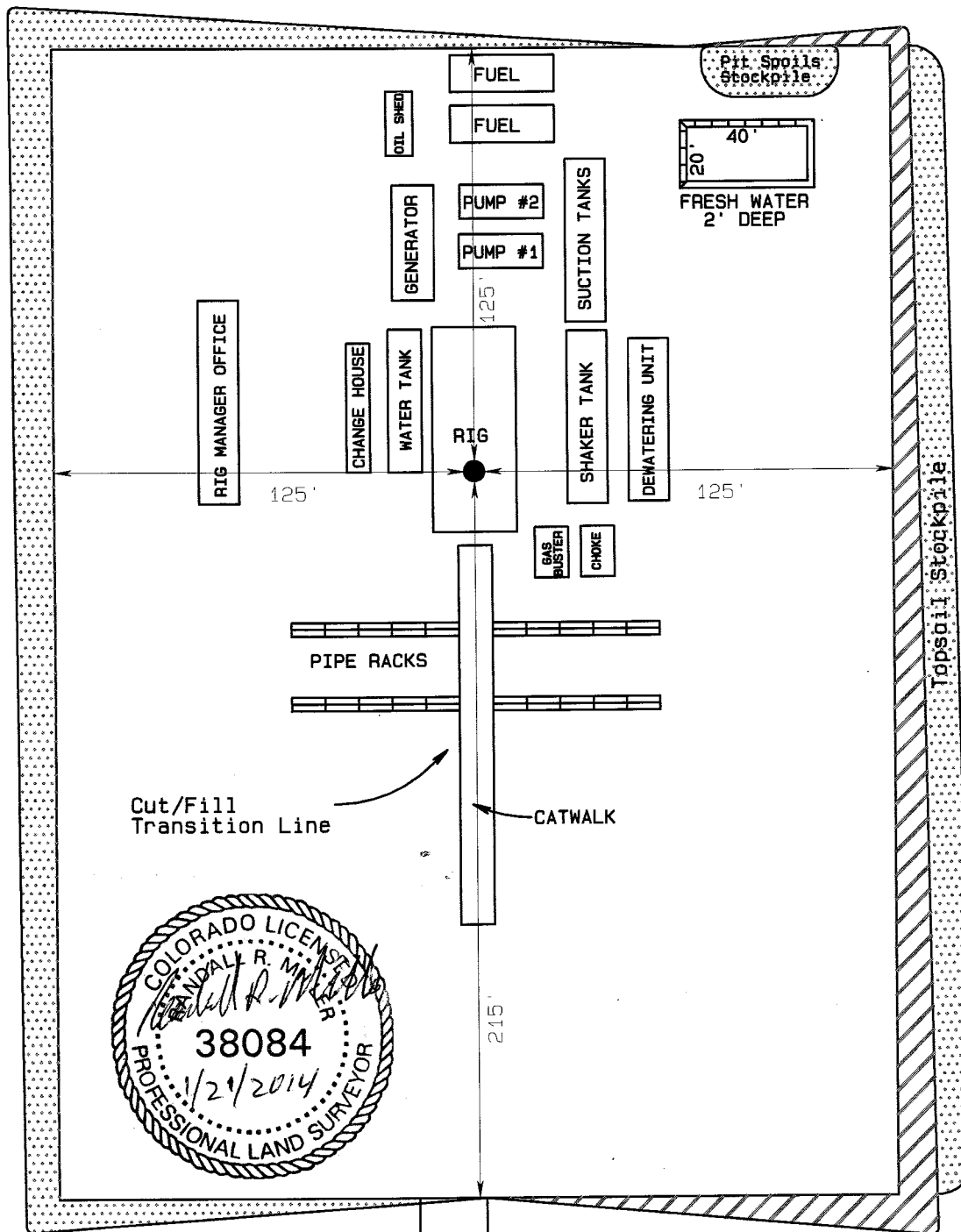
NORTH PARK ENGINEERING & CONSULTING, INC.
PO Box 395 Walden, CO 80480 970-723-3725

EE3 LLC
CONSTRUCTION LAYOUT CROSS SECTION
SURPRISE 2-08H
SECTION 8, T6N, R80W, 6th PM
212' FNL, 305' FEL



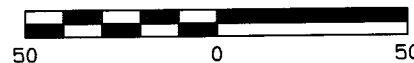
DATE: 10-11-13
Drawn By: RRM

EE3 LLC
TYPICAL RIG LAYOUT
SURPRISE #2-08H
SECTION 8, T6N, R80W, 6th PM
NE1/4NE1/4



Proposed Access Road

GRAPHIC SCALE 1"=50'



NORTH PARK ENGINEERING & CONSULTING, INC.
PO Box 395 Walden, CO 80480 970-723-3725