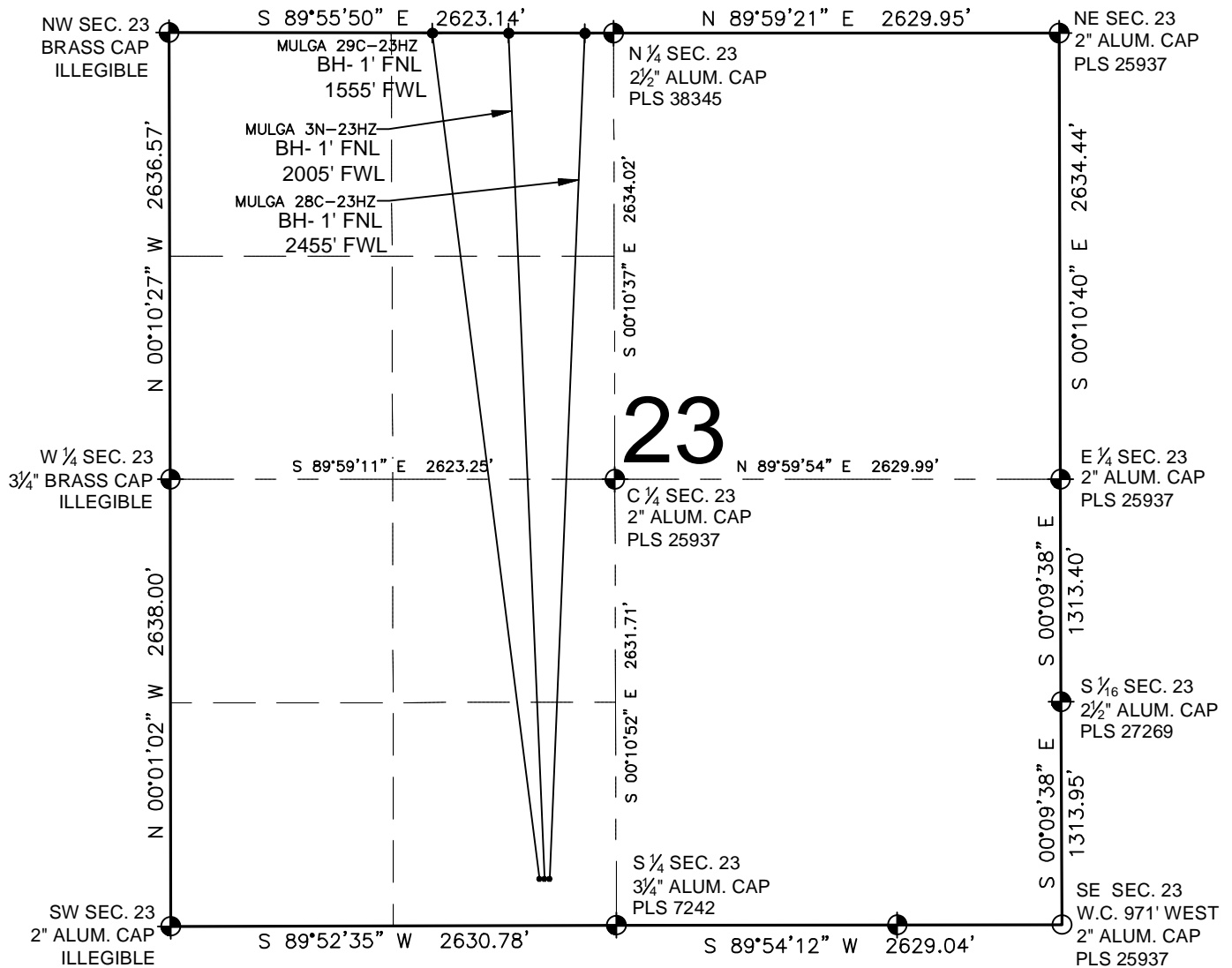


MULGA 3N-23HZ MULTI-WELL PLAN

SECTION 23, TOWNSHIP 2 NORTH, RANGE 67 WEST, 6TH P.M.



LEGEND

- ⊕ = EXISTING MONUMENT
- = PROPOSED WELL
- ◆ = BOTTOM HOLE
- ◆ = EXISTING WELL
- BH = BOTTOM HOLE

NOTES:

MULGA 29C-23HZ TO BE AT 275' FSL, 2176' FWL.
 BOTTOM HOLE AT 1' FNL & 1555' FWL
 MULGA 3N-23HZ TO BE AT 275' FSL, 2206' FWL.
 BOTTOM HOLE AT 1' FNL & 2005' FWL
 MULGA 28C-23HZ TO BE AT 275' FSL, 2237' FWL.
 BOTTOM HOLE AT 1' FNL & 2455' FWL

PREPARED BY:



KERR-MCGEE OIL & GAS ONSHORE LP

FIELD DATE:

07-18-13

DRAWING DATE:

07-26-13

SURFACE LOCATION:

SE 1/4 SW 1/4, SEC. 23, T2N, R67W, 6TH P.M.
 WELD COUNTY, COLORADO

