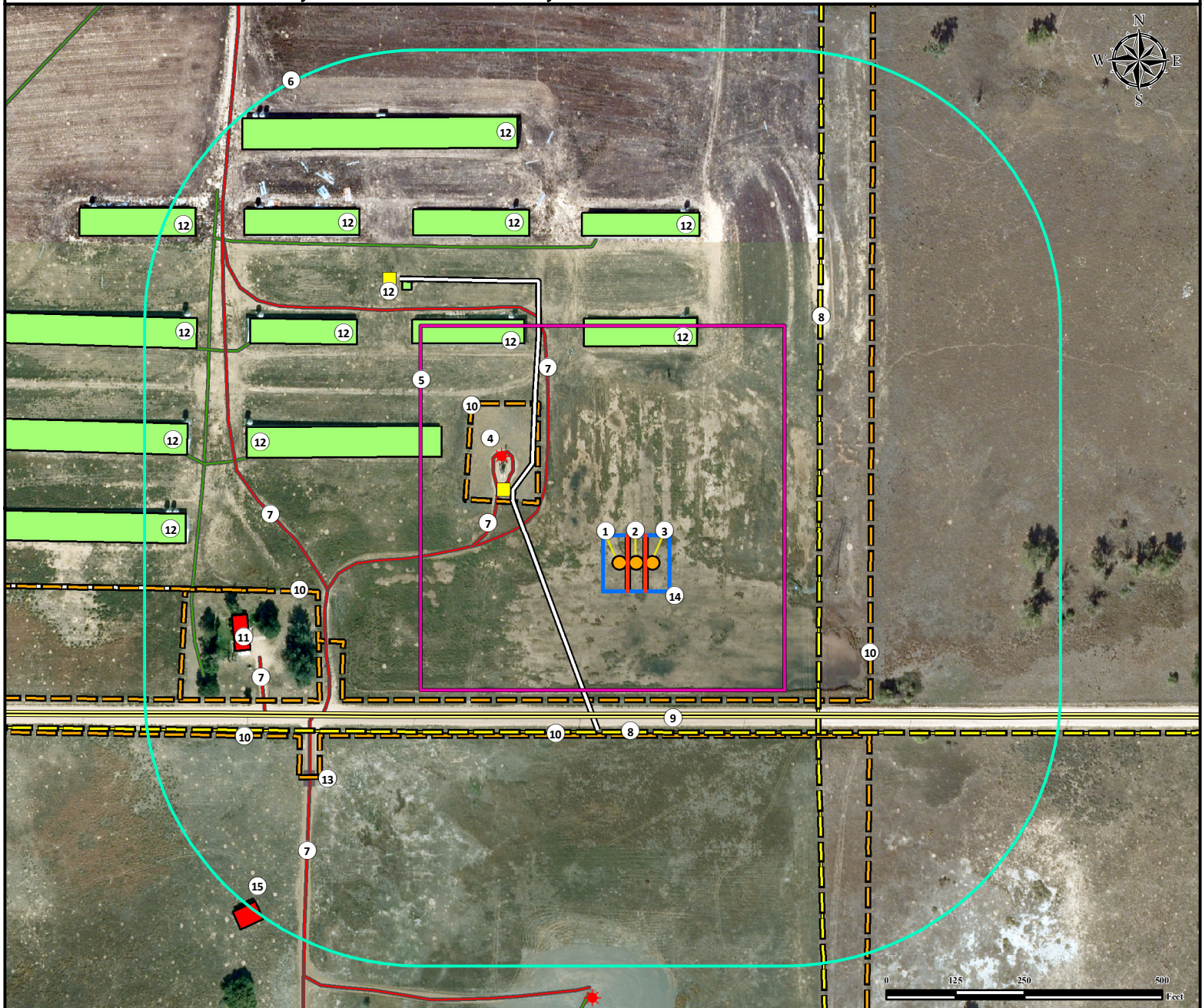


Location Drawing

MULGA 3N-23HZ

Horizontal Multi Well Pad

SE¼ SW¼ SECTION 23, TOWNSHIP 2 NORTH, RANGE 67 WEST OF THE 6TH PRINCIPAL MERIDIAN



1. Proposed Well MULGA 29C-23HZ.

2. Proposed Well MULGA 3N-23HZ.

3. Proposed Well MULGA 28C-23HZ.

4. Existing Well SIDNEY STREAR UNIT 2 is ±312' NW.

5. Operational Disturbance Area.

6. 500' Radius.

7. Private Roads are ±204' NW, ±272' NW, ±561' W, ±646' SW, and ±703' SW.

8. Powerlines are ±305' S and ±331' E.

9. County Road 18 is ±275' S.

10. Fences are ±210' NW ±247' S, ±311' S, ±579' W, and ±686' SW.

11. Building Unit is ±711' SW.

12. Buildings are ±394' N, ±402' NW, ±447' NW, ±593' N, ±624' NW, ±642' NW, ±643' NW, ±778' NW, ±784' NW, ±817' W, ±837' NW, ±887' NW, and ±994' NW.

13. Gate is ±707' SW.

14. Pump Jack Operational Area.

15. Building Unit is ±923' SW.

Legend

- | | | | |
|-----------------|------------------------------|----------------|-----------------------------|
| ● Proposed Well | □ 500' Radius | ■ Buildings | — Pipeline |
| ★ Existing Well | □ Disturbance Area | — Powerline | — Underground Electric Line |
| ■ Gate | □ Pump Jack Operational Area | — Fence | — Public Road |
| | ■ Building Units | — Private Road | |

Reference Location

** All measurements are made from Reference Well MULGA 3N-23HZ **

Lat: 40.117136° Long: -104.859597° (NAD83)
Elevation: 4947 Feet

Surface Use: Rangeland

Nearest Building Unit: ±711' SW

Prepared for:



KERR-MCGEE OIL & GAS ONSHORE LP



Use our resources to find yours!
www.petro-fs.com
(303) 928-7128

Field Date: 07/18/2013
Drafting Date: 02/25/2014
Drafter: DRF
Revision: 1

Data Sources:

- Aerial courtesy of Anadarko Petroleum Corporation (2010)