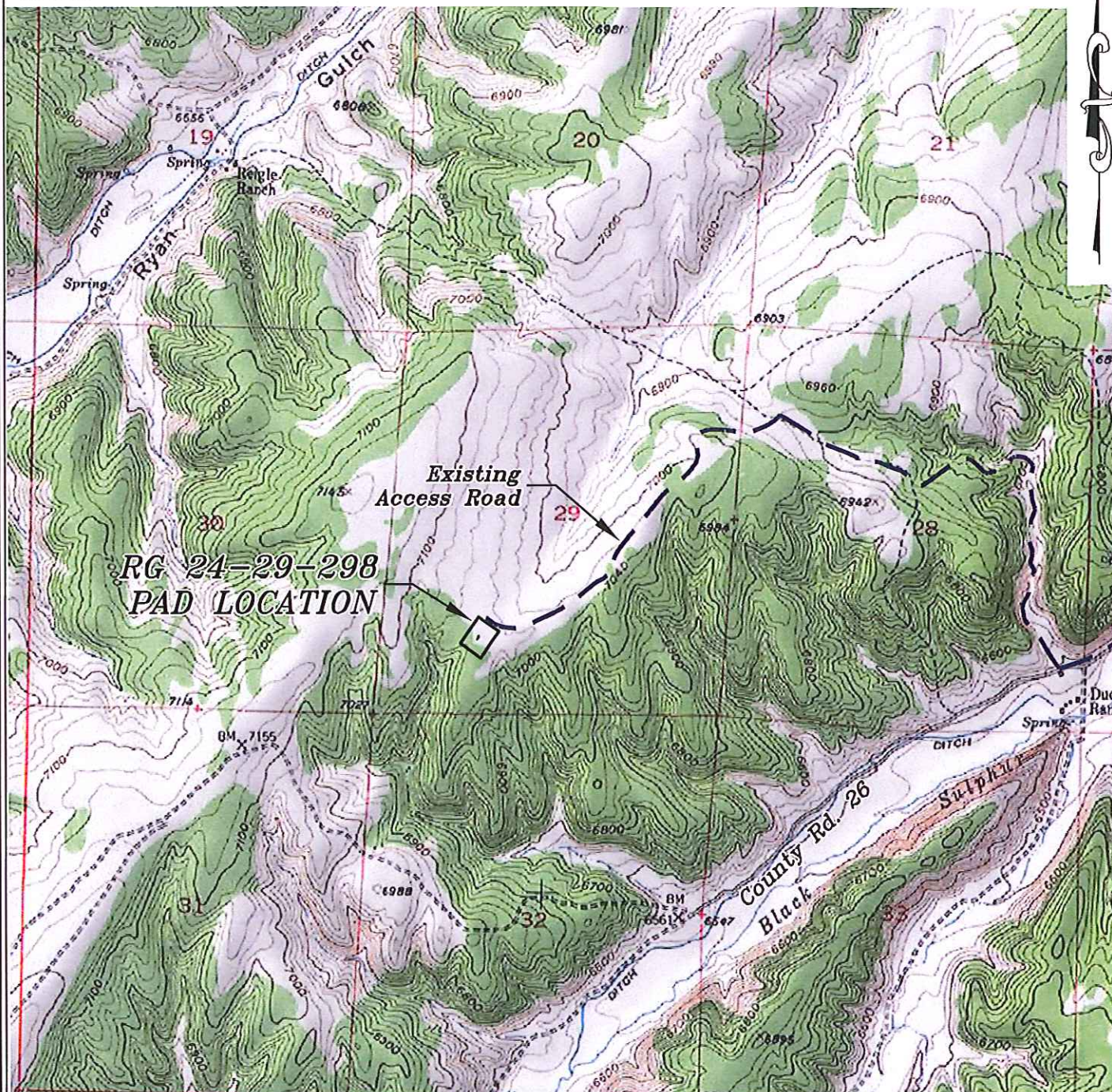


Section 29  
T. 2 S., R 98 W  
6th. P.M.



**ACCESS DESCRIPTION:**

FROM THE INTERSECTION OF STATE HIGHWAY 64 AND RIO BLANCO COUNTY ROAD 5 PROCEED SOUTHERLY ALONG COUNTY ROAD 5  $\pm 18.0$  MILES TO THE INTERSECTION WITH COUNTY ROAD 26 (Mile Marker 23.4), PROCEED WESTERLY ALONG COUNTY ROAD 26  $\pm 6.3$  MILES TO THE INTERSECTION WITH COUNTY ROAD 85, PROCEED RIGHT IN A NORTHERLY DIRECTION  $\pm 1.4$  MILES TO AN INTERSECTION WITH A DIRT/GRAVEL ROAD, PROCEED LEFT IN A SOUTHWESTERLY DIRECTION  $\pm 1.1$  MILES TO THE RG 24-29-298 DRILL PAD LOCATION, AS SHOWN HEREON.

REVISED: 7/11/13

Construction Plan Prepared for:  
**WPX ENERGY** WPX Energy Rocky Mountain, LLC

136 East Third Street  
Rifle, Colorado 81650  
Ph. (970) 625-2720  
Fax (970) 625-2773



**BOOKCLIFF**  
Survey Services, Inc.

SCALE: 1" = 2000'  
DATE: 6/24/13  
PLAT: 5 of 7  
PROJECT: Highlands  
DFT: cws

RG 24-29-298 Drill Pad - Plat 5  
ACCESS ROAD & TOPO MAP