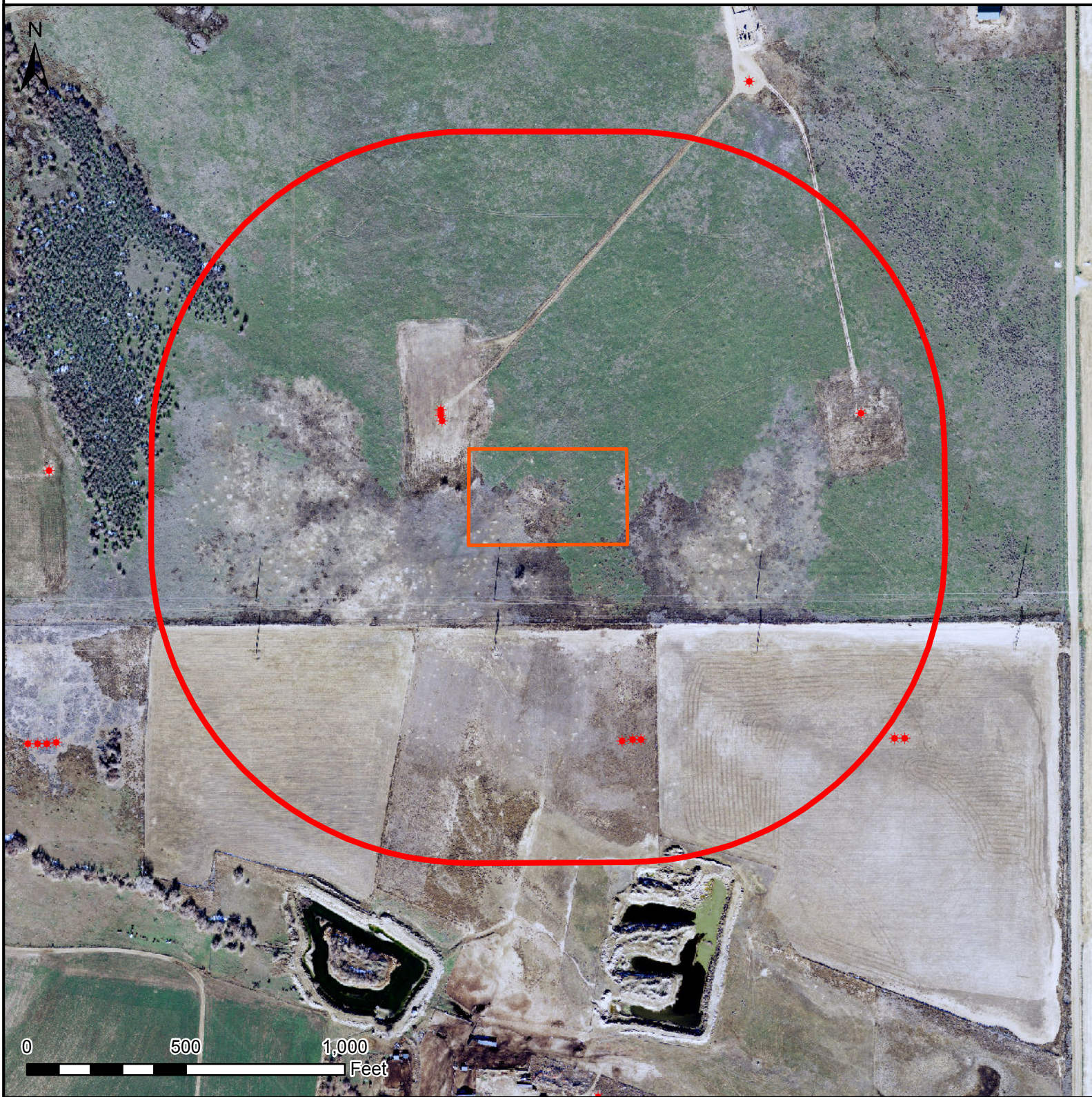





# HYDROLOGY MAP

## DOLPH TANK BATTERY 1N-1HZ



### Legend

-  1000' buffer
-  Well pad (proposed)
-  Existing oil/gas well (COGCC)

### Nearest Surface Water Feature

Wetland: 1190' NW Elev: 4995'  
Pond: 1367' S Elev: 4985'  
Well elevation: 4993'

All measurements are made from  
the reference well.



Date created: 2/20/2014  
Created by: APC Regulatory GIS  
Scale: 1:5,000  
Projection: NAD83 UTM 13N