

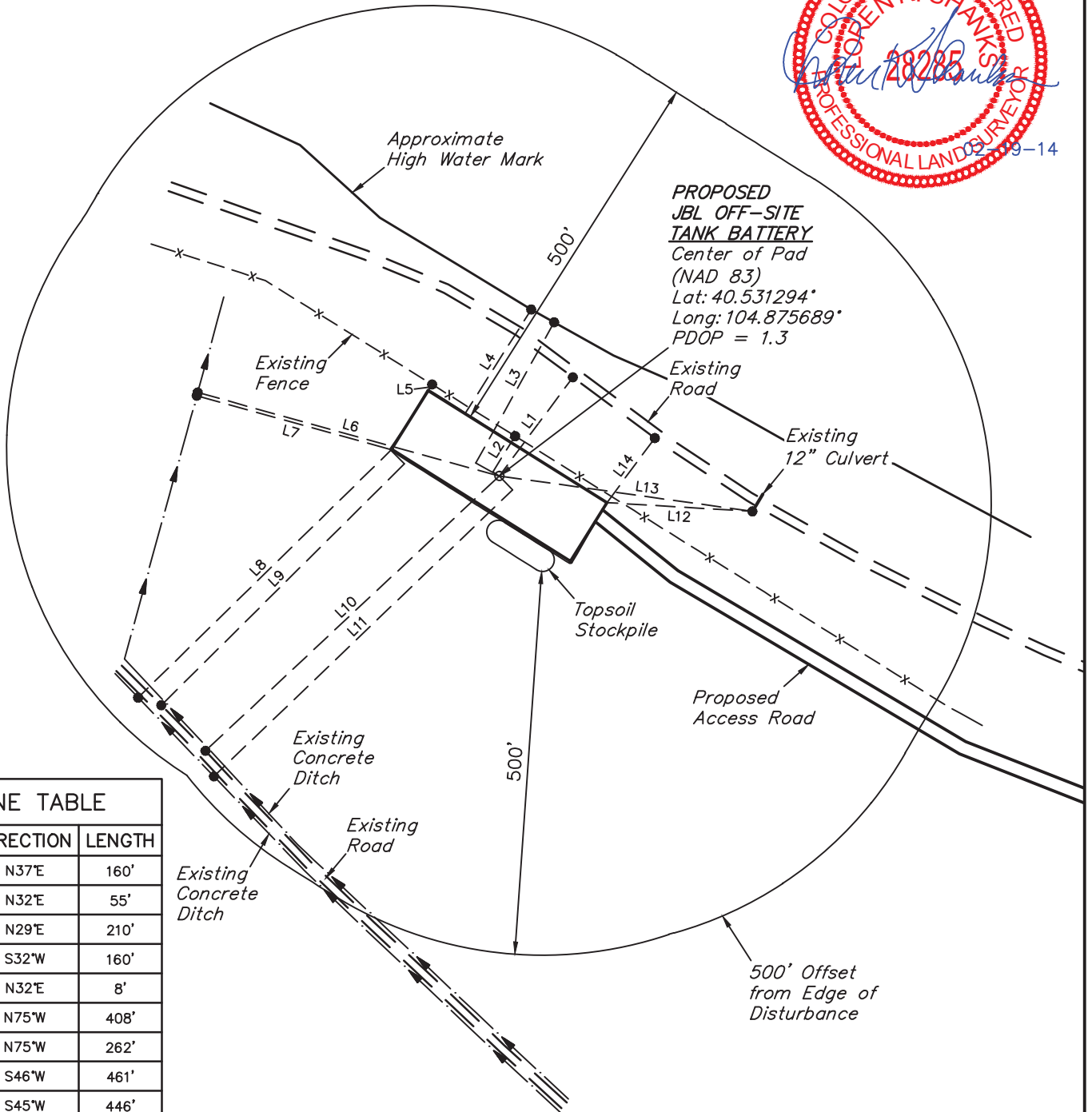
GREAT WESTERN OIL & GAS COMPANY

LOCATION DRAWING FOR

JBL OFF-SITE TANK BATTERY
SECTION 34, T7N, R67W, 6th P.M.
2404' FNL 1567' FEL

FIGURE #4

SCALE: 1" = 200'
DATE SURVEYED: 02-11-14
SURVEYED BY: ZANE BULLARD
DATE DRAWN: 02-18-14
DRAWN BY: J.S.



LINE TABLE

LINE	DIRECTION	LENGTH
L1	N37°E	160'
L2	N32°E	55'
L3	N29°E	210'
L4	S32°W	160'
L5	N32°E	8'
L6	N75°W	408'
L7	N75°W	262'
L8	S46°W	461'
L9	S45°W	446'
L10	S47°W	524'
L11	S46°W	539'
L12	S87°E	189'
L13	S82°E	333'
L14	N37°E	104'