

GREAT WESTERN OIL & GAS COMPANY

PRODUCTION FACILITY LAYOUT FOR

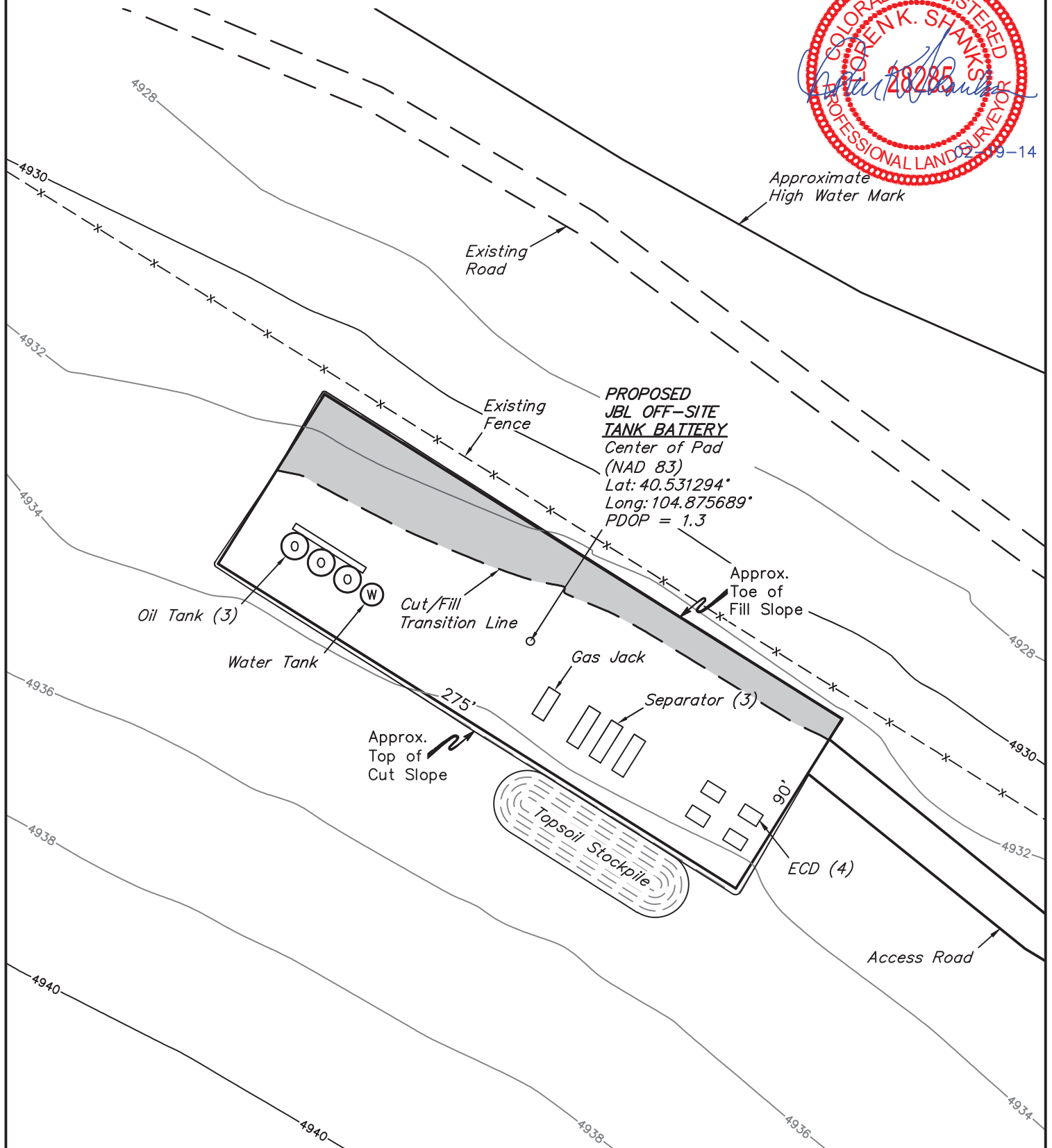
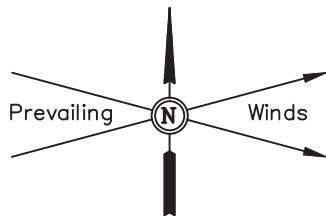
JBL OFF-SITE TANK BATTERY
SECTION 34, T7N, R67W, 6th P.M.
2404' FNL 1567' FEL

FIGURE #3

SCALE: 1" = 60'

DATE: 02-18-14

DRAWN BY: J.S.



UINTAH ENGINEERING & LAND SURVEYING

85 So. 200 East * Vernal, Utah 84078 * (435) 789-1017